

DEPARTMENTAL POLICY/PROCEDURE

Page 1 of 3

Chemical Dependency Consults

Page 1 of 2

BARNES-JEWISH HOSPITAL TRAUMA SERVICES POLICIES/PROCEDURES

TITLE: Chemical Dependency Consults

SUBMITTED/REVIEWED BY: Sharon Monical, RN, MSN, Manager
Trauma Services

LAST REVIEWED/REVISION DATE: 05/2020

Policy Statement

A. Any trauma patient with suspected or confirmed substance abuse problems will be provided with a Chemical Dependency Consult. This service offers consultation to patients with substance abuse problems by providing assessment, education, intervention and referral services.

Procedure

- A. All trauma patients will be screened for alcohol use in the Emergency Department with either the National Institute on Alcohol Abuse and Alcoholism's binge drinking question from their "Recommended Sets of Alcohol Consumption Questions" or by having a Blood Alcohol Level drawn (see attached algorithm). If the Binge Drinking Question screen is positive the patient will be screened further by using the CAGE questions. If this screen is positive the patient will be provided a brief intervention regardless of disposition. Also, if the blood alcohol level is positive a brief intervention will be done.
- B. If an admitted trauma patient is found to have drug or ethanol levels in his/her system or is screened positive by the Binge Drinking Question, the patient will be offered a Chemical Dependency Consult to include a brief intervention. This can be offered by a physician, nurse practitioner, registered nurse or social worker and must be documented.
- C. Monday through Friday, the Barnes Jewish Hospital Psychiatry Service will provide formal Chemical Dependency Consults. This service will be provided by an NP, PA or psychiatry resident under the supervision of a board certified psychiatrist, to provide further assessment and evaluation of the patient's treatment needs. Once the order is placed in EPIC the psychiatry consult team **should be notified by calling (314)536-7537**. Please leave a message if after hours.
- D. For weekend needs, there are pamphlets available on each of the trauma units, and with social workers to provide to the patient in need of a Chemical Dependency consult and cannot be evaluated. For more complex issues, the on-call social worker or the on-call psychiatrist may be consulted.

Resources/References

American College of Surgeons, Committee on Trauma (COT) Quick Guide "Alcohol Screening and Brief Intervention (SBI) for Trauma Patients", 2014

American College of Surgeons, COT "Resources for Optimal Care of the Injured Patient, 2014

Department of Public Health, Emergency Services and Highway Safety, Emergency Medical Services and Trauma Center Code, Level One Trauma Center Designation Criteria, Section 515.2030.

National Institute on Alcohol Abuse and Alcoholism

*** Controlled Document ***

*This document is maintained electronically on the BJHnet Policies and Procedures website.
It is the responsibility of the user to verify that any hard copy is of the latest revision by checking the website.*

DEPARTMENTAL POLICY/PROCEDURE

Page 2 of 3

Brent Ruoff, MD, Chief, Emergency Medicine
Bonnie Woods, RN, Director, Psychiatry
Dr. Monica Bishop, MD, Director Psychiatry
Allison Brauch, DNP, Psychiatry

Approval: Dr. Douglas Schuerer, Medical Director, Trauma Services

Date of Approval: 08/2015, Reviewed 09/2017, 08/2018, 5/2019

Chemical Dependency Consults

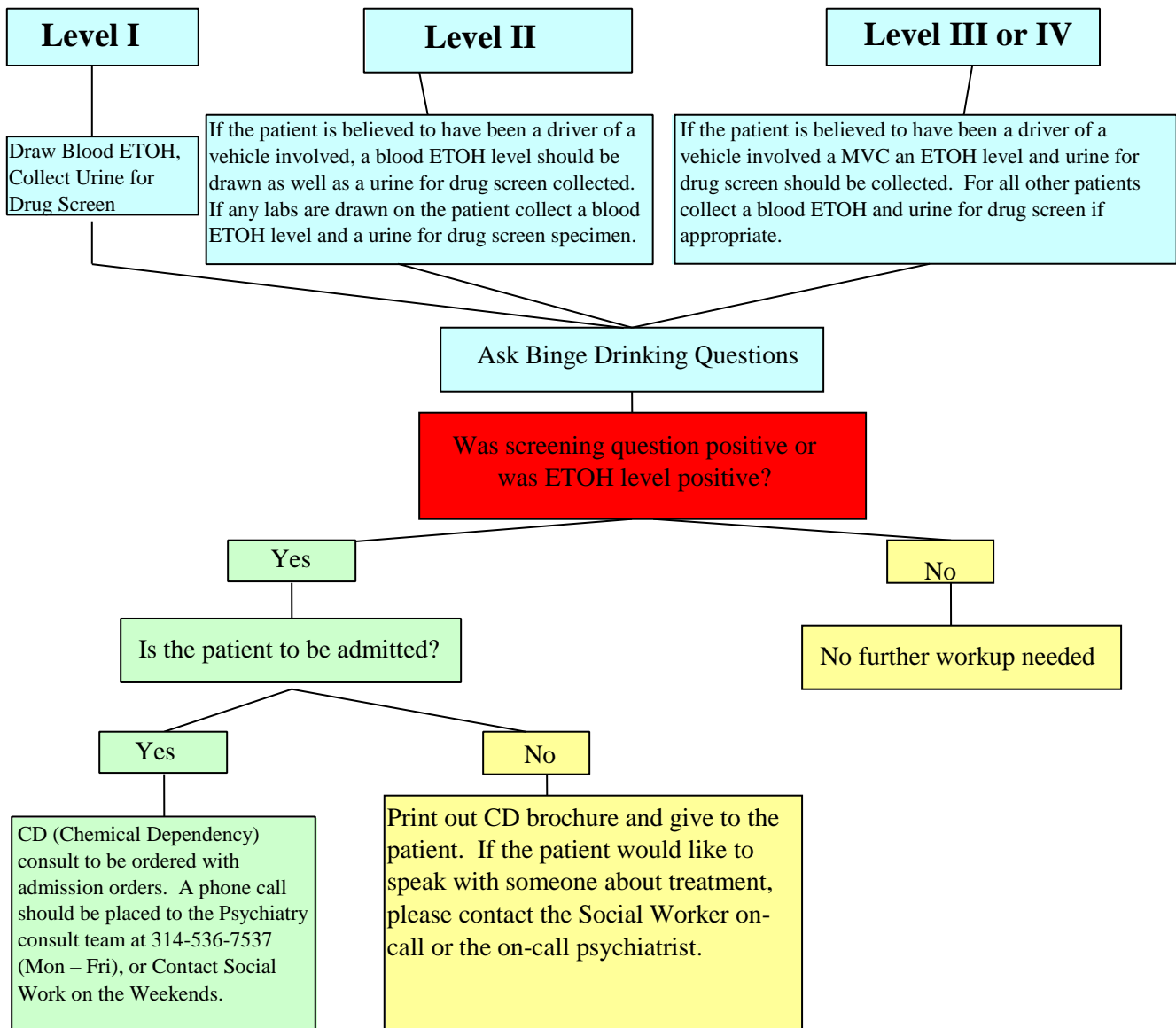
Page 2 of 2

Chemical Dependency Screening for Trauma Patients

***** Controlled Document *****

*This document is maintained electronically on the BJHnet Policies and Procedures website.
It is the responsibility of the user to verify that any hard copy is of the latest revision by checking the website.*

DEPARTMENTAL POLICY/PROCEDURE



*** Controlled Document ***

*This document is maintained electronically on the BJHnet Policies and Procedures website.
It is the responsibility of the user to verify that any hard copy is of the latest revision by checking the website.*