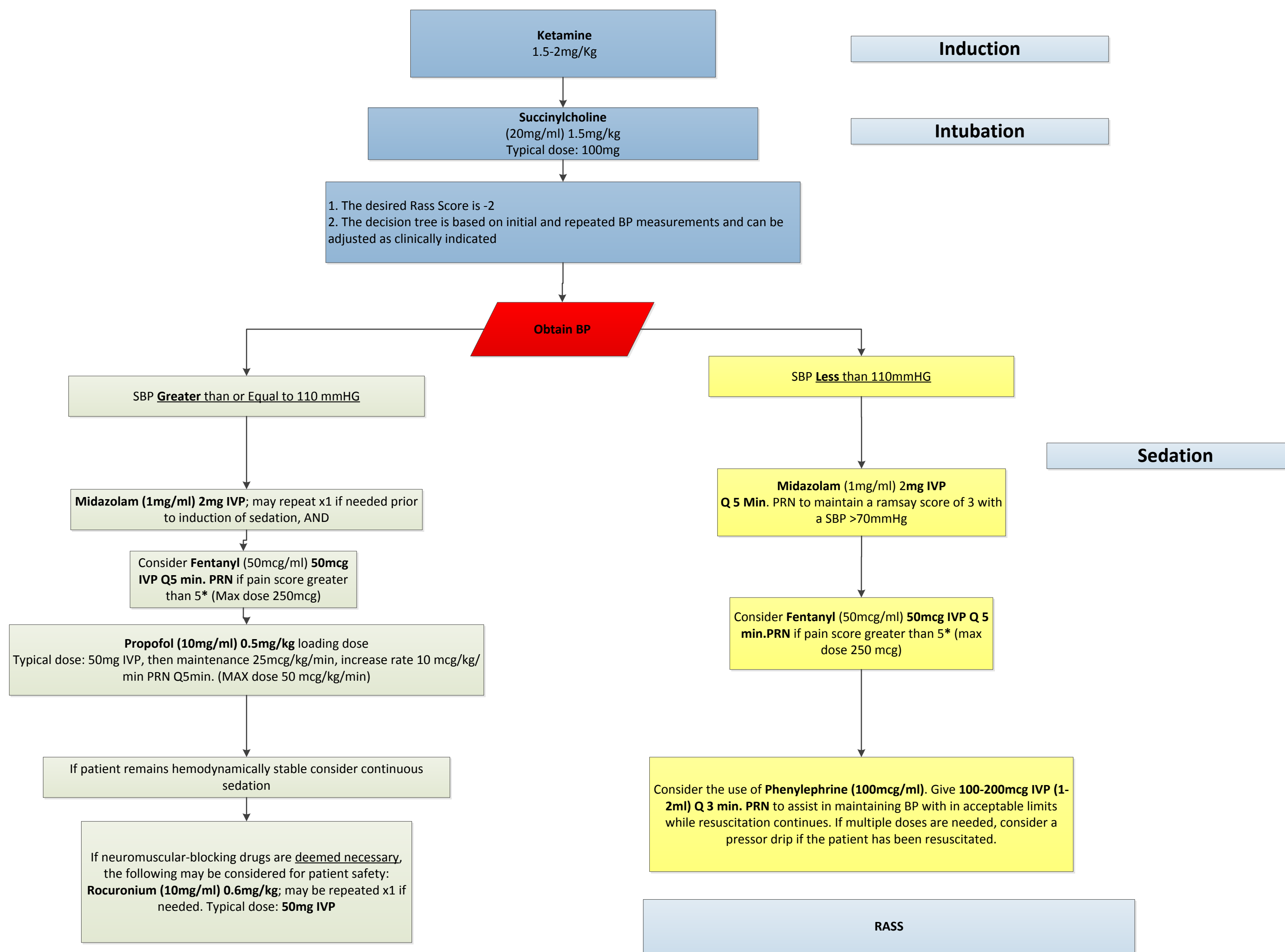


1. Providers involved with sedation for trauma patients must be familiar with the American Society of Anesthesiologists Sedation recommendations, BJH Critical Care Policies/Procedures: Sedation and Analgesia in the Critically Ill Adult, and BJH Organizational Policies/Procedures: Sedation by Non-Anesthesia Personnel for Procedures.
2. Providers must correlate sedation with the patient's condition and hemodynamic status.



* May need to use additional measures for pain score if unresponsive or paralyzed

• +4 Combative	Overtly combative, violent, immediate danger to staff
• +3 Very agitated	Pulls or removes tube(s) or catheter(s); aggressive
• +2 Agitated	Frequent non-purposeful movement, fights ventilator
• +1 Restless	Anxious but movements not aggressive vigorous
• 0 Alert and calm	
• -1 Drowsy	Not fully alert, but has sustained awakening (eye-opening/eye contact) to voice (>10 seconds)
• -2 Light sedation	Briefly awakens with eye contact to voice (<10 seconds)
• -3 Moderate sedation	Movement or eye opening to voice (but no eye contact)
• -4 Deep sedation	No response to voice, but movement or eye opening to physical stimulation
• -5 Unarousable	No response to voice or physical stimulation

NOTE: RASS not able to be obtained if patient paralyzed

Note: Individual, Clinical Judgement Supercedes All Written Guidelines

11/2015