



MUSCULOSKELETAL
RESEARCH CENTER
at Washington University

MUSCULOSKELETAL RESEARCH CENTER

<http://musculoskeletalcore.wustl.edu>

Vol 8 | Issue 2 | Apr 2016

contents

JIT & Award... Pg. 1

Virginia Kraus... Pg. 2



Avioli Musculoskeletal
Seminar Series

Fridays @ 9am

BJCIH Bldg. | 11th flr

A/B Conf. Rm.

DATE	SPEAKER
5/06	Virginia Kraus, MD, PhD Duke University <i>*See pg. 2</i>
5/13	Seminar Cancelled
5/20	Debabrata Patra, PhD Sandell Lab
5/27	Farshid Guilak, PhD Orthopaedic Surgery

Just In Time Program

Applications for Just In Time funding will be accepted earlier this year! Applications for the first round of Just In Time funding will be due **May 15, 2016**. Applicants may apply for up to \$3,000 to support use of the MRC Cores. Please visit our website for more information and to download the application form:

<http://www.musculoskeletalcore.wustl.edu/content/Core/3035/Administrative-Core/Services/Just-In-Time-Funding.aspx>



Farshid Guilak, Basic Science Award Winner and
Linda Sandell, Lifetime Achievement Award Winner

Two members of the MRC were honored at the recent Osteoarthritis Research Society International meeting in Amsterdam. Dr. Linda Sandell received the Lifetime Achievement Award recognizing her contributions to the advancement of the science associated with osteoarthritis. Dr. Sandell served on the OARSI Board of Directors for almost 15 years, guiding the organization to focus on post traumatic OA, early detection of OA and imaging and biochemical biomarkers.

Dr. Farshid Guilak, Professor in the Department of Orthopaedic Surgery, Co-Director of the Center for Regenerative Medicine, and Director of Research, Shriner's Hospitals for Children—St. Louis, received the Basic Science Research Award to recognize excellence in basic science research. Dr. Guilak gave a lecture that surveyed his extensive work in the mechanism of cartilage biomechanics and tissue engineering strategies to repair cartilage.

Please remember to include reference to support from the Musculoskeletal Research Center in your abstracts and publications.

Cite Grant # P30AR057235

from the National Institute Of Arthritis And Musculoskeletal And Skin Diseases.

Research Highlight

Virginia Byers-Kraus, MD, PhD

*Professor of Medicine, Duke University School of Medicine,
Duke Molecular Physiology Institute
Division of Rheumatology, Allergy & Clinical Immunology*



Dr. Virginia Byers-Kraus will be our guest May 5 and 6, 2016, sponsored by the Musculoskeletal Research Center along with the Division of Rheumatology, Department of Medicine. Dr. Kraus is a Rheumatologist specializing in research on early detection and treatment of osteoarthritis.

Thursday, May 5, 2016

Rheumatology Grand Rounds

Scarpellino Auditorium | 9:15-10:15 am

Title: **"OA Pathogenesis (or...things I find remarkable!)"**

Friday, May 6, 2016

Avoli Musculoskeletal Seminar

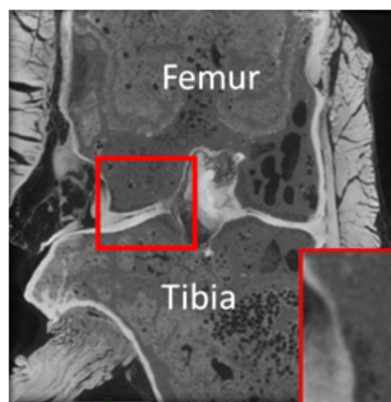
BJCIH Bldg. | 11th Floor. | A/B Conference Room

9:00-10:00 am

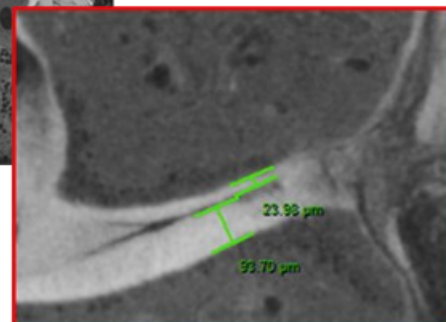
Title: **"The Role of Inflammation in Osteoarthritis."**

S10 High-End Instrumentation Grant Awarded!

Matthew Silva has just been awarded an S10 High-End Instrumentation Grant to fund the purchase of a Zeiss Xradia Versa 520 X-Ray Microscope (SRM). This system will allow sub-micron resolution CT imaging of mineralized and non-mineralized samples, and will complement the existing microCT scanners in Core B (Musculoskeletal Structure and Strength Core). Stay tuned for further details.



XRM scan through mouse knee showing joint structures (from Zeiss).



Core A - Administration

Director

Linda J. Sandell, PhD
314-454-7800
sandelll@wustl.edu



Associate Director

Matthew Silva, PhD
314-362-8585
silvam@wustl.edu



Associate Director

Roberto Civitelli, MD
314-454-8906
rcivitel@dom.wustl.edu



Core B - Structure & Strength

Director

Matthew Silva, PhD
314-362-8585
silvam@wustl.edu



Associate Director

Simon Tang, PhD
314-286-2664
tangs@wustl.edu



Core C - Histology

Director

Deborah Novack, MD, PhD
314-454-8472
novack@wustl.edu



Associate Director

Conrad Wehl, MD, PhD
314-747-6394
wehlc@neuro.wustl.edu



Core D- Animal Models

Director

David Ornitz, PhD
314-362-3908
dornitz@wustl.edu



Associate Director

Fanxin Long, PhD
314-454-8795
flong@wustl.edu



If you have any questions regarding the MRC, contact:

Kamilla McGhee | Core Coordinator | 314.747.5993 | mcgheek@wudosis.wustl.edu