



MUSCULOSKELETAL
RESEARCH CENTER
at Washington University

MUSCULOSKELETAL RESEARCH CENTER

<http://musculoskeletalcore.wustl.edu>

Vol 9 | Issue 2 | Apr 2017

contents

Core News ... Pg. 1

UCSC Workshop Pg. 2



Avioli Musculoskeletal
Seminar Series

Fridays @ 9am

BJCIH Bldg. | 5th flr

Allison Conf. Rm.

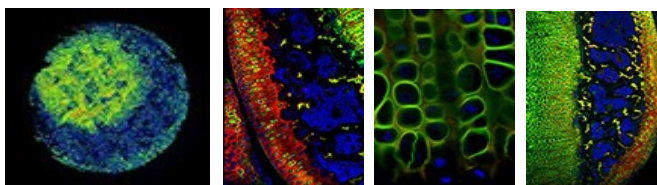
4/07	Steven Mumm, PhD <i>Bone & Mineral Diseases</i>
4/14	Simon Tang, PhD <i>Orthopaedic Surgery</i>
4/21	Yousef Abu-Amer, PhD <i>Orthopaedic Surgery</i>
4/28	Matthew Silva, PhD <i>Orthopaedic Surgery</i>
5/05	No Seminar
5/12	Fanxin Long, PhD <i>Orthopaedic Surgery</i>
5/19	Linda Sandell, PhD <i>Orthopaedic Surgery</i>
5/26	Audrey McAlinden, PhD <i>Orthopaedic Surgery</i>

MRC Cores (MRCC) Migrating to iLab Management System

The Structure and Strength Core (Core B) and the Histology and Morphometry Core (Core C) are migrating to the iLab core lab management system (hosted by Agilent™). All scheduling for equipment, training and service requests will be done through the iLab website. This will help us become more efficient in tracking projects, managing our resources and will allow users and PIs to see estimated costs before approving a project. Current MRCCC users will be registered with an iLab account that links to your Wustl Key.

We plan to go live on **May 1st**. We are planning help sessions for users around that time.

Musculoskeletal Regenerative Medicine and Biology: From Development to Regeneration



May 4-6, 2017

Eric P. Newman Educational Center

Linda Sandell and Farsh Guilak, on behalf of the Washington University Musculoskeletal Research Center and the Center of Regenerative Medicine, are excited to host the inaugural Musculoskeletal Regenerative Medicine and Biology Meeting, to be held at the Washington University Medical School campus, on May 4-6, 2017. This meeting will highlight the importance of foundational developmental biology, with an eye towards transformative therapies.

For more information, please visit:

<http://devbio.wustl.edu/MRMB/index.html>



UCSC Genome Browser Workshop

June 22-23, 2017 | Holden Auditorium, FLTC

Hosted by WUSM, Musculoskeletal Research Center

The MRC is hosting a 2-day hands-on workshop (June 22-23, 2017) on the use of the UCSC Genome Browser (<https://genome.ucsc.edu/training>). Robert Kuhn of the UCSC team will be on campus to lead the workshop. The browser is a powerful bioinformatics tool that is a gateway to genome sequence data from multiple species, as well as a diverse collection of annotation datasets including mRNA alignments, mappings of DNA repeat elements, gene predictions, gene-expression data, variant data, etc. This workshop is geared for novices who have little or no experience with the browser or bioinformatics in general, but will also have advanced content so that experienced users may learn something new. The mornings are lecture/demo format, while the afternoons are for users to work on sample problems that will be provided. This is a registration-required event with a \$35 fee. There is 50-person limit. Each user should bring their own Wi-Fi enabled laptop.

See the agenda below, and click [here](#) to Register.

Agenda

Day 1 (9 am -5 pm)

Intro to the UCSC Genome Browser

- * Browser paradigm
- * Overview of the Browser, what it is, history, settings, searches
- * Starting points for browsing our data:
- * How to find more info about a track or track item

Coffee Break

- * Most popular data sets
- * NGS sequencing data
- * Uploading your data into Custom Tracks
- * Gene info - getting sequences, position and functional info
- * How to get DNA for the region you are viewing
- * Intro to the Table Browser
- * Getting gene sequences

Lunch Break

- * Working through problem set

Day 2 (9 am -5 pm)

Getting more out of the Browser

- * Exon-only Display mode
- * Alt sequences in hg38
- * Table Browser advanced examples
- * Details about Comparative genomics data
- * Track Hubs

Browsing variant data and sensitive data

- * The Variant Annotation Integrator: annotation for your variants all in one place
- * Genome Browser in a Box: Hosting a local copy of the Genome Browser on your laptop

Lunch Break

Advanced problem session to work on example problems
1-on-1 conversations about whatever comes up!

Core A - Administration

Director

Linda J. Sandell, PhD
314-454-7800
sandell@wustl.edu



Associate Director

Matthew Silva, PhD
314-362-8585
silvam@wustl.edu



Associate Director

Roberto Civitelli, MD
314-454-8906
rcivitel@dom.wustl.edu



Core B - Structure & Strength

Director

Matthew Silva, PhD
314-362-8585
silvam@wustl.edu



Associate Director

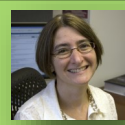
Simon Tang, PhD
314-286-2664
tangsim@wustl.edu



Core C - Histology

Director

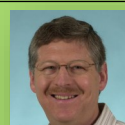
Deborah Novack, MD, PhD
314-454-8472
novack@wustl.edu



Core D- Animal Models

Director

David Ornitz, PhD
314-362-3908
dornitz@wustl.edu



Associate Director

Fanxin Long, PhD
314-454-8795
flong@wustl.edu



If you have any questions regarding the MRC, contact:

Kamilla McGhee | Core Coordinator | 314.747.5993 | mcgheek@wudosis.wustl.edu