



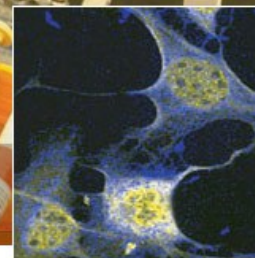
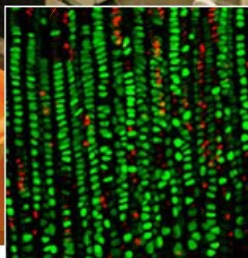
Musculoskeletal Research Center

Vol 6 | Issue 4 | July 2014

MUSCULOSKELETAL
RESEARCH CENTER
at Washington University



WORK WITH THE BEST
TO GET THE BEST RESULTS



in this issue

JIT & Seminar schedules... p. 1
Core B and Core C.. p. 2

NEW Just In Time program

Just in Time program now available! Applicants may apply for up to \$3,000 to support use of the MRC Cores. Please visit our website for more information and to download application form:

<http://www.musculoskeletalcore.wustl.edu/content/Core/3035/A-Administrative-Core/Services/Just-In-Time-Funding.aspx>

Skeletal Biology & Pathophysiology Mini-Course

Date	Speaker	Topic
8/1	Roberto Civitelli, MD Division of Bone and Mineral Diseases	Skeletal Endocrinology
8/8	Stavros Thomopoulos, PhD Dept. of Orthopaedic Surgery	Biomineralization/Collagen Structure
8/15	Audrey McAlinden, PhD Dept. of Orthopaedic Surgery	Joints, Growth Plates, Development
8/22	Fanxin Long, PhD Dept. of Orthopaedic Surgery	Bone formation and maintenance, including osteocytes
8/29	Matthew Silva, PhD Dept. of Orthopaedic Surgery	Biomechanics 101
9/5	Deborah Novack, MD., PhD Division of Bone and Mineral Diseases	Bone Turnover, Coupling



**Summer
Educational
Series**

**Fridays @ 9am
BJCIH Bldg.
11th floor
A/B Conf. Rm.**

7/11 **Dr. Deborah Novack**
Bone & Mineral Diseases
"What's New in Histomorphometry"

7/25 **Dr. David Ornitz**
Developmental Biology
"Mouse Engineering Technology"

For more information about the MRC and the Cores, please click here:

<http://musculoskeletalcore.wustl.edu>

Please remember to include reference to support from the Musculoskeletal Research Center in your abstracts and publications.

Cite Grant # P30AR057235
from the National Institute Of Arthritis And Musculoskeletal And Skin Diseases.

Core B News

Increase in Fees. To help fill a deficit in our budget we are increasing the rates for several services. This is the first increase in 2 years. VivaCT scanning will increase from \$50 to \$60/hr. Technical support will increase from \$40 to \$60/hr. These fees were approved by the Core Directors in May and will take effect July 1. (MRC Research Base Members get a 50% discount. Not sure you are a member? Check with Kami McGhee mcgheek@wudosis.wustl.edu)

Mandatory Training for CT Users. Each and every person using the CT scanners or other imaging equipment (DXA, Faxitron) must be trained by Dan Leib (leibd@wudosis.wustl.edu). This is to ensure safe use of the equipment and quality control of your data. We have seen some inappropriate scanning/analysis because users are working with outdated or inappropriate protocols. Be sure to check in with Dan before starting a new project!

CT User's Group Meetings. Dan Leib has organized a new forum for CT users to learn from the experts and from each other. Come and ask questions about your project! Dates are May 22, June 19, July 17, and Aug 14 in the BJCIH 11th Floor Conf. Rm A/B at 12:00-1:00. BYOLunch.

Enhancements. We have made many upgrades to improve user productivity -- getting results from your scans should be easier than ever. See Dan Leib to learn more about how these changes can help you with your project or visit our website to learn more: <http://www.musculoskeletalcore.wustl.edu/content/Core/3030/B-Structure-and-Strength-Core/Services/Core-B-News.aspx>

Goodbye to SharePoint. We no longer will use SharePoint for anything. Signups are via <https://accounts.google.com/> Click add account, and sign in with username "mrcoreb" and password "mousebone4!" See Dan if you have any questions on how to log in or view the calendars. We are also in the process of posting all of our FAQs and user support documents on our website <http://www.musculoskeletalcore.wustl.edu/content/Core/2974/B-Structure-and-Strength-Core/Services/Overview.aspx>

Seminars/Lectures: The link to Dr. Silva's seminar presented on June 20 ("Bone Imaging & Mechanical Testing") is available here:

<http://www.musculoskeletalcore.wustl.edu/content/Calendar/3020/Summer-Educational-Series.aspx>

As part of the Skeletal Biology & Pathophysiology Mini-Course, Dr. Thomopoulos will present "Biom mineralization/Collage Structure" on Aug 8, and Dr. Silva will present "Biomechanics 101" on Aug 29.

Core C News

Notice from Musculoskeletal Histology and Morphometry Core:

Effective immediately:

Charges for plastic (MMA) embedding and sectioning will increase 15%.

All other charges will increase by 10%.

Core member discounts remain in place.

Please visit our website for pricing details:
[Histology and Morphometry Core \(Core C\)](#)



Core Directors

Core A - Administration

Director

Linda J. Sandell, PhD
314-454-7800
sandelll@wustl.edu



Associate Director

Matthew Silva, PhD
314-362-8585
silvam@wustl.edu



Associate Director

Roberto Civitelli, MD
314-454-8906
rcivitel@dom.wustl.edu



Core B - Structure & Strength

Director

Matthew Silva, PhD
314-362-8585
silvam@wustl.edu



Associate Director

Steve Thomopoulos, PhD
314-362-8605
thomopouloss@wustl.edu



Associate Director

Simon Tang, PhD
314-286-2664
tangs@wudosiswustl.edu



Core C - Histology

Director

Deborah Novack, MD, PhD
314-454-8472
novack@wustl.edu



Associate Director

Conrad Wehl, MD, PhD
314-747-6394
weihlc@neuro.wustl.edu



Core D- Mouse Models

Director

David Ornitz, PhD
314-362-3908
dornitz@wustl.edu



Associate Director

Fanxin Long, PhD
314-454-8795
flong@wustl.edu



If you have any questions regarding the MRC, please contact:

Kamilla McGhee | Core Coordinator | 314.747.5993 | mcgheek@wustl.edu