



MUSCULOSKELETAL
RESEARCH CENTER
at Washington University

MUSCULOSKELETAL RESEARCH CENTER

<http://musculoskeletalcore.wustl.edu>

Vol 9 | Issue 3 | June 2017

contents

JIT & MRMB Meeting ... Pg. 1

MRMB Meeting (cont.) Pg. 2



Fridays @ 9am

BJCIH Bldg. | 5th flr | Allison Conf. Rm.

6/23 **UCSC Genome Browser Workshop**
*Holden Aud. | FLTC
(registration required)

6/30 **Simon Tang, PhD**
Orthopaedic Surgery

Skeletal Biology Mini-Course

Fridays @ 9am

BJCIH Bldg. | 5th flr | Allison Conf. Rm.

8/4 **Regis O'Keefe, MD, PhD**
Fracture and Bone Regeneration
Orthopaedic Surgery

9/15 **Naga Yalla, MD**
Secondary Osteoporosis
Div. of Bone & Mineral Diseases

9/22 **Deb Novack, MD, PhD**
Osteomyelitis
Div. of Bone & Mineral Diseases

9/29 **Michael Whyte, MD**
Genetic Disorders of Bone
Resorption
Div. of Bone & Mineral Diseases

10/6 **Matthew Warman, MD**
Genetic Disorders of Bone
Formation
Harvard Medical School

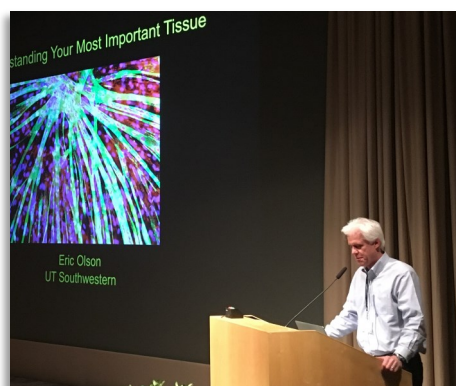
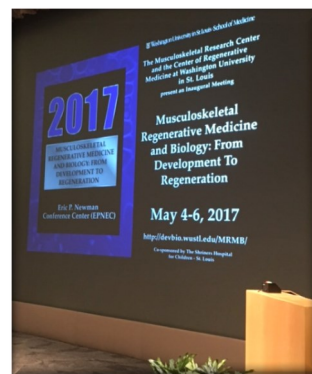
Just In Time Funding

We are currently accepting new applications for Just In Time funding. Applicants may apply for up to \$3,000 to support use of the MRC Cores. Please visit our website for more information and to download the application form:

<http://www.musculoskeletalcore.wustl.edu/content/Core/3035/Administrative-Core/Services/Just-In-Time-Funding.aspx>

Musculoskeletal Regenerative Medicine and Biology: From Development to Regeneration

In place of our Annual Symposium, we tried something new this year. With the appointment of Dr. Farshid Guilak in the Department of Orthopaedic Surgery and as Co-Director of the Center for Regenerative Medicine, we sought to synergize our interests in Musculoskeletal Biology and Regenerative Medicine. Thus the first combined meeting of the Center for Musculoskeletal Research (MRC) and the Center of Regenerative Medicine (CRM) was held May 4-6, 2017 with the theme: From Development to Regeneration. The goal of the meeting was twofold: (1) to bring in experts in areas not usually available at Washington University to broaden



the scientific perspective of our members and guests and (2) to introduce the two Centers to a wider scientific audience nationally and internationally. The implementation of these goals was supported by both Centers, the Departments of Medicine, Orthopaedic Surgery and Developmental Biology, the Medical School, the Engineering School and the Shriners' Hospital - it was truly a pan-Washington University effort. (cont. on pg.2)

Please remember to include reference to support from the Musculoskeletal Research Center in your abstracts and publications.

Cite Grant # P30AR057235

from the National Institute Of Arthritis And Musculoskeletal And Skin Diseases.



Musculoskeletal Regenerative Medicine and Biology: From Development to Regeneration (*continued*)

Attendees enjoyed Keynote talks by Dr. Olivier Pourquie (Harvard Stem Cell Institute) on development of muscle and by Dr. Eric Olson (University of Texas – Southwestern) on regeneration of muscle. Two poster sessions were held with a fun dinner at the St. Louis Zoo. Dr. Elly Tanaka (Research Institute of Molecular Pathology, Vienna, Austria) spoke on regeneration of amphibian limbs at the Zoo. We had talks on topics from Stem Cells and Differentiation to Reprogramming and Engineering Cells as well as Materials and Drug Delivery in Tissue Regeneration. We hope that everyone was able to find some new principles, techniques or systems that will augment their research projects and broaden our research endeavors!



Keynote Speakers



Pourquie



Olson



Tanaka

Core A - Administration

Director

Linda J. Sandell, PhD
314-454-7800
sandelll@wustl.edu



Associate Director

Matthew Silva, PhD
314-362-8585
silvam@wustl.edu



Associate Director

Roberto Civitelli, MD
314-454-8906
rcivitel@dom.wustl.edu



Core B - Structure & Strength

Director

Matthew Silva, PhD
314-362-8585
silvam@wustl.edu



Associate Director

Simon Tang, PhD
314-286-2664
tangst@wustl.edu



Core C - Histology

Director

Deborah Novack, MD, PhD
314-454-8472
novack@wustl.edu



Core D - Animal Models

Director

David Ornitz, PhD
314-362-3908
dornitz@wustl.edu



Associate Director

Fanxin Long, PhD
314-454-8795
flong@wustl.edu



If you have any questions regarding the MRC, contact:

Kamilla McGhee | Core Coordinator | 314.747.5993 | mcgheek@wudosis.wustl.edu