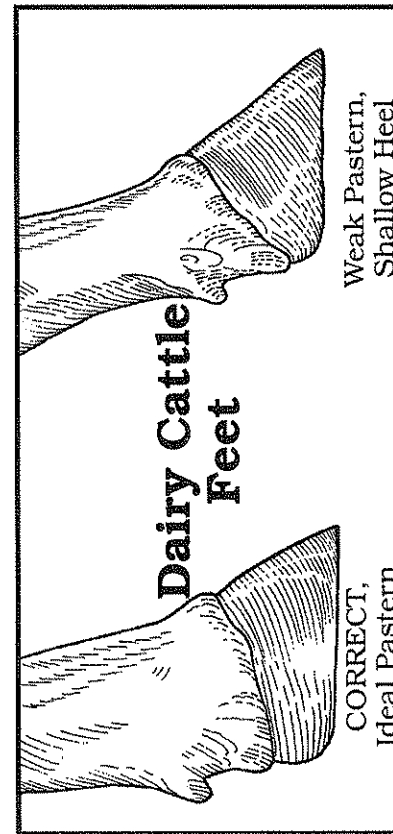
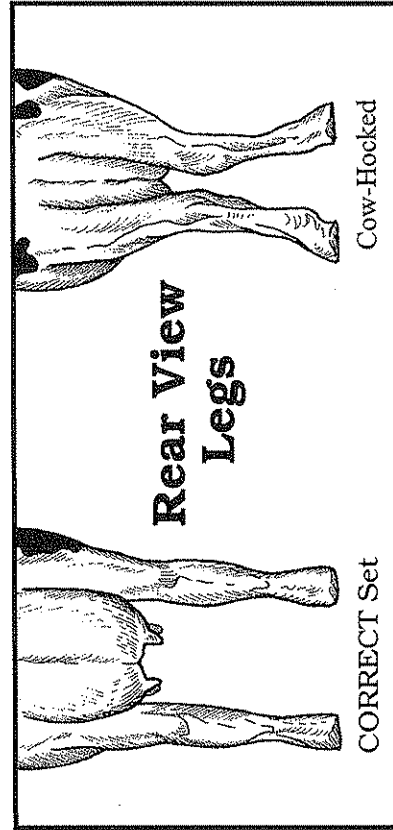
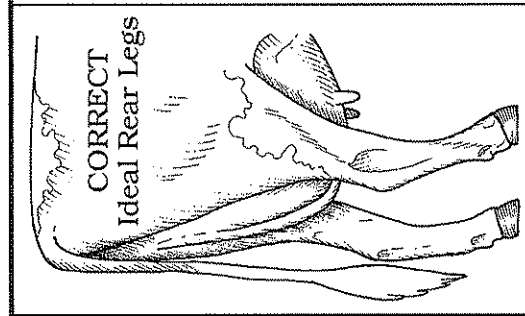
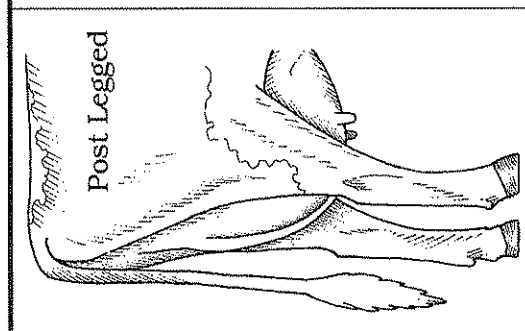
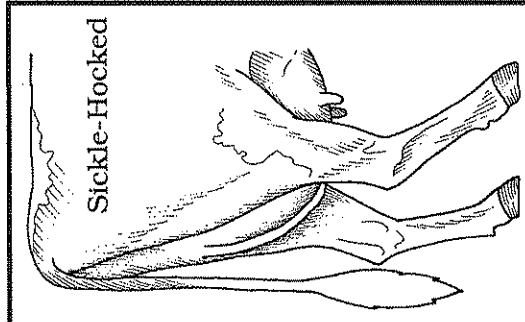
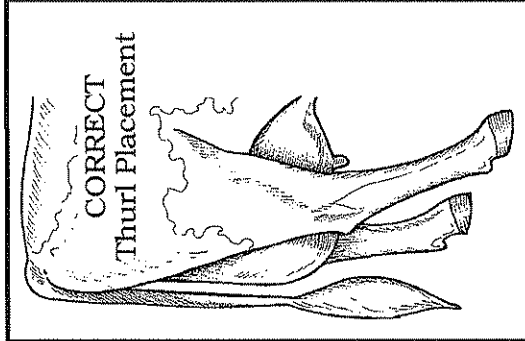
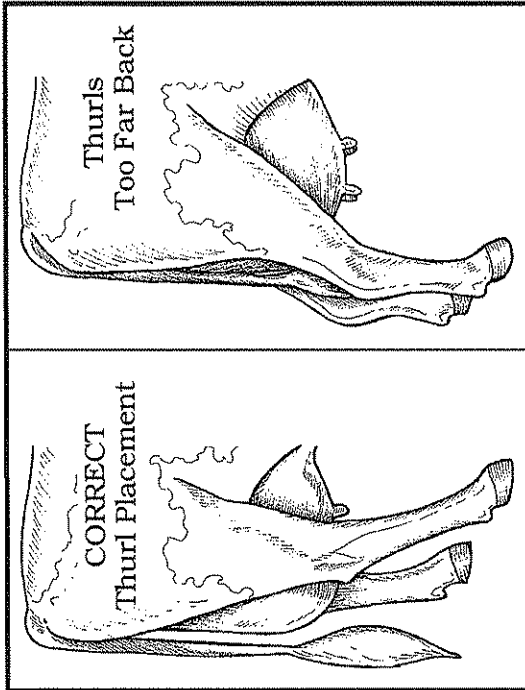


Use this poster in conjunction with Feet & Leg Structure - Match Names with Diagrams situation/task statement and/or Dairy Cattle Feet and Leg Structure identification tags.

Dairy Cattle Feet and Leg Structures

Thurl Placement



DAIRY
LEARNING LABORATORY KIT

Quality Assurance and Animal Care: Youth Education Program
This material is based upon work supported by Extension Service,
United States Department of Agriculture, under special project number 93-EFSQ-4096.
Product distribution through the Ohio Agricultural Education Curriculum Materials Service