
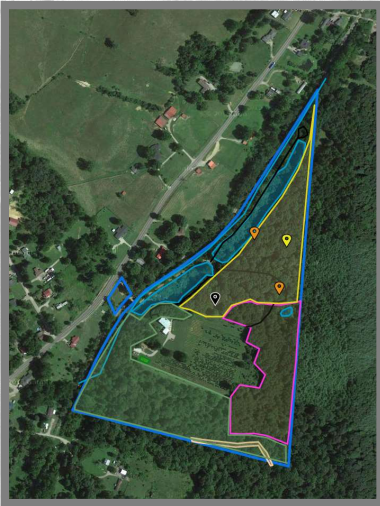



Using My Land Plan to Plan, Map, and Document Your Woodland Activities


Dave Apsley
Natural Resources Specialist
OSU Extension



American Forest Foundation
My Land Plan
The woodland owner's resource







THE OHIO STATE UNIVERSITY
COLLEGE OF FOOD, AGRICULTURAL,
AND ENVIRONMENTAL SCIENCES

1

Thoughts before diving into My Land Plan

- My Land Plan is a great tool to augment your forest management plan
- It is not a substitute for a plan developed with the help of a professional forester or other natural resources professional.
- It is a great place to track your progress and make modifications
- If you already have a management plan, consider transferring it into My Land Plan



2

<http://mylandplan.org>



3

Start Using the Land Plan Tool!

Email Address * Re-Enter Email Address *

First Name * Last Name *

Zipcode *
5 number or 5+4 format. Examples - 48530 or 48530-2134

Password * Password strength:

Confirm password *

Provide a password for the new account in both fields.

How did you hear about My Land Plan?
☐ Search engine (Google, Bing)
☐ Facebook

ABOUT MY LAND PLAN
 This American Forest Foundation tool is helping thousands of woodland owners get the most out of their property!

What is it?
 A resource for woodland owners, by woodland owners to help you protect and enjoy your woods. [Click here to play video](#)

How does it work?
 Spend time on informational pages or go right to the AFF planning tool to map your land, set your goals, and receive tailored information to help achieve them.

4

American Forest Foundation
My Land Plan
The woodland owner's resource

My Plan | Support Us | About Us | Log out
Keyword Search

What do you want to do with your land?
Enjoy it | Protect it | Make it healthy | Profit from it | Pass it on | Find Help | **My Plan**

✓ Property Apsley has been deleted.

My Land + Add a property

Take the Legacy Pledge
TAKE THE LEGACY PLEDGE TODAY!
Join your fellow MyLandPlan.org users who have committed to taking steps to ensure the future of their woodlands. The pledge outlines six simple steps you can take to help plan for your legacy, no matter if you are just getting started or done with your plan and ready to put it in action. [Take the pledge](#)

APSLEY
19704 Ohio 93, Wellston, OH 45692
Approximate Acreage: 31.61
Goals: 0 | Activities: 0
Upcoming Tasks: 0 | Overdue Tasks: 0
[Delete this property](#)

overview
Map | Tasks
Goals/Activities | Journal

Tutorials hide


How to add property boundaries | How to add features to your map | Setting goals and activities | Creating tasks for your property

5


My Land

Plotting your land's future

Let's give your property a name (like *Reed Farm* or *northern tract*) and add location information (address, city, state).

 **Add Your Land's Location**

6

 State field is required.

Property Title *

Apsley

Location of Your Land

Address 1

19704 Ohio 93

Address 2

City

Wellston

State *

Ohio


Zip Code

45692

If you are a member of the American Tree Farm System, enter your ATFS number here. (Optional)

Continue


7



Set your **boundaries**

Click on the **Add New Boundary** button to map the boundaries of your land. Click the button again for an additional boundary. Once you are done, click **Save and Map My Features**

Need Help?



Click on the help icon to watch a video all about mapping boundaries

8

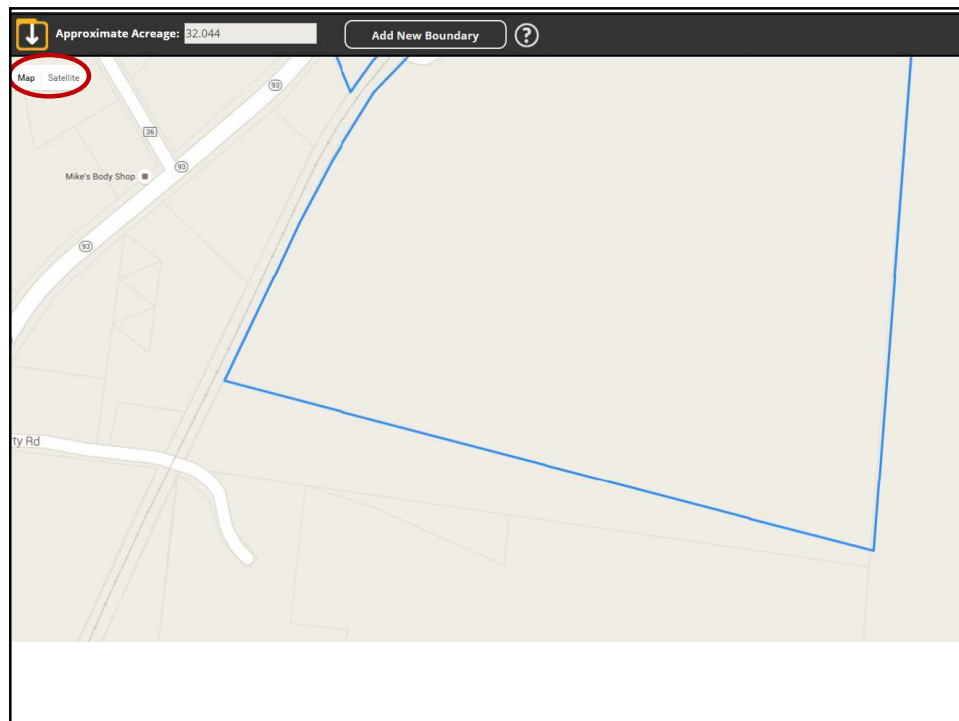
To draw boundaries

If property lines appear, use Map mode (upper left, otherwise use satellite mode.

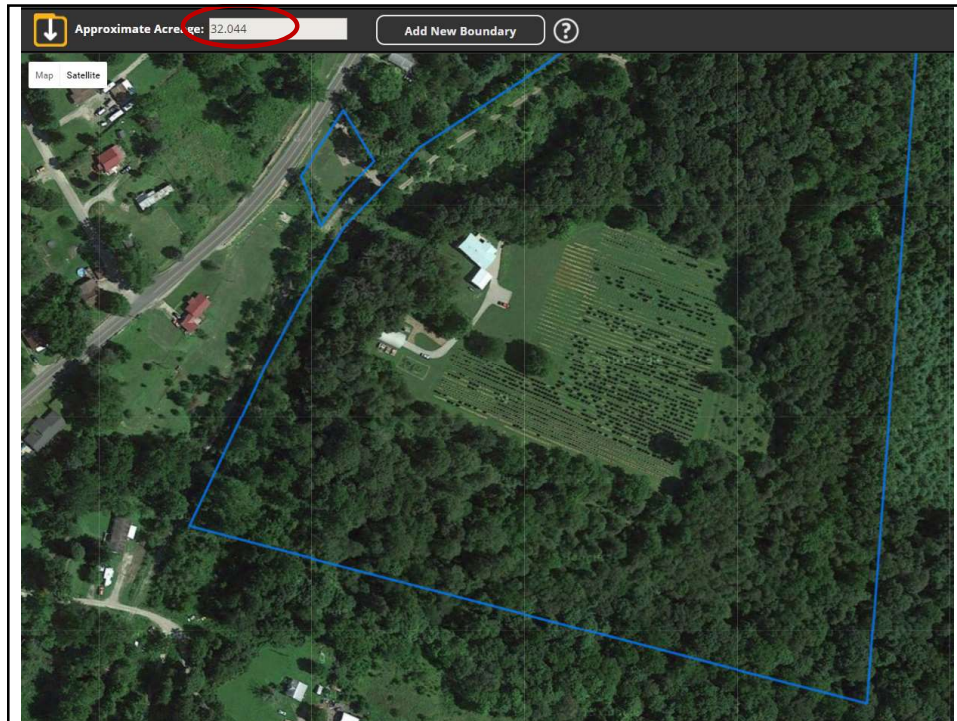
- Make sure terrain box is not checked (below "Map")
- Use + and – key (Upper right) to zoom to appropriate scale.
- Position the cross hair on boundary and click to add each point
 - Trace boundary adding as many points as needed
- Double click when you return to the starting point
- Boundary will appear in blue
- Approximate acreage appears in upper left.

CFAES

9



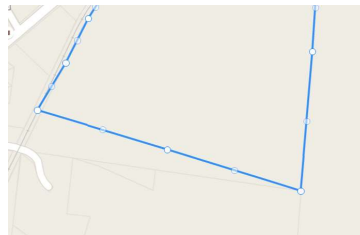
10



11

To edit boundaries

- Click on Map followed by Map Boundary
- Left Click on the **blue boundary**
- Grab and move points as needed
- Switch between modes as needed
 - i.e. Map with or without terrain
 - Satellite
- Right click to edit or remove a point
- You can now to enter a GPS coordinate of known locations e.g. property corners



Edit Point

Adjust the values in the latitude and longitude boxes to fine tune this point and click 'Save This Point', or click the 'Delete This Point' button to remove it entirely

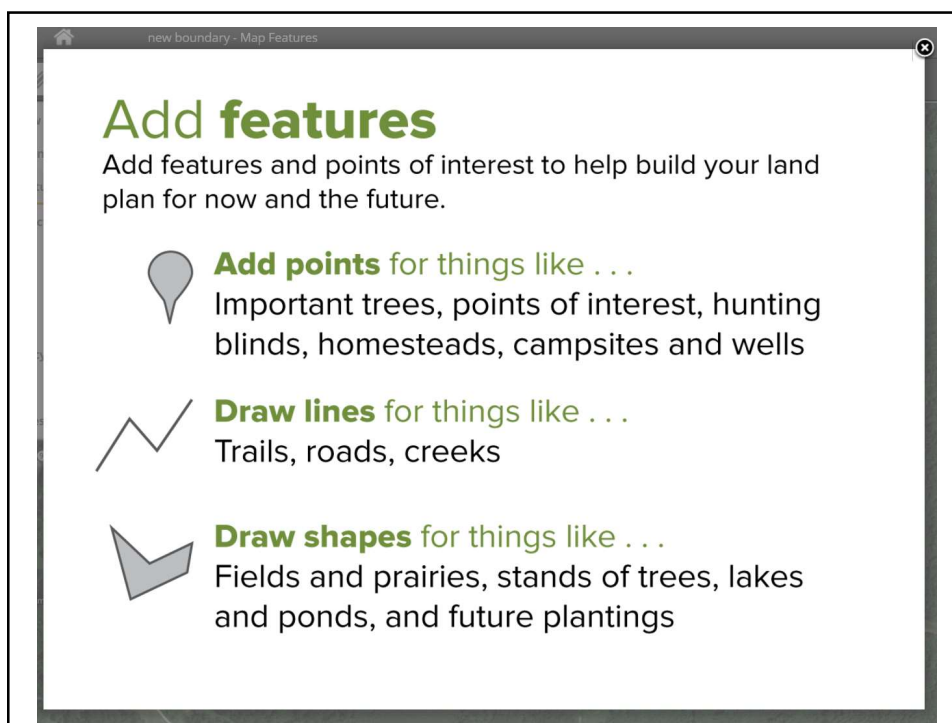
Latitude:

Longitude:

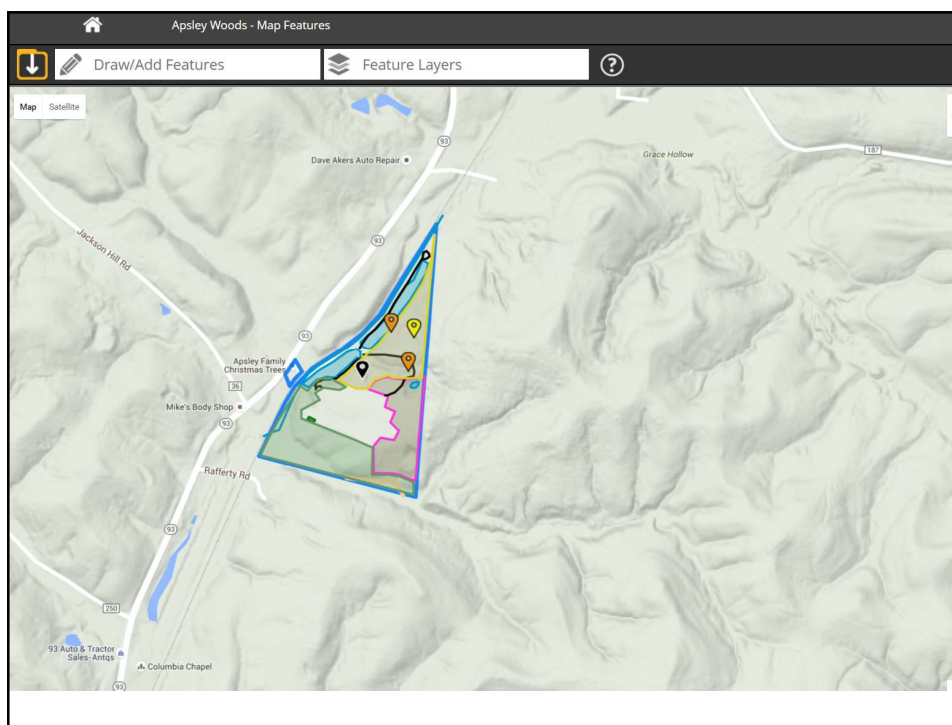
How to change or remove a boundary

CFAES

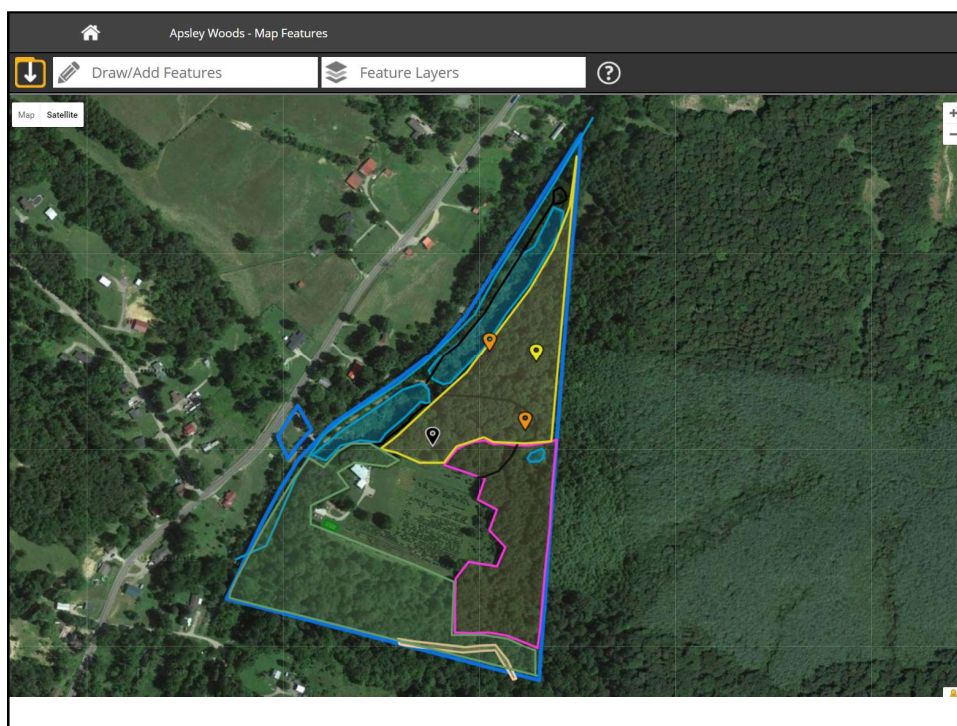
12



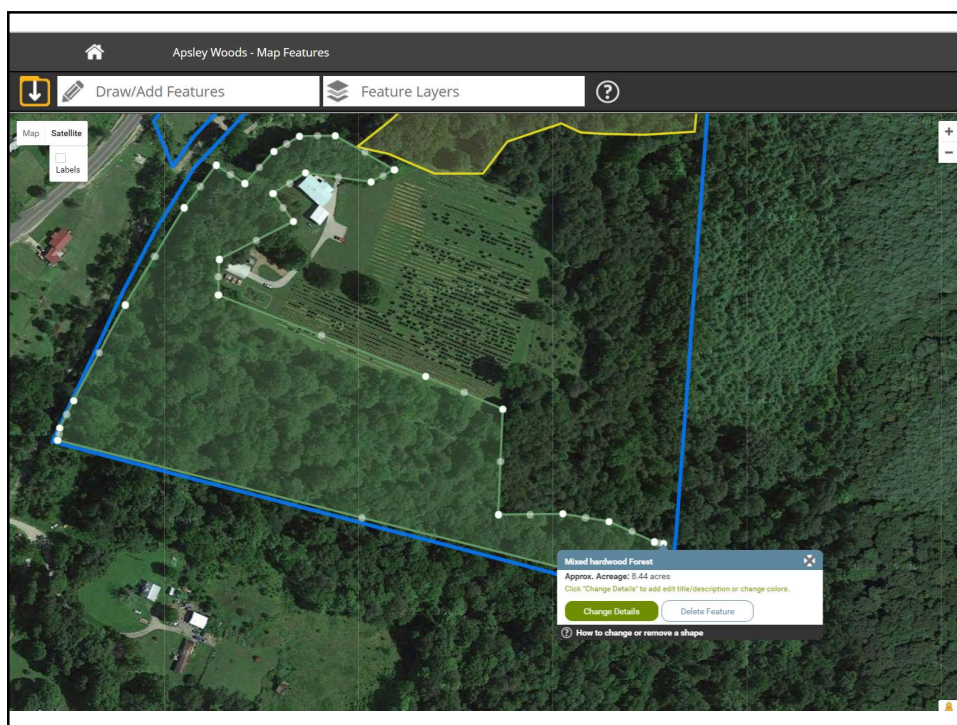
13



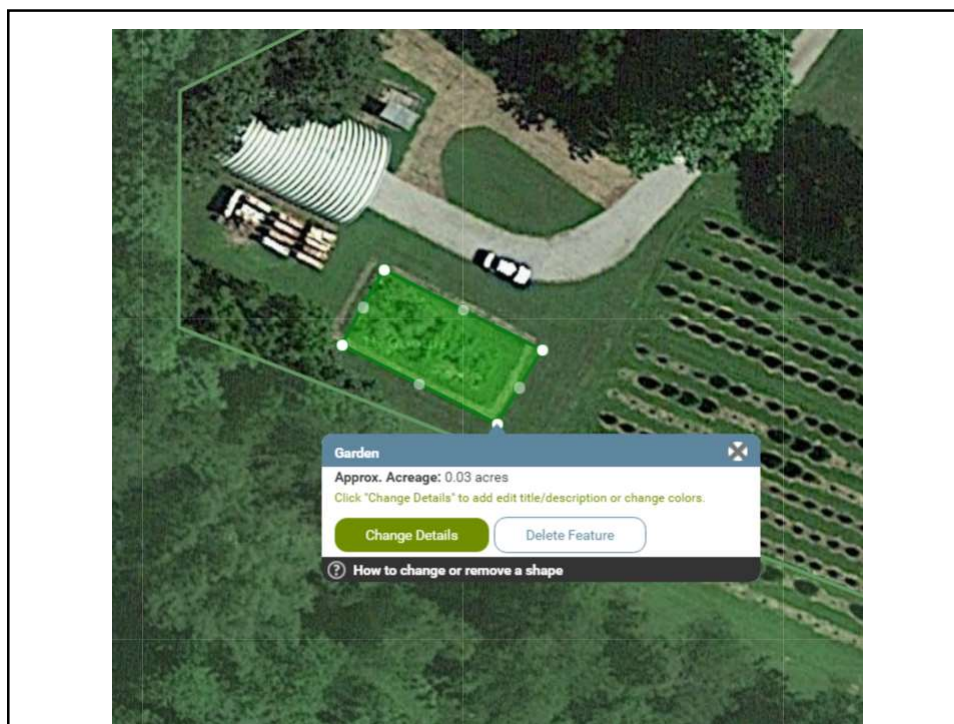
14



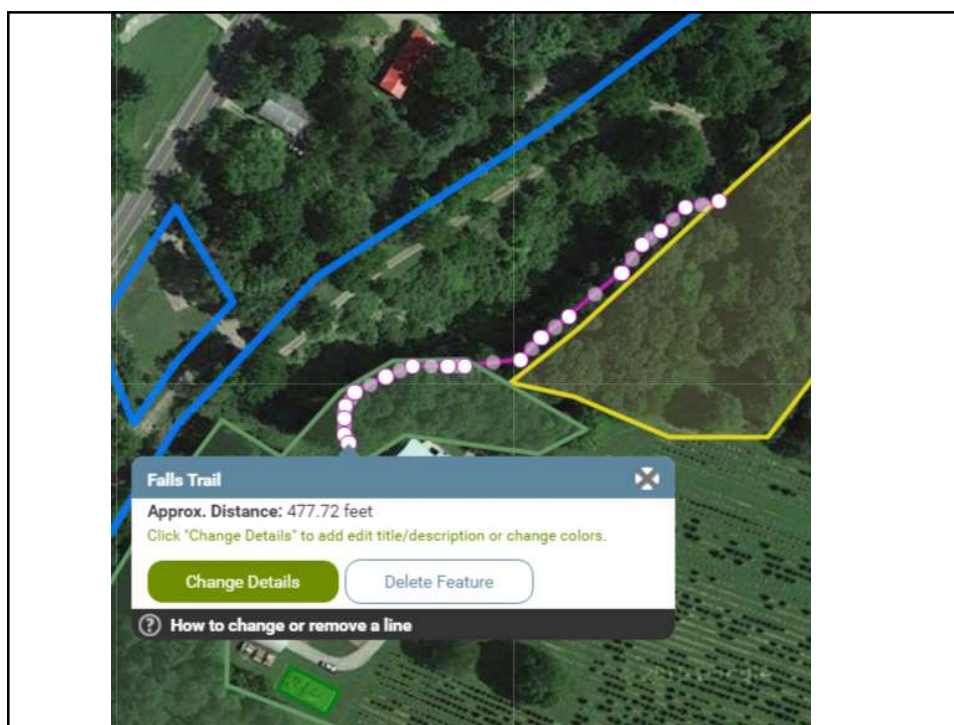
15



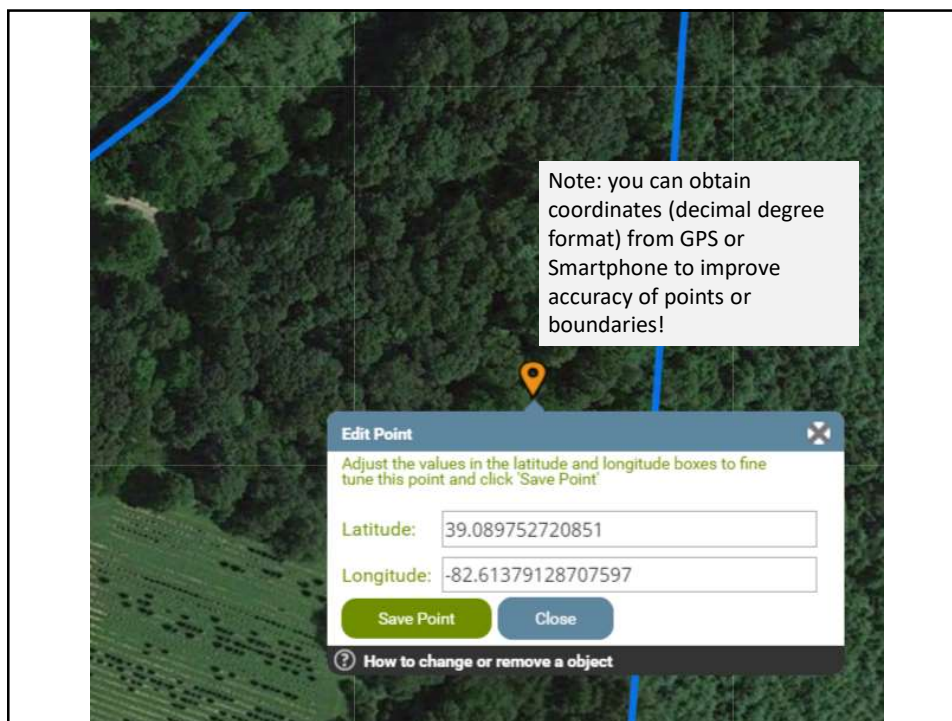
16



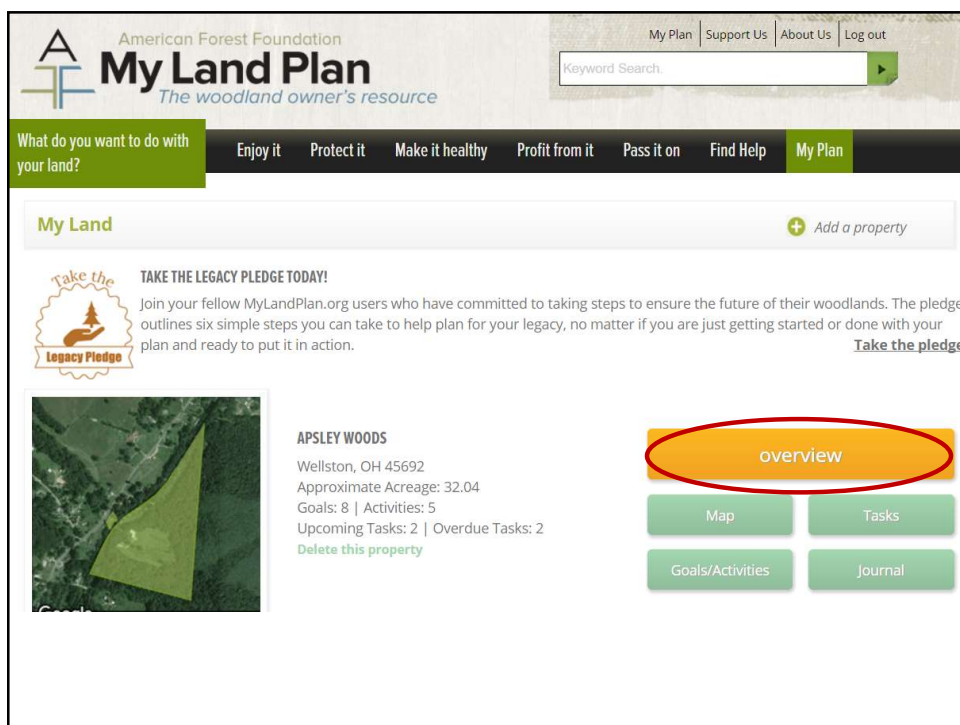
17



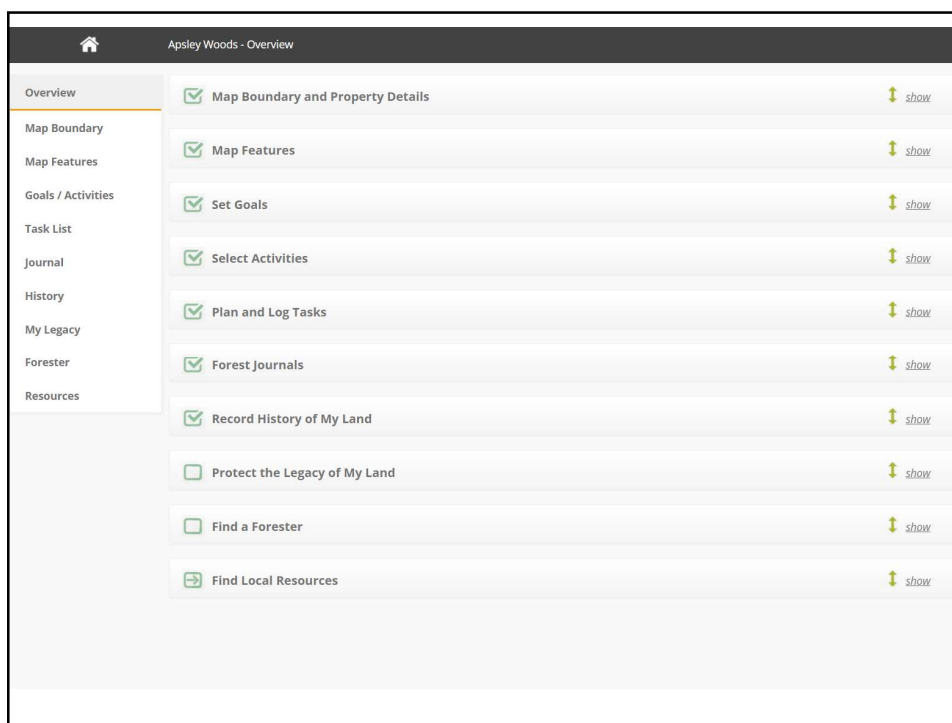
18



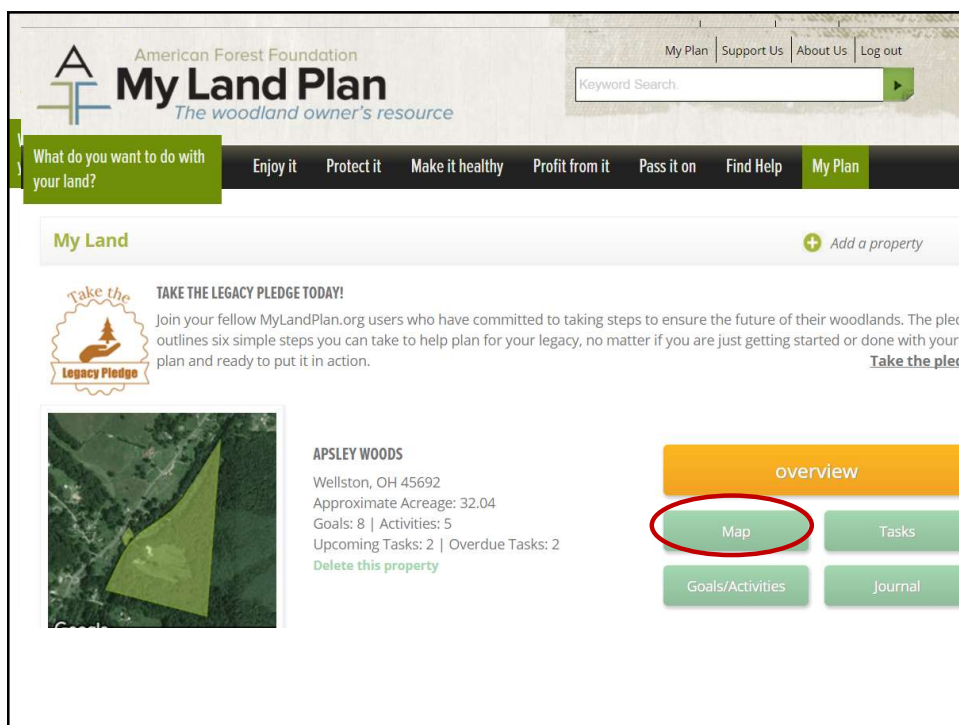
19



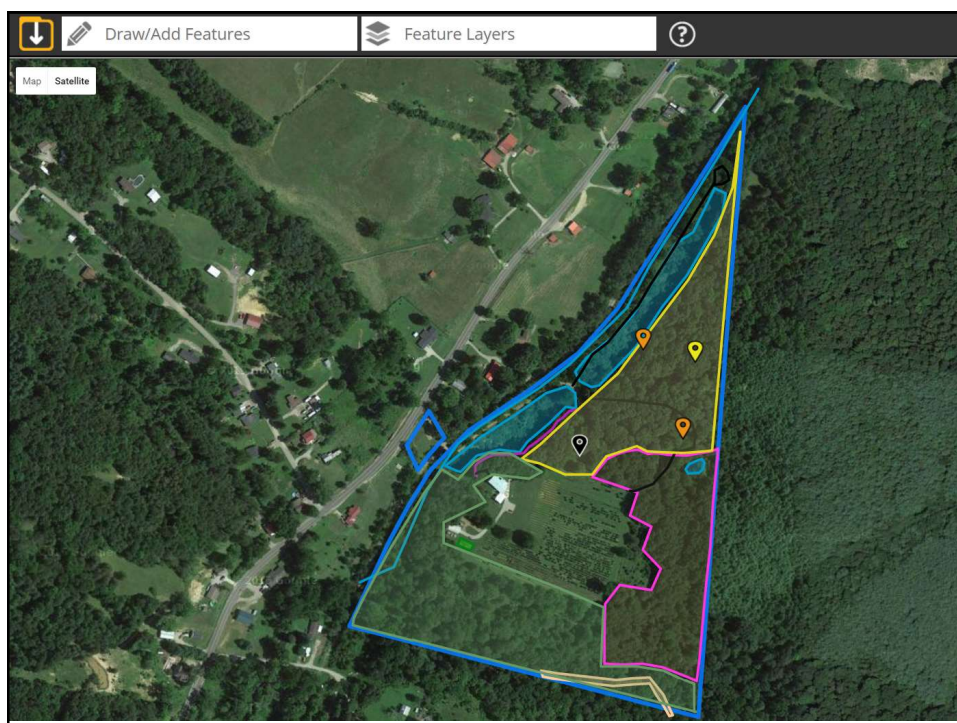
20



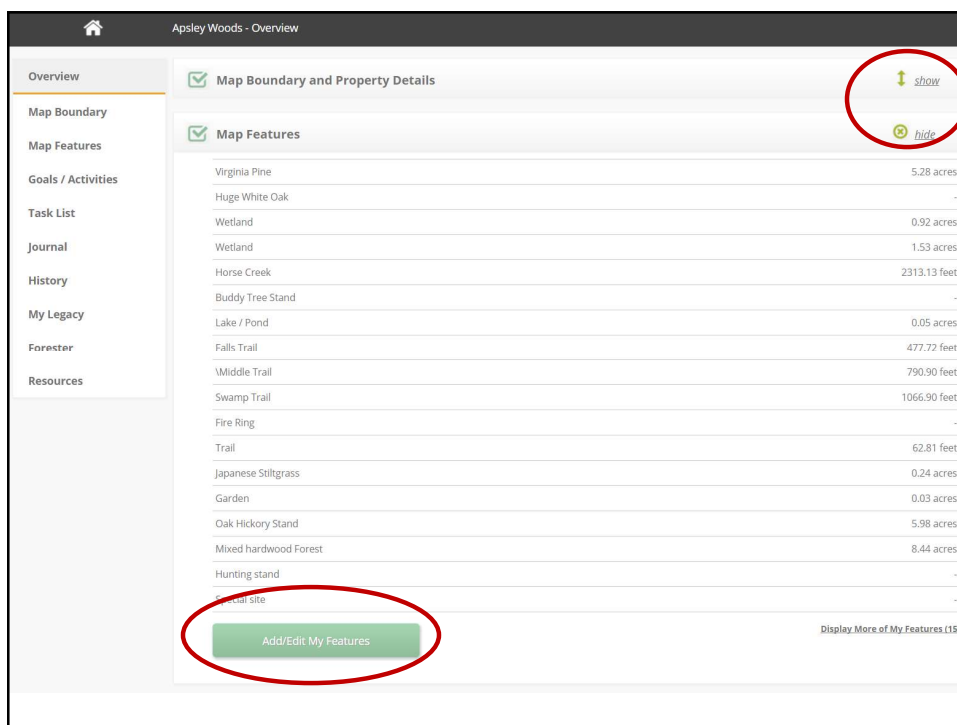
21




22



23



24



American Forest Foundation

MyLandPlan

The woodland owner's resource


My Plan | Support Us | About Us | Log out

Keyword Search


What do you want to do with your land?

[Enjoy it](#)
[Protect it](#)
[Make it healthy](#)
[Profit from it](#)
[Pass it on](#)
[Find Help](#)
[My Plan](#)

My Land + Add a property



TAKE THE LEGACY PLEDGE TODAY!
Join your fellow MyLandPlan.org users who have committed to taking steps to ensure the future of their woodlands. The pledge outlines six simple steps you can take to help plan for your legacy, no matter if you are just getting started or done with your plan and ready to put it in action.



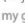
APSLEY WOODS
Wellston, OH 45692
Approximate Acreage: 32.04
Goals: 8 | Activities: 5
Upcoming Tasks: 2 | Overdue Tasks: 2
[Delete this property](#)

overview

[Map](#)
[Tasks](#)
[Goals/Activities](#)
[Journal](#)













25

Step 1: Choose a topic (Enjoy it, Protect it, etc.) below to see related goals


Step 2: Click  add to my goals to add this goal to your list

Step 3: Select show arrows to see the activities associated with that goal

[Enjoy it](#)
[Protect it](#)
[Make it healthy](#)
[Profit from it](#)
[Pass it on](#)

Goal: Improve wildlife viewing	 remove from goals	 show
Goal: Improve deer habitat	 remove from goals	 show
Goal: Make my land a great place for birding	 remove from goals	 show
Goal: Make it a great place to hike and camp	 remove from goals	 show
Goal: Improve turkey habitat	 add to my goals	 show
Goal: Make it a great place to fish	 add to my goals	 show

26



American Forest Foundation

My Land Plan

The woodland owner's resource


[My Plan](#)
[Support Us](#)
[About Us](#)
[Log out](#)

What do you want to do with your land?

[Enjoy it](#)
[Protect it](#)
[Make it healthy](#)
[Profit from it](#)
[Pass it on](#)
[Find Help](#)
[My Plan](#)


My Land

+ Add a property



TAKE THE LEGACY PLEDGE TODAY!
Join your fellow MyLandPlan.org users who have committed to taking steps to ensure the future of their woodlands. The pledge outlines six simple steps you can take to help plan for your legacy, no matter if you are just getting started or done with your plan and ready to put it in action.

[Take the pledge](#)



APSLEY WOODS
Wellston, OH 45692
Approximate Acreage: 32.04
Goals: 8 | Activities: 5
Upcoming Tasks: 2 | Overdue Tasks: 2
[Delete this property](#)

overview

Map
Tasks
Goals/Activities
Journal


27

Add Task

Filter by Status
- Any - [Apply](#)

	Title	Status	Date	Reminder Date
Edit Delete	Freshen Boundary Paint	Planned	6.15.2016	
Edit Delete	Plant 500 Canaan Fir	In Progress	4.4.2016	
Edit Delete	Create Rabbitat	In Progress	3.31.2016	
Edit Delete	Walk my woods!	In Progress	3.29.2016	
Edit Delete	Create Rabbitat	Completed	3.12.2016	
Edit Delete	Barberry RX	Completed	5.4.2015	
Edit Delete	Fertilize Canaan Fir	Completed	5.2.2015	
Edit Delete	Treated stumps to prevent Pales Weevil	Completed	4.18.2015	
Edit Delete	Planted 500 Canaan Fir seedlings	Completed	4.11.2015	
Edit Delete	Treat Privet along stream	Completed	9.14.2013	
Edit Delete	Treat Stiltgrass	In Progress	8.2.2013	
Edit Delete	Crop Tree Release in Oak Hickory Stand	Completed	8.15.2008	

28




American Forest Foundation
My Land Plan
The woodland owner's resource


[My Plan](#) | [Support Us](#) | [About Us](#) | [Log out](#)

What do you want to do with your land?
Enjoy it | Protect it | Make it healthy | Profit from it | Pass it on | Find Help | **My Plan**

My Land
[+ Add a property](#)



TAKE THE LEGACY PLEDGE TODAY!
Join your fellow MyLandPlan.org users who have committed to taking steps to ensure the future of their woodlands. The pledge outlines six simple steps you can take to help plan for your legacy, no matter if you are just getting started or done with your plan and ready to put it in action.
[Take the pledge](#)



APSLEY WOODS
Wellston, OH 45692
Approximate Acreage: 32.04
Goals: 8 | Activities: 5
Upcoming Tasks: 2 | Overdue Tasks: 2
[Delete this property](#)

overview

Map | Tasks

Goals/Activities | **Journal**

29


Add Journal Entry

New method of Privet Control
Wednesday, November 11, 2015 at Apsley Woods

Trying something new on October 10th. Used a wick applicator to treat privet stems. Applicator is called a side swipe. 6 ounces of Relgate (Triclopyr) mixed with kerosene for a total of 20 oz of mixture. Treated dozens of stems. Now it is time to wait and see if it works

Stiltgrass oh my!
Wednesday, October 02, 2013 at Apsley Woods

On Sunday when I was out maintaining trails, I noticed a small patch of Japanese stiltgrass in a bottomland area near an intermittent stream. I decided to explore a bit and try to determine the origin. To my surprise I found a large patch that recently established in the drainage channel of the stream. It appears that the seed washed in and was deposited on both sides of the channel. Bummer!!! Since some of the stiltgrass appeared not to be mature, I decided to treat with Glyphosate. I used Rodeo which is safe for aquatic use and treated the...



Privet Control-- Finally!
Saturday, September 14, 2013 at Apsley Woods

I finally got around to treating some privet. Normally this would be a great time to treat privet, but I'm a bit concerned because most of the foliage on the privet is beginning to yellow and some is already falling. In most years privet foliage turns purplish and stays through out much of the fall and into winter. Anyway I was able to use a solution of 4% Rodeo to foliar treat most of the privet along Horse Creek (along the power line right-of-way), near the drive way and north to the northern most tip of the property).

30

Edit Journal Entry

Send a Guest Pass

Apsley Woods - Wednesday, October 2, 2013



Stiltgrass oh my!

On Sunday when I was out maintaining trails, I noticed a small patch of Japanese stiltgrass in a bottomland area near an intermittent stream. I decided to explore a bit and try to determine the origin. To my surprise I found a large patch that recently established in the drainage channel of the stream. It appears that the seed washed in and was deposited on both sides of the channel. Bummer!!! Since some of the stiltgrass appeared not to be mature, I decided to treat with Glyphosate. I used Rodeo which is safe for aquatic use and treated the infestation. I ended up spraying 2-3 gallon Solo Sprayers with 3% Rodeo and 2 oz. of blue dye to mark the treated area. A little later than I would like, but hopefully it will reduce the seed and the amount of follow-up for next year.

This experience helped me to...

Protect it

Make it healthy

31

Summary

- My Land Plan is relatively easy software to use
- It has some limitations, but the price is right!
- The more you use it the easier it becomes
- Don't be afraid to jump in with both feet!

CFAES

32

<http://mylandplan.org>

CFAES

33

Thanks!

David Apsley

740-710-3009

apsley.1@osu.edu

<http://go.osu.edu/seohiowoods>

 **THE OHIO STATE UNIVERSITY**
COLLEGE OF FOOD, AGRICULTURAL,
AND ENVIRONMENTAL SCIENCES

34