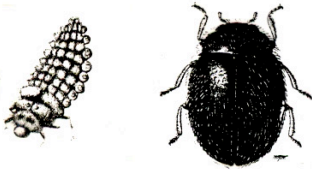
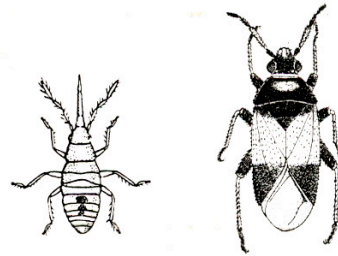


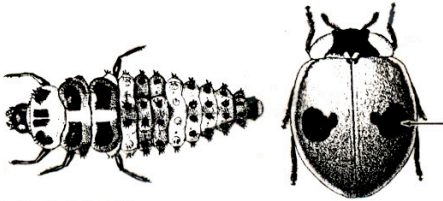
Natural Enemies of Pests in Ohio Orchards



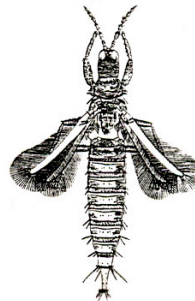
a black lady beetle, *Stethorus punctum*
(larva on left, adult on right)



the insidious flower bug, *Orius insidiosus*
(nymph on left, adult on right)



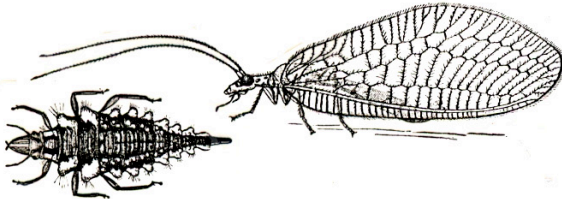
a lady beetle
(larva on left, adult on right)



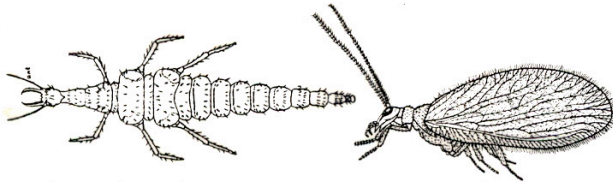
the black hunter thrips, *Leptothrips mali*
(adult)



a damsel bug
(adult)



a green lacewing
(larva on left, adult on right)



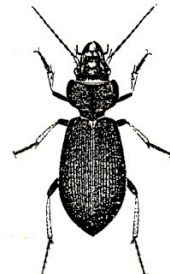
a brown lacewing
(larva on left, adult on right)



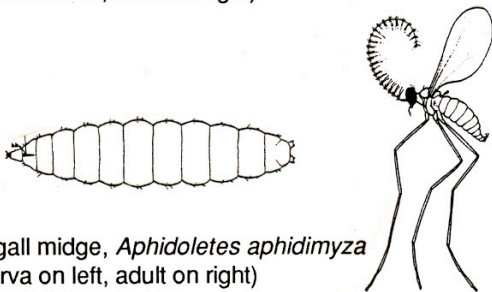
soldier beetle
(adult)



rove beetle
(adult)



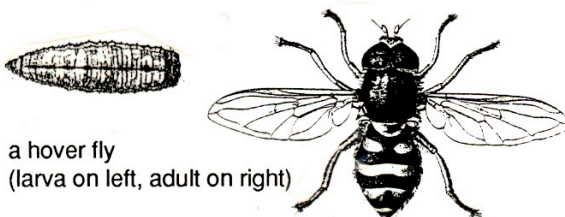
ground beetle
(adult)



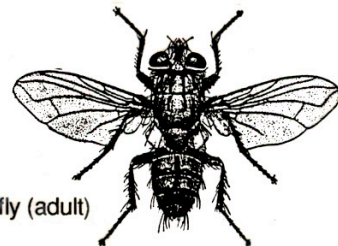
a gall midge, *Aphidoletes aphidimyza*
(larva on left, adult on right)



a parasitic wasp
(adult [on right] laying egg in aphid [on left])



a hover fly
(larva on left, adult on right)



a parasitic fly (adult)