

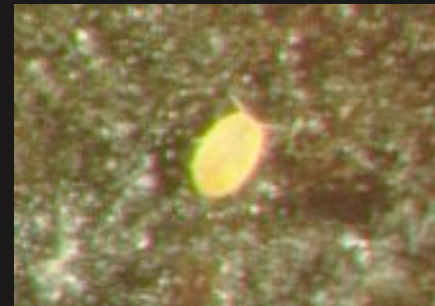
San José Scale Management

Celeste Welty
Extension Entomologist
Ohio State University

2004; revised 2008

San José Scale

- Sucking pest
- Injures fruit & bark
- Overwinters on bark
- Disperses to fruit in crawler stage (starts mid-June)



San José Scale

Management

- Use oil in late winter or early spring to smother the overwintering population on bark

OR

- Use insecticide

San José Scale



Oil spray:

- **Best control of scale if applied before buds swell**
- **Prevent damage to tree by applying when temperature above freezing within a day of application**
- **Apply dilute (2 gal oil in 100 gal water; spray to run-off), cover all bark**

San José Scale

Insecticide spray options:

- **Delayed dormant (pre-bloom)**
- **Post-bloom**

San José Scale

Insecticide spray options:

- **Delayed dormant (pre-bloom)**
 - Esteem
 - Lorsban 4E
 - Supracide
 - Diazinon
- **Post-bloom**

San José Scale

Insecticide spray options:

- **Delayed dormant (pre-bloom)**
- **Post-bloom**
 - Esteem
 - Diazinon 50WP
 - Provado
 - Assail
 - Centaur
 - Baythroid

San José Scale

Esteem 35WP:

- **Very effective, but expensive**
- **Best use:**
 - **Apply** before bloom
- **2nd best use:**
 - **Direct** at crawlers (mid-June)

San José Scale

Esteem 35WP:

- **Best use:**
 - Apply before bloom
 - Use low rate (4 oz/A)
 - If applied at 1/2"-green, also controls rosy apple aphid
 - If applied at pink, also controls leafminer
 - At 1/2" green, it works better when applied with oil, but it can be applied alone

San José Scale

Esteem 35WP:

- **2nd best use:**
 - Direct at crawlers (mid-June)
 - Use high rate (5 oz/A)

San José Scale

- Other options during delayed-dormant period:
apply oil + organo-phosphate:
 - Lorsban 4E
 - Supracide 25WP
 - Supracide 2E
 - Diazinon
- Control mostly from the oil,
not the OP

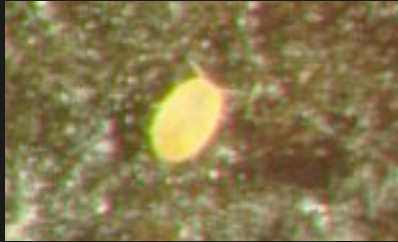
San José Scale

- **Post-bloom control options**
 - **Diazinon**
 - **Direct at crawlers (mid-June)**
 - **Provado**
 - **Direct at crawlers (mid-June)**

Review: Diazinon status on tree fruit

- **Diazinon 50WP**
 - Allowed on apple & pear; 21-d PHI
 - Allowed on peach; 21-d PHI
- **Diazinon AG500 (4EC)**
 - Not allowed on apple & pear
 - Allowed on peach; 21-d PHI
- **Diazinon AG600 WBC**
 - Allowed on apple & pear but not after petal-fall
 - Allowed on peach; 21-d PHI

San José Scale



When are crawlers crawling?

- **Start about 4-6 weeks after bloom**
- **Emergence lasts several weeks**
- **Monitoring methods:**
 - **Predict using trap & temperature**
 - **Detect with black sticky tape**

San José Scale



adult

When are crawlers crawling?

- Use pheromone trap
 - Set up trap at pink bud stage
 - First adults usually caught at bloom
- Track temperature
 - Crawlers expected 300-350 DD degree-days (base 50°F) after catch of adults in trap

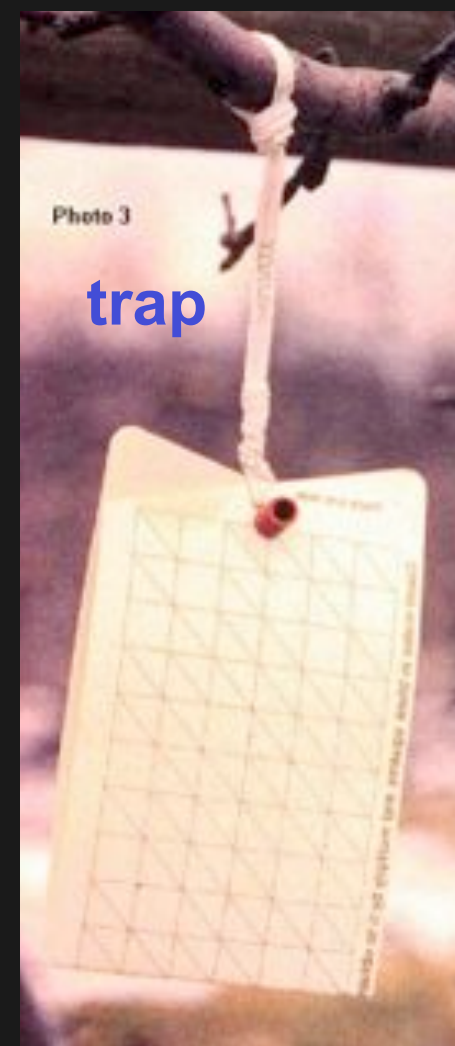


Photo 3

trap

San José Scale



When are crawlers crawling?

- **Use black sticky tape (electrical tape)**
 - **Wrap sticky-side out around branch**
 - **Look for tiny bright yellow crawlers**