

Scouting Insects in Sweet Corn



Celeste Welty
Extension Entomologist
Ohio State University

Emerging-Tassel Stage

- Small holes, tidy = European corn borer
- Big holes, messy = fall armyworm



Emerging-Tassel Stage

- **Scout (examine plants)**
 - 50 plants in small plantings (<2 acres)
 - 100 plants in large plantings (>2 acres)
 - Record # with fresh feeding damage
- **Action threshold**
 - Spray if fall armyworm and/or European corn borer on >10% of plants



Green tassel stage

Corn leaf aphid

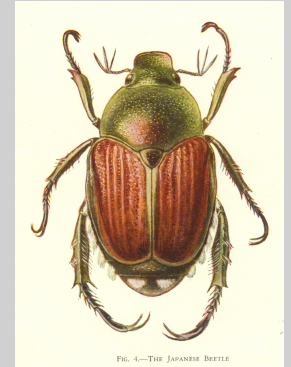
- Threshold: >50% of stand with >>50 aphids per plant, and natural enemies not abundant



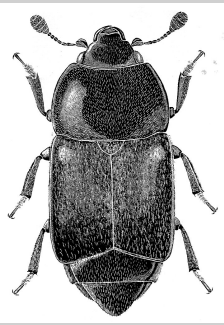
Silk-Clipping Beetles



- **Several species:**
 - **Japanese beetle**
 - **corn rootworm beetles**
 - **western**
 - **southern**
 - **northern**



- **Treat once, early-silk, if:**
 - **>2 Jap. beetles per ear or**
 - **>5 rootwm beetles per ear**



Sap Beetles

- **Scout (examine ears)**
 - 50 ears in small plantings (<2 A)
 - 100 ears in large plantings (>2 A)
 - Record # infested with adult or larval sap beetles
- **Action threshold**
 - Treat every 4-5 days during silking if sap beetles in >10% of ears



The end