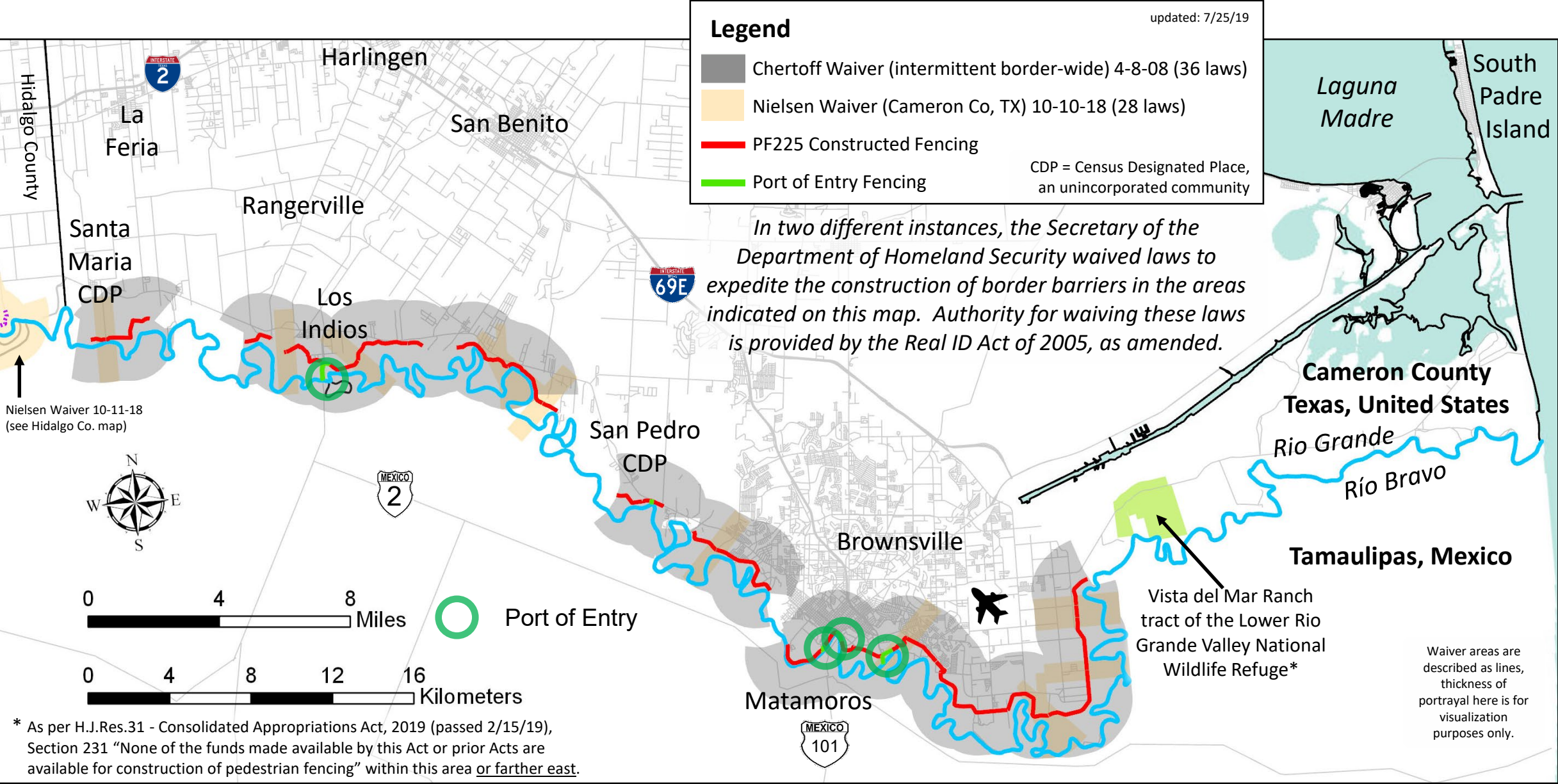


# Department of Homeland Security Waivers and Border Barriers \* Cameron County, TX

Kenneth D. Madsen  
Associate Professor of Geography  
<http://u.osu.edu/madsen.34/maps/>







Santa  
Maria  
CDP

Iglesia  
Antigua  
CDP

Bluetown  
CDP

Los Indios

white outlined areas  
are part of the  
**Lower Rio Grande  
Valley National  
Wildlife Refuge**

black outlined areas are  
part of the **Las Palomas  
Wildlife Management  
Unit (Texas Parks &  
Wildlife)**

**Department of Homeland Security Waivers  
and Border Barriers \* Cameron County, TX**

Kenneth D. Madsen  
<http://u.osu.edu/madsen.34/maps/>



**THE OHIO STATE UNIVERSITY**  
NEWARK

updated: 7/25/19

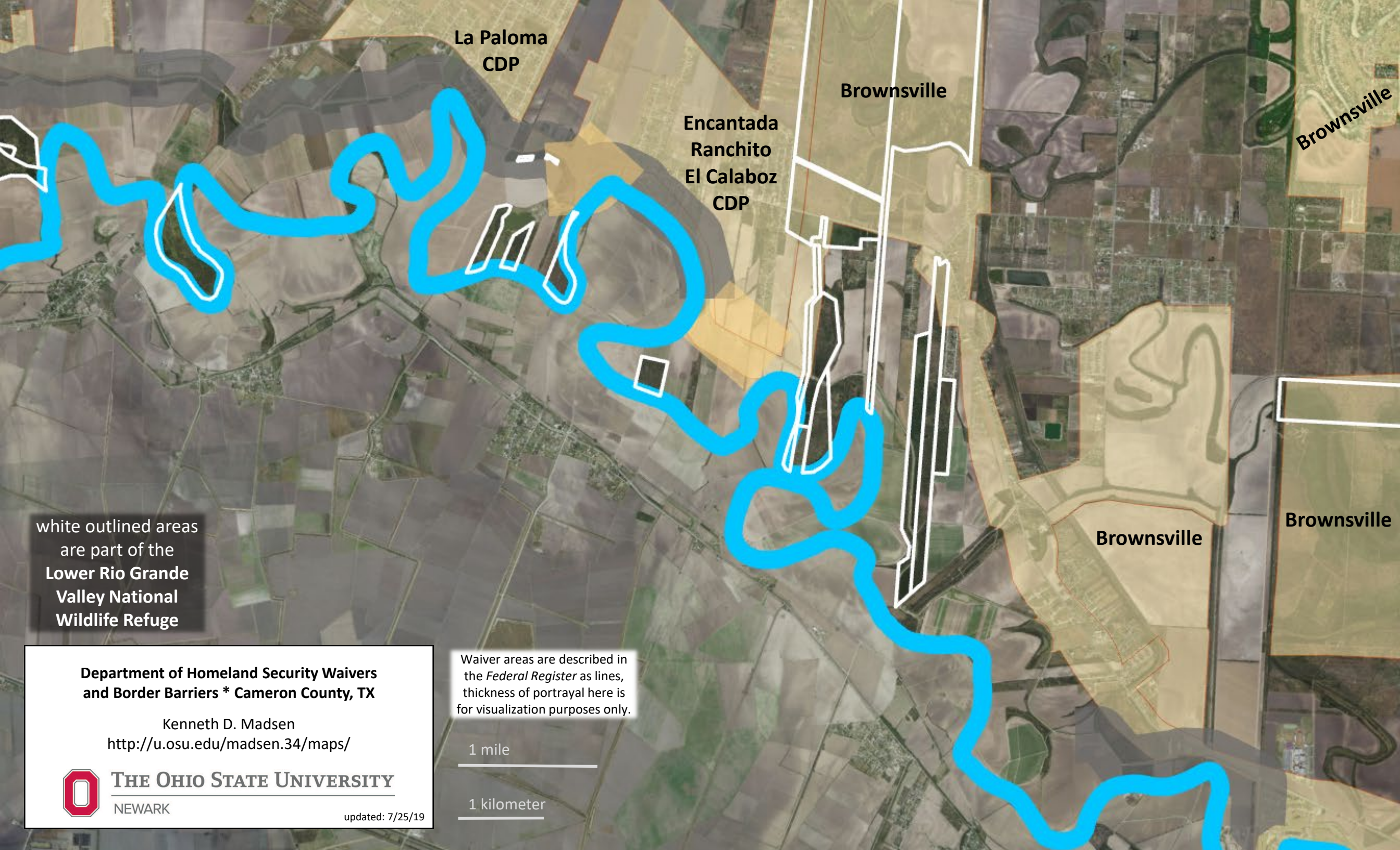
Waiver areas are described in  
the *Federal Register* as lines,  
thickness of portrayal here is  
for visualization purposes only.

1 mile

1 kilometer

[note overlap areas  
from one detailed  
map to the next]





La Paloma  
CDP

Brownsville

Encantada  
Ranchito  
El Calaboz  
CDP

Brownsville

Brownsville

Brownsville

white outlined areas  
are part of the  
**Lower Rio Grande  
Valley National  
Wildlife Refuge**

**Department of Homeland Security Waivers  
and Border Barriers \* Cameron County, TX**

Kenneth D. Madsen  
<http://u.osu.edu/madsen.34/maps/>



**THE OHIO STATE UNIVERSITY**  
NEWARK

updated: 7/25/19

Waiver areas are described in  
the *Federal Register* as lines,  
thickness of portrayal here is  
for visualization purposes only.

1 mile

1 kilometer





Brownsville

white outlined areas  
are part of the  
**Lower Rio Grande  
Valley National  
Wildlife Refuge**

black outlined areas are  
part of the **Las Palomas  
Wildlife Management  
Unit (Texas Parks &  
Wildlife)**

**Department of Homeland Security Waivers  
and Border Barriers \* Cameron County, TX**

Kenneth D. Madsen  
<http://u.osu.edu/madsen.34/maps/>



**THE OHIO STATE UNIVERSITY**  
NEWARK

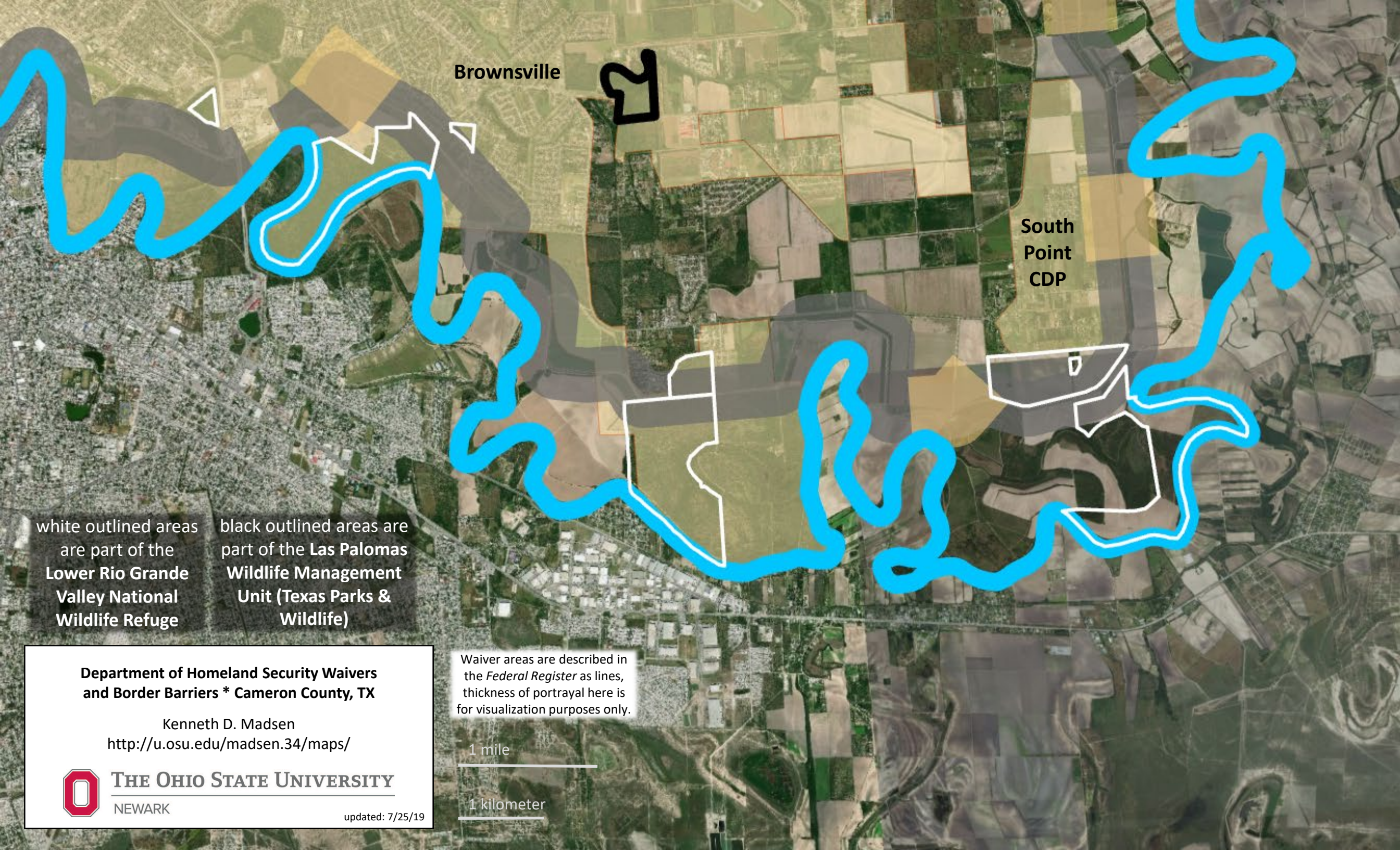
updated: 7/25/19

Waiver areas are described in  
the *Federal Register* as lines,  
thickness of portrayal here is  
for visualization purposes only.

1 mile

1 kilometer





Brownsville

South  
Point  
CDP

white outlined areas  
are part of the  
**Lower Rio Grande  
Valley National  
Wildlife Refuge**

black outlined areas are  
part of the **Las Palomas  
Wildlife Management  
Unit (Texas Parks &  
Wildlife)**

**Department of Homeland Security Waivers  
and Border Barriers \* Cameron County, TX**

Kenneth D. Madsen  
<http://u.osu.edu/madsen.34/maps/>



**THE OHIO STATE UNIVERSITY**  
NEWARK

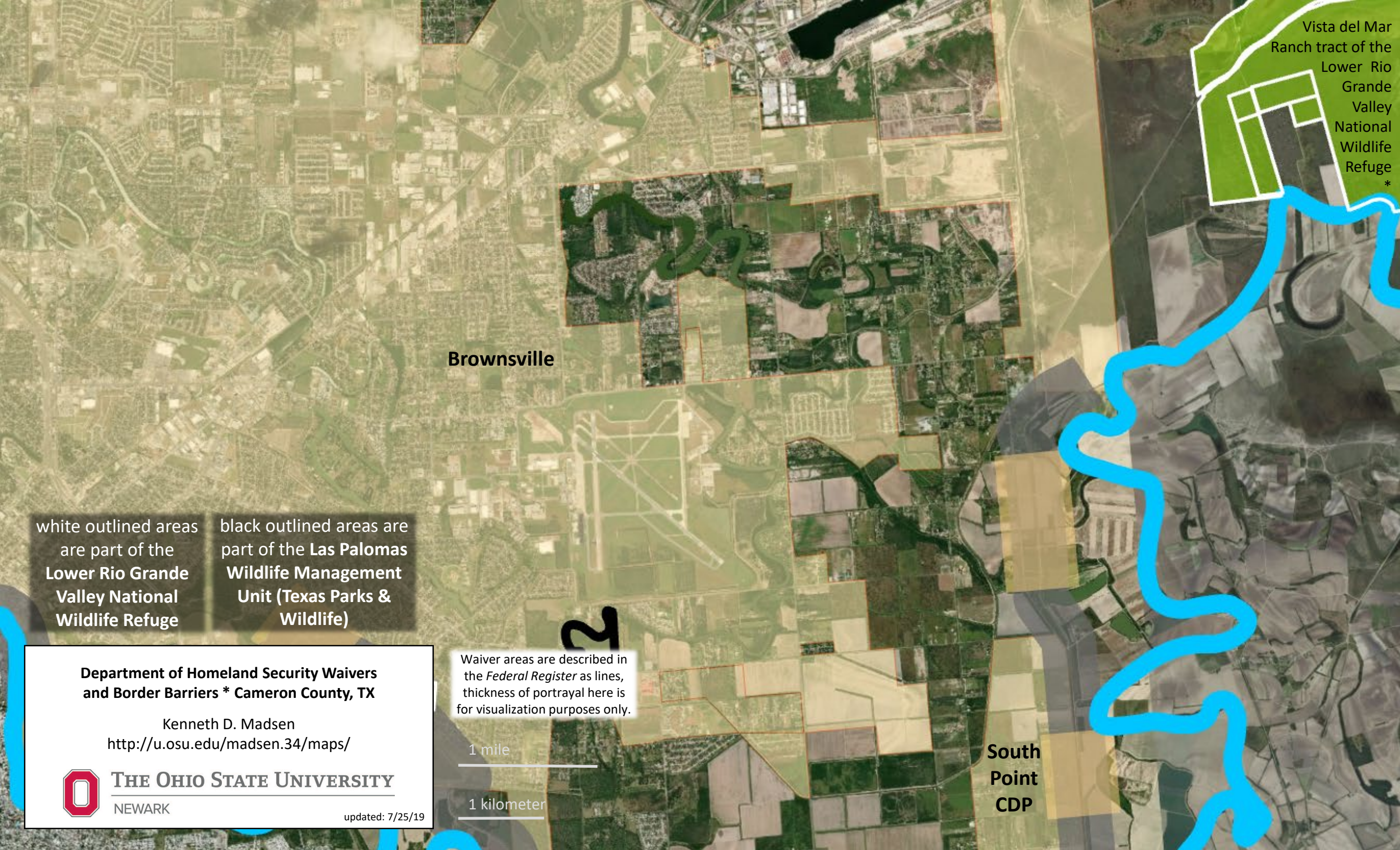
updated: 7/25/19

Waiver areas are described in  
the *Federal Register* as lines,  
thickness of portrayal here is  
for visualization purposes only.

1 mile

1 kilometer





Vista del Mar  
Ranch tract of the  
Lower Rio  
Grande  
Valley  
National  
Wildlife  
Refuge  
\*

Brownsville

white outlined areas  
are part of the  
**Lower Rio Grande  
Valley National  
Wildlife Refuge**

black outlined areas are  
part of the **Las Palomas  
Wildlife Management  
Unit (Texas Parks &  
Wildlife)**

**Department of Homeland Security Waivers  
and Border Barriers \* Cameron County, TX**

Kenneth D. Madsen  
<http://u.osu.edu/madsen.34/maps/>



**THE OHIO STATE UNIVERSITY**  
NEWARK

updated: 7/25/19

Waiver areas are described in  
the *Federal Register* as lines,  
thickness of portrayal here is  
for visualization purposes only.

1 mile

1 kilometer

South  
Point  
CDP




Chertoff 4/8/08 (Intermittent)	Nielsen 10/10/18 (Cameron Co., TX)
{1} The National Environmental Policy Act (Pub. L. 91-190, 83 Stat. 852 (Jan. 1, 1970) (42 U.S.C. 4321 <i>et seq.</i> ))	{1} The National Environmental Policy Act (Pub. L. 91–190, 83 Stat. 852 (Jan. 1, 1970) (42 U.S.C. 4321 <i>et seq.</i> ))
{2} the Endangered Species Act (Pub. L. 93-205, 87 Stat. 884 (Dec. 28, 1973) (16 U.S.C. 1531 <i>et seq.</i> ))	{2} the Endangered Species Act (Pub. L. 93–205, 87 Stat. 884 (Dec. 28, 1973) (16 U.S.C. 1531 <i>et seq.</i> ))
{3} the Federal Water Pollution Control Act (commonly referred to as the Clean Water Act) (33 U.S.C. 1251 <i>et seq.</i> ))	{3} the Federal Water Pollution Control Act (commonly referred to as the Clean Water Act (33 U.S.C. 1251 <i>et seq.</i> ))
{4} the National Historic Preservation Act (Pub. L. 89-665, 80 Stat. 915 (Oct. 15, 1966) (16 U.S.C. 470 <i>et seq.</i> ))	{4} the National Historic Preservation Act (Pub. L. 89–665, 80 Stat. 915 (Oct. 15, 1966), as amended, repealed, or replaced by Pub. L. 113–287 (Dec. 19, 2014) (formerly codified at 16 U.S.C. 470 <i>et seq.</i> , now codified at 54 U.S.C. 100101 note and 54 U.S.C. 300101 <i>et seq.</i> ))
{5} the Migratory Bird Treaty Act (16 U.S.C. 703 <i>et seq.</i> )	{5} the Migratory Bird Treaty Act (16 U.S.C. 703 <i>et seq.</i> )
	{6} the Migratory Bird Conservation Act (16 U.S.C. 715 <i>et seq.</i> )
{6} the Clean Air Act (42 U.S.C. 7401 <i>et seq.</i> )	{7} the Clean Air Act (42 U.S.C. 7401 <i>et seq.</i> )
{7} the Archeological Resources Protection Act (Pub. L. 96-95, 16 U.S.C. 470aa <i>et seq.</i> )	{8} the Archeological Resources Protection Act (Pub. L. 96–95 (16 U.S.C. 470aa <i>et seq.</i> ))
	{9} the Paleontological Resources Preservation Act (16 U.S.C. 470aaa <i>et seq.</i> )
	{10} the Federal Cave Resources Protection Act of 1988 (16 U.S.C. 4301 <i>et seq.</i> )
{8} the Safe Drinking Water Act (42 U.S.C. 300f <i>et seq.</i> )	{11} the Safe Drinking Water Act (42 U.S.C. 300f <i>et seq.</i> )
{9} the Noise Control Act (42 U.S.C. 4901 <i>et seq.</i> )	{12} the Noise Control Act (42 U.S.C. 4901 <i>et seq.</i> )
{10} the Solid Waste Disposal Act, as amended by the Resource Conservation and Recovery Act (42 U.S.C. 6901 <i>et seq.</i> )	{13} the Solid Waste Disposal Act, as amended by the Resource Conservation and Recovery Act (42 U.S.C. 6901 <i>et seq.</i> )
{11} the Comprehensive Environmental Response, Compensation, and Liability Act (42 U.S.C. 9601 <i>et seq.</i> )	{14} the Comprehensive Environmental Response, Compensation, and Liability Act (42 U.S.C. 9601 <i>et seq.</i> )
{12} the Archaeological and Historic Preservation Act (Pub. L. 86-523, 16 U.S.C. 469 <i>et seq.</i> )	{15} the Archaeological and Historic Preservation Act (Pub. L. 86–523, as amended, repealed, or replaced by Pub. L. 113–287 (Dec. 19, 2014) (formerly codified at 16 U.S.C. 469 <i>et seq.</i> , now codified at 54 U.S.C. 312502 <i>et seq.</i> ))
{13} the Antiquities Act (16 U.S.C. 431 <i>et seq.</i> )	{16} the Antiquities Act (formerly codified at 16 U.S.C. 431 <i>et seq.</i> , now codified 54 U.S.C. 320301 <i>et seq.</i> )
{14} the Historic Sites, Buildings, and Antiquities Act (16 U.S.C. 461 <i>et seq.</i> )	{17} the Historic Sites, Buildings, and Antiquities Act (formerly codified at 16 U.S.C. 461 <i>et seq.</i> , now codified at 54 U.S.C. 3201–320303 & 320101–320106)
{15} the Wild and Scenic Rivers Act (Pub. L. 90-542, 16 U.S.C. 1281 <i>et seq.</i> )	
{16} the Farmland Protection Policy Act (7 U.S.C. 4201 <i>et seq.</i> )	{18} the Farmland Protection Policy Act (7 U.S.C. 4201 <i>et seq.</i> )
{17} the Coastal Zone Management Act (Pub. L. 92-583, 16 U.S.C. 1451 <i>et seq.</i> )	{19} the Coastal Zone Management Act (Pub. L. 92–583 (16 U.S.C. 1451, <i>et seq.</i> ))

Department of Homeland Security Waivers  
and Border Barriers \* Cameron County, TX

Kenneth D. Madsen

<http://u.osu.edu/madsen.34/maps/>

THE OHIO STATE UNIVERSITY  
NEWARK

updated: 7/25/19

(waiver listing continued on next page)

{18} the Wilderness Act (Pub. L. 88-577, 16 U.S.C. 1131 <i>et seq.</i> )	
{19} the Federal Land Policy and Management Act (Pub L. 94- 579, 43 U.S.C. 1701 <i>et seq.</i> )	{20} the Federal Land Policy and Management Act (Pub. L. 94–579 (43 U.S.C. 1701 <i>et seq.</i> ))
{20} the National Wildlife Refuge System Administration Act (Pub. L. 89-669, 16 U.S.C. 668dd-668ee)	{21} the National Wildlife Refuge System Administration Act (Pub. L. 89–669, 16 U.S.C. 668dd–668ee)
{21} the Fish and Wildlife Act of 1956 (Pub. L. 84-1024, 16 U.S.C. 742a, <i>et seq.</i> )	{22} National Fish and Wildlife Act of 1956 (Pub. L. 84–1024 (16 U.S.C. 742a, <i>et seq.</i> ))
{22} the Fish and Wildlife Coordination Act (Pub. L. 73- 121, 16 U.S.C. 661 <i>et seq.</i> )	{23} the Fish and Wildlife Coordination Act (Pub. L. 73–121 (16 U.S.C. 661 <i>et seq.</i> ))
{23} the Administrative Procedure Act (5 U.S.C. 551 <i>et seq.</i> )	{24} the Administrative Procedure Act (5 U.S.C. 551 <i>et seq.</i> )
{24} the Otay Mountain Wilderness Act of 1999 (Pub. L. 106-145)	
{25} Sections 102(29) and 103 of Title I of the California Desert Protection Act (Pub. L. 103-433), 50 Stat. 1827	
{26} the National Park Service Organic Act (Pub. L. 64-235, 16 U.S.C. 1, 2-4)	
{27} the National Park Service General Authorities Act (Pub. L. 91-383, 16 U.S.C. 1a-1 <i>et seq.</i> )	
{28} Sections 401(7), 403, and 404 of the National Parks and Recreation Act of 1978 (Pub. L. 95-625)	
{29} Sections 301(a)-(f) of the Arizona Desert Wilderness Act (Pub. L. 101-628)	
{30} the Rivers and Harbors Act of 1899 (33 U.S.C. 403)	{25} the River and Harbors Act of 1899 (33 U.S.C. 403))
{31} the Eagle Protection Act (16 U.S.C. 668 <i>et seq.</i> )	{26} the Eagle Protection Act (16 U.S.C. 668 <i>et seq.</i> )
{32} the Native American Graves Protection and Repatriation Act (25 U.S.C. 3001 <i>et seq.</i> )	{27} the Native American Graves Protection and Repatriation Act (25 U.S.C. 3001 <i>et seq.</i> )
{33} the American Indian Religious Freedom Act (42 U.S.C. 1996)	{28} the American Indian Religious Freedom Act (42 U.S.C. 1996)
{34} the Religious Freedom Restoration Act (42 U.S.C. 2000bb)	
{35} the National Forest Management Act of 1976 (16 U.S.C. 1600 <i>et seq.</i> )	
{36} and the Multiple Use and Sustained Yield Act of 1960 (16 U.S.C. 528-531)	

Summary Statistics for Cameron County, Texas:

river border = 117.6 miles  
total length of DHS waiver coverage = 37.0 miles  
total length of DHS waivers, including duplicates = 42.7 miles  
border covered by DHS waivers = approx. 71.0 miles or 60.4%  
(measured by shortest line from  
end of each waiver to river bank)  
total length of PF225 barriers = 34.4 miles  
total length of POE barriers = 3.1 miles

**Department of Homeland Security Waivers  
and Border Barriers \* Cameron County, TX**

Kenneth D. Madsen

<http://u.osu.edu/madsen.34/maps/>



**THE OHIO STATE UNIVERSITY**  
NEWARK

updated: 7/25/19

Disclaimer: The maps and data here were prepared with great care and a focus on accurate representation. Nonetheless, they are meant for academic research and general reference rather than definitive legal purposes. Factors that impact the final layout and accuracy include (for example): base map, data layers, judgement calls and interpretations when conflicts or unclear data was encountered, rounding, level of source detail, and map projection. Map projection used for these maps was adapted from USA Contiguous Equidistant Conic with a focus on the border region and a central meridian of 107° 08' W.

Data Acknowledgements: ESRI, Google Maps/Earth, MapQuest, International Boundary and Water Commission, U.S. Department of Homeland Security, Texas Parks & Wildlife, Texas Natural Resources Information System, University of Arizona Spatial Data Explorer, DataBasin, *Federal Register*, Sierra Club Borderlands, Defenders of Wildlife, Texas Civil Rights Project, Denise L. Gilllman, Dan Millis, Scott Nicol, Bryan Bird, Matt Clark. My apologies for any inadvertent omissions.



Hope Park; Brownsville, 2009.  
PF225 fencing. This area is  
covered by the Chertoff  
4/8/08 intermittent  
waiver.

Sabal Palm Sanctuary; Brownsville, 2016.  
PF225 fencing. This area is covered  
by the Chertoff 4/8/08  
intermittent waiver.

**Department of Homeland Security Waivers  
and Border Barriers \* Cameron County, TX**

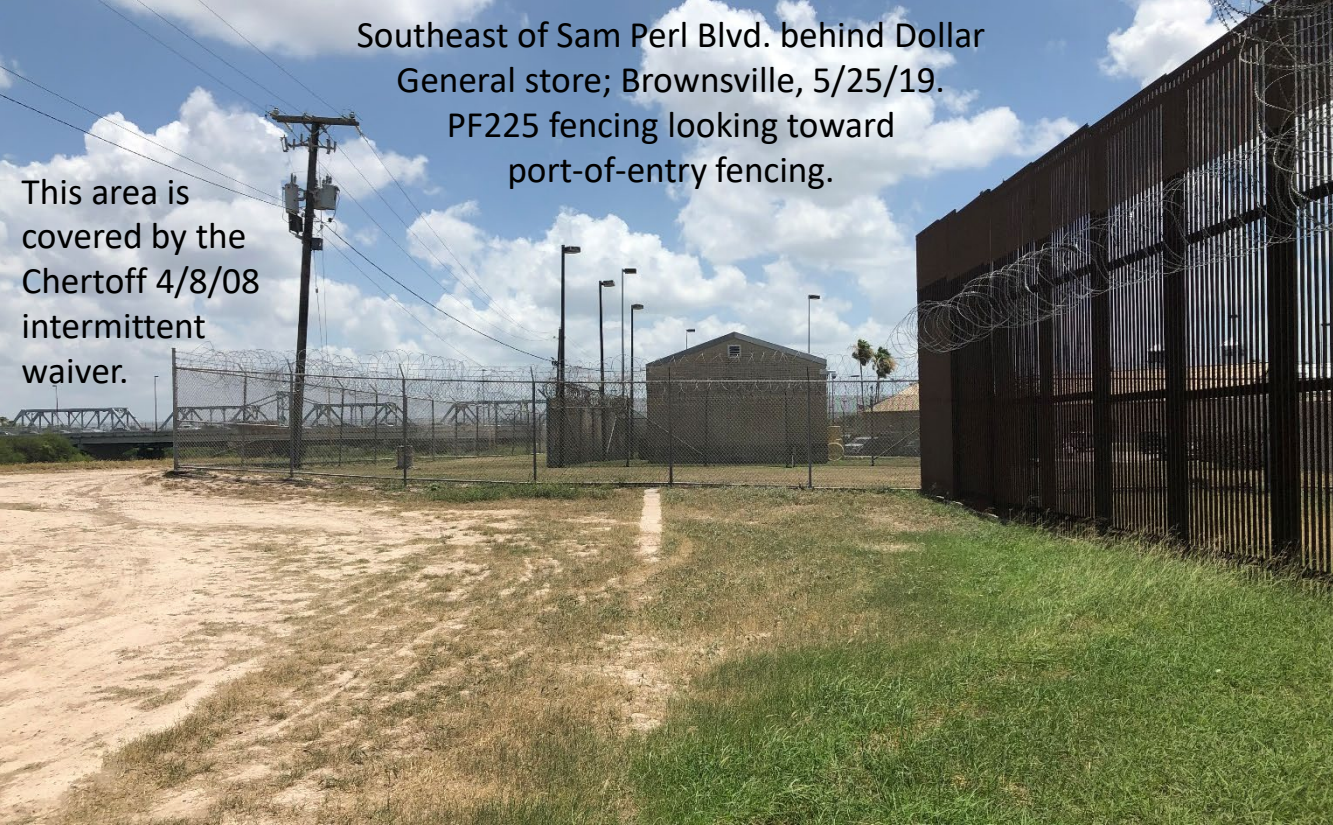
Photographs courtesy of Scott Nicol.

updated: 7/25/19



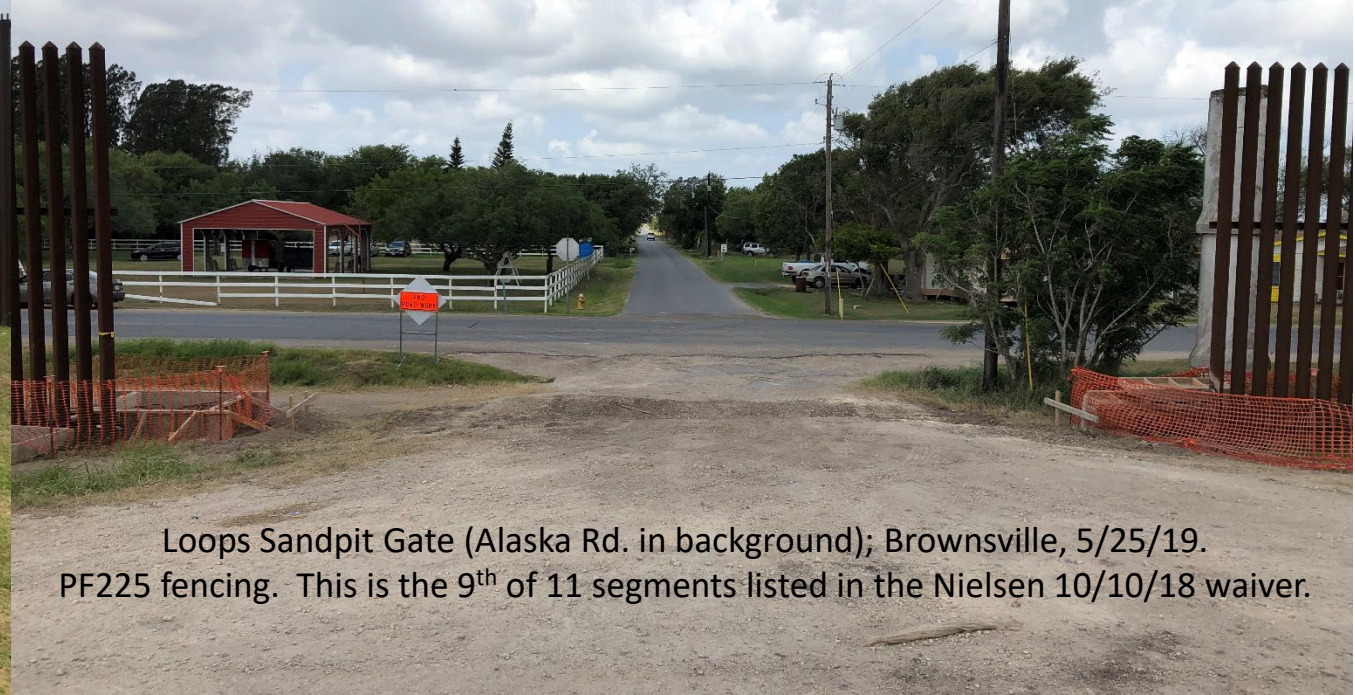
Southeast of Sam Perl Blvd. behind Dollar  
General store; Brownsville, 5/25/19.  
PF225 fencing looking toward  
port-of-entry fencing.

This area is  
covered by the  
Chertoff 4/8/08  
intermittent  
waiver.



Impala Road Gate; Brownsville, 5/25/19.  
PF225 fencing. This is the 7<sup>th</sup> of 11 segments listed in the Nielsen 10/10/18 waiver.

Lincoln Park; Brownsville, 5/25/19.  
PF225 fencing. This area is covered by the Chertoff 4/8/08 intermittent waiver.



Loops Sandpit Gate (Alaska Rd. in background); Brownsville, 5/25/19.  
PF225 fencing. This is the 9<sup>th</sup> of 11 segments listed in the Nielsen 10/10/18 waiver.

Department of Homeland Security Waivers  
and Border Barriers \* Cameron County, TX

Kenneth D. Madsen

<http://u.osu.edu/madsen.34/maps/>



THE OHIO STATE UNIVERSITY  
NEWARK

updated: 7/25/19