

If you are walking:

Approach the front doors of the Psychology Building.

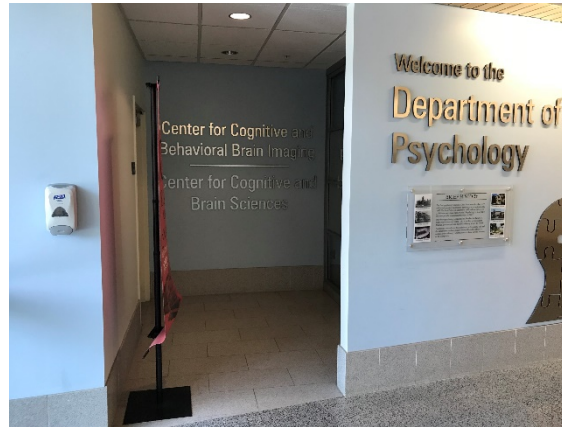


Enter the front doors of the Psychology Building.



u.osu.edu/ohiostudyfmri

Walk in the doors and go to Room 24A immediately to your LEFT (picture below). If you reach the lobby, you have gone too far!



Remember to bring the contact info for your primary care physician and the smartphone we gave you (see Checklist)

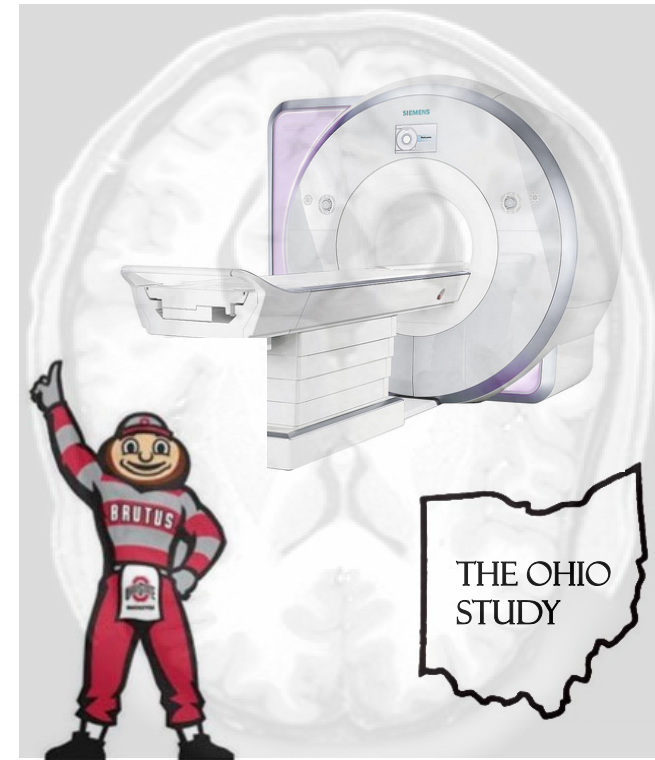
If you need help with directions the day of your session, contact:

☎ (614) 688-4912

✉ ohio.study.osu@gmail.com

u.osu.edu/ohiostudyfmri

*Directions to
your fMRI
session at Ohio
State*



Thank you for your participation!

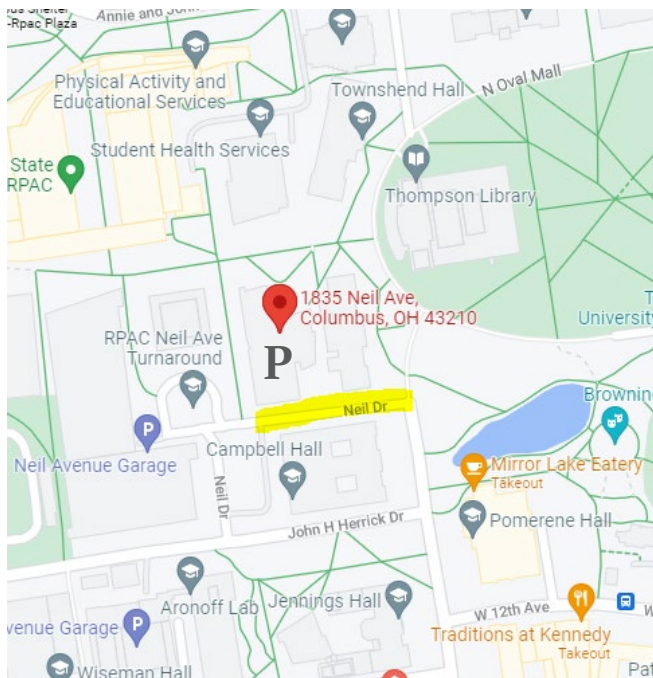
u.osu.edu/ohiostudyfmri

If you are driving:

We will reserve a free parking spot on Neil Drive next to the scanning center.

The address to enter into the GPS on the phone we gave you is: **1835 Neil Avenue, Columbus OH 43210**

The map below shows the street with the parking spot, highlighted in yellow. The Psychology Building is labeled with a "P".



u.osu.edu/ohiostudyfmri

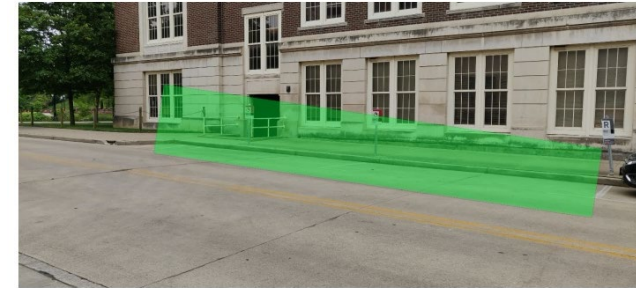
Below is a map of where the parking spots are located on Neil Drive next to the Psychology Building.



This should be what Neil Drive looks like. The parking spots will be on the right side.



Park in either of the first two spots.



The two spots should have this sign that says "CCBBI Visitor Parking Only".



Our research staff will meet you at the parking spot to give you a parking pass and direct you into the building.

u.osu.edu/ohiostudyfmri