

Epitaxial co-deposition growth of CaGe₂ films by molecular beam epitaxy for large area germanane

Igor V. Pinchuk

Department of Physics, The Ohio State University, Columbus, Ohio 43210; and Department of Physics and Astronomy, University of California, Riverside, California 92521

Patrick M. Odenthal

Department of Physics and Astronomy, University of California, Riverside, California 92521

Adam S. Ahmed

Department of Physics, The Ohio State University, Columbus, Ohio 43210

Walid Amamou

Department of Physics and Astronomy, University of California, Riverside, California 92521

Joshua E. Goldberger^{a)}

Department of Chemistry, The Ohio State University, Columbus, Ohio 43210

Roland K. Kawakami^{b)}

Department of Physics, The Ohio State University, Columbus, Ohio 43210; and Department of Physics and Astronomy, University of California, Riverside, California 92521

(Received 17 September 2013; accepted 30 December 2013)

Two-dimensional crystals are an important class of materials for novel physics, chemistry, and engineering. Germanane (GeH), the germanium-based analogue of graphane (CH), is of particular interest due to its direct band gap and spin–orbit coupling. Here, we report the successful co-deposition growth of CaGe₂ films on Ge(111) substrates by molecular beam epitaxy and their subsequent conversion to germanane by immersion in hydrochloric acid. We find that the growth of CaGe₂ occurs within an adsorption-limited growth regime, which ensures stoichiometry of the film. We utilize in situ reflection high energy electron diffraction (RHEED) to explore the growth temperature window and find the best RHEED patterns at 750 °C. Finally, the CaGe₂ films are immersed in hydrochloric acid to convert the films to germanane. Auger electron spectroscopy of the resulting film indicates the removal of Ca, and RHEED patterns indicate a single-crystal film with an in-plane orientation dictated by the underlying Ge(111) substrate. X-ray diffraction and Raman spectroscopy indicate that the resulting films are indeed germanane. Ex situ atomic force microscopy shows that the grain size of the germanane is on the order of a few micrometers, being primarily limited by terraces induced by the miscut of the Ge substrate. Thus, optimization of the substrate could lead to the long-term goal of large area germanane films.

I. INTRODUCTION

The discovery and mechanical exfoliation of single layer graphene has led to a revolution in nanoscale materials science by enabling a plethora of new physics and chemistry in two dimensions (2D) that is not possible in conventional three-dimensional materials.^{1–3} Beyond graphene, there is great interest in exploring 2D materials that offer properties not found in graphene, such as a native band gap, strong spin–orbit coupling, and strong exciton confinement.⁴ Of particular interest is germanane (GeH),

the germanium-based analogue of graphane (CH), which has recently been synthesized as a bulk single-crystal and exfoliated onto insulating substrates.⁵ This was achieved by first synthesizing bulk crystals of layered Zintl-phase CaGe₂, then submerging the crystals in hydrochloric acid (HCl) to de-intercalate the Ca atoms (Fig. 1). This results in stacked layers of 2D germanane sheets, where each sheet consists of Ge atoms arranged in a buckled honeycomb lattice and *sp*³-hybridized due to covalent bonds to hydrogen as shown in Fig. 1(a).

Germanane has several properties that make it extremely attractive for science and engineering. First, it has a direct band gap of ~1.5 eV and is theoretically capable of high mobility transport (~18,000 cm²/Vs), which make it favorable for optoelectronics and nanoscale digital electronics.⁵ Second, it is thermodynamically stable at room temperature and is resistant to oxidation, which is advantageous for exploratory physics studies as well as future

^{a)}This author was an editor of this focus issue during the review and decision stage. For the *JMR* policy on review and publication of manuscripts authored by editors, please refer to http://www.mrs.org_jmr_policy.

^{b)}Address all correspondence to this author.

e-mail: kawakami.15@osu.edu

DOI: 10.1557/jmr.2014.2

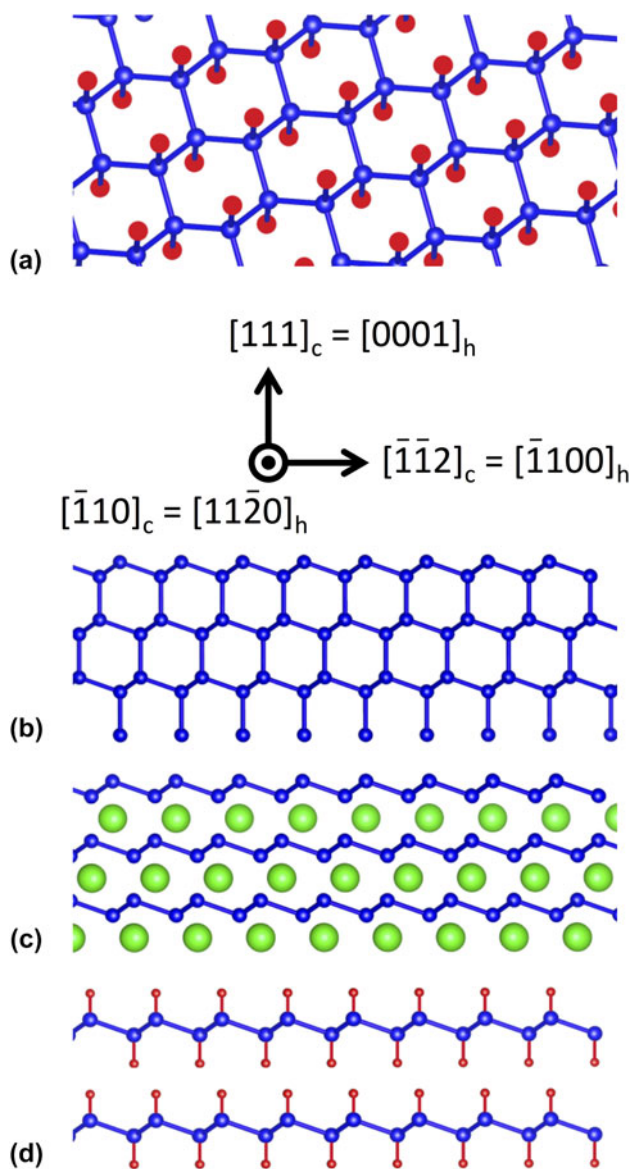


FIG. 1. (a) Atomic structure diagram of germanane (GeH). (b) Projected view of the bulk germanium lattice. The axis indicates the directions within the cubic lattice and in the corresponding hexagonal lattice (for CaGe₂ and germanane). (c) Projected view of CaGe₂ films. (d) Projected view of stacked germanane layers.

device applications. Finally, the larger spin–orbit coupling associated with heavier element Ge (as compared to C in graphene) opens up new opportunities to explore spintronics in 2D such as manipulation of spin by internal spin–orbit fields, spin Hall effect, and quantum spin Hall effect.^{6–8}

An important challenge is the growth of large area, single-crystalline germanane films. The most successful effort to date has been the synthesis of CaGe₂ films by depositing Ca films on Ge(111) and then performing an in situ postannealing.^{9,10} The CaGe₂ films were then converted to germanane via HCl de-intercalation as described above.^{5,11} While this provides an important baseline, a much stronger approach would be to perform molecular beam epitaxy

(MBE) growth of CaGe₂ films by co-depositing Ca and Ge atoms. This would provide much greater control over the film thickness than the postannealing method and may lead to higher quality films. Further, the MBE co-deposition approach could lead to vertically-stacked heterostructures of germanane, silicane (SiH), and their alloys through the growth of CaGe₂–CaSi₂ heterostructures and subsequent HCl de-intercalation. However, to our knowledge, the co-deposition growth of CaGe₂ or CaSi₂ has not yet been demonstrated.

In this paper, we report the successful co-deposition growth of CaGe₂ films on Ge(111) substrates by MBE. We find that the surface structure of co-deposited CaGe₂ films is better than films prepared by postannealing, based on a comparison of in situ reflection high energy electron diffraction (RHEED) patterns. Furthermore, we investigate the effect of growth temperature and find the best RHEED patterns at 750 °C. Finally, the CaGe₂ films are immersed in HCl to de-intercalate the Ca atoms, and characterization by x-ray diffraction and Raman spectroscopy show that the resulting films are indeed germanane. Ex situ atomic force microscopy (AFM) indicates that the grain size is on the order of a few micrometers, being limited primarily by terraces induced by the Ge substrate. With optimization of the substrate, it may be possible to realize the long-term goal of large area germanane. These results signal a major advance for 2D semiconductors and layered van der Waals heterostructures for novel electronic, optical, and spintronic devices.

II. EXPERIMENTAL DETAILS

MBE growth is performed in an ultrahigh vacuum (UHV) chamber with base pressure of 2×10^{-10} Torr. Elemental Ge and Ca are evaporated from thermal effusion cells with high purity Ge (99.9999%, Alfa Aesar) and Ca (99.99%, Sigma Aldrich) source materials. Growth rates are determined by a quartz deposition monitor. All films are grown on undoped Ge(111) single-sided polished wafers with an average wafer thickness of 0.35 mm and an orientation tolerance of 0.5° (University Wafer). The starting 2" diameter wafer is cleaved into smaller pieces, which then undergo chemical etching to remove surface oxides/metals and replace them with a thin protective oxide film. Etching involves a sequence of steps beginning with submersion into a 10:1 mixture of H₂O:NH₄OH for 60 s followed by 60 s in a 10:1 mixture of H₂O:H₂SO₄. Finally, substrates are put into a H₂O₂ solution for 60 s before being rinsed by de-ionized (DI) water and inserted into the UHV chamber. The substrate is annealed at 650 °C for 30 min as measured by a thermocouple located near the substrate. In situ RHEED is used to monitor the sample surface throughout the growth and annealing process. The RHEED beam voltage is 15 kV unless otherwise noted. Annealing thermally desorbs the protective oxide from the Ge(111) surface. With the substrate still at 650 °C, a 5 nm

Ge buffer layer is deposited with typical rates of $\sim 2 \text{ \AA}/\text{min}$ as measured by a quartz microbalance deposition monitor. This procedure is followed for all CaGe₂ films grown in this study.

III. RESULTS AND DISCUSSION

The co-deposition growth of CaGe₂ films on Ge(111) is illustrated by the RHEED patterns in Fig. 2. Figure 2(a) shows RHEED patterns of a Ge(111) surface with beam along the $[11\bar{2}0]$ and $[1\bar{1}00]$ in-plane directions (left and right images, respectively) after thermal annealing to remove the surface oxide. Figure 2(b) shows respective patterns after the deposition of the 5 nm Ge buffer layer. The important feature here is sharpening of the RHEED diffraction streaks, indicating a flat and ordered Ge surface. In addition, the appearance of 1/4 and 1/8 order diffraction peaks in the $[11\bar{2}0]$ direction indicates the well-established Ge 2×8 reconstruction of a high quality, clean surface.^{12–14}

The strategy for co-deposition growth of CaGe₂ is to try to achieve the adsorption-limited growth regime, similar to the MBE growth of GaAs, EuO, Bi₂Se₃, and other materials.^{15–19} In such growths, one of the elements is supplied at overpressure and any excess will re-evaporate

from the surface (volatile species) so that the growth rate is determined by deposition of the other element (stable species). If such a growth window exists, then good stoichiometry is obtained. For example, in GaAs growth, the As (volatile species) is supplied at overpressure and the growth rate of GaAs is determined by the deposition of Ga (stable species). For the case of CaGe₂, the evaporation temperature of Ge is $\sim 1100 \text{ }^\circ\text{C}$ and of Ca is $\sim 500 \text{ }^\circ\text{C}$ (based on typical effusion cell temperatures). Therefore, Ca may act as the volatile, re-evaporating species. Furthermore, the bulk phase diagram for Ca–Ge alloys indicates that the CaGe₂ phase is stable for temperatures below $\sim 800 \text{ }^\circ\text{C}$.²⁰ Thus, there is the possibility for an adsorption-limited growth window between 500 and 800 $^\circ\text{C}$.

For the adsorption-limited growth, the sample temperature is raised to 750 $^\circ\text{C}$ and the Ca and Ge fluxes are 8.1×10^{12} and 1.2×10^{13} atoms/cm²s, respectively. The flux ratio of Ca:Ge is 0.68, which has a higher Ca flux than the stoichiometric ratio of 0.5 for CaGe₂ to provide the required excess Ca for adsorption-limited growth.

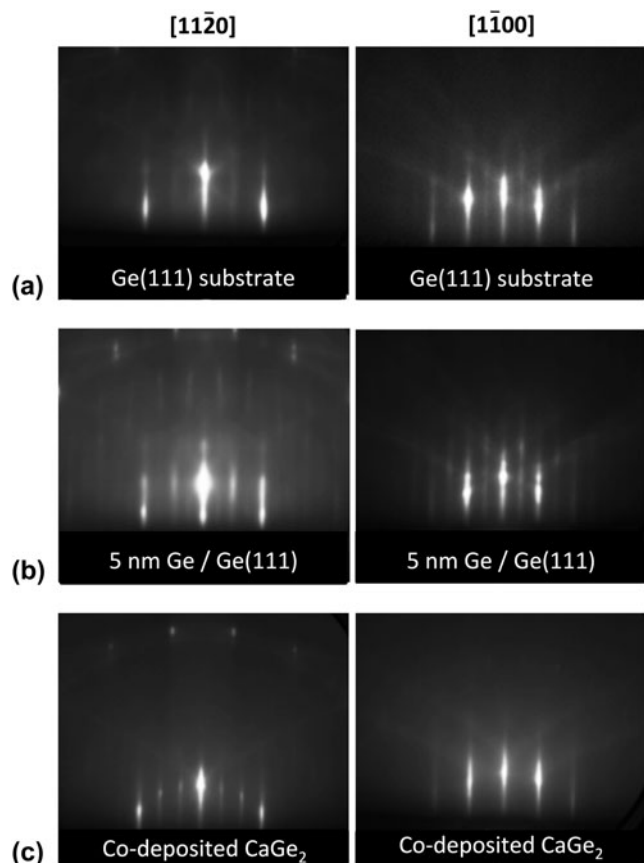


FIG. 2. (a) RHEED patterns for a Ge(111) substrate after UHV annealing. Left and right patterns are for the $[11\bar{2}0]$ and $[1\bar{1}00]$ azimuths, respectively. (b) RHEED patterns after the growth of a 5 nm Ge buffer layer. (c) RHEED patterns after the growth of CaGe₂ at 750 $^\circ\text{C}$.

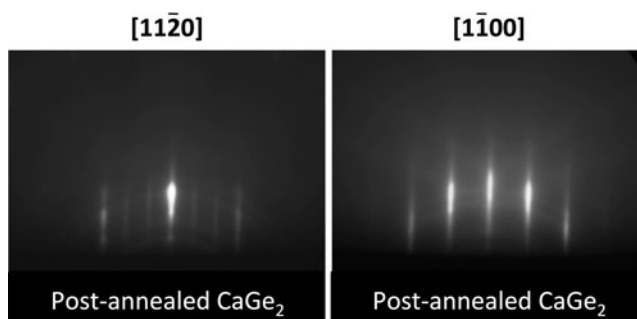


FIG. 3. RHEED patterns for CaGe₂ prepared by depositing 10 nm Ca onto Ge(111) and postannealing up to 750 $^\circ\text{C}$ in UHV.

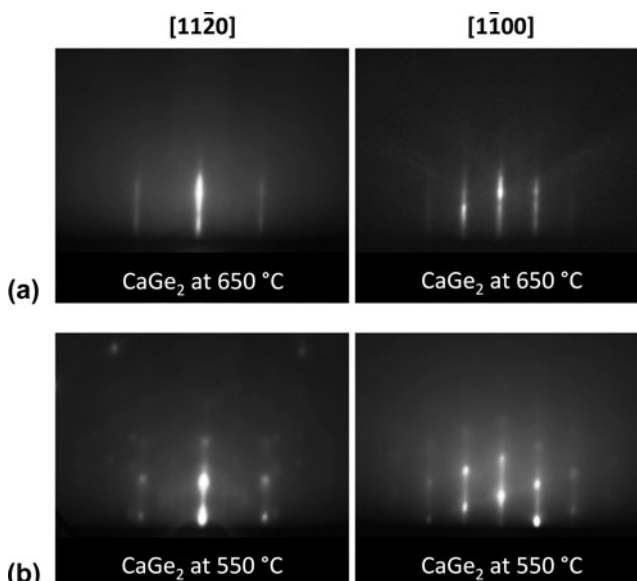


FIG. 4. (a) RHEED patterns for co-deposited CaGe₂ grown at 650 $^\circ\text{C}$. (b) RHEED patterns for co-deposited CaGe₂ grown at 550 $^\circ\text{C}$.

Here, we operationally define the growth rate of the CaGe_2 film as the rate determined by the Ge flux. We note that this is a nominal rate because it does not take into account the possible additional thickness of CaGe_2 due to interdiffusion and reaction of Ca into the Ge(111) substrate.^{9,10} In the remainder of this paper, we cite the nominal film thickness associated with the deposited Ge. The Ge shutter is opened first, with the Ca shutter opening 5 s later. Approximately 10 s after the opening of the Ca shutter, the RHEED pattern shows a sequence of rapid changes in the surface reconstruction until the stable patterns shown in Fig. 2(c) are achieved after another 20 s. This pattern exhibits a 1×3 reconstruction, which remains for the duration of the CaGe_2 co-deposition (for thicknesses at least as high as 150 nm). As we verify later, this is the RHEED pattern for CaGe_2 . Some important features need to be highlighted here. As the Ge(111) pattern changes into the CaGe_2 pattern, the integer order diffraction

peaks remain strongly visible (in both directions). This shows that the main structure of the surface remains unchanged, as expected for the transition from Ge(111) to the CaGe_2 structure. As Ca is introduced into the bulk Ge lattice, the Ge(111) planes maintain their overall structure but every two Ge planes are separated by a Ca layer. We can visualize the process by examining Figs. 1(b) and 1(c), which show projected views of Ge(111) and CaGe_2 . For both materials, the Ge layers have the same structure. The difference is that the CaGe_2 has an atomic layer of intercalated Ca to separate the individual Ge layers (two flat Ge planes can be considered as a single buckled Ge layer with honeycomb structure). The overall structure of the Ge(111) surface should stay unchanged, as shown by integer order diffraction peaks maintaining their position and intensity throughout the deposition. Thus, the evolution of the RHEED pattern is consistent with the transition from Ge(111) to CaGe_2 .

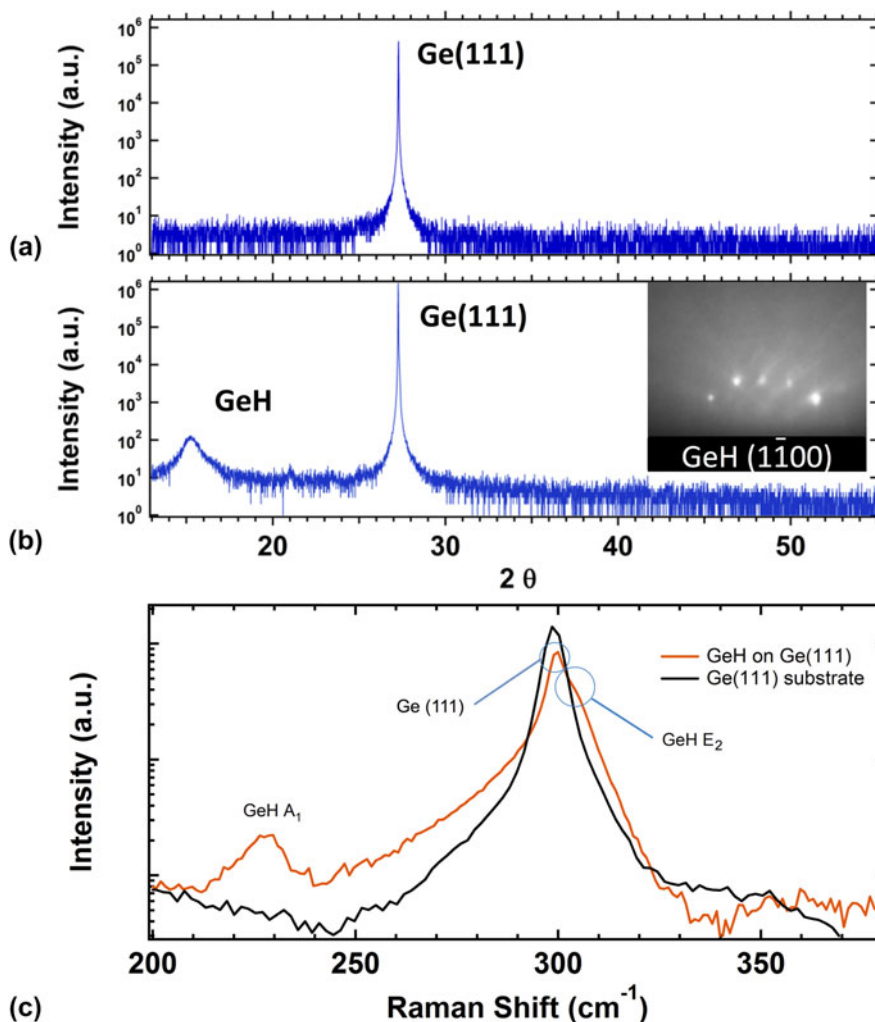


FIG. 5. (a) θ - 2θ x-ray diffraction scan of a Ge(111) substrate. (b) θ - 2θ x-ray diffraction scan of a 150 nm GeH film (sample A). The peak at 15.2° corresponds to (0001)-oriented GeH. Inset: RHEED pattern of sample A with beam along $[1\bar{1}00]$ and beam energy of 30 kV. (c) Raman spectra for sample A (orange curve) and Ge(111) substrate (black curve). Data are plotted on a log scale.

To verify that the 1×3 reconstruction is indeed the pattern for CaGe_2 , we synthesized CaGe_2 using the established method of Ca deposition on Ge(111) followed by postannealing.⁹ Starting with the annealed Ge(111) surface and growing a buffer layer of Ge, we then deposit 20 nm Ca at room temperature. During Ca growth, the RHEED pattern quickly loses its streaks and becomes featureless, indicating an amorphous Ca layer. We then proceed to heat up the sample to 750 °C to anneal and evaporate extra Ca from the surface. As the sample temperature rises, the amorphous RHEED begins to show integer order diffraction peaks of the Ge(111) lattice around 480 °C. As the temperature continues rising, the 1×3 reconstruction peaks appear at around 690 °C and remain for the duration of the annealing process. The final RHEED pattern for postannealed CaGe_2 is shown in Fig. 3. We can see that both directions show the similar 1×3 reconstructed RHEED patterns as our co-deposition growth, so we verify that our co-deposition growth produces CaGe_2 films. Another important conclusion is that the RHEED pattern for the co-deposition growth is significantly better than for the postannealing growth evident from the latter showing slight polycrystalline rings in the pattern. This might be due to the formation of other stable phases such as CaGe in the postannealing method, which are suppressed in the adsorption-limited growth regime.

Next, we investigate the growth temperature window by performing co-deposition growth at substrate temperatures

of 650 and 550 °C. Figure 4(a) shows the RHEED patterns for 650 °C, while Fig. 4(b) shows RHEED patterns for 550 °C. It is clear that as the growth temperature is decreased, the resulting CaGe_2 film degrades in quality, as seen from the RHEED pattern losing the 1×3 reconstruction and the integer order streaks starting to exhibit superimposed dots. The dot pattern is indicative of a 3D reciprocal lattice, which emerges as the surface becomes slightly rougher and the RHEED beam diffracts via transmission through islands on the surface. The asymmetry of the dot pattern is due to a slight out-of-plane tilt of the sample holder.

We next focus on the conversion of the CaGe_2 films to germanane by submerging in 37% HCl solution (aqueous) at various temperatures (-40 °C to room temperature) and for various times (1–24 h).^{5,11} For characterization by x-ray diffraction and Raman spectroscopy, we synthesize a 150 nm CaGe_2 film (sample A) and de-intercalate by submerging in HCl at 5 °C for 1 h. The θ - 2θ x-ray diffraction scan for the resulting film shows two peaks [Fig. 5(b)]. The peak at $2\theta = 27.3^\circ$ is from the Ge(111) substrate [see Fig. 5(a)], while the peak at $2\theta = 15.2^\circ$ corresponds to the (0001)-oriented germanane.⁵ This confirms that the resulting film is germanane. The inset of Fig. 5(b) shows a RHEED pattern taken with beam energy of 30 kV. The diffraction spots form a circular pattern and slide with azimuthal rotation, which indicates a 2D reciprocal lattice. The single RHEED pattern also indicates

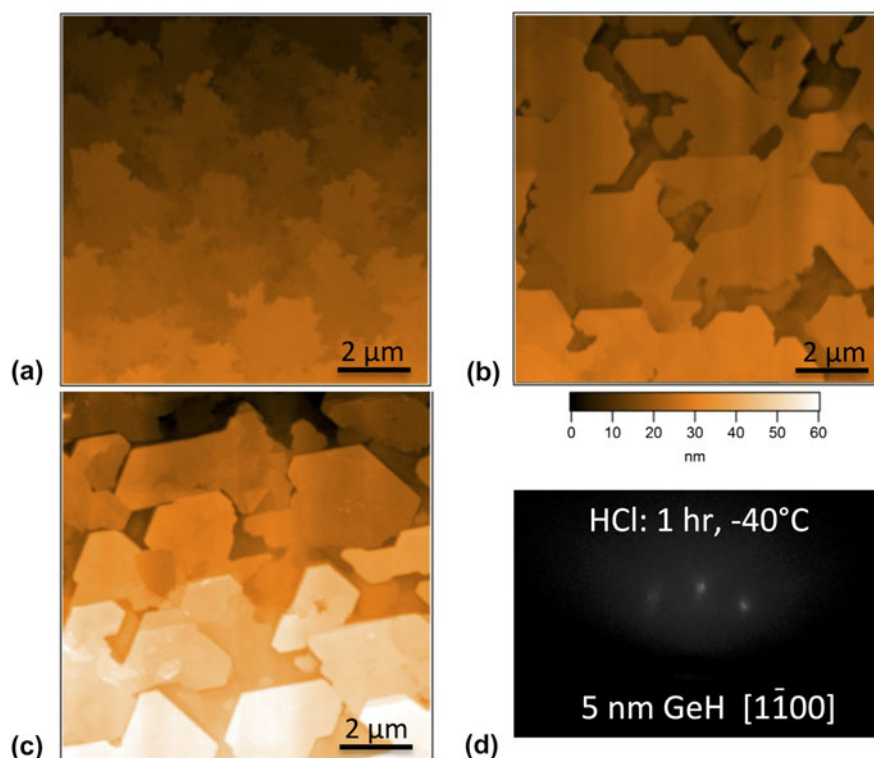


FIG. 6. (a) AFM image of Ge(111) substrate. (b) AFM image of 5 nm CaGe_2 on Ge(111) (sample B). (c) AFM image of sample B after de-intercalation in HCl solution for 1 h at -40 °C (i.e., 5 nm GeH). (d) RHEED pattern of 5 nm GeH with beam along $[1\bar{1}00]$.

that the orientation of the germanane film is determined by the underlying Ge(111) substrate. Raman spectroscopy also indicates that the resulting film is germanane. Figure 5(c) shows the Raman spectrum for sample A (orange curve), which is different from the Raman spectrum of bare Ge(111) substrate (black curve) which has a single peak at 297 cm⁻¹ Raman shift. For sample A, we observe two large peaks on the Raman spectrum. The peak at 228 cm⁻¹ corresponds to the A₁ germanane mode, while the E₂ GeH mode at 302 cm⁻¹ can be seen as a kink on the Ge(111) substrate peak. These peaks are consistent with Raman spectra of bulk germanane crystals.⁵ Because the A₁ peak is specific to germanane (not present in bulk germanium), it is a strong indicator for the presence of germanane. Thus, x-ray diffraction, RHEED, and Raman spectroscopy provide very strong evidence that the resulting film is germanane.

To investigate the morphology of the film, we perform ex situ AFM measurements on a thin 5 nm CaGe₂ film (sample B) before and after de-intercalating in HCl at -40 °C for 1 h (Fig. 6). For reference, we show an AFM scan of a 5 nm Ge buffer layer on a Ge(111) substrate taken from the same wafer [Fig. 6(a)]. This Ge buffer layer is grown at 650 °C and then heated to 750 °C to reproduce the conditions just prior to the CaGe₂ deposition. AFM of the Ge buffer layer shows the formation of terraces due to the miscut of the Ge(111) substrate. The typical height of each terrace is ~5 nm. Figure 6(b) shows that with the growth of 5 nm CaGe₂, the terrace size becomes larger. This indicates the propensity for the CaGe₂ to grow flat on the (111) plane. To maintain the global miscut of the substrate, the terrace height also increases to typical values of ~10 nm (note that a terrace width of a few micrometers and height of ~10 nm corresponds to a miscut of ~0.2°). After de-intercalation [Fig. 6(c)], the overall terrace size is similar to the CaGe₂ film. To determine the local roughness of the film, we analyze the rms roughness within individual terraces. We find that the Ge buffer has rms roughness of 0.26 nm, the CaGe₂ film has rms roughness of 0.40 nm, and the germanane film has rms roughness of 0.25 nm. Most importantly, even after submerging in HCl solution to obtain germanane, the individual terraces remain atomically smooth. For reference, we perform RHEED measurements on sample B after HCl processing [Fig. 6(d)]. These patterns are similar to sample A [Fig. 5(b), inset] with 2D-like diffraction spots, but are dimmer due to the 15 kV beam voltage. The 2D-like pattern is consistent with the atomic scale smoothness indicated by the AFM measurements.

Auger electron spectroscopy is used to further characterize the films. For reference, Fig. 7(a) shows the Auger spectrum of a Ge(111) substrate prepared by chemical etching and UHV annealing. This spectrum is measured in situ after the UHV annealing. Important features here are the

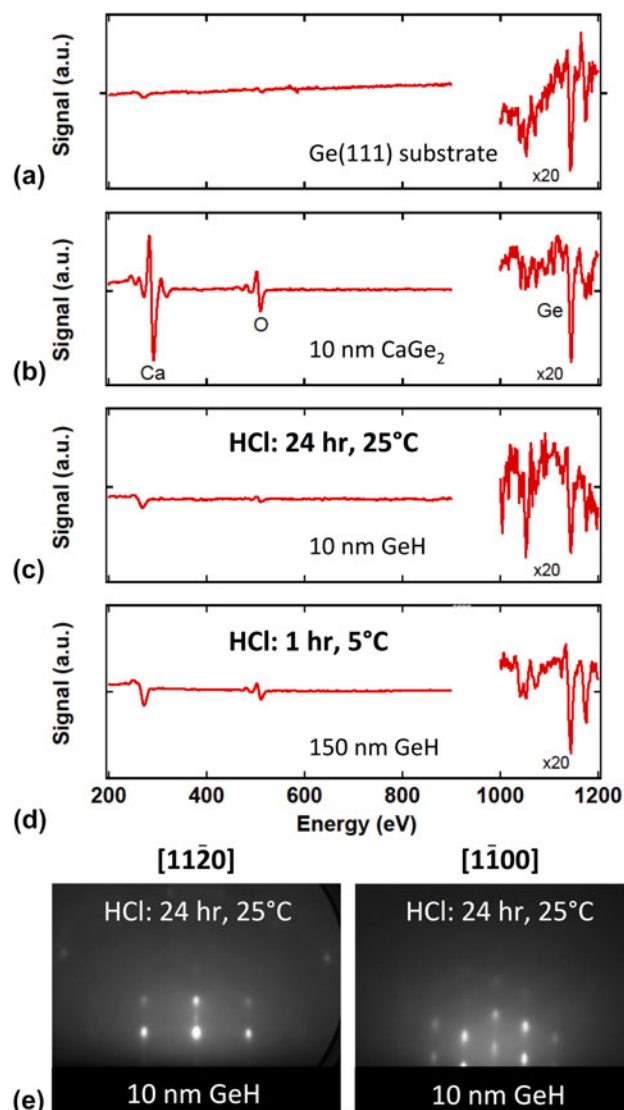


FIG. 7. (a) In situ Auger spectrum for Ge(111) prepared by chemical etching and UHV annealing. (b) Ex situ Auger spectrum for a 10 nm CaGe₂ film (sample C). (c) Auger spectrum for sample C after HCl immersion at 25 °C for 24 h. (d) Auger spectrum for sample A after HCl immersion at 5 °C for 1 h. (e) RHEED patterns for sample C after HCl immersion.

relatively small oxygen peak at 510 eV and the presence of very weak Ge peaks in the 1000–1200 eV range. There is also a small peak near 260 eV that is likely to come from carbon contamination. Figure 7(b) shows the Auger spectrum taken after co-deposition growth of 10 nm CaGe₂ (sample C), giving a clear Ca peak at 294 eV and still maintaining the Ge peaks in the 1100 eV range. This spectrum is taken ex situ and the large O peak likely appears due to exposure of CaGe₂ films to atmosphere. Next, we perform de-intercalation by HCl at room temperature for 24 h and subsequently measure the Auger spectrum [Fig. 7(c)]. The Ca peak disappears from the pattern (within noise limits), while the small peak near

260 eV remains, similar to the fresh Ge(111) surface. Despite the exposure to atmosphere, the O peak is severely reduced, which indicates that the film is relatively resistant to oxidation. For comparison, we perform Auger spectroscopy on sample A after de-intercalation (150 nm thick, 5 °C, 1 h) and a very similar Auger spectrum is obtained. To compare the de-intercalation at higher temperatures and for longer times, we perform RHEED measurements on sample C and the resulting patterns are shown in Fig. 7(d). Unlike sample A (5 °C, 1 h) and sample B (−40 °C, 1 h) which exhibit 2D patterns, sample C exhibits 3D-like RHEED patterns (i.e., fixed spots that change in intensity as the sample is rotated in-plane). This indicates that germanane films are smoother for lower temperatures and shorter times of the HCl processing. More detailed studies are needed to better understand the de-intercalation process.

IV. CONCLUSION

We have demonstrated the successful co-deposition of CaGe₂ films on Ge(111) by MBE. The growth occurs within an adsorption-limited growth regime with overpressure of Ca, which ensures stoichiometry of the film. The best RHEED patterns are obtained at a growth temperature 750 °C. We compare this new growth method with previous methods based on Ca deposition on Ge(111) and postannealing. We find that the co-deposition method produces RHEED patterns that are free of the polycrystalline rings that occur for the postannealing growth, which suggests that the co-deposition method inhibits the formation of other stable phases such as CaGe. The CaGe₂ films are then immersed in hydrochloric acid and subsequent characterizations by x-ray diffraction and Raman spectroscopy indicate that the resulting film is germanane. RHEED patterns indicate that the crystalline orientation of the germanane film is determined by the underlying Ge(111) substrate. Furthermore, both RHEED and AFM measurements indicate that the local morphology is smooth at the atomic scale. However, the grain size is limited to a few micrometers, primarily due to the miscut of the Ge substrate. Thus, optimization of the substrate could yield much larger grain sizes. These results provide a significant advance toward the long-term goal of developing large area germanane.

ACKNOWLEDGMENTS

We acknowledge the technical assistance of Hua Wen and Yunqiu Kelly Luo. This work was supported by ARO (Grant No. W911NF-11-1-0182), NSF (Grant No. DMR-MRSEC 0820414), UC Labs (Grant No. 12-LR-239009), ONR (Grant No. N00014-12-1-0469), and ENCOMM. JEG acknowledges the support of ARO (Grant No. W911-NF-12-1-0481).

REFERENCES

1. K.S. Novoselov, A.K. Geim, S.V. Morozov, D. Jiang, M.I. Katsnelson, I.V. Grigorieva, S.V. Dubonos, and A.A. Firsov: Two-dimensional gas of massless Dirac fermions in graphene. *Nature* **438**, 197–200 (2005).
2. Y. Zhang, Y.-W. Tan, H.L. Stormer, and P. Kim: Experimental observation of the quantum Hall effect and Berry's phase in graphene. *Nature* **438**, 201–204 (2005).
3. A.K. Geim and K.S. Novoselov: The rise of graphene. *Nat. Mater.* **6**, 183–191 (2007).
4. S. Butler, S.M. Hollen, L. Cao, Y. Cui, J. Gupta, H.R. Gutierrez, T.F. Heinz, S.S. Hong, J. Huang, A.F. Ismach, E. Johnston-Halperin, M. Kuno, V.V. Plashnitsa, R.D. Robinson, R.S. Ruoff, S. Salahuddin, J. Shan, L. Shi, M.G. Spencer, M. Terrones, W. Windl, and J.E. Goldberger: Progress, challenges, and opportunities in two-dimensional materials beyond graphene. *ACS Nano* **7**, 2898–2926 (2013).
5. E. Bianco, S. Butler, S. Jiang, O. Restrepo, W. Windl, and J.E. Goldberger: Stability and exfoliation of germanane: A germanium graphane analogue. *ACS Nano* **7**, 4414–4421 (2013).
6. Y. Kato, R.C. Myers, A.C. Gossard, and D.D. Awschalom: Coherent spin manipulation without magnetic fields in strained semiconductors. *Nature* **427**, 50–53 (2004).
7. Y.K. Kato, R.C. Myers, A.C. Gossard, and D.D. Awschalom: Observation of the spin Hall effect in semiconductors. *Science* **306**, 1910–1913 (2004).
8. M. König, S. Wiedmann, C. Brune, A. Roth, H. Buhmann, L.W. Molenkamp, X.-L. Qi, and S.-C. Zhang: Quantum spin hall insulator state in HgTe quantum Wells. *Science* **318**, 766–770 (2007).
9. G. Vogg, C. Miesner, M.S. Brandt, M. Stutzmann, and G. Abstreiter: Epitaxial alloy films of Zintl-phase Ca(Si_{1-x}Ge_x)₂. *J. Cryst. Growth* **223**, 573–576 (2001).
10. J.F. Morar and M. Wittmer: Metallic CaSi₂ epitaxial films on Si (111). *Phys. Rev. B* **37**, 2618–2621 (1988).
11. G. Vogg, M.S. Brandt, and M. Stutzmann: Polygermyne—A prototype system for layered germanium polymers. *Adv. Mater.* **12**, 1278–1281 (2000).
12. P.W. Palmberg and W.T. Peria: Low energy electron diffraction studies of Ge and Na-covered Ge. *Surf. Sci.* **6**, 57–97 (1967).
13. T. Ichikawa and S. Ino: Double diffraction spots in RHEED patterns from clean Ge(111) and Si(001) surfaces. *Surf. Sci.* **85**, 221–243 (1979).
14. T. Ichikawa and S. Ino: RHEED study on the Ge/Si(111) and Si/Ge(111) systems: Reaction of Ge with the Si(111)(7×7) surface. *Surf. Sci.* **136**, 267–284 (1984).
15. J.J. Harris, B.A. Joyce, and P.J. Dobson: Oscillations in the surface structure of Sn-doped GaAs during growth by MBE. *Surf. Sci. Lett.* **103**, L90–L96 (1981).
16. J.H. Neave, B.A. Joyce, P.J. Dobson, and N. Norton: Dynamics of film growth of GaAs by MBE from RHEED observations. *Appl. Phys. A* **31**, 1–8 (1983).
17. R.W. Ulbricht, A. Schmehl, T. Heeg, J. Schubert, and D.G. Schlom: Adsorption-controlled growth of EuO by molecular-beam epitaxy. *Appl. Phys. Lett.* **93**, 102105 (2008).
18. G. Zhang, H. Qin, J. Teng, J. Guo, Q. Guo, X. Dai, Z. Fang, and K. Wu: Quintuple-layer epitaxy of thin films of topological insulator Bi₂Se₃. *Appl. Phys. Lett.* **95**, 053114 (2009).
19. A.G. Swartz, J. Cirraldo, J.J.I.W. Wong, Y. Li, W. Han, T. Lin, S. Mack, D.D. Awschalom, and R.K. Kawakami: Epitaxial EuO thin films on GaAs. *Appl. Phys. Lett.* **97**, 112509 (2010).
20. A. Palenzona, P. Manfrinetti, and M.L. Fornasini: The phase diagram of the Ca-Ge system. *J. Alloys Compd.* **345**, 144–147 (2002).