

- Please complete the PRE-REGISTRATION LINK at:

<https://go.osu.edu/2023hccloverbudcamp>

OR follow the QR code to access the link directly.

- Complete the enclosed Health Form for your Cloverbud Camper & bring it with your \$40 registration fee to the Henry County Extension office.

Address: 104 E. Washington St. Suite #302 Napoleon, OH 43545

- Call or email with any questions at: 419-592-0806
or parcher.6@osu.edu



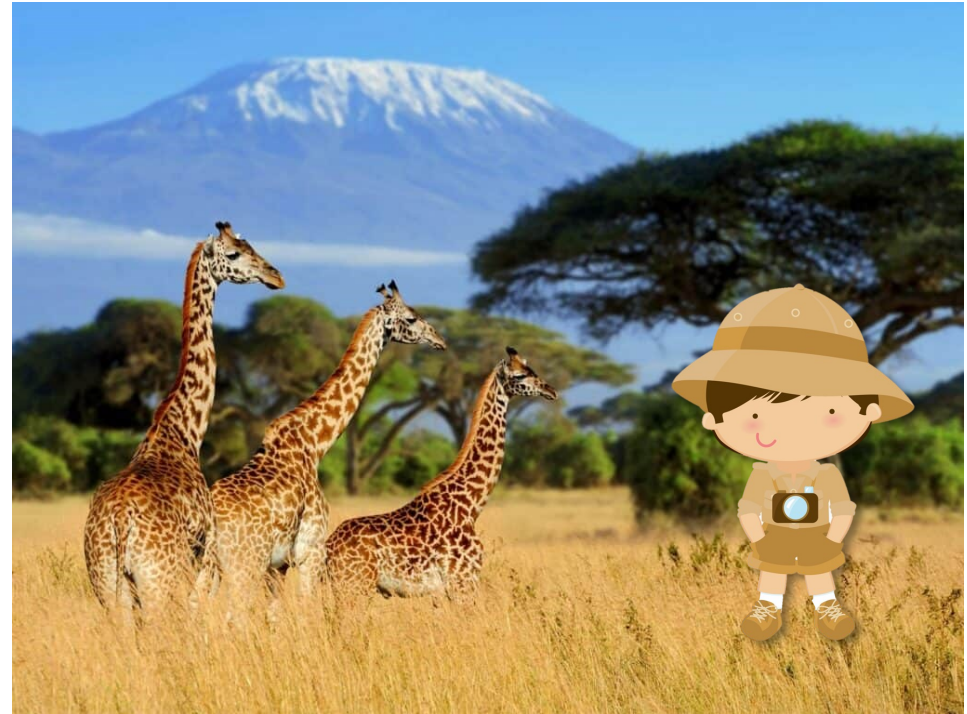
THE OHIO STATE UNIVERSITY
COLLEGE OF FOOD, AGRICULTURAL,
AND ENVIRONMENTAL SCIENCES



Sunrise Safari at Cloverbud Camp

Join us June 6, 7, & 8

At the Henry County Fairgrounds



9:00am-12:00noon

Meet at the AgHall building

Day 1: "Welcome to the Jungle"
Day 2: "Adventuring to the Waterhole"
Day 3: "Sprinting through the Safari"

A \$40 registration fee
includes a t-shirt, snacks & tons of fun!

Deadline to register: MAY 25

Day 1: Welcome to the Jungle

Race through the rainforest!
Then meet with Dr. Kate and
her fabulous friends!

Day 2: Adventuring to the Wateringhole

**Please be sure to bring
bathing suits, a change of
clothes and a towel!**

Get excited for Wishy Washy
Wild Water Fun Day!

Day 3: Sprinting Through the Safari

Work as a team to complete
Field Day events to gather
clues for a big ol' scavenger
hunt!

