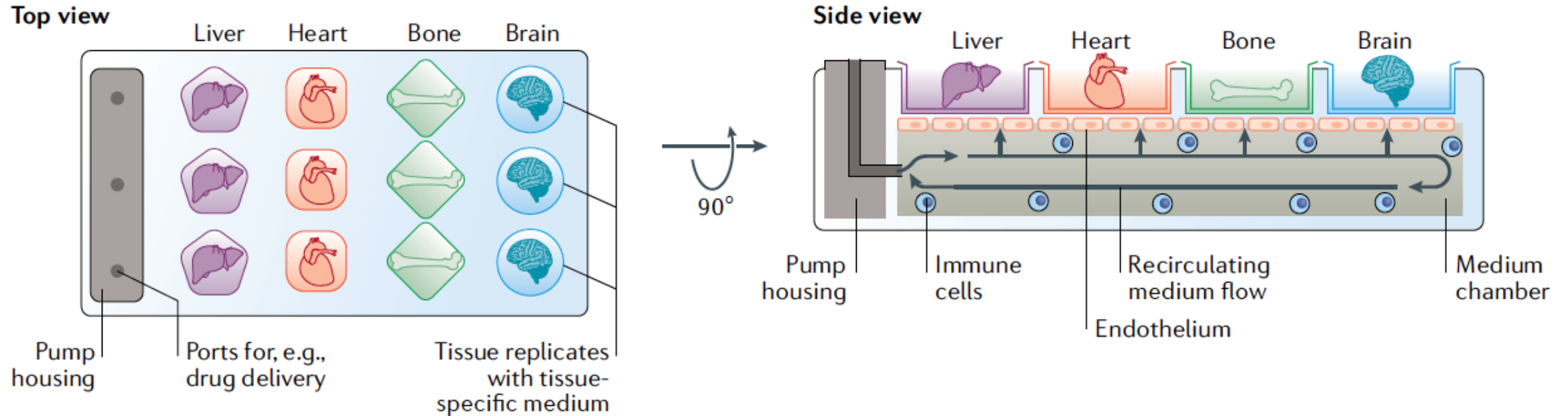


The starting point: Organs-on-chips

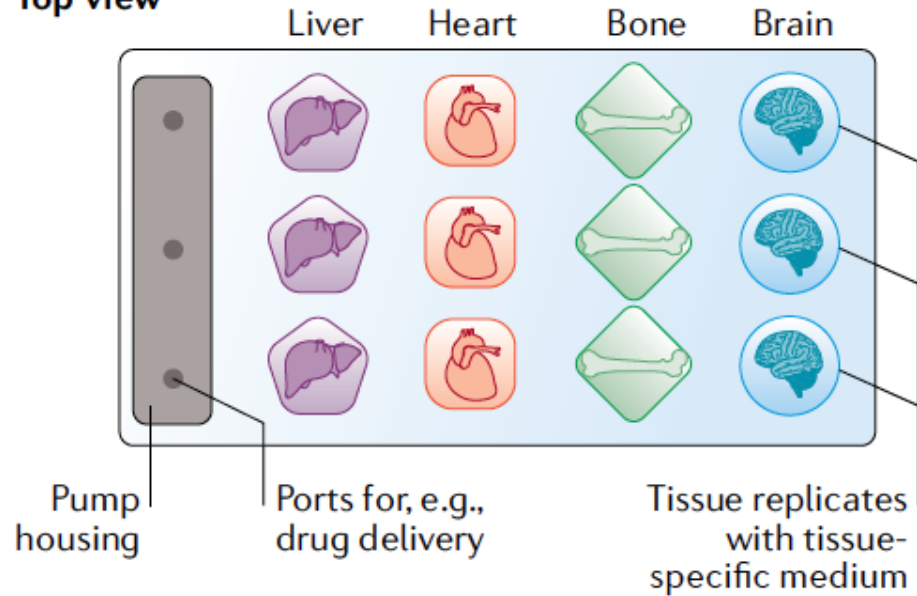


Lucie A. Low, et al., Organs-on-chips: into the next decade. *Nature Reviews Drug Discovery*, 2020

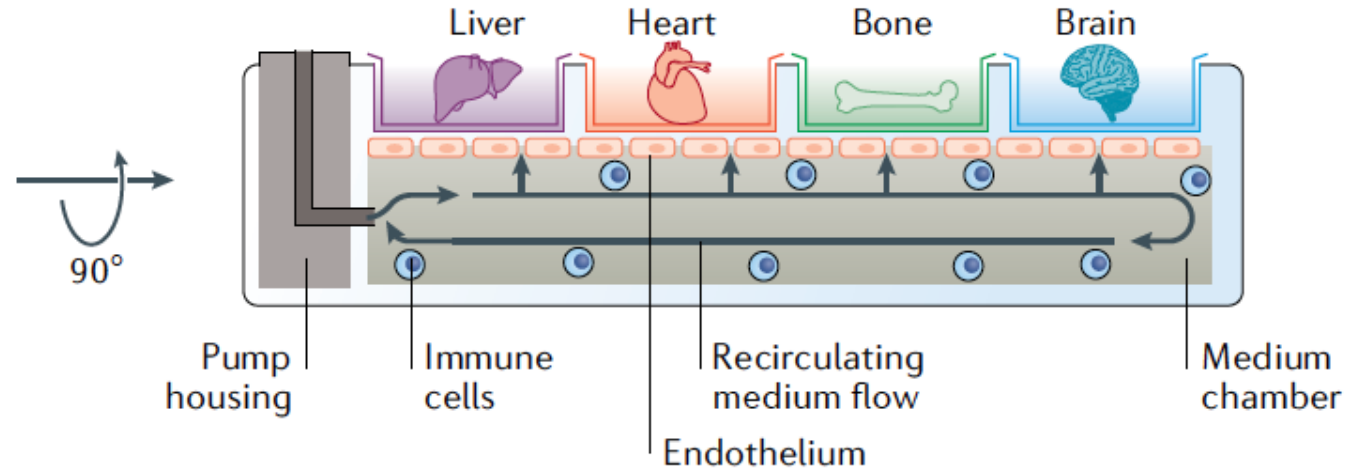
- Systemic effect, synergistic effect, global effect
- Feed in, and feed back
- An integrated platform for better replication of the body function

A Team

Top view

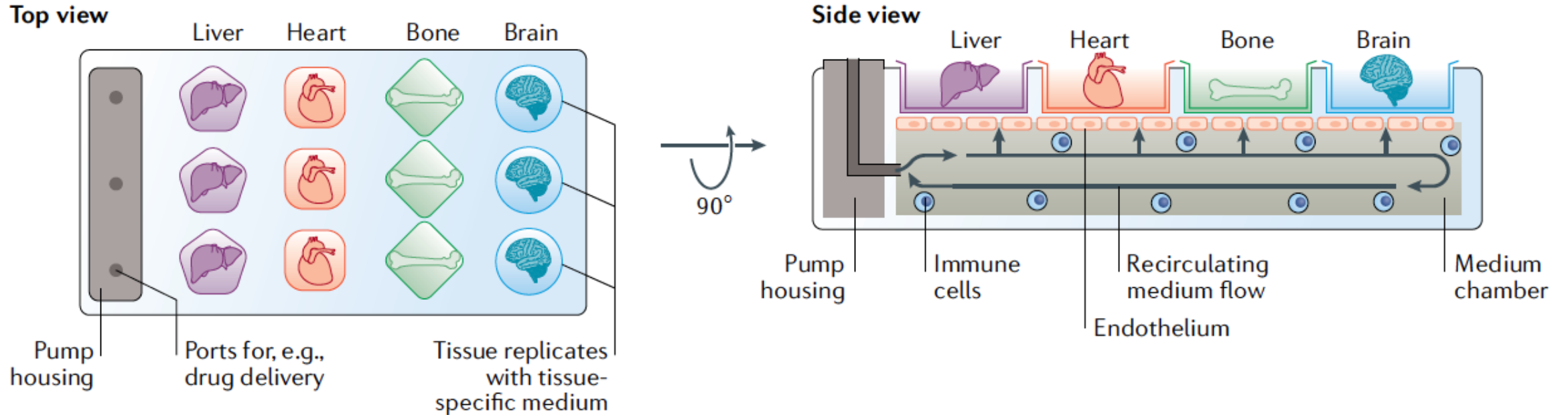


Side view



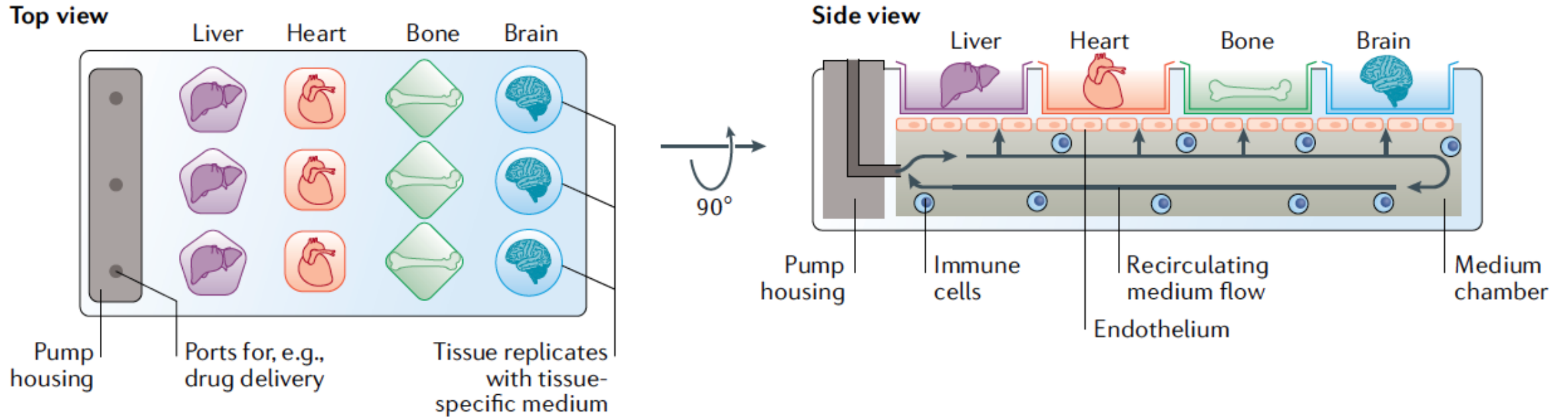
- One personnel can significantly affect others.
- We depend on each other, so we have to love and support each other.
- To grow and to heal in a team, we need to be open and diverse.
- No internal competition, as everyone is unique and important.

Brain storming



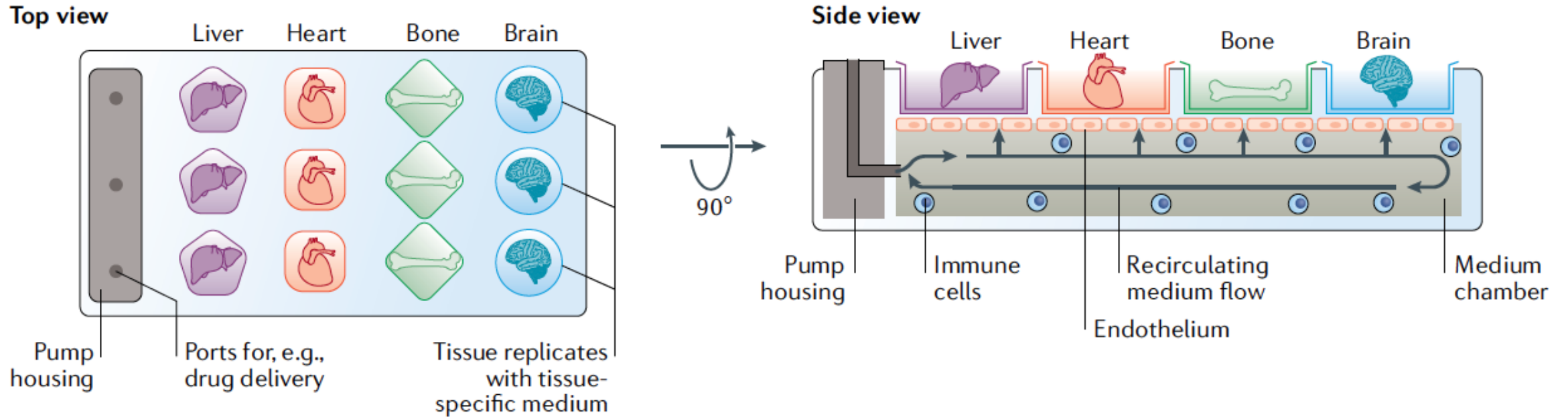
- A best idea comes from iterative evaluations and two-way interactions.
- Diverse background and perspectives are very important for innovation.
- A great idea should benefit everyone in a team, so everyone should participate.

Scientific approach



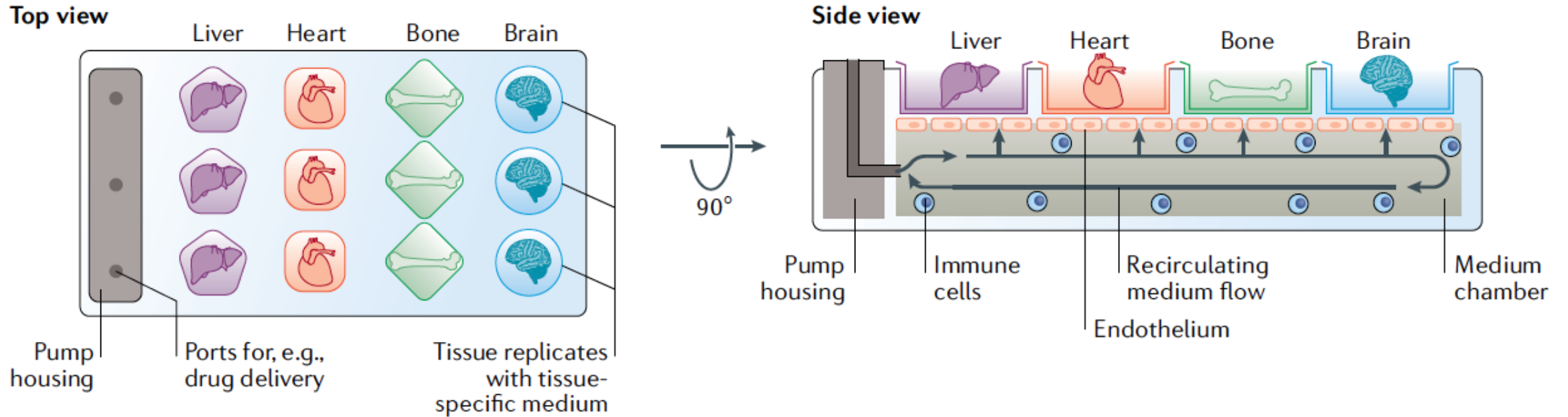
- We need to do systematic and iterated work, and rely on information from different sources.
- We need a good platform or mindset to do great science, try to form that earlier than later.

Mentor-mentee relationship



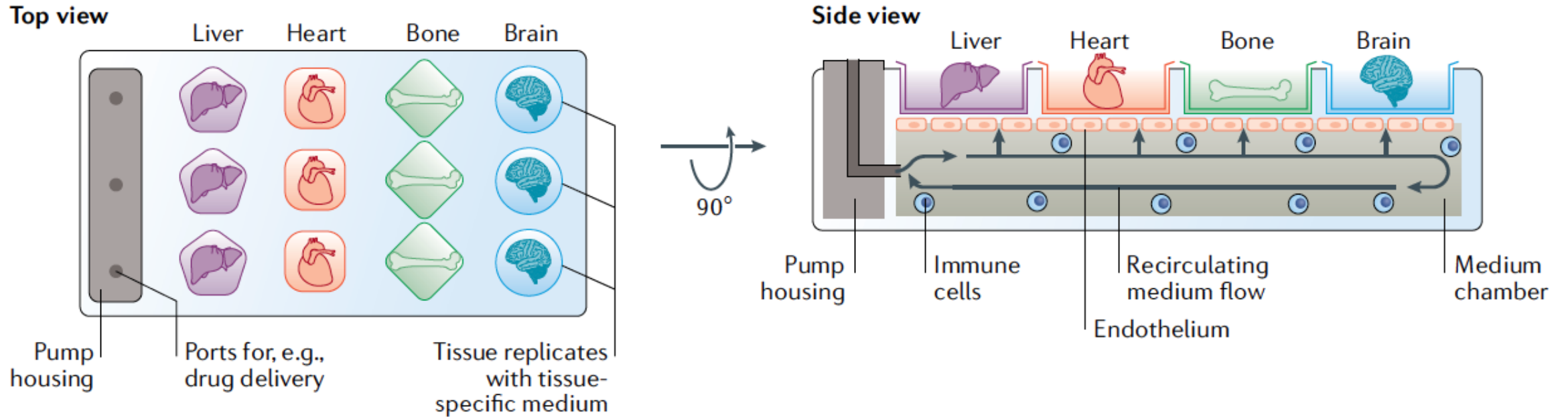
- Be open, as it is a two-way interaction.
- Trust each other.
- The development of one relationship can affect other relationships. So one mentee can affect others' career trajectories in the same group.

How to achieve your success?



- 'Systemic effect', synergistic effect
- All your experience and career components are valuable.
- We need to create a platform and develop some strategies.

Life-work balance



- Synergistic effect, many parts of your life need to be well.
- There would be some stimulant to promote the life-work balance. Find the best one for you.
- Constant flow, and try to be regular.