

# Synthetic reality enables “personalized” design and adaptation

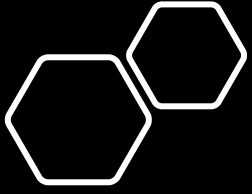


- Real life may not always require the presence of reality.
- In a personalized and adaptable manner, we may manage our feelings and reactions better.
- Synthetic reality should not simply rely on artificial intelligence (AI).
- Human-centered "synthetic reality" is applicable across all areas of society.



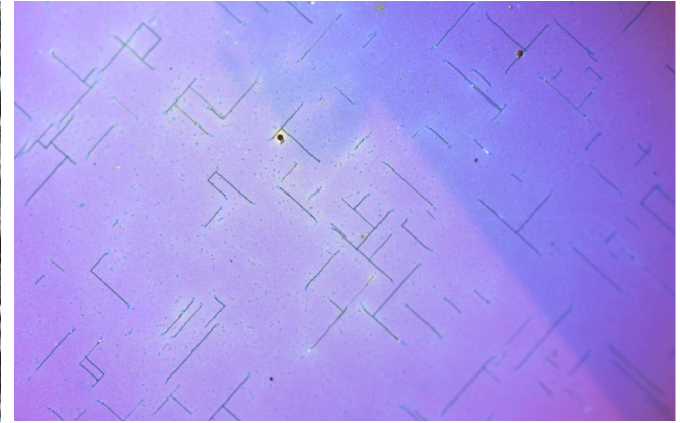
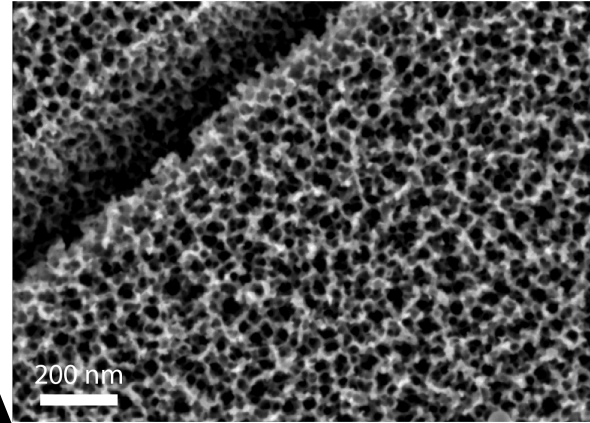
Materials may facilitate *emotional engineering*





# Synthetic reality represents a next frontier of materials science

<https://www.chicagotribune.com/entertainment/museums/>





Material-based  
synthetic reality  
can reconnect us  
to the natural  
world

<https://oxman.com/>

Neri Oxman

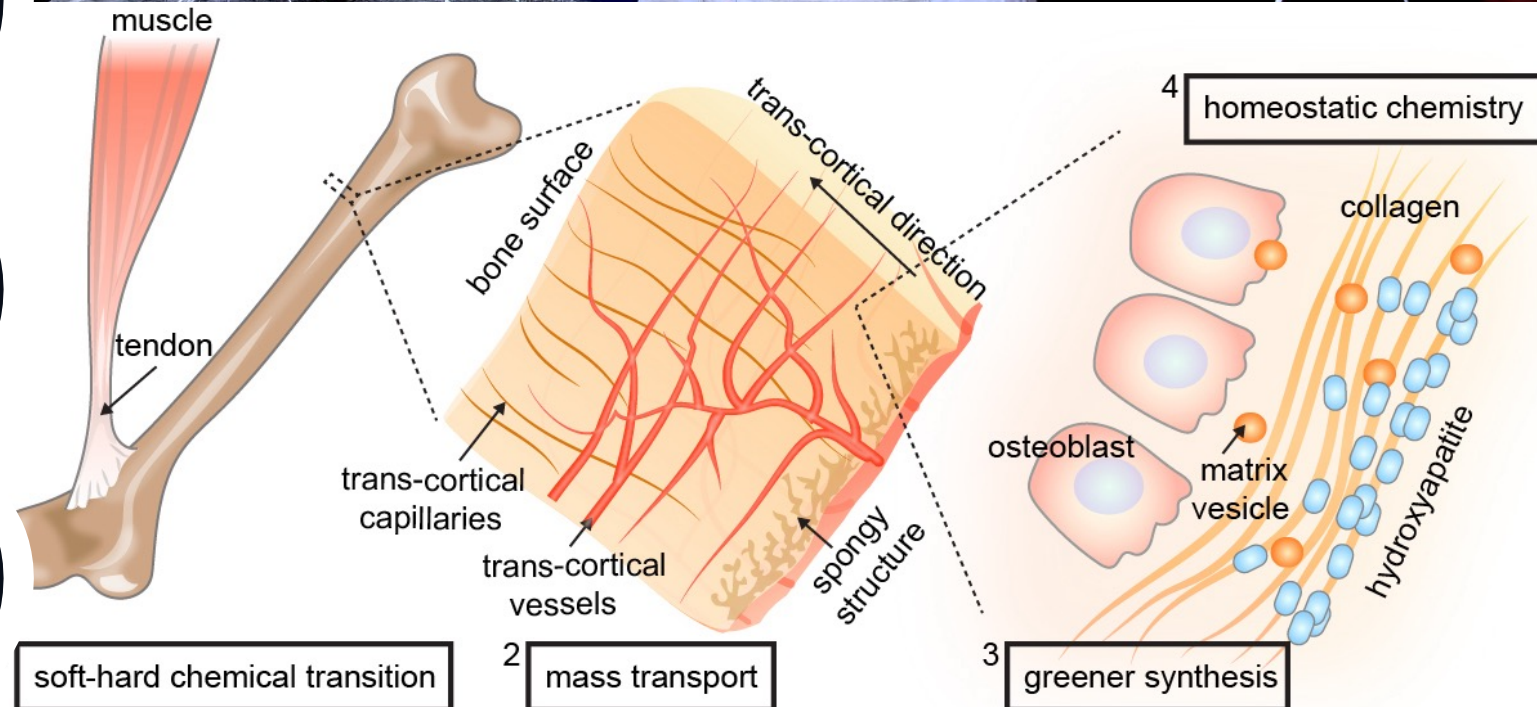




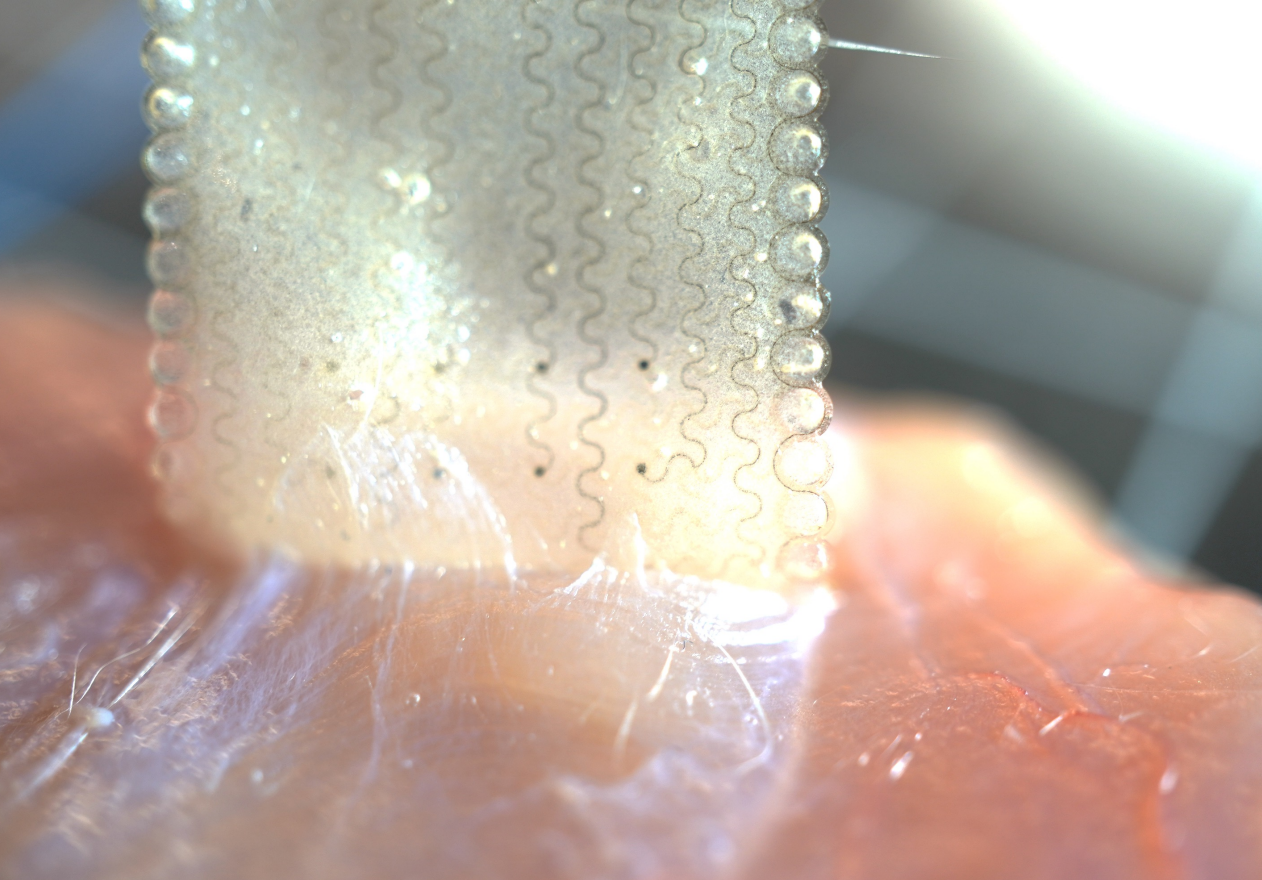
- Photo by Lee Snider/Shutterstock



Biomimetics may be a key for human-centered synthetic reality

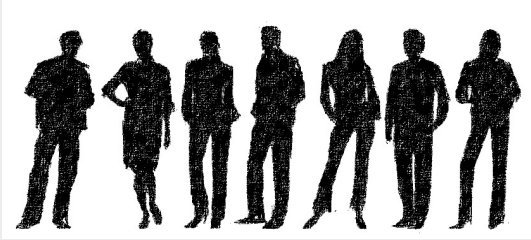






Our group develops tissue-like materials and minimally invasive medical devices





**Materials that produce synthetic reality can blur the lines between humans and the environment**