

The Making of Hawks and Doves*

Ulrike Malmendier[†]

UC Berkeley, NBER, CEPR, and CESifo

Stefan Nagel[‡]

University of Chicago, NBER, CEPR, and CESifo

Zhen Yan[§]

Cornerstone Research

November 17, 2019

Abstract

We argue that central bankers' personal inflation experiences significantly alter their inflation forecasts, votes, and speeches. First, we show that inflation experiences have a direct impact on Federal Open Market Committee members' inflation forecasts in their semi-annual Monetary Policy Reports to U.S. Congress. Second, members with higher inflation experiences are significantly more likely to cast a hawkish dissent. Over the FOMC's voting history since March 1951, an increase in a member's experience-based inflation forecast by one within-meeting standard deviation raises the probability of a hawkish dissent by about one third, and decreases the probability of a dovish dissent also by about one third. Third, higher inflation experiences also predict a significantly more hawkish tone in speeches. Finally, aggregating over all FOMC members present at a meeting, the average experience-based forecast helps predict the federal funds target rate, over and above conventional forward-looking Taylor rule components. Our findings indicate strong and long-lasting effects of personal inflation experiences even among monetary-policy experts, and point to the importance of FOMC members' selection.

Keywords: Monetary policy, Experience effects, Availability bias, Inflation forecasts, Federal Funds rate

*We thank Scott Baker, Michael McMahon, Ricardo Reis, David Robinson, Christina Romer, David Romer, Jeremy Stein, and workshop participants at the Bank of Finland (Finlands Bank/Suomen Pankki), Bank of Sweden (Sveriges Riksbank), Harvard University, London School of Economics, Max Planck Institute for Research on Collective Goods, Northwestern University, Stanford University, Stockholm School of Economics, Temple University, UC Berkeley, University of Bonn, University of Chicago, University of Michigan Economics Department and Law School, Vanderbilt University, as well as the NBER SI Monetary Economics meeting and the American Economic Association meeting, Research in Behavioral Finance Conference 2016, and Annual Research Conference of the European Central Bank for helpful comments. Canyao Liu, Jonas Sobott, Marius Günzel, Jeffrey Zeidel, and Albert Lee provided excellent research assistance.

[†]Department of Economics and Haas School of Business, University of California, 501 Evans Hall, Berkeley, CA 94720-3880, ulrike@econ.berkeley.edu

[‡]Booth School of Business, University of Chicago, 5807 South Woodlawn Avenue, Chicago, IL 60637, e-mail: stefan.nagel@chicagobooth.edu

[§]Cornerstone Research, 699 Boylston Street, Boston, MA, 02116, e-mail: zyan@cornerstone.com

1. Introduction

Members of central-bank committees, such as the Federal Open Market Committee (FOMC) or the European Central Bank (ECB) Governing Council, often disagree on future inflation rates and whether to loosen or tighten monetary policy. Why do these highly educated and well-informed experts differ in their forecasts and recommendations when they have access to the same data and tools? Why do they deviate in their expectations from forecasts produced by their staff as documented by Romer and Romer (2008)?

Existing macroeconomic models of optimal monetary policy do not offer much of an explanation. Monetary policy makers, if modeled at all, assign the same weights to inflation and output stabilization, based on private-sector agent preferences and objective data, when maximizing social welfare (see, e. g., Rotemberg and Woodford 1999). Even in models with learning, such as Sargent (1999), policy makers form beliefs based on objective historical data, which leaves no room for subjective disagreement.¹

These modeling approaches are hard to square with the discussions among practitioners and in the media classifying central bankers as ‘hawks’ or ‘doves.’ Debates about new appointments and their policy implications typically refer to appointees’ background and personal experiences. For example, when Charles Plosser and Richard Fisher retired as the Philadelphia and Dallas Federal Reserve Bank Presidents in 2014, much of the news coverage was about ‘the generational shift rooted in personal inflation experiences: *“Annual inflation in the United States has averaged 3.8 percent during Mr. Plosser’s adult life. By contrast, inflation has averaged just 2.5 percent during the adult life of Narayana Kocherlakota, president of the Federal Reserve Bank of Minneapolis, who at 50 is the youngest member of the policymaking committee and who has become the most outspoken proponent of expanding the Fed’s stimulus campaign.”*²

¹ Outside of macroeconomics, research on group decision-making has explored sources of heterogeneity among monetary policy committee members, including variation in preferences such as career-concerns, and differential information. For an overview, see Sibert (2006).

² See “Charles Plosser and Richard Fisher, Both Dissenters, to Retire From Fed,” by Binyamin Appelbaum, New York Times Sept. 22, 2014, www.nytimes.com/2014/09/23/business/fed-official-critical-of-policies-set-to-retire-in-march.html.

46 In this paper, we argue that personal experiences exert a measurable and statistically sig-
 47 nificant longterm influence on FOMC members. Whether and at what age they experienced,
 48 say, the Great Inflation or other inflation realizations, affects their stated beliefs about future
 49 inflation, their monetary-policy decisions, and the tone of their speeches on monetary-policy
 50 issues. We further show that time-variation in the average inflation experiences of all FOMC
 51 members present at a given meeting helps explain deviations of the federal funds rate from a
 52 conventional forward-looking Taylor rule.

53 Our research hypothesis and design build on a growing literature on *experience effects*.
 54 Personal experiences of macro-finance, labor-market, or political outcomes appear to be a
 55 strong determinant of individual attitudes and willingness to take risks in these areas in the
 56 long run. For example, prior experiences of stock market returns predict stock-market invest-
 57 ment, prior experiences with IPOs predict future participation in IPOs, and prior experiences
 58 in the bond market predict future bond investment.³ Evidence in line with experience ef-
 59 fects is also found among college students who graduate in recessions, among consumers who
 60 live through economic booms or busts, and in the political realm in terms of the long-term
 61 consequences of living under communism, its surveillance system, and propaganda.⁴ Most
 62 closely related, Malmendier and Nagel (2016) show that life-time experiences of inflation sig-
 63 nificantly affect beliefs about future inflation, and that this channel explains the substantial
 64 disagreement between young and old individuals in periods of highly volatile inflation, such
 65 as the 1970s.

66 The monetary-policy setting in this paper is different. FOMC members are presumably
 67 highly educated and well informed about macroeconomic history, and monetary policy is
 68 generally considered a technocratic and model-driven area of economic policy. Experience

³ Cf. Vissing-Jorgensen (2003), Kaustia and Knüpfer (2008), Chiang, Hirshleifer, Qian, and Sherman (2011), Malmendier and Nagel (2011), and Strahilevitz, Odean, and Barber (2011). There is similar evidence for the housing market (Malmendier and Steiny 2017, Botsch and Malmendier 2016), and the insurance markets (Gallagher 2014).

⁴ Cf. Kahn (2010) and Oreopoulos, von Wachter, and Heisz (2012) for labor markets; Malmendier and Shen (2017) for consumption expenditures (controlling for financial constraints and wealth); and Alesina and Fuchs-Schündeln (2007), Lichter, Löffler, and Siegloch (2016), Fuchs-Schuendeln and Schuendeln (2015), or Laudenbach, Malmendier, and Niessen-Ruenzi (2018) for political experiences. Experience effects might also be at work in the “female socialization” of congress persons when they have daughters (Washington 2008).

69 effects may thus seem much less plausible than for the consumers and individual investors
70 examined in earlier studies. Nevertheless we find a robust influence of personal experiences
71 on FOMC members’ stated beliefs and decisions, consistent with views in the media about
72 generational origins of ‘hawkishness.’

73 This analysis ties directly to the findings of Malmendier and Nagel (2016) on inflation
74 experiences predicting beliefs about future inflation in the Michigan Survey of Consumers
75 (MSC). We apply their model of experience-based learning, which maps each member’s life-
76 time history of experienced inflation, with more weight given to recent experiences than those
77 early in life, into regression estimates of long-run mean and persistence of inflation. Based on
78 these parameter estimates, we then construct an experience-based inflation forecast for each
79 FOMC member at each point in time. These forecasts differ not only across cohorts in each
80 period, but also change within each cohort over time as beliefs are updated in response to
81 new inflation realizations. Hence, the identifying variation that we rely on to explain FOMC
82 member behavior is not spanned by fixed age, time, and cohort effects.⁵

83 As our first outcome variable, we analyze the inflation forecasts FOMC members submit
84 for the semi-annual Monetary Policy Reports (MPRs) to Congress. The individual fore-
85 casts are made available with a 10-year lag, starting in 1992. We relate each member’s
86 experience-based forecast at a given time directly to their MPR forecast at that time. De-
87 spite the limited sample period, our estimation provides robust evidence that members put
88 a substantial weight—37% or more, depending on the specification—on their experience-
89 based forecasts. Hence, differences in members’ lifetime experiences of inflation explain an
90 economically significant portion of the differences in their inflation forecasts.

91 This first finding helps explain the puzzling time-series evidence in Romer and Romer
92 (2008) that the central tendency of FOMC members’ inflation expectations often deviates

⁵ We also explored heterogeneity in output-gap experiences as a possible determinant of FOMC member disagreement about policy. Using unemployment as a proxy for the output gap, we estimate a very small degree of cross-sectional heterogeneity in the resulting experienced-based forecasts. Unlike for inflation, the unemployment process parameter estimates remain similar when we vary the length of the unemployment histories, e. g., for 20 versus 40 years of past data. In other words, the empirical properties of the unemployment time series preclude experience-based disagreement about unemployment to play an economically significant role in explaining heterogeneity in voting and speeches.

93 from the Federal Reserve staff’s Greenbook forecast, even though their deviations *reduce*
94 forecast accuracy. Our results imply that, to a large extent, the deviations are explained
95 by reliance on personal inflation experiences. Hence, while our research design emphasizes
96 between-member differences in experiences and outcomes, the estimates are also useful to
97 understand why FOMC members as a group deviate from objective benchmarks.

98 Next, we turn to differences in decision-making. We study FOMC votes, which allow
99 us to study clearly defined policy decisions over a sample period spanning several decades,
100 from March 1951 to January 2014. The FOMC meets at least four (and typically eight)
101 times per year. To analyze whether FOMC members’ voting decisions are influenced by the
102 inflation experiences they have accumulated during their lifetimes, we have to map their
103 experience-based forecasts from the first step of our analysis into a voting decision. For this
104 second step, we link the experience-based inflation forecasts to the desired level of nominal
105 interest rates using a subjective version of the Taylor (1993) rule in which FOMC members
106 evaluate deviations from the inflation target in terms of their own experience-based inflation
107 forecasts. In addition, to control for potentially confounding effects, we allow FOMC members
108 to differ, based on their personal characteristics, in their weights on the inflation and output
109 stabilization objectives as well as in their views about the appropriate inflation and output
110 targets and the natural interest rate. We estimate a highly significant relationship between
111 inflation experiences and voting decisions. A one within-meeting standard-deviation increase
112 in the experience-based inflation forecast raises the probability of a hawkish dissent by about
113 one third, and it lowers the probability of a dovish dissent also by about one third, relative
114 to the unconditional dissent probabilities.

115 The voting outcome is a clear indication that experiences significantly affect FOMC mem-
116 bers’ behavior; but it is also coarse, given the well-known reluctance of FOMC members, in
117 particular governors, to formally cast a dissenting vote. To tease out more subtle differences
118 in desired interest rate changes, we analyze, in a third step, the opinions FOMC members
119 express in their speeches. We construct a data set of all “Speeches and Statements” from the

120 Federal Reserve Archival System for Economic Research (FRASER) as well as hand-collected
 121 speeches from the websites of the regional Federal Reserve Banks (FRBs). We classify the
 122 language in these speeches and discussions as hawkish or dovish using the automated search-
 123 and-counts-approach of Apel and Grimaldi (2014). Applied to our sample, their *Net Index* of
 124 hawkishness reveals that FOMC members use a significantly more hawkish tone when their
 125 lifetime experiences imply a higher experience-based inflation forecast.

126 Finally, we turn from the cross-sectional analysis of individual behavior to the time series
 127 of the federal funds rate target. Traditionally, the FOMC implements monetary policy by
 128 setting a target for the federal funds rate, i. e., the interest rate at which banks lend overnight
 129 to each other. Within the forward-looking Taylor rule framework, we show that the federal
 130 funds rate target is tilted away from the Federal Reserve Board staff’s Greenbook forecast of
 131 inflation and towards the experience-based inflation forecasts of the voting members present
 132 at the FOMC meeting.⁶ Moreover, the strength of the tilt that we estimate here is broadly
 133 consistent with the tilt away from the staff forecast and towards personal experiences in our
 134 initial analysis of FOMC member inflation forecasts. We quantify the implied effect in a
 135 rough calculation that abstracts from the equilibrium consequences of a different interest-
 136 rate path. We find that, relying only on the staff forecast and *not* on members’ own inflation
 137 experiences, a counterfactual FOMC would have chosen a similar interest-rate path in the
 138 late 1980s and 1990s, but 50 to 100 basis points lower in the 2000s.

139 The four sets of empirical results can be parsimoniously explained by a model of experience
 140 effects, in which personal inflation experiences affect subjective beliefs about future inflation.
 141 Under such a model of *experience-based learning*, individuals overweight realizations of past
 142 inflation that they have experienced in their lives so far, consistent with earlier evidence
 143 on experience effects in individual inflation expectations (Malmendier and Nagel 2016). In

⁶ The Federal Reserve staff tends to make forecasts collectively rather than individually. Staff forecasts are therefore less likely to exhibit experience effects. According to Reifschneider, Stockton, and Wilcox (1997), the Fed forecasting procedure starts with a “coordinator” providing the participants with the key assumptions. Given these assumptions, the participating economists produce projections for their sectors. These forecasts are then assembled by the coordinator into projections for aggregate output, income, inflation, and interest rates, and then relayed back to the sector economists, who may further adjust the forecast for their sector.

144 addition, there might be a preference-based link between inflation experiences and aversion
 145 to inflation. A preference-based explanation does not suffice, though, to explain all of our
 146 findings for at least two reasons. First, the preference channel does not easily explain the
 147 link between inflation experiences and FOMC members' stated beliefs in their MPR forecasts.
 148 While it is possible that the MPR forecasts reflect members' inflation preferences rather than
 149 their beliefs, this is not the standard interpretation of these data (e.g., Romer and Romer
 150 2008). Second, it is not clear why experience-based forecasts generated by an adaptive
 151 learning rule, which our empirical analysis employs, would be a good way to summarize
 152 FOMC members' inflation preferences. Ultimately, pinning down the precise channel is not
 153 essential for the validity of our findings. Irrespective of the preferred explanation, our findings
 154 show that heterogeneity in lifetime experiences has significant explanatory power for the
 155 heterogeneity in monetary-policy views and for the decisions of the experts on the FOMC.

156 Our findings add to a growing literature that studies experience-related heterogeneity
 157 in economic decisions and macroeconomic expectations. Relative to the macro and finance
 158 literature on experience effects cited above, our analysis stands out in that it is the first paper
 159 to provide evidence of personal experiences affecting policy experts.⁷

160 This provides a new perspective on macroeconomic models in which monetary policy
 161 makers learn about the economy's stochastic processes (see Sargent 1999, Cho, Williams, and
 162 Sargent 2002, and Primiceri 2006, among others). A common assumption in these models is
 163 that policy makers update their beliefs (e.g., about the natural rate of unemployment, the
 164 slope of the Philips curve, or inflation persistence) using a constant-gain updating scheme that
 165 leads to perpetual learning with exponential downweighting of data in the past. However,
 166 it is unclear why policymakers would update beliefs with a constant gain. One (standard)
 167 explanation is structural change in the stochastic processes agents learn about. Our findings
 168 point to an alternative: Data in the distant past carries low weight because policy makers

⁷ While there is no existing evidence yet for policy experts, there are empirical findings that professional agents exhibit experience effects, e.g., mutual fund managers who experienced the stock market boom of the 1990s (Greenwood and Nagel 2009), CEOs who grew up in the Great Depression (Malmendier and Tate 2005, Malmendier, Tate, and Yan 2011), and even lenders in 18th century Amsterdam (Koudijs and Voth 2016).

169 overweight personal experience relative to objective historical data.⁸

170 In addition, our results highlight sources of belief heterogeneity that the standard rep-
171 resentative policy-maker approach in the literature would miss: the age distribution of the
172 policy committee, as well as the differences in such age effects over time. As such, the ev-
173 idence in this paper sheds light on the likely consequences of choosing specific individuals
174 as central bankers—a topic much discussed in practice. Romer and Romer (2004) provide
175 narrative evidence that the Federal Reserve chairs are heterogeneous in their views about
176 the workings of the macroeconomy and the potency of monetary policy. They argue that
177 this heterogeneity affects policy choices. Accordingly, Reis (2013) suggests that the choice of
178 a central banker shapes the effective objective function for the central bank. Our evidence
179 suggests that heterogeneity in macroeconomic experiences influence the beliefs that enter as
180 inputs into this objective function.

181 Our evidence on the role of inflation experiences also adds a new dimension to a prior
182 literature that links monetary policy decisions to the personal characteristics of FOMC mem-
183 bers. Chappell, Havrilesky, and McGregor (1993, 1995) and Chappell and McGregor (2000)
184 document that a number of characteristics, including the role of regional Federal Reserve
185 president versus Federal Reserve governor, are associated with differences in voting.⁹ While
186 this earlier literature views policy maker characteristics as determinants of their preferences
187 or incentives, our approach is motivated by a subjective beliefs channel. In support of this
188 channel, we show that lifetime experiences explain FOMC members’ stated beliefs about fu-
189 ture inflation. In this regard, our analysis also relates to the finding in Hansen, McMahon,
190 and Velasco (2014) that heterogeneity in private assessments of economic conditions plays
191 an important role in monetary policy committee decision-making. We highlight personal
192 experiences as one source of such disagreements.

193 Finally, our analysis of the tone in FOMC members’ speeches relates to the literature

⁸ In fact, Malmendier and Nagel (2016) show that the average experience-based belief of a group of individuals can be closely approximated by a constant-gain learning rule, and hence experience effects can provide an approximate “microfoundation” for constant-gain learning.

⁹ Harris, Levine, and Spencer (2011) find some of these effects are absent or different on the Bank of England Monetary Policy Committee.

194 on textual analysis in monetary policy. Apel and Grimaldi (2014) measure the tone of the
195 Swedish central bank minutes and use it to predict policy rate decisions. Numerous other
196 text-mining approaches have recently been employed, for example by Hansen and McMahon
197 (2016a, 2016b). We focus on how personal experiences explain tone differences across FOMC
198 members’ speeches outside their meetings.

199 The rest of the paper is organized as follows. In the next section, we lay out the method-
200 ology underlying our empirical approach and specify FOMC members’ learning rule. We
201 show that the resulting experience-based forecasts of inflation help predict the MPR inflation
202 forecasts of FOMC members. In Section 3, we map the experience-based inflation forecasts
203 into desired interest rates and show that they help explain dissenting votes. In Section 4,
204 we perform a similar analysis for FOMC members’ speeches. Section 5 relates the average
205 inflation experiences of all FOMC members at each meeting to the federal funds rate decision,
206 and Section 6 concludes.

207 2. Inflation Experiences and Inflation Forecasts

208 We start our analysis by examining the stated inflation expectations of FOMC members in
209 the Semiannual Monetary Policy Report (MPR). This data set provides us with an inflation
210 forecast for each individual FOMC member twice a year during the period from 1992 to 2004.
211 We test whether we can detect experience-related heterogeneity in inflation expectations,
212 even among the highly educated and professionally trained individuals on the FOMC: Does
213 their personal lifetime experience of more or less inflationary environments affect their stated
214 beliefs about future inflation? Do they attach higher weights to past realizations of inflation
215 if they happen to have personally lived through those times?

216 2.1. *Learning from Experience*

217 Experience-based learning is a variant of adaptive learning where economic agents have a
218 perceived law of motion for the variable they want to forecast, which may be a simple ap-

219 proximation of some unknown true law of motion. The agents estimate the parameters of this
 220 law of motion based on observed data and then use the estimated model to construct fore-
 221 casts. As new observations arrive, they update the parameter estimates and forecasts. (See,
 222 e.g., Bray 1982, Marcet and Sargent 1989, Sargent 1993, and Evans and Honkapohja 2001.)
 223 The key modification of the standard approach that introduces learning from experience is
 224 that we allow the learning gain, i.e., the strength of updating in response to surprise infla-
 225 tion, to depend on age. Young individuals react more strongly to an inflation surprise than
 226 older individuals who already have accumulated a longer data set of lifetime observations.
 227 As a result, experience-based forecasts at a given point in time are heterogeneous by age (or,
 228 equivalently, across cohorts). Moreover, since individuals update their beliefs in response to
 229 new observations, experience-based forecasts vary within person, and hence within cohort.
 230 There are no fixed cohort effects.

231 We utilize the learning-from-experience model of Malmendier and Nagel (2016) to gener-
 232 ate FOMC members' experience-based inflation forecasts based on their experienced inflation
 233 histories, which we then compare with FOMC members' actual inflation forecasts. In the
 234 learning-from-experience framework of Malmendier and Nagel (2016), individual consumers
 235 perceive inflation as an AR(1) process, and use data on experienced inflation to estimate the
 236 AR(1) parameters and construct their forecasts. As they experience new inflation realiza-
 237 tions, they update the AR(1) parameters and revise their forecasts. Intuitively, the AR(1)
 238 assumption implies that experienced inflation is summarized in terms of long-run mean and
 239 the persistence of shocks.¹⁰

240 We modify this framework in a minor way to address seasonality. Especially towards
 241 the end of our sample period, the seasonal component of inflation accounts for a substan-

¹⁰ We focus on univariate models of inflation since the existing empirical evidence on inflation forecasting, as reviewed in Stock and Watson (2009), suggests that multivariate models, e.g., Phillips curve forecast models that also include output variables, do not outperform univariate models. Moreover, there exist standard models that are consistent with a lack of incremental forecastability based on output. In the version of the New Keynesian model reviewed by Clarida, Gali, and Gertler (1999), output does not have incremental information about future inflation over and above current inflation. Given this evidence, it is not unreasonable for FOMC members to form views about future inflation based on univariate properties of experienced inflation.

242 tial share of its variance,¹¹ and we expect experts to be aware of the pattern. While the
 243 seasonality adjustment is not material for the results, it avoids seasonality-induced volatility
 244 in experienced-based forecasts in the later part of the sample, which plays a bigger role in
 245 the analysis here than in the Malmendier and Nagel (2016) sample that reached back to the
 246 1950s. Hence, we model their perceived law of motion as a mixed seasonal AR(1) process,

$$\pi_{t+1} = \alpha + \phi_1 \pi_t + \phi_4 \pi_{t-3} - \phi_5 \pi_{t-4} + \eta_{t+1}, \quad (1)$$

247 where the $t - 3$ and $t - 4$ lags capture a four-quarter seasonal pattern.¹²

248 FOMC members use least-squares to estimate the vector b of parameters in (1), $b \equiv$
 249 $(\alpha, \phi_1, \phi_4, \phi_5)'$. Expressed recursively, the least-squares estimates of an FOMC member born
 250 in quarter s are updated every quarter as follows:

$$b_{t,s} = b_{t-1,s} + \gamma_{t,s} R_{t,s}^{-1} h_{t-1} (\pi_t - b'_{t-1,s} h_{t-1}), \quad (2)$$

$$R_{t,s} = R_{t-1,s} + \gamma_{t,s} (h_{t-1} h'_{t-1} - R_{t-1,s}), \quad (3)$$

251 The vector $h_t \equiv (1, \pi_t, \pi_{t-3}, \pi_{t-4})'$ collects the observed inflation inputs, and $R_{t,s}$ is the
 252 recursively updated moment matrix for h_t . Based on the newly revised estimates of $b_{t,s}$,
 253 members of cohort s form their subjective expectation of next period inflation as

$$\pi_{j,t+1|t}^e = b'_{t,s} h_t. \quad (4)$$

¹¹ Bryan and Cecchetti (1995) show that the relative variance share of the seasonal component rose as inflation became more stable after 1982, and Gospodinov and Wei (2015) note a strong seasonal component since the financial crisis in 2008.

¹² With the restriction $\phi_5 = \phi_4 \phi_1$, this is a standard $ARIMA(1, 0, 0) \times (1, 0, 0)_4$ model, and a special case of the seasonal ARIMA model discussed, e.g., in Box, Jenkins, Reinsel, and Ljung (2015). We do not impose this restriction in the learning algorithm (which does not affect consistency), so that the belief updating formulas still retain a recursive least-squares form. Inclusion of seasonal dummies, a potential alternative method, would not properly capture the stochastic seasonality in the CPI series and, for example, its consequences for the autocorrelation of the series. Another potential alternative would be to use seasonally-adjusted data. However, seasonally-adjusted data is available only back to 1947. Moreover, standard seasonally-adjusted data suffers from a potential look-ahead bias as the seasonal adjustment factors applied to the CPI time-series are estimated and retroactively updated by the Bureau of Labor Statistics using ex-post realized data over the full sample. The unrevised vintages would be available from the ALFRED database, but only starting in 1972, which is much too short for our purposes.

254 The sequence of gains $\gamma_{t,s}$ in (2) and (3) determines how strongly cohort s revises the
 255 parameter estimates when faced with an inflation surprise, $\pi_t - b'_{t-1,s} h_{t-1}$, at time t . Following
 256 Malmendier and Nagel (2016), we specify the gain as

$$\gamma_{t,s} = \begin{cases} \frac{\theta}{t-s} & \text{if } t-s \geq \theta, \\ 1 & \text{if } t-s < \theta. \end{cases} \quad (5)$$

257 That is, while the recursive least-squares set up follows standard implementations of adaptive
 258 learning (cf.; Evans and Honkapohja 2001), the gain specification is different. In standard
 259 adaptive-learning models with decreasing gain, the gain is decreasing in the total size of
 260 available historical data and is the same for everybody. In contrast, the gain in (5) is de-
 261 creasing in the size $t-s$ of the *lifetime* data of cohort s at time t . As a consequence, younger
 262 individuals have a higher gain and react more strongly to an inflation surprise than older
 263 individuals. Hence, the variation in gains is the source of between-cohort heterogeneity in
 264 inflation forecasts, as well as within-cohort heterogeneity (over time), in our framework.

265 The parameter $\theta > 0$ is constant and determines how much weight the forecaster puts
 266 on recent data versus data in the distant past. For example, $\theta = 1$ implies equal weighting
 267 of recent data and data earlier in life, while $\theta > 1$ implies that recent data receives more
 268 weight than early experiences. Throughout the paper, we conduct our baseline estimation by
 269 setting $\theta = 3.044$, which is the value Malmendier and Nagel (2016) estimate from the data on
 270 inflation expectations in the *Michigan Survey of Consumers* (MSC). This value of θ implies
 271 that weights on past observations decline a little faster than linearly, going back from the
 272 current period to a weight of zero at birth.¹³ By using this value of θ , we impose consistency
 273 with earlier evidence and tie our hands with regards to this parameter, rather than picking θ
 274 to best fit the FOMC member data. We test the robustness of our results to using a range of

¹³ We find that the inflation forecast of an adult is not sensitive to the precise starting point of the experience accumulation for a fairly wide range of values around $\theta = 3.044$. In Malmendier and Nagel (2016), we stretch and compress the weighting function to include years before birth into the experience accumulation or start later (e.g., at the age of 18) without much effect, also because the initial years in an adult's lifetime carry relatively little weight. In Appendix J we redo our main results in this paper with a different starting point.

values around this point estimate. We also reestimate θ on the sample of college graduates in the MSC, which makes it plausibly more representative of the typical FOMC member. Our results are unaffected when we use the resulting parameter estimate of $\theta = 3.334$.

For a given θ , we calculate the experience-based inflation forecast $\pi_{j,t+1|t}^e$ of member j at time t based on inflation data since j 's birth year. Our data source is the quarterly CPI series from Shiller (2005) that goes back to 1871Q1.¹⁴ We measure inflation rates as annualized quarterly changes in the log CPI. As in Malmendier and Nagel (2016), we iterate on the perceived law of motion (1) at each cohort's quarter- t parameter estimates to construct experience-based forecasts of the average inflation rate over the relevant horizon (which is four quarters in most of our applications, unless otherwise noted).

In Appendix A, we illustrate the resulting heterogeneity in expectations and learning-from-experience dynamics in more details. There, we plot how the perceived persistence and long-run mean of inflation evolve over time, separately for different age groups. The graphs highlight the two key features of experience-based expectations formation. First, since individuals update their beliefs in response to new inflation observations, experience-based forecasts vary within person (and hence also within cohort) over time. Second, since younger individuals have a shorter life-time data set and place a higher weight on recent inflation surprises than older individuals, expectations are heterogeneous by age, but in a time-varying way. As a consequence, a linear combination of time, age, or cohort fixed effects cannot absorb experience-based expectations heterogeneity. For this reason, our approach to estimating experience effects is not subject to the age-time-cohort collinearity problem that plagues methods that are based on estimation of cohort fixed effects. (See Malmendier and Nagel 2016 for a more general discussion of this point.)

¹⁴ See the updated long-term stock, bond, interest rate and consumption data at <http://www.econ.yale.edu/~shiller/data.htm>. Shiller's inflation rate series is based on the CPI-U (Consumer Price Index-All Urban Consumers) published by the U.S. Bureau of Labor Statistics from 1913 onwards, and on the Warren-Pearson wholesale price index before 1913. Since the earlier price index is focused on commodities, it is more volatile. Appendix H replicates key parts of our analyses excluding pre-1913 data, i.e., restricting the sample to FOMC members born after 1913. The results on voting remain essentially unchanged, as do the results on speech tone; the other two sets of analyses do not use pre-1913 data.

298 *2.2. Inflation Forecast Data*

299 We obtain individual inflation forecasts of FOMC members from the Semiannual MPR.¹⁵
300 Twice a year, in February and July, the FOMC submits an MPR to Congress, which contains
301 the FOMC members' inflation forecasts. In February, the forecasts concern the time period
302 from Q4 of the previous year to Q4 of the current year. In July, two sets of forecasts are
303 included in the report: one for Q4 of the previous year to Q4 of the current year, and another
304 one for Q4 of the current year to Q4 in the next year.

305 We supplement the individual FOMC members' forecasts with forecasts in the "Green-
306 books" that are prepared by Federal Reserve staff about a week prior to each FOMC meet-
307 ing.¹⁶ We use the Greenbooks for the February and July FOMC meeting and match them
308 with the member forecasts from the MPR. As Romer and Romer (2008) discuss, the FOMC
309 members have access to the Greenbook forecasts when they prepare their forecasts before
310 the FOMC meeting that precedes the MPR. They also have an opportunity to revise their
311 forecast after seeing other members' economic views and staff's summary of the other mem-
312 bers' forecasts. Romer and Romer (2008) show that the central tendency of FOMC members'
313 forecasts deviates from the staff forecast in the Greenbooks, and that this deviation from the
314 staff forecasts reduces the forecast accuracy.

315 Our objective here is to test whether the deviations from staff forecasts reflect the influence
316 of their personal inflation experiences. For this purpose, we extract the individual inflation
317 forecasts contained in the MPRs (rather than the central tendency that Romer and Romer
318 (2008) analyze) to construct a panel data set. The individual FOMC members' forecasts
319 become available only with a 10-year lag, and the earliest ones available are from 1992.
320 Hence, our sample runs from 1992 to 2004, covering 26 FOMC meetings. This data set of
321 individual forecasts is introduced and described in Romer (2010).

¹⁵ www.philadelphiafed.org/research-and-data/real-time-center/monetary-policy-projection

¹⁶ www.federalreserve.gov/monetarypolicy/fomc_historical.htm

322 2.3. *Econometric specification*

323 Our estimating equation relates FOMC members' deviation from the staff forecasts to their
 324 personal inflation experiences. We start from modelling FOMC member j 's forecast at time
 325 t , $\tilde{\pi}_{j,t+1|t}$, as a weighted average of j 's experience-based forecast $\pi_{j,t+1|t}^e$ and the staff forecast
 326 $\tilde{\pi}_{t+1|t}$ reported in the most recent Greenbook:

$$\tilde{\pi}_{j,t+1|t} = \phi \pi_{j,t+1|t}^e + (1 - \phi) \tilde{\pi}_{t+1|t}. \quad (6)$$

327 Subtracting $\tilde{\pi}_{t+1|t}$ on both sides, we obtain our estimating equation

$$\tilde{\pi}_{j,t+1|t} - \tilde{\pi}_{t+1|t} = a + \phi(\pi_{j,t+1|t}^e - \tilde{\pi}_{t+1|t}) + \varepsilon_t, \quad (7)$$

328 where we include a constant and a residual to account for other unobserved variables that
 329 could influence the FOMC members' forecasts.

330 One complication when estimating equation (7) is that the forecasted inflation variable
 331 switched in February 2000 from the consumer price index (CPI-U) to the price index for
 332 personal consumption expenditure (PCE). Our construction of $\pi_{j,t+1|t}^e$ is based on the history
 333 of the CPI, and from 2000 to the end of our sample in 2004, the average CPI inflation rate
 334 was about 0.40% higher than the PCE inflation rate. We take two approaches to address
 335 this discrepancy. First, we simply re-calculate $\tilde{\pi}_{j,t+1|t}$ post-1999 by adding the difference in
 336 CPI and PCE inflation rates over the 12 months prior to the meeting to the FOMC member
 337 forecast. Second, we estimate a version of equation (7) with time fixed effects. As long
 338 as views about the CPI-PCE discrepancy are similar among FOMC members, the effect of
 339 the discrepancy will be absorbed by the time fixed effects. In this case, the coefficient ϕ is
 340 identified purely from (time-varying) cross-sectional differences between FOMC members in
 341 their forecasts and their inflation experiences.

342 Another complication is that forecast horizons vary. To match the forecasts in the Febru-
 343 ary MPR (from the end of the previous-year Q4 to the end of the current-year Q4), we con-

344 struct the experience-based forecast using data until the end of previous-year Q4 and then
345 iterate to construct a four-quarter-ahead forecast. To match the same (previous-year Q4 to
346 current-year Q4) forecast in the July MPR, we average the two-quarter-ahead experience-
347 based forecast (from end of Q2 to end of current-year Q4) and the realized inflation over the
348 past two quarters (from end of last-year Q4 to end of Q2). To match the next-year forecast
349 (from current-year Q4 to next-year Q4) in the July MPR, we subtract the same two-quarter-
350 ahead experience-based forecast from the six-quarter-ahead experience-based forecast (from
351 end of Q2 this year to end of Q4 next year).

352 Panel A in Table 1 reports summary statistics for the dependent and explanatory vari-
353 ables in (7), separately for each forecast horizon. The mean column shows that the FOMC
354 members’ actual MPR forecast exceeds the Greenbook forecast on average over the 1992-2004
355 sample period by between 0.17 to 0.32 percentage points. Interestingly, the same pattern,
356 but at a greater magnitude, holds for FOMC members’ experience-based forecast. This is
357 a first hint that partial reliance on personal inflation experiences could be the reason why
358 FOMC members deviate from the Greenbook forecast. The standard deviation column shows
359 that actual and experience-based forecast deviations from the Greenbook have a standard
360 deviation of around 0.50 percentage points for the February MPRs, and around 0.40 to 1.10
361 percentage points for the two July MPR forecasts. These means and standard deviations
362 are large relative to the magnitudes of a typical federal-funds-rate target change of 0.25
363 percentage points that the FOMC might consider in a meeting.

364 The table also reports the within-member standard deviation of the actual and the
365 experience-based forecast. This statistic reveals that member fixed effects do not absorb
366 much of the variation. The much smaller within-meeting standard deviation in the next col-
367 umn indicates that much of the total standard deviation reflects time-series variation of the
368 average members’ deviation from the Greenbook forecast, rather than cross-sectional disper-
369 sion between members in a given FOMC meeting. This is a consequence of the fact that the
370 sample period for these forecast data features relatively low and stable inflation rates. As
371 a consequence, the heterogeneity in FOMC members’ experience-based forecasts is limited.

Table 1

Influence of FOMC Members' Inflation Experiences on their Inflation Forecasts

Panel A presents summary statistics for the dependent and explanatory variables in the estimations shown in Panel B. MPR fcst. - staff fcst. is the difference between i) FOMC members' stated inflation projection from the MPR and ii) the most recent Fed Staff's inflation forecast from the Greenbook prior to the February or July FOMC meeting. In February, the horizon of the members' MPR forecasts is over the four quarters until the end of the current year. In July, two horizons are available: four quarters until the end of the current year and the four quarters during next year. From February 2000 on, we add the difference between CPI and PCE inflation rate to each FOMC member forecast. The sample period runs from the first half of 1992 to the second half of 2004. In Panel B, MPR fcst. - staff fcst. is the dependent variable. The explanatory variable is the difference between the i) experience-based forecast $\pi_{j,t+1|t}^e$ for each FOMC member at each meeting, and ii) the Fed staff's inflation forecast. We calculate $\pi_{j,t+1|t}^e$ for each member at each meeting by recursively estimating a mixed seasonal AR(1) model using the member's lifetime history of inflation, as described in Section 2.1 (with $\theta = 3.044$). In parentheses we report the standard error based on clustering as described in the table.

Panel A: Summary statistics				
	Mean	S.D.	Within-Member S.D.	Within-Meeting S.D.
February MPR: Current-year forecast				
MPR fcst. - staff fcst.	0.26%	0.53%	0.44%	0.21%
Exp.-based fcst. - staff fcst.	0.66%	0.53%	0.43%	0.03%
July MPR: Current-year forecast				
MPR fcst. - staff fcst.	0.17%	0.44%	0.39%	0.18%
Exp.-based fcst. - staff fcst.	0.66%	1.09%	0.78%	0.03%
July MPR: Next-year forecast				
MPR fcst. - staff fcst.	0.32%	0.61%	0.50%	0.32%
Exp.-based fcst. - staff fcst.	1.16%	0.75%	0.61%	0.06%
Panel B: OLS regression				
	(i)	(ii)	(iii)	(iv)
Exp.-based fcst. - staff fcst.	0.37 (0.10)	0.40 (0.12)	0.81 (0.37)	0.82 (0.39)
Member \times fcst. horizon FE	No	Yes	No	No
Member FE	No	No	No	Yes
Meeting \times fcst. horizon FE	No	No	Yes	Yes
Clustered s.e.	Member and Meeting	Member and Meeting	Member	Member
Observations	383	383	383	383
Adjusted R^2	34.7%	41.0%	77.7%	81.5%

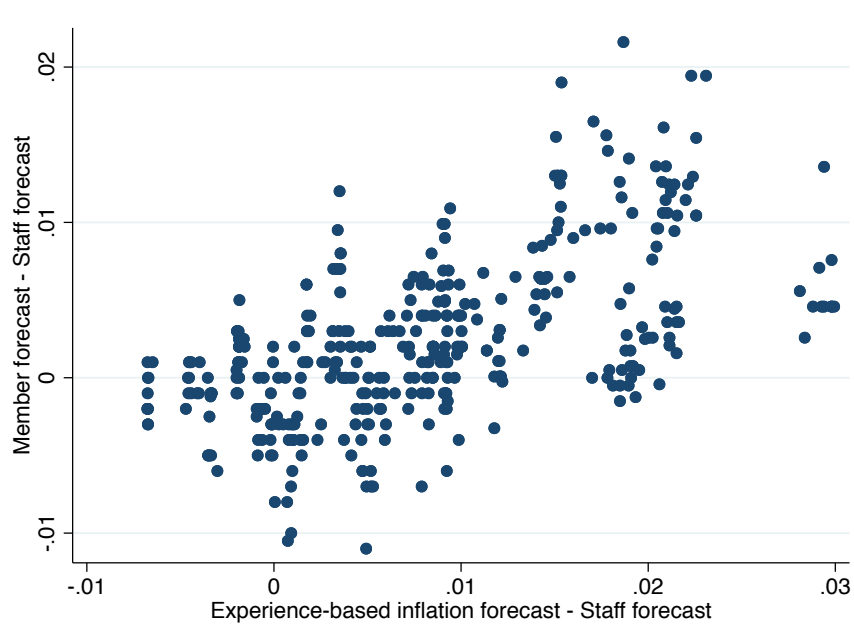


Figure 1
Relationship Between FOMC Member Inflation Forecasts in the MPR and their
Experienced-Based Inflation Forecasts

Our analysis of voting and speeches, which we turn to below, will instead cover the 1970s in its sample period, which bring in substantially greater dispersions in experience-based forecasts.

2.4. Estimation Results

The estimation results are in Panel B in Table 1. The panel reports the OLS estimates of the weight ϕ on the experience-based forecasts, relative to the staff forecasts, in equation (7). We find that the experience-based inflation forecast plays a significant role in explaining the variation of members' reported inflation forecasts. The specification in column (i) uses the total variation without fixed effects. The resulting estimate of 0.37 (s.e. 0.10) implies that FOMC members put about 37% weight on their experience-based forecast and 63% on the staff forecast. Figure 1 presents the scatter plot corresponding to this regression, comparing individual members' actual inflation forecast $\tilde{\pi}_{j,t+1|t}$ to their experience-based forecast $\pi_{j,t+1|t}^e$. The scatter plot illustrates the high R^2 of 34.7% in this regression.

385 The estimate of ϕ remains very similar when we add member \times forecast-horizon fixed
 386 effects, i. e., FOMC member dummies interacted with dummies for the three types of forecast
 387 in Panel A. As shown in column (ii), the coefficient estimate is now 0.40 (s.e. 0.12). This
 388 stability of the estimate implies that the results are not driven by cohort fixed effects (which
 389 are absorbed by the member fixed effects in this regression). Experience-based learners update
 390 their beliefs over time, and this time-variation in expectations is not captured by cohort fixed
 391 effects. Instead, the estimate is identified from variation in cross-sectional differences over
 392 time. The estimates in column (ii) also show that any alternative explanation based on fixed
 393 member characteristics (e.g., educational background) cannot explain the results.¹⁷

394 The estimates so far largely reflect the time-series comovement of the average FOMC
 395 member's forecasts and experiences at a given meeting. Periods in which the average FOMC
 396 member submits an inflation forecast above the Greenbook forecast also tend to be periods
 397 in which the average FOMC member's experience-based forecast is above the Greenbook
 398 forecast. It is interesting that the time-series variation in these variables lines up so closely,
 399 as evident also from Figure 1. To rule out that that some omitted time-series factor is
 400 driving this co-movement, it is useful to focus on within-meeting variation. For this reason,
 401 we include meeting \times forecast-horizon fixed effects in the estimations in columns (iii) and (iv).
 402 The magnitude of the ϕ estimate roughly doubles. However, only a small amount of variation
 403 remains after including this extensive set of fixed effects, and so the standard errors become
 404 fairly large. As a consequence, we cannot reject that the estimates are unchanged compared
 405 to those in column (i) and (ii). Nevertheless, even though pinning down the precise magnitude
 406 of the effect is difficult, it is reassuring that the results are qualitatively similar and remain
 407 significant when we identify ϕ only from within-meeting variation.

408 Finally, we note that the estimates in column (iv) also include member fixed effects, on
 409 top of the meeting \times forecast-horizon fixed effects. This estimation illustrates the point made
 410 earlier that the heterogeneity in experience-based inflation forecasts is not fully absorbed by

¹⁷ In addition, in Appendix K we show that the experience effects on inflation forecasts, and also on voting and speeches, have similar strength among FOMC members with an economics PhD and among those without.

time and member fixed effects. This dimension of identification constitutes the key difference between our approach and methods that try to capture experience effects through cohort fixed effects (which would be absorbed by the member fixed effects in column (iv)).

We conclude that the estimates are consistent with the view that heterogeneity in lifetime experiences of inflation results in significant heterogeneity in FOMC members' beliefs about future inflation. In terms of magnitude, while the focus on within-meeting variation in columns (iii) and (iv) is useful to achieve identification, independent of any correlated omitted time-series variables, the relevant variation for the assessment of experience effects and for counterfactual exercises is the total variation plotted in Figure 1, including the large between-meeting component. For example, to predict the policy stance of the committee, one may want to know by how much experience-based learning could shift the average member's inflation expectation away from the Greenbook forecast.

The large economic effect of personal inflation histories on FOMC members' stated beliefs has a similar order of magnitude as the effect estimated in the MSC. Among households surveyed in the MSC, Malmendier and Nagel (2016) find that that survey respondents put a weight of 0.67 on their experience-based forecasts. Considering the estimation uncertainty, it is difficult to make a precise comparison, but broadly, the weight put on personal experiences when forming inflation expectations appears quite similar across FOMC members and the households surveyed in the MSC.

In terms of interpretation, one potential concern specific to the FOMC setting is that strategic considerations might affect the forecasts stated in the MPR, including the desire to appear consistent or to send a message. This concern is somewhat muted because *individual* forecasts are actually not revealed in the MPR; they are made public only with a 10-year lag. The focus of public attention is usually on the published summary measures, especially the central tendency of the distribution of member forecasts. Also, as always with data on reported beliefs, it is important to keep in mind that it may not be possible to cleanly separate beliefs from preferences. Nevertheless, a direct effect of inflation experienced on beliefs about future inflation provides the most straightforward explanation of these results.

3. Inflation Experiences and Voting

Our first finding that FOMC members put substantial weights on their personal inflation experiences when forming inflation expectations raises the possibility that differences in experiences also give rise to differences in FOMC members’ monetary policy stance. To find out, we examine how FOMC members’ voting records relate to their inflation experiences. This analysis allows us to turn to actual monetary-policy decisions, and also to considerably expand the sample period backwards in time, compared to the relatively short sample period of MPR inflation expectations.

3.1. Policy Rule

In order to isolate the effects of inflation experiences on FOMC members’ monetary-policy stance, we need a framework that allows us to map their beliefs about future inflation into their monetary-policy views. Such a framework should also allow for other sources of heterogeneity in policy preferences and incentives that could affect members’ policy views.

We model monetary policy makers as following, explicitly or implicitly, an interest-rate rule that pins down their desired interest rates. We use the Taylor (1993) rule as a starting point, and augment it to allow for heterogeneity.

The standard Taylor rule implies a nominal interest rate

$$i_t^* = r + \pi^* + \lambda(\pi_t - \pi^*) + \gamma(y_t - y^*) \quad \text{with } \lambda > 0, \gamma > 0, \quad (8)$$

where π_t is the inflation rate, π^* is the inflation target (assumed to be 2 percent by Taylor), y_t denotes output, y^* is potential output, and r is the “natural” real interest rate consistent with an output gap $y_t - y^*$ of zero. Orphanides (2003) shows that this rule explains well the evolution of the Federal Reserve’s policy rate (federal funds rate) all the way back to the 1950s, with the exception of a few years in the early 1980s during the “Volcker disinflation.” This does not mean that the FOMC explicitly followed such a rule; but its policy decisions are well described by this rule.

463 In forward-looking versions of the Taylor rule (see, e.g., Clarida, Galí, and Gertler 1999),
 464 deviations from the inflation target are evaluated in terms of expected values instead of the
 465 realization π_t . Orphanides (2001, 2003) finds that a forward-looking Taylor rule fits the federal
 466 funds rate better than one based on realized data. We introduce such a forward-looking
 467 element into the rule, but with the twist that it reflects each individual FOMC member's
 468 experience-based inflation expectations, $\pi_{j,t+1|t}^e$.¹⁸ In addition, to control for potentially
 469 confounding heterogeneity, we allow preferences for input versus output stabilization, reflected
 470 in the weights λ , γ , as well as members' subjective views about the targets π^* , y^* , and the
 471 natural rate r , to depend on member characteristics. With these sources of heterogeneity
 472 incorporated into the policy rule, FOMC member j 's desired nominal interest rate at time t
 473 becomes

$$i_{j,t}^* = r_{j,t} + \pi_{j,t}^* + \lambda_{j,t}(\omega\pi_{j,t+1|t}^e + (1 - \omega)\pi_t - \pi_{j,t}^*) + \gamma_{j,t}(y_t - y_{j,t}^*), \quad \text{where } 0 \leq \omega \leq 1. \quad (9)$$

474 The parameter ω represents the weight that FOMC members put on their own subjective
 475 expectation $\pi_{j,t+1|t}^e$ rather than the objective information π_t .

476 To make the policy rule fully forward-looking, one could also replace π_t with objective
 477 forecasts such as those from the Greenbook. We will do this in the last part of our analysis
 478 where we look at the time-series of the federal funds rate and where subtleties of time dy-
 479 namics matter. But the Greenbook forecasts are available only for a much shorter sample
 480 period. For our analysis of voting and speeches, we therefore stick to realized inflation. As
 481 we will show now, in these analyses, we identify experience effects from cross-sectional het-
 482 erogeneity and the common π_t component of the Taylor rule matters only to a very limited
 483 extent through interactions with control variables.

¹⁸ Through the lens of a macro model, one can interpret the heterogeneity in FOMC members' subjective expectations as a reflection of implicit differences in their subjective views about underlying structural parameters such as the central bank's inflation target, the persistence of cost-push shocks, and the slope of the Phillips curve. We describe this in more detail in Appendix B.

484 We specify the heterogeneity of FOMC members' Taylor rule parameters as follows:

$$\begin{aligned}
\lambda_{j,t} &= \lambda_0 + (x_{j,t} - \mu_x)' \lambda_1, & \gamma_{j,t} &= \gamma_0 + (x_{j,t} - \mu_x)' \gamma_1, \\
\pi_{j,t}^* &= \pi^* + (x_{j,t} - \mu_x)' \alpha_1, & y_{j,t}^* &= y^* + (x_{j,t} - \mu_x)' \alpha_2, \\
r_{j,t} &= r + (x_{j,t} - \mu_x)' \alpha_3,
\end{aligned} \tag{10}$$

485 where $x_{j,t}$ is a vector of characteristics of FOMC member j at time t with population mean
486 μ_x . After substituting these expressions into equation (9), we perform a first-order Taylor
487 approximation of $i_{j,t}$ as a function of $(\pi_{j,t+1|t}^e, x_{j,t}')$ around (π_t, μ_x') ; cf. Appendix C. We
488 obtain

$$i_{j,t}^* \approx a_t + \lambda_0 \omega \pi_{j,t+1|t}^e + \kappa' x_{j,t} + \pi_t x_{j,t}' \lambda_1 + (y_t - y^*) x_{j,t}' \gamma_1, \tag{11}$$

489 where a_t is a time fixed effect and κ is a vector of constants. We use this version of the
490 Taylor rule to derive individual desired interest rates and corresponding policy views, whether
491 expressed in voting decisions or speech tones.

492 3.2. Data on the FOMC Voting History

493 We study the FOMC voting history from March 1951 to January 2014. The starting point
494 is dictated by the Treasury-Federal Reserve Accord of 1951, with which the Federal Reserve
495 System regained its independence from the Department of Treasury after World War II.

496 The data comes from several sources. For meetings from January 1966 to December
497 1996, we use the data from Chappell, McGregor, and Vermilyea (2005). For meetings before
498 January 1966 and after January 1997, we collect the data directly from FOMC meeting state-
499 ments. Each statement reports all votes, typically followed by explanations of the dissenting
500 opinions, if any. We exclude eight dissents that cannot easily be classified as hawkish or
501 dovish.¹⁹ Four FOMC members were both regional Fed presidents and governors at different

¹⁹ Details on the construction of the voting data set are in Appendix D.

502 points during their career, and we account for their varying roles in our empirical analysis.

503 We collect biographical information for each FOMC member from the Federal Reserve
504 History Gateway²⁰ and the Who's Who database. The data includes the year and place of
505 birth, gender, the highest degree earned, the program they graduated from, the role served
506 in the Fed (board member or regional bank president), and the political party of the U.S
507 president who was in office at the time of the member's first appointment.

508 We use these data to construct the vector $x_{j,t}$ of FOMC members' characteristics that we
509 allow to influence the desired interest rate at meeting time t in equation (11). We include
510 age to make sure the experience-based inflation forecast is not picking up an age effect, as
511 well as other characteristics that the prior literature has found to be important determinants
512 of FOMC voting (Chappell, Havrilesky, and McGregor 1993, 1995; Chappell and McGregor
513 2000): gender, indicators for being a Regional Federal Reserve Bank President, for being
514 appointed during the time a Republican U.S. president was in office, and for the U.S. president
515 at the time of the first appointment being in the same party as the current president. For
516 reasons we discuss below, we also include an interaction between the indicator for Regional
517 Federal Reserve Bank President and an indicator for meeting times after November 1993.²¹

518 Table 2 presents the summary statistics. Our data covers 659 FOMC meetings with 7,350
519 votes. Overall, we have 160 dovish and 265 hawkish dissenting votes.

520 For the interpretation of the estimation results below, it is useful to keep in mind that the
521 share of dovish and hawkish dissents is quite small, typically somewhere between 2.2% and
522 3.6%. These averages hide, however, a large degree of heterogeneity by role served and over
523 time. Figure 2 shows the number of dissents in each FOMC meeting separately for Federal
524 Reserve Board members (Panel a) and Regional Federal Reserve Presidents (Panel b). We
525 can see that governors are much more likely to cast a dovish than a hawkish dissenting vote.
526 The opposite holds for regional presidents, with a much higher fraction of hawkish dissents, as

²⁰ <http://www.federalreservehistory.org/People>

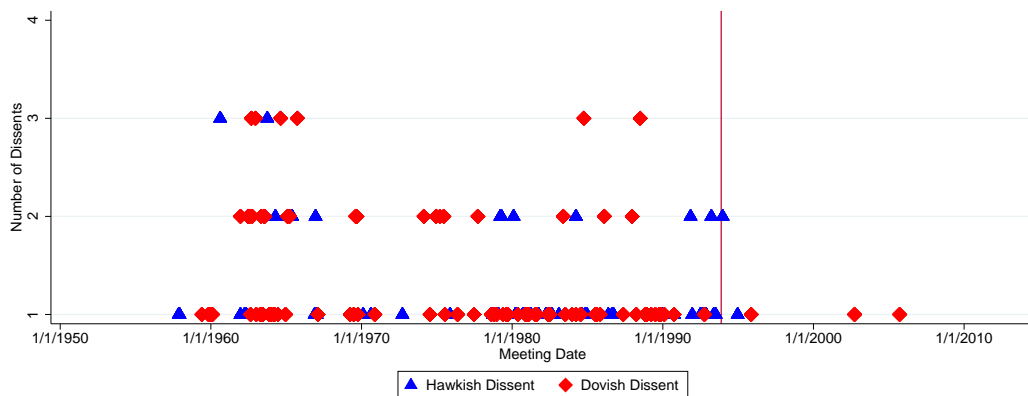
²¹ In addition, we have checked the robustness to including further control variables and their interactions, such as tenure (as a possible control for expertise, cf. Hansen and McMahon 2016a) and educational background. None of our results are affected if we include tenure, tenure squared, and controls for the school attended, the highest degree, and the field studied.

Table 2
Summary Statistics

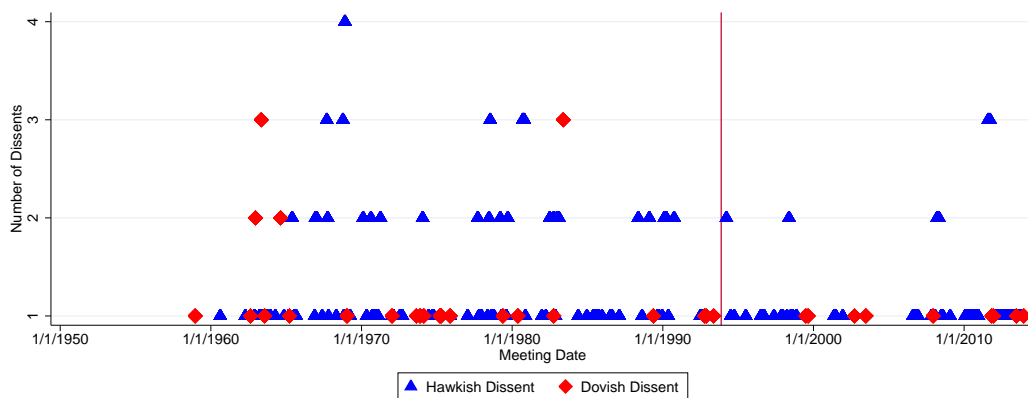
The table shows statistics for all FOMC meetings from 3/8/1951 to 1/29/2014. Details of the data construction are in Appendix D. The first column in Panel A reports the statistics for all FOMC members; and columns 2 to 4 report separately those for members who dissent towards monetary easing (*Dovish Dissent*), who consent (*Consent*), and who dissent towards monetary tightening (*Hawkish Dissent*). Panel B reports the pairwise correlations between voting record, experience-based inflation forecast, and member characteristics. We code *Vote* as 1 for a hawkish dissent, as 0 for a consent, and as -1 for a dovish dissent; *Fed Role* as 1 for regional Fed presidents and 0 for board members; *Party* as 1 if the member was first appointed while a Republican was U.S. president and 0 otherwise; and *Same Party* as 1 if the party of the U.S. president at the time of the appointment is the same as the party of the current president and 0 otherwise.

Panel A				
	All	Dovish Dissent	Consent	Hawkish Dissent
#Meetings	659	109	659	178
#Votes	7,350	160	6,925	265
Avg. age	56.4	55.6	56.4	57.1
Avg. tenure (in days)	2,286	1,924	2,285	2,545
% w/ PhD	46.3	50.6	45.8	56.2
% studied Economics	67.5	70.6	67.0	78.9
% Male	93.9	83.1	93.9	100
% Regional Fed president	44.6	23.7	44.0	72.1
% Republicans	53.7	45.0	53.3	70.9
% Same party as current pres.	56.7	67.5	56.6	52.1
Expr.-based infl. fcst.: mean	3.4%	3.8%	3.4%	4.1%
std.dev.	1.8%	2.2%	1.8%	2.1%

Panel B: Pairwise Correlation							
	Vote	Infl. fcst.	Male	Age	Fed role	Party	Same pty.
Vote	1.00	-	-	-	-	-	-
Exp.-based infl. fcst.	0.04	1.00	-	-	-	-	-
Male	0.08	-0.03	1.00	-	-	-	-
Age	0.02	-0.07	0.06	1.00	-	-	-
Fed role: Fed pres.	0.12	-0.01	0.10	-0.09	1.00	-	-
Party: Republican	0.07	0.15	-0.01	-0.02	0.10	1.00	-
Same Party	-0.03	0.05	-0.05	-0.18	0.03	0.12	1.00



(a) Dissents by Federal Reserve Board Members



(b) Dissents by Regional Federal Reserve Presidents

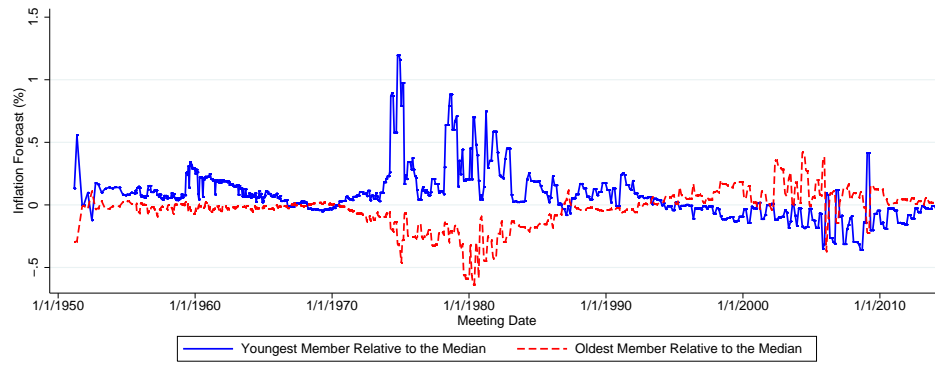
Figure 2
Dissents in FOMC Meetings

Notes. The red vertical line is the time-stamp for November 1993, after which the FOMC agreed to make public its lightly-edited transcripts with a five-year lag.

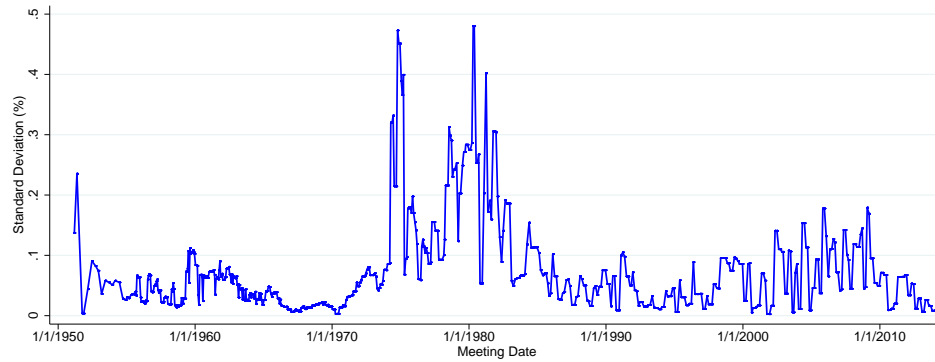
527 also indicated in Panel A of Table 2. Figure 2 also reveals a significant shift in voting behavior
 528 in November 1993, indicated by the red line. At that time, the Federal Reserve responded
 529 to pressure from Congress for more transparency and accountability, and agreed to publish
 530 lightly edited transcripts of the FOMC meetings with a five-year lag (Lindsey 2003). Before
 531 1993, the Federal Reserve published individual votes and summary minutes, but not the full
 532 transcripts. Meade and Stasavage (2008) find that this change reduced the willingness of
 533 FOMC members to verbally express dissents in the meetings. They also find a decrease in
 534 the propensity of Federal Reserve board members to dissent in formal voting, but the effect
 535 is not statistically significant in their sample until 1997. Figure 2, however, shows a fairly
 536 clear pattern. Dissents among Federal Reserve Board members became almost non-existent
 537 after the increase in transparency in 1993 (only 6 subsequent dissents). In contrast, dissents
 538 among regional Federal Reserve presidents remained quite common (71 subsequent dissents).
 539 Thus, the thresholds for FOMC members to voice dissent seems to have changed in 1993,
 540 and differently so for governors and presidents. This is an important feature of the data that
 541 we will need to accommodate in our econometric specification.

542 Returning to Panel A of Table 2, we see that hawkish dissenters are older, have a longer
 543 tenure on the FOMC, are more likely to have a PhD, to have studied economics, to be male,
 544 and to be appointed when the U.S. president in office was from a different party than the
 545 current U.S. president. (All differences other than the doctoral degree and field of study
 546 are statistically significant.) At the bottom of Panel A, we show the mean and standard
 547 deviation of FOMC members' experience-based forecasts $\pi_{j,t+1|t}^e$, calculated as described in
 548 Section 2.1. The average experience-based inflation forecasts for dovish dissenters is 3.8%
 549 while the average for hawkish dissenters is 4.1%, though the difference is not significant, and
 550 the average among consenters is even lower (3.4%).

551 Panel B shows the pairwise correlations between the key variables. We note again the
 552 positive relationship between the role of Fed president and votes leaning in a hawkish direc-
 553 tion, and the same for being male, older, and Republican. Experience-based forecasts and
 554 hawkish voting are also positively correlated, and the correlation is significant. Our empirical



(a) Experience-based inflation forecasts of the youngest and the oldest FOMC member, relative to the median-age member's forecast



(b) Standard deviation of members' experience-based inflation forecasts

Figure 3

Dispersion of Experience-based Inflation Forecasts in each FOMC meeting

analysis will test whether this relationship persists when analyzing the between-member variation in experiences after controlling for all other characteristics and their interaction effects, as implied by the policy rule (11).

In order to illustrate the identifying variation in our estimations, we plot two measures of the cross-sectional differences in experience-based inflation forecasts. Panel (a) of Figure 3 shows the learning-from-experience forecasts $\pi_{j,t+1|t}^e$ of the youngest and oldest FOMC members at each meeting, both net of the forecast of the median-age member. The differences range from 0 to 1.5 percentage points, with the biggest differences occurring during the high-inflation years of the late 1970s and early 1980s. At that time, younger members' inflation

564 experiences are dominated by the high and persistent inflation of the 1970s, more so than
 565 those of older members, and young members have the highest experience-based forecasts.
 566 From the mid-1980s onwards, younger members adapted more quickly to the now low rates
 567 of inflation and the relatively low persistence, and the lines cross. The perception of a low
 568 inflation persistence among younger members also contributes to the spike around 2010,
 569 when young members' learning-from-experience forecast is temporarily much higher than the
 570 median: When faced with the recession-driven low inflation rates at the time, young members
 571 expected a faster reversion of inflation rates up (towards the mean of slightly above 2%) than
 572 older members.

573 As a second measure of the heterogeneity in experience-based inflation forecasts, Panel
 574 (b) plots the time-series of the within-meeting standard deviation of $\pi_{j,t+1|t}^e$. There is a
 575 lot of variation in this dispersion measure over time. A typical value would be around 0.1
 576 percentage points (the full-sample within-meeting s.d. is 0.10 pp). It is useful to keep these
 577 magnitudes in mind for the interpretation of our empirical results below. Overall, the within-
 578 meeting dispersion of the experience-based forecasts is higher than in our earlier 1992-2004
 579 sample of FOMC member inflation expectations.

580 3.3. *Econometric Specification*

581 At each FOMC meeting, all current voting members cast a vote to either support or dissent
 582 from the proposal of the Fed chairperson. We classify the vote $V_{j,t}$ of member j in the
 583 meeting at time t as falling into one of three categories, $V_{j,t} \in \{-1, 0, 1\}$, for dovish dissent,
 584 no dissent, and hawkish dissent, respectively. We express the probability of being in one of
 585 these three categories as a function of the desired interest rate from equation (11) via the
 586 following ordered probit model: For $k \in \{-1, 0\}$,

$$\begin{aligned}
 &P(V_{j,t} \leq k | \pi_{j,t+1|t}^e, x_{j,t}, \pi_t, y_t) \\
 &= \Phi[\delta_{k,j,t} - a_t - \lambda_0 \omega \pi_{j,t+1|t}^e - \kappa' x_{j,t} - \pi_t x_{j,t}' \lambda_1 - (y_t - y^*) x_{j,t}' \gamma_1], \quad (12)
 \end{aligned}$$

587 where $\Phi(\cdot)$ denotes the standard normal cumulative distribution. We normalize $a_1 = 0$, and
588 we suitably scale all variables so that the latent residual has unit standard deviation.²² The
589 main variable of interest in estimating equation (12) is the experience-based forecast $\pi_{j,t+1|t}^e$.

590 The model in equation (12) generalizes the ordered-probit model because we allow the
591 dissent thresholds $\delta_{k,j,t}$ to vary with the characteristics of the FOMC member and over time,
592 especially across the transparency regime change in 1993. The most important concern moti-
593 vating this generalization is that regional Fed presidents may have different dissent thresholds
594 than Federal Reserve Board governors. As we illustrated in Figure 2, this concern is par-
595 ticularly relevant since the November 1993 change in transparency. To accommodate the
596 possibility of threshold-heterogeneity among FOMC members, we let the thresholds in equa-
597 tion (12) depend on the FOMC member characteristics $x_{j,t}$, including an interaction between
598 indicators for the role of Fed President and for a meeting time after November 1993:

$$\delta_{k,j,t} = \delta_{0,k} + \delta'_{1,k} x_{j,t} \quad \text{for } k \in \{-1, 0\}. \quad (13)$$

599 Note that coefficients of $\delta_{0,k}$ and $\delta_{1,k}$ are threshold-specific. With this threshold specification,
600 we obtain a version of the generalized ordered probit model in Williams (2006). We estimate
601 the model with maximum likelihood. As a robustness check, we also explore conventional
602 fixed-threshold ordered probit specifications in Section 3.6.

603 3.4. *Hyperinflation Experiences*

604 One FOMC member in our data set, Henry Wallich, personally experienced hyperinflation.²³
605 Wallich was born in Germany in 1914 in a family of bankers, and lived through Germany's
606 hyperinflation from 1921 to 1924. In the 1930s, he emigrated to the United States. He was

²² These normalizations are of no consequence for the estimated partial effects, and so we do not explicitly write them out.

²³ Henry Wallich is the only FOMC member with personal hyperinflation experiences that we could identify. H. Robert Heller, another German-born Federal Reserve Board member in the 1980s was born in 1940, after the hyperinflation. Stanley Fischer, who was born in Zambia in 1943, spent time in Israel, but not during its hyperinflation. He is not included in our sample because he started his tenure as vice chairman of the Federal Reserve Board in June 2014 while our sample ends in January 2014.

607 Federal Reserve governor from 1974 to 1986. Mr. Wallich dissented 27 times during his tenure
608 on the Federal Reserve Board, the highest number of dissents among all FOMC members in
609 Federal Reserve history, according to Thornton and Wheelock (2014).²⁴

610 The presence of Wallich in our sample poses the question of how to include hyperinflation
611 experiences into a parametric belief-updating scheme that is designed for (and works well in)
612 a regime in which inflation rates are at most a few percent per quarter. How can we adjust it
613 to properly describe expectation formation from data that include inflation rates around one
614 million percent per quarter? Note that early life experiences are heavily downweighted in the
615 calculation of the experience-based forecast, and it therefore makes virtually no difference
616 whether we use inflation rates of the U.S. or another country, in which an individual might
617 have grown up as a teenager, in low-inflation environments (with, say, single digit inflation
618 rates). This is different with hyperinflation experiences. For example, if we naively plug
619 German inflation rates from the 1920s into Wallich’s experienced inflation history, the outliers
620 are so big that three or four quarterly observations in 1923 would completely determine the
621 autoregressive coefficients for the rest of Wallich’s life. The post-1923 history would be
622 rendered irrelevant, which is unlikely to be a plausible representation of how hyperinflation
623 experiences influence inflation expectations.

624 We implement two approaches. First, we take a non-parametric approach and augment
625 the inflation experience-based forecast (using U.S. data) with an indicator variable that we
626 label “Wallich Dummy.” With the caveat that this variable captures the voting behavior of
627 just one individual member, the corresponding coefficient estimate provides at least tentative
628 evidence on the effects of a “hyperinflation” treatment, i.e., how the extreme experience of
629 hyperinflation may influence monetary policy views. Second, we also explore experience-
630 based expectations formation with a mixed inflation process that includes a hyperinflation
631 regime. This approach allows us to integrate hyperinflation experiences within one parametric

²⁴ In our sample, we identify only 26 dissents by Wallich, 24 of which were hawkish. The difference to Thornton and Wheelock’s classification could be Wallich’s vote on the 2/6/1979. In this meeting he dissented regarding the adopted growth rates of the monetary aggregates (M1-M3), but not regarding the open market transactions that were authorized. In our sample, this vote is not counted as dissent.

framework with qualitatively similar results, but at the cost of additional complexity. We show the corresponding estimation results in Appendix E.

3.5. Baseline Results

Table 3 presents the estimates of our baseline ordered probit specification (12) using data from 1951 to 2014. Our focus is on the coefficient estimate, and the corresponding marginal effect, of each member’s experience-based inflation forecast $\pi_{j,t+1|t}^e$. The chairman’s vote is excluded from the sample because he never dissented during our sample period.

Column (i) of Table 3 reports estimates for a specification where the dissent thresholds can vary with indicators for the type of FOMC member (governor versus regional president) and with an indicator for the post-November 1993 period, as well as their interaction. This allows the model to accommodate the dramatic shift towards fewer dissents among Federal Reserve Board members after November 1993 that we saw in Figure 2. The coefficient on the experience-based inflation forecast of 216.6 (s.e. 66.1) is significantly different from zero at conventional significance levels. The magnitude of the effect on the probability of dissent can be inferred from the average partial effects (APE) reported in the middle block of the table. An increase of 0.1 percentage points (pp) in the experience-based forecasts of an FOMC member—which, according to Figure 3b, is a typical within-meeting standard deviation of FOMC members experience-based inflation forecasts during much of the sample—translates into an increase in the probability of a hawkish dissent vote of 1.21 pp, which is a little less than a third of the unconditional probability of hawkish dissent ($265/6707 \approx 4.0\%$). The probability of a dovish dissent drops by 0.76 pp, which is approximately a third of the unconditional probability of dovish dissent ($160/6707 \approx 2.4\%$). Thus, the estimates imply an economically large impact of inflation experiences on voting behavior.

The APE of the Wallich dummy indicates that the “hyperinflation treatment” is associated with a very large reduction in the probability of dovish dissent, 5 pp, and increase in the probability of hawkish dissent, 8 pp. In other words, the effects associated with the Wallich dummy are roughly of the same magnitude as those associated with a 1.0 pp increase in an

659 FOMC member’s experience-based inflation forecast.

660 All results are virtually identical in column (ii) where we allow the dissent thresholds to
661 also depend on the FOMC members’ individual characteristics (age, gender, party of president
662 at appointment indicator, and same party as current president indicator).

663 *3.6. Robustness Checks*

664 One potential concern with the estimates in columns (i) and (ii) in Table 3 is that the inclusion
665 of meeting fixed effects in the ordered probit model might introduce an incidental parameters
666 problem.²⁵ To address this concern, we estimate an alternative specification in which
667 we omit the meeting fixed effects. Instead, we specify that the probabilities of dissent are
668 driven directly by cross-sectional differences (against the incumbent chairperson) in inflation
669 experiences and other personal characteristics. That is, we forgo the non-parametric controls
670 for the time-specific determinants of voting behavior, but still remove some of their effect to
671 the extent that it is captured by the time-varying values associated with the chairperson.

672 The results are in columns (iii) and (iv) of Table 3. The coefficient estimates of the
673 experience-effect forecast variable and the Wallich dummy decrease, but these changes largely
674 reflect the altered econometric specification. As the APE calculations reveal, the implied
675 economic magnitudes remain similar to those in columns (i) and (ii). Both sets of estimates
676 also remain statistically significant. We conclude that our findings are not generated by
677 estimator inconsistencies due to the incidental parameter problem.

678 As a second robustness check, we test whether we still find experience effects if we employ
679 a simple ordered probit model with fixed dissent thresholds and restrict the analysis to
680 subsamples in which the fixed-threshold assumption is more likely to hold, i.e., prior to the
681 decrease in dissents in November 1993 and for the votes of regional presidents.

682 Table 4 presents the results of this exercise. The specification in column (i) employs the
683 voting records of all members prior to November 1993. The estimated results turn out to

²⁵ As T increases, the number of meeting fixed effects grows at the same rate as T . As a consequence, the probit estimator is inconsistent and standard formulas for the asymptotic distribution of the estimator may not provide a good approximation of its finite-sample properties.

Table 3
Experience-based Inflation Forecasts and FOMC Voting Behavior

The sample period is March 8, 1951 to January 29, 2014. The experience-based inflation forecast for each member at each meeting is calculated by recursively estimating a mixed seasonal AR(1) model using the member's lifetime history of inflation, as described in Section 2.1 (with $\theta = 3.044$). The *Wallich Dummy* equals one if the member is Henry Wallich; 0 otherwise. The average partial effects (APE) reported at the bottom of the table are calculated by taking the partial derivative of the probability of a given voting category with respect to the experience-based inflation forecast at each sample observation and then averaging these partial derivatives across the whole sample. Column (i) and (iii) report the results assuming that the thresholds depend on a) whether the member is a board member or regional president, and b) whether the meeting occurs after Nov. 1993 and the interaction of a) and b). Column (ii) and (iv) report the results assuming that the thresholds depends, in addition, on age, gender, party of president at appointment indicator, and same party as current president indicator. In parentheses we report the standard error based on two-way clustering by both member and meeting.

	Ordered Probit		Ordered Probit "de-chaired"	
	(i)	(ii)	(iii)	(iv)
Experienced-Based Forecast	216.6 (66.1)	214.4 (67.8)	97.2 (39.5)	98.5 (39.0)
Wallich Dummy	1.43 (0.36)	1.39 (0.36)	1.05 (0.17)	1.05 (0.17)
Meeting FE	Yes	Yes	No	No
Controls	Yes	Yes	Yes	Yes
Thresholds	Role $\times I_{>93}$	All	Role $\times I_{>93}$	All
Observations	6,707	6,707	6,707	6,707
Pseudo R^2	39.0%	39.1%	9.7%	10.0%
APE of Experienced-Based Forecast:				
Dovish Dissent	-7.6	-7.6	-5.1	-5.1
Consent	-4.4	-4.3	-2.5	-2.5
Hawkish Dissent	12.1	11.9	7.6	7.7
APE of Wallich Dummy:				
Dovish Dissent	-0.050	-0.050	-0.055	-0.055
Consent	-0.029	-0.028	-0.027	-0.027
Hawkish Dissent	0.080	0.077	0.082	0.082

Table 4
Experience-based Inflation Forecasts and FOMC voting behavior: Different Sample Periods
with Fixed Ordered Probit Thresholds

The experience-based inflation forecast for each member at each meeting is calculated as in Table 3. The *Wallich Dummy* equals one if the member is Henry Wallich; 0 otherwise. The average partial effects (APE) reported at the bottom of the table are calculated by taking the partial derivative of the probability of a given voting category with respect to the experience-based inflation forecast at each sample observation and then averaging these partial derivatives across the whole sample. Column (i) reports the results with all FOMC members prior to November 1993. Column (ii) reports the results with regional Fed presidents only over the entire sample. Column (iii) reports the results with regional Fed presidents only prior to November 1993. Column (iv) reports the results with all FOMC members prior to November 1993 and regional Fed presidents only afterwards. In parentheses we report the standard error based on two-way clustering by both member and meeting.

	All Members pre-1993 (i)	Regional Pres. Only Full Sample (ii)	Regional Pres. Only pre-1993 (iii)	Mixed Members Full Sample (iv)
Expr.-Based Fcst.	230.0 (80.0)	379.2 (103.9)	495.5 (155.9)	230.9 (68.9)
Wallich Dummy	1.49 (0.37)	- -	- -	1.51 (0.37)
Meeting FE	Yes	Yes	Yes	Yes
Controls	Yes	Yes	Yes	Yes
Observations	5,123	3,275	2,467	5,931
Pseudo R^2	38.0%	45.3%	49.2%	38.3%
APE of Expr.-Based Fcst.:				
Dovish Dissent	-9.5	- 6.4	-8.0	-9.0
Consent	-3.5	-19.5	-21.0	-5.2
Hawkish Dissent	13.0	26.0	29.0	14.2
APE of Wallich Dummy:				
Dovish Dissent	-0.062	-	-	-0.059
Consent	-0.022	-	-	-0.034
Hawkish Dissent	0.084	-	-	0.093

684 be very close to our benchmark case with characteristics-dependent dissent thresholds. We
685 estimate slightly larger average partial effects of -9.5 pp for dovish dissents and $+13.0$ pp for
686 hawkish dissents, again measured as the response to an increase of 1.0 pp in FOMC member's
687 experience-based forecasts. The APE of the Wallich dummy also become slightly larger in
688 both directions in this subsample.

689 In column (ii) we restrict the sample to regional Fed presidents, but use the full sample
690 period. This subsample exploits the fact that the November 1993 transparency change did
691 not have much effect on the voting behavior of regional presidents, as we showed in Figure 2.
692 We find that the estimated effects are even stronger.²⁶ In this subsample, the proper com-
693 parison for the APEs is the unconditional probability of dovish or hawkish dissent by Federal
694 Reserve presidents. The estimated average partial effects (APE) of changes in experience-
695 based inflation forecast on the voting behavior of regional presidents suggests that an increase
696 of 0.1% in the experience-based forecast of regional Fed presidents translates into an increase
697 in the probability of a hawkish dissent by roughly 2.6 pp, which is a bit less than one half
698 of the unconditional probability of a hawkish dissent by regional Fed presidents ($191/3275$
699 $\approx 5.8\%$). Meanwhile, the probability of a dovish dissent drops by 0.6 pp, which is roughly
700 half of the unconditional probability of dovish dissent by regional Fed presidents ($38/3275 \approx$
701 1.2%). Comparing these numbers to our baseline case with all FOMC members, it appears
702 that past inflation experience has a stronger effect on the votes of regional Fed presidents.

703 In column (iii), we further restrict the sample of regional presidents to include only the
704 pre-November 1993 periods. The estimated APEs remain very similar.

705 Finally, in column (iv), we analyze the union of the column (i) and column (ii) subsamples,
706 i.e., all members pre-November 1993 and only Fed presidents post-November 1993. The
707 estimated effects are very similar to those in column (i), as well as to the benchmark case.

708 Appendix F contains an additional set of results with fixed thresholds where we use the
709 full sample of all members and meetings. These results, shown in Table A.2, are again very

²⁶ Since Henry Wallich is not a regional Fed president, we cannot estimate the Wallich dummy coefficient in this case.

710 similar. This simplified specification also allows a straightforward interpretation of the effects
711 of the member characteristics, $x_{j,t}$. We report the coefficients associated with these variables
712 in Table A.3.

713 As a last robustness check, we employ variations in the gain parameter θ of the learning
714 algorithm. So far we fixed θ at the point estimate of 3.044 from Malmendier and Nagel (2016).
715 Relying on a prior estimate has the advantage that we credibly tied our hands, rather than
716 picking θ to fit the voting behavior of FOMC members. We now check how the fit and the
717 estimated APE change if we vary θ . That is, we reestimate the learning rule for each FOMC
718 member over a range of plausible values of θ . We then rerun the estimation from column (i)
719 of Table 3 with the corresponding alternative experience-based forecasts of inflation.

720 For our first alternative value, we reestimate the gain parameter using MSC data based
721 on the same procedure as in Malmendier and Nagel (2016), but with the sample restricted to
722 college graduates. This sub-sample is more comparable to the FOMC members in terms of
723 educational background. We estimate $\theta = 3.334$ (with s.e. of 0.347). That is, the θ estimate
724 for college grads is less than one standard error from the full-sample estimate. As column
725 (i) of Table 5 shows, employing $\theta = 3.334$ rather than $\theta = 3.044$ does not alter our findings.
726 The results remain very similar to our baseline estimates in column (i) of Table 3.

727 Second, we employ a range of θ values between $\theta = 2$ to $\theta = 4$ (in steps of 0.5). As shown
728 in columns (ii) to (v) of Table 5, all results are qualitatively similar to our baseline estimates
729 as in column (i) of Table 3. We conclude that our results are robust to variations over a
730 broad range of plausible θ values.

731 In summary, we find that lifetime inflation experiences have an economically large and
732 robust effect on FOMC members' voting behavior. When an FOMC members' lifetime ex-
733 perience suggests higher inflation going forward than the experience of their peers, they are
734 more likely to dissent in a hawkish direction. The opposite holds for inflation experiences
735 suggesting lower future inflation; they induce dovish dissents.

Table 5
Experience-based Inflation Forecast and FOMC voting behavior: Varying Weights on Past Experience

The sample period is from March 8, 1951 to January 29, 2014. The ordered probit specification is the same as in column (i) of Table 3, but here with different values of the gain parameter θ in the calculation of the experience-based inflation forecast. The *Wallich Dummy* equals one if the member is Henry Wallich; 0 otherwise. The average partial effects (APE) reported at the bottom of the table are calculated by taking the partial derivative of the probability of a given voting category with respect to the experience-based inflation forecast at each sample observation and then averaging these partial derivatives across the whole sample. We assume that the ordered probit thresholds depend on a) whether the member is a board member or regional president, and b) whether the meeting occurs after Nov. 1993 and the interaction of a) and b). In parentheses we report the standard error based on two-way clustering by both member and meeting.

	$\theta = 3.334$ (i)	$\theta = 2$ (ii)	$\theta = 2.5$ (iii)	$\theta = 3.5$ (iv)	$\theta = 4$ (v)
Experience-Based Forecast	183.8 (61.2)	218.2 (68.4)	256.7 (74.3)	165.4 (58.0)	117.6 (48.5)
Wallich Dummy	1.42 (0.36)	1.45 (0.36)	1.46 (0.36)	1.41 (0.36)	1.39 (0.36)
Meeting FE	Yes	Yes	Yes	Yes	Yes
Controls	Yes	Yes	Yes	Yes	Yes
Observations	6,707	6,707	6,707	6,707	6,707
Pseudo R^2	38.9%	38.9%	39.1%	38.8%	38.6%
APE of Experienced-Based Forecast					
Dovish Dissent	-6.5	-7.7	-9.1	-5.9	-4.2
Consent	-3.8	-4.5	-5.2	-3.4	-2.4
Hawkish Dissent	10.3	12.2	14.3	9.2	6.6
APE of Wallich Dummy					
Dovish Dissent	-0.050	-0.051	-0.052	-0.058	-0.050
Consent	-0.029	-0.030	-0.030	-0.029	-0.029
Hawkish Dissent	0.079	0.081	0.081	0.079	0.078

4. Inflation Experiences and the Tone of FOMC Members' Speeches

The seeming reluctance of governors to dissent, especially since November 1993, indicates that FOMC members may not always fully reveal their disagreement in their voting behavior. They might voice their monetary policy views in discussions or speeches, but ultimately refrain from casting a dissenting vote.

In this section, we test whether FOMC members' attitude towards monetary policy can be detected in the language, or tone, they use in their speeches. To categorize language as hawkish or dovish, we employ an automated search-and-count approach that closely builds on the analysis of Apel and Grimaldi (2014). Apel and Grimaldi (2014) examine the Swedish Riksbank minutes and test whether the tone of an Executive Board member conveys a policy inclination toward loosening or tightening monetary policy. We apply their classification of tone to the speeches of FOMC members, with some adjustments to the different context and sample, as described in detail below.

Our data consists of all 6,353 "Speeches and Statements" available from the Federal Reserve Archival System for Economic Research (FRASER), and additional 658 hand-collected speeches from the websites of the regional FRBs. To be consistent with the analysis of votes in the previous section, we focus on voting members and remove speeches delivered by the (rotating) non-voting regional Fed presidents. We also drop pdf files that could not be properly converted into text and for which the date of the speech cannot be determined. The final sample consists of 4,294 speeches for 86 FOMC members from the meeting on March 8th, 1951, to June 2014, with an average of 50 speeches per member. A quarter of the members have 15 or fewer speeches in the sample, while long-serving FOMC members, especially chairmen, tend to have more than 100 speeches. For example, our sample includes 482 speeches by Alan Greenspan and 264 by Ben Bernanke. Appendix G details the construction of the data set.

Figure 4 shows the time series of the speeches in our sample. The total number increases over time. From 1965 onwards, the average number of speeches in a quarter is above 17, i.e.,

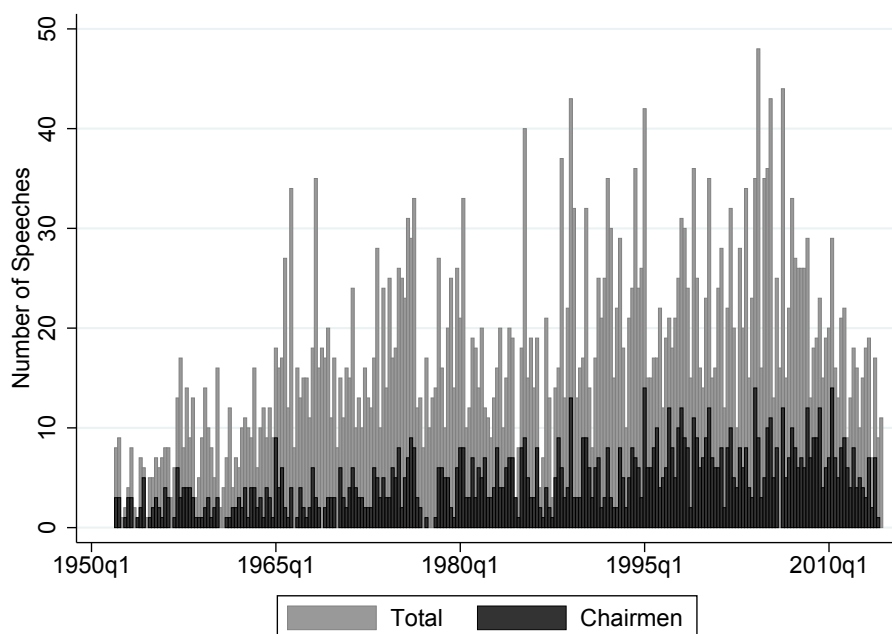


Figure 4
Number of FOMC Member Speeches Over Time

763 more than one speech per FOMC member per quarter. The share of speeches delivered by
764 the chair increases only slightly over time and lies around 30%.

765 To classify the tone of these speeches, we follow Apel and Grimaldi (2014) and gener-
766 ate two-word combinations from two sets of words: nouns describing the *goals* of a central
767 bank, and adjectives describing the *attitudes* of a central banker towards a goal. The list
768 of goals in Apel and Grimaldi (2014) consists of “inflation,” “cyclical position,” “growth,”
769 “price,” “wages,” “oil price,” and “development.” In addition, we show estimation results af-
770 ter adapting the list to the FOMC context by adding “(un-)employment.” Apel and Grimaldi
771 had omitted this term because the Swedish Riksbank has price stability as a single goal, while
772 the U.S. Federal Reserve System has a dual mandate. The list of attitudes consists of “de-
773 crease,” “slow,” “weak,” and “low” on the dovish side, and “increase,” “fast,” “strong,” and
774 “high” for the hawkish counterpart. For unemployment, we swap the hawkish and the dovish
775 adjectives.

776 For each mention of a *goal*, we check whether words from the *attitudes* list occur within

777 a range (n -gram) of two words before and after the *goal*. While Apel and Grimaldi (2014)
778 require the *attitude* word to appear directly before the *goal*, such two-word combinations do
779 not generate sufficient variation between the speeches of FOMC members, possibly because
780 the language is less formal and standardized than the Swedish central bank minutes, and the
781 speeches of the FOMC members address a wider audience. We choose a range of two words
782 before and after the goal (i.e., five-grams) in order to accommodate two-word goals such as
783 “oil price,” for which the *attitude* word is allowed to appear either one or two words before
784 “oil” or one word after “price”, as well as to accommodate different relative positions of the
785 classification words. For example, an FOMC member might refer to “increasing prices” or
786 mention that “prices are increasing.” In addition, by centering the n -grams around the noun
787 of interest, we avoid double-counting: Every word of the speech can occur in up to n n -grams
788 but is at most once in the center of an n -gram.

789 We drop n -grams containing more than one “goal” or “attitude” with different connota-
790 tions. For example, the sequence “... low growth and unemployment ...” generates a five-gram
791 centered around the *goal* ‘growth’ combined with the *attitude* ‘low;’ but the same five-gram
792 also features another *goal*, unemployment. Since these two goals generate a dovish combi-
793 nation (“low growth”) as well a hawkish one (“low unemployment”), we drop the five-gram
794 from our analysis.

795 As in Apel and Grimaldi (2014), we then collapse the number of hawkish and dovish
796 combinations in each speech into a single index:

$$Net\ Index = \frac{Hawkish}{Hawkish + Dovish} - \frac{Dovish}{Hawkish + Dovish}. \quad (14)$$

797 The index ranges from -1 to $+1$, where -1 indicates that all of the tagged n -grams are
798 dovish, and $+1$ that all tagged n -grams are hawkish. Hence, larger values of *Net Index*
799 indicate greater hawkishness. If no hawkish or dovish n -grams can be found in the text, *Net*
800 *Index* is set to zero.

801 Table 6 provides some summary statistics of *Net Index* and its components. On average,

Table 6
Tone of Speeches: Summary Statistics

The sample includes voting FOMC members' speeches from March 1951 to June 2014. *Net Index* is an index of hawkishness calculated as described in equation (14). *Hawkish/Dovish Tags* is the average count of hawkish and dovish word combinations in a speech. *Hawkish/Dovish Tags for employment* counts the additional hawkish/dovish word combination per speech for the goal employment/unemployment.

	N	Mean	Std. Dev.	Min	Median	Max
5-grams per speech	4,294	3,378	2,098	10	3,058	23,891
Net Index excl. (un)empl.	4,294	0.10	0.55	-1	0	1
Net Index incl. (un)empl.	4,294	0.10	0.55	-1	0	1
Hawkish Tags excl. (un)empl.	4,294	1.50	3.05	0	0	68
Hawkish Tags for (un)empl.	4,294	0.29	0.85	0	0	16
Dovish Tags excl. (un)empl.	4,294	0.99	2.08	0	0	33
Dovish Tags for (un)empl.	4,294	0.22	0.72	0	0	12

a speech contains 3,378 five-grams, but there is a large variation across speeches. A mean of 1.50 five-grams are tagged as hawkish, and 0.99 as dovish, when we use the original set of goals defined in Apel and Grimaldi (2014). By adding “employment/unemployment” to the goal list, we add an additional 0.29 hawkish and 0.22 dovish tags per speech. The average *Net Index* across speeches is about 0.10, irrespective of the specification of the goal list. The positive value indicates that the language used in our sample of speeches is slightly tilted towards a more hawkish wording, albeit with a large standard deviation of 0.55.

To develop our estimating equation, we assume that cross-sectional differences in *Net Index* between FOMC members map approximately linearly into differences in their desired interest rate according to equation (11). We obtain

$$Net\ Index_{j,t} = \alpha_t + \beta_1 \pi_{j,t+1|t}^e + \beta_2' x_{j,t} + \pi_t x_{j,t}' \beta_3 + (y_t - y^*) x_{j,t}' \beta_4, \quad (15)$$

where the coefficients are multiples (by the same factor) of the corresponding coefficients in equation (11). As before in the voting analysis, we relate the outcome during quarter t to $\pi_{j,t+1|t}^e$, which is constructed based on the inflation history leading up to the end of quarter

815 $t - 1$. We also continue to focus on cross-sectional heterogeneity by employing time-fixed
816 effects, α_t , to absorb common time-variation in the use of hawkish and dovish expressions.²⁷
817 The vector of member characteristics $x_{j,t}$ is the same as in the voting analysis (age, gender,
818 party of president at appointment indicator, and same party as current president indicator),
819 and it can influence the level of hawkishness as well as the extent to which inflation or output
820 gap increase or decrease hawkishness.

821 In addition, we also account for the fact that, differently from voting behavior, speech
822 tone is likely subject to additional sources of heterogeneity. ‘Speech style’ and the choice of
823 words can depend on other personal characteristics of the speaker, including education and
824 prior professional experience. This heterogeneity adds noise and it could introduce correlated
825 omitted variables. We use two approaches to account for these additional personal character-
826 istics. First, we augment equation (15) with dummy variables that control for education and
827 prior professional experience.²⁸ We generate indicator variables for having earned a PhD,
828 a JD, an MBA, or a Master’s degree as the highest degree. We also collect information on
829 FOMC members’ prior professional experience from the Fed’s History Gateway and from
830 the personal vitae of FOMC members. Using those sources, we generate indicator variables
831 for prior experience in the financial industry, in non-finance industries, in other government
832 organizations and agencies besides the Fed, and as an academic (i. e., having worked full-time
833 in an academic department at some point prior to becoming an FOMC member). As a second
834 approach to addressing heterogeneity in speech style, we absorb any time-invariant personal
835 characteristics with member fixed effects. Under this approach, the coefficient of interest,
836 β_1 , is identified from within-member variation of speech tone as their inflation experience
837 changes. The inclusion of member fixed effects is, on the one hand, most comprehensive
838 in accounting for unobserved person-specific determinants of language use. On the other
839 hand, it removes a substantial amount of variation coming from the differences in average

²⁷ For example, in times of high unemployment, all FOMC members might be likely to employ the goal-attitude combination “high unemployment” in their five-grams.

²⁸ Details on the construction of both variables are at the end of Appendix G, including summary statistics in Appendix-Table A.4.

Table 7
Experience-based Inflation Forecasts and FOMC Members' Tone of Speeches

OLS regressions with the *NetIndex* measure of speech hawkishness from equation (15) as the dependent variable. The experience-based inflation forecast for each member at each meeting is calculated as in Table 3. All estimations include the same controls and interactions with recent CPI inflation and unemployment as in Table 3. In addition, we include the controls for education and professional background detailed in the text, except for columns (3) and (6) where we instead employ member fixed effects. In columns (2) and (5), we drop speeches of chairmen. Standard errors, shown in parentheses, are calculated allowing for two-way clustering by FOMC member and year-quarter.

	Net Index excluding (un)empl.			Net Index including (un)empl.		
	(i)	(ii)	(iii)	(iv)	(v)	(vi)
Experience-Based Fcst.	32.88 (14.52)	39.15 (18.50)	43.28 (16.32)	29.97 (13.70)	38.97 (17.74)	47.07 (14.68)
Wallich Dummy	0.10 (0.08)	0.17 (0.10)	- -	0.12 (0.07)	0.16 (0.07)	- -
Member FE	No	No	Yes	No	No	Yes
Year-quarter FE	Yes	Yes	Yes	Yes	Yes	Yes
Chair's speeches dropped	No	Yes	No	No	Yes	No
Industry expr. controls	Yes	Yes	No	Yes	Yes	No
Degree controls	Yes	Yes	No	Yes	Yes	No
Adjusted R^2	4.4%	4.7%	5.7%	3.9%	4.3%	5.1%
Observations	4294	3295	4294	4294	3295	4294

840 experience-based inflation forecasts between FOMC members.

841 Table 7 presents the results. In columns (i) to (iii), we use the original *NetIndex* with
842 the same list of goals as in Apel and Grimaldi (2014). In columns (iv) to (vi), we expand the
843 index and add (un-)employment to the list of goals.

844 We estimate a significant effect of differences in inflation experiences on speech tone. In
845 the baseline specification in column (i), the coefficient of 32.88 (s.e. 14.52) is significantly
846 different from zero at the 5% level. An increase of 0.1 percentage points in the experience-
847 based forecasts of an FOMC member—which is a typical within-meeting standard deviation—
848 is associated with an increase of about 0.03 in the *NetIndex*, or about 1/16th of a standard
849 deviation of *NetIndex*. This magnitude seems plausible for two reasons. First, the experience
850 effects should be relatively subtle given the small age heterogeneity of FOMC members.
851 Second, there is likely substantial measurement noise in *NetIndex*. This is apparent from

the fact that the R^2 is only 4.4% despite the inclusion of time fixed effects, even though one would presumably expect substantial common time-variation in the *true* hawkishness of speeches.

The point estimate for the Wallich dummy suggests that hyperinflation experience predicts a 0.10 higher *NetIndex* than that of other Fed governors with similar characteristics at the time; but given the standard error (0.08) it is not possible to rule out a zero effect at conventional significance levels in first specification. Nevertheless, it is noteworthy that the ratio of the point estimates for the experience-based forecasts and the Wallich dummy (about 200-300 here depending on the specification) is of the same order of magnitude as in the voting analysis in Table 3 (about 100-150).

In column (ii) we test the extent to which our estimation results are affected by the large number of speeches given by the chairperson. Speeches of the chair might systematically differ from the speeches of other FOMC member for at least two reasons. First, chairs might use a more balanced language for political reasons, especially given that they tend to attract more attention. Second, chairs might use the speeches to provide signals to financial markets, whereas the other FOMC member might primarily use the speeches to communicate their views between each other. When we drop the chair's speeches, we obtain a slightly larger coefficient of 39.15 (s.e. 18.50) which is also significant at the 5% level. In column (iii), we include both member fixed effects and speeches of the chair. The outcome remains almost unchanged.

In columns (iv) through (vi), we re-estimate the specifications from columns (i) through (iii) for the version of *Net Index* that includes (un-)employment as a goal. The results are very similar.

We conclude that the personal lifetime inflation experiences of FOMC members leave a significant imprint not only on their dissenting votes and the strong policy leanings expressed with those, but also on the more subtle expressions of attitudes towards monetary policy voiced in speeches.

5. Inflation Experiences and the Federal Funds Rate Target

Our analyses of cross-sectional differences in stated inflation expectations, voting decisions, and the tone of speeches all indicate that FOMC members rely, to a significant extent, on their own inflation experiences. We now test whether this partial reliance on personal experiences affects even the committee’s ultimate decision about the Federal Funds target rate. That is, we test whether there is an incremental effect of FOMC members’ experience-based inflation forecasts on the consensus decision, alongside conventional interest-rate determinants in a Taylor rule.

This last analysis has to overcome two additional difficulties. First, we aim to explain the time series of federal funds rates rather than cross-sectional differences in behavior. In the preceding analyses, we were able to identify the effects of inflation experiences from cross-sectional cohort-specific differences as well as from changes in those differences over time. Time dummies allowed us to absorb any potentially confounding time-series factors, including conventional determinants of monetary policy. Here, instead, we cannot absorb time-series factors but need to take a stand on a specific model of the time-series determinants of monetary policy decisions. We will focus on standard versions of the Taylor rule that have been proven successful in predicting the FOMC’s federal funds rate policy in the recent empirical literature.

The second challenge is the limited data availability in the time-series dimension, relative to our earlier cross-sectional analyses. As we detail below, the need for output-gap forecast data and limitations of the forecast-based Taylor rule restrict our analysis to 1987Q3-2007Q2.

Because of these additional challenges, the time-series tests in this section should be viewed in conjunction with our earlier evidence from inflation forecasts, voting decisions, and the tone in speeches. The analysis in this section evaluates whether the federal funds rate moves over time in a way that is consistent with the evidence above.

In order to test whether we can detect the influence of FOMC members’ personal experience in the fed funds rate target they set, we first have to aggregate the lifetime experiences of

all members present at a given meeting, and hence their corresponding desired interest rates. We start from the linear approximation of the subjective Taylor rule in (11) that represents the desired federal funds rates of the individual FOMC members present at the meeting. In our baseline specification, we assume that the federal funds rate target decided at an FOMC meeting represents the average of the members' desired rate levels. (Alternatively, we use the median or the chairperson's desired rates instead; see Appendix I for both robustness checks.) Averaging equation (11) across all FOMC members present at a meeting at time t , we obtain (as derived in Appendix C)

$$i_t^* = \beta_0 + \bar{z}_t + \beta_e \bar{\pi}_{t+1|t}^e + \beta_\pi \pi_t + \beta_y (y_t - y^*), \quad (16)$$

where $\bar{\pi}_{t+1|t}^e$ is the average of the FOMC members' experience-based inflation forecasts as of the meeting at time t , and \bar{z}_t is the time- t average of

$$z_{j,t} = \kappa' x_{j,t} + \pi_t x'_{j,t} \lambda_1 + (y_t - y^*) x'_{j,t} \gamma_1. \quad (17)$$

With $\bar{z}_t = 0$ and $\beta_e = 0$ (the latter would follow from $\omega = 0$ in equation (11)), this reduces to the standard Taylor rule. Our earlier analyses suggest instead $\omega > 0$ and hence $\beta_e > 0$, i.e., that FOMC members rely to some extent on their experience-based inflation forecast, over and above the standard inflation- and output-gap components of the Taylor rule.

Turning to the empirical implementation, we aim to minimize the chance that $\bar{\pi}_{t+1|t}^e$ picks up the effects of measurement error in the objective macroeconomic information used by the FOMC. In order to do so, we need to use empirical measurements of π_t and $(y_t - y^*)$ that are as close as possible to the information used by the FOMC. We do so in three steps. First, we build on Orphanides (2001, 2003), who shows that forecast-based variants of the Taylor rule provide a better empirical fit to the actual decisions about the federal funds rate target than a rule based on realized macroeconomic data. We follow Orphanides (2003) and replace, for every meeting in quarter t , π_t and $(y_t - y^*)$ with the Federal Reserve staff's Greenbook

928 forecasts of inflation from quarter $t - 1$ to $t + 3$ and forecasts of the output gap in quarter
929 $t + 3$.²⁹ Second, we use the inflation index that the FOMC relies on primarily. Following
930 Mehra and Sawhney (2010) and Bernanke (2010), we construct the time series of the staff’s
931 “core inflation forecast” from Greenbook forecasts of the core CPI inflation before the year
932 2000 and of the core PCE inflation thereafter. Third, we follow Coibion and Gorodnichenko
933 (2012) and use one FOMC meeting per quarter (the one that is closest to the middle of
934 the quarter). This ensures that the CPI information leading up to the end of the previous
935 quarter, which is embedded in $\bar{\pi}_{t+1|t}^e$, is available to the FOMC. Moreover, obtaining data
936 points that are almost equally spaced in time is useful when we include lagged interest rates.

937 We start the sample in 1987Q3 when the Federal Reserve’s staff forecast of the output
938 gap become available. As shown in Orphanides (2001), the Taylor rule, and its forecast-based
939 variant in particular, then provides a good description of actual Federal Reserve policy. We
940 end the sample in 2007Q2, just before the start of the financial crisis. Mishkin (2010) argues
941 that starting in the summer of 2007, the FOMC reacted to information from financial markets
942 that did not yet show up in inflation and output gap forecasts. As a result, the Taylor rule
943 does not provide a good description of the FOMC’s policy during this period.³⁰

944 Column (i) of Table 8 provides a benchmark for the analysis. We replicate the standard
945 Taylor rule findings without \bar{z}_t and $\bar{\pi}_{t+1|t}^e$. The estimated coefficients on the output gap (0.67)
946 and on the inflation variable (1.51) are consistent with typical findings in the literature. In
947 column (ii), we include the average experience-based forecast, $\bar{\pi}_{t+1|t}^e$. We estimate a coefficient
948 of 0.38 (s.e. 0.21) that is significantly different from zero at a 10% level. Hence, FOMC
949 members’ average experience-based inflation forecast has explanatory power for the federal
950 funds rate target over and above the staff forecast of inflation and the output gap, albeit only
951 marginally significant in this specification. Considering the coefficients on the two inflation

²⁹ In the earlier sample, the Greenbooks did not explicitly include output gap forecasts, but the Board of Governors staff used them to construct wage and inflation forecasts. See www.philadelphiafed.org/research-and-data/real-time-center/greenbook-data/gap-and-financial-data-set.cfm for more details.

³⁰ Baxa, Horváth, and Vašíček (2013) provide empirical evidence consistent with this description of FOMC policy. They show that adding financial market variables to the Taylor rule equation matters significantly in 2008-09, over and above inflation and output gap information.

952 variables together, the weight on the experience-based forecast in our experience-augmented
 953 Taylor rule (16) is about $0.38/(1.27 + 0.38) \approx 0.23$.

954 Column (iii) turns to the full specification (16) by including \bar{z}_t , which captures the effect
 955 of the changing characteristics of the FOMC members on interest-rate decisions. Through
 956 equation (17), \bar{z}_t depends on parameters that we cannot credibly estimate purely from time-
 957 variation in the federal funds rate target. For this reason, we construct \bar{z}_t from the estimates
 958 in our voting analysis. The fitted values of the latent desired interest rate of our ordered
 959 probit model (12) allow us to construct $z_{j,t}$ in equation (17) up to scaling by a constant.
 960 More precisely, we use the ordered probit specification with fixed thresholds, shown in the
 961 robustness tables in the Appendix in Table A.2. (With characteristics-dependent thresholds,
 962 we would not be able to separate the effect of characteristics on the thresholds from the effect
 963 on the latent desired interest rate.) Averaging the fitted $z_{j,t}$ across FOMC members each
 964 period yields \bar{z}_t . After adding \bar{z}_t to the Taylor rule as an explanatory variable in column (iii)
 965 of Table 8, we find that the coefficient on the experience-based inflation forecast increases to
 966 0.61 (s.e. 0.24), which is now statistically highly significant.

967 Finally, in columns (iv) to (v), we check whether the experience variable might be picking
 968 up the effect of a lagged federal funds rate. Existing evidence from the literature on monetary
 969 policy rules, e.g., Clarida, Galí, and Gertler (2000) and more recently Coibion and Gorod-
 970 nichenko (2012), indicates that the Federal Reserve’s policy is best characterized by partial
 971 adjustment, where the actual federal funds rate target i_t is a weighted average of the desired
 972 federal funds rate i_t^* from equation (16) and the lagged actual federal funds rate target i_{t-1} ,

$$i_t = (1 - \rho)i_t^* + \rho i_{t-1}. \quad (18)$$

973 To check whether accounting for partial adjustment of this form changes the conclusions
 974 regarding the experience effects, we combine the partial adjustment rule with equation (16):

$$i_t = c + (1 - \rho) \left[\bar{z}_t + \beta_e \bar{\pi}_{t+1|t}^e + \beta_\pi \pi_t + \beta_y (y_t - y^*) \right] + \rho i_{t-1}. \quad (19)$$

Table 8

Influence of FOMC Members' Inflation Experiences on the Target Federal Funds Rate

The sample period is from the 8/18/1987 to 6/28/2007. The dependent variable is the target federal funds rate set at the FOMC meeting closest to the middle of the quarter t . The experience-based forecast is the average of FOMC members' experienced-based 4-quarter forecast of inflation based on CPI data leading up to the end of quarter $t - 1$, calculated as in Table 3. The staff's core inflation forecast is from end of quarter $t - 1$ to end of quarter $t + 3$ based on the core CPI before 2/1/2000 and the core PCE thereafter. The staff's output gap forecast at quarter t is the forecast for quarter $t + 3$. The staff's forecasts of CPI/PCE and of the output gap are from the Philadelphia Fed Greenbook data set. Lagged fed funds rate target is the federal fund funds rate target from the previous quarter's meeting. Columns (i) to (iii) report the OLS estimates based on (16). Columns (iv) and (v) report the estimates of β_e , β_π , β_y , ρ , and c from non-linear least-squares regressions as specified in (19). Columns (iii) and (v) include a proxy for \bar{z}_t , the linear combination of five FOMC-member characteristics and their interaction with inflation and unemployment estimated from voting data as reported in the Appendix in Table A.2. In parentheses, we report Newey-West standard errors with six lags from column (i) to (iii), and zero lags in column (iv) and (v).

	(i)	(ii)	(iii)	(iv)	(v)
Experience-based inflation forecast	-	0.38	0.61	0.46	0.44
	-	(0.21)	(0.24)	(0.21)	(0.21)
Staff's core inflation forecast	1.51	1.27	1.44	1.27	1.25
	(0.13)	(0.23)	(0.23)	(0.17)	(0.20)
Staff's output gap forecast	0.67	0.69	0.46	0.98	1.00
	(0.06)	(0.06)	(0.10)	(0.08)	(0.15)
Lagged federal funds rate target	-	-	-	0.68	0.69
	-	-	-	(0.04)	(0.04)
Intercept	0.80	0.11	2.17	-0.03	-0.08
	(0.44)	(0.36)	(0.86)	(0.16)	(0.42)
Member characteristics	N	N	Y	N	Y
Method	OLS	OLS	OLS	NLS	NLS
Observations	80	80	80	80	80
Adjusted R^2	85.8%	86.5%	87.7%	97.6%	97.6%

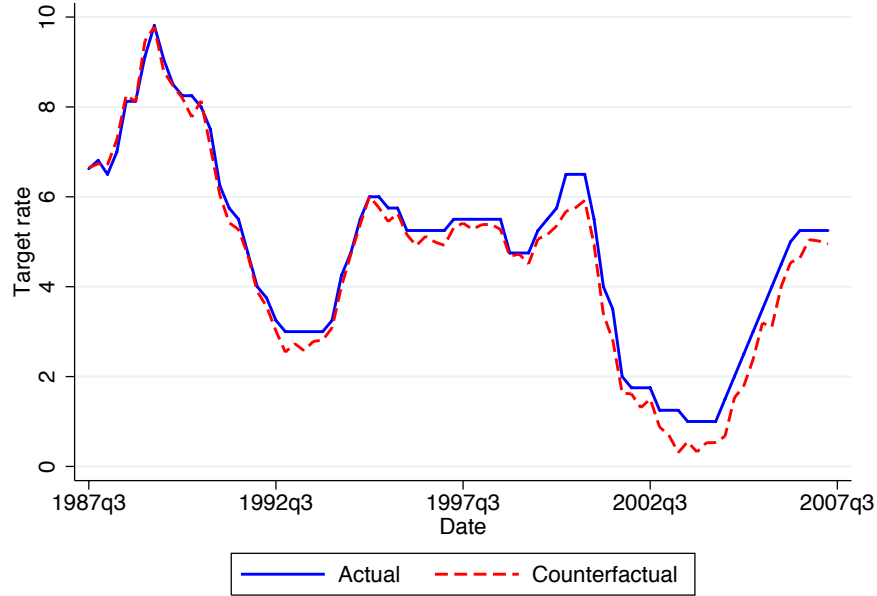


Figure 5
Counterfactual Federal Funds Rate Target (with experience effects removed)

975 Since the parameter of interest, β_e , is now interacted with $1 - \rho$, we estimate (19) with non-
 976 linear least squares. We report the estimates of β_e , β_π , β_y , ρ , and c in columns (iv) and (v)
 977 for the specification without and with the \bar{z}_t variable, respectively.

978 Column (iv) presents the version without the \bar{z}_t variable. Consistent with the existing
 979 literature on federal funds rate inertia, the lagged target rate has a strong predictive power
 980 and absorbs a large portion of the residual. The coefficients on the inflation variables are
 981 not affected much, though. The estimate of β_e of 0.46 (s.e. 0.21) is now a bit higher than
 982 in column (ii), and significantly different from zero at the 5% level. The implied weight on
 983 experienced inflation relative to the staff forecast is now $0.46/(1.27 + 0.46) \approx 0.27$. Turning
 984 to the estimation with the \bar{z}_t variable included in column (v), we find that adding \bar{z}_t has very
 985 little effect on the estimates when the lagged federal funds rate target is included.

986 Overall, the evidence from the time-series of the target federal funds rate is consistent
 987 with the inflation experience effects that we identified in FOMC members' heterogeneous
 988 forecasts, voting decisions, and wording of speeches.

989 To assess the magnitude of this effect, we can compare these estimate to the those from
990 the inflation forecast regressions in Table 1. There, we found that members put a weight of
991 about 37-40% weight on their experience-based forecasts. It is reassuring that the weights
992 obtained here, around 25%, are of very similar magnitude.

993 In Figure 5, we illustrate the magnitude of the effect by constructing a counterfactual
994 federal funds rate target path that removes the estimated experience effects from the actual
995 path. To construct the counterfactual path, we take the actual federal funds rate target and
996 subtract the estimated β_e from column (ii) times the difference between FOMC members'
997 average experience-based forecast and the Greenbook forecast of inflation. This counterfac-
998 tual path represents the target that the FOMC would have chosen if its members had relied
999 only on the staff forecast, not on their own inflation experiences—at least if we abstract from
1000 follow-on equilibrium effects.³¹

1001 As the figure shows, the incremental effects of inflation experiences are substantial at
1002 times, but not unreasonably large. In the late 1980s and early 1990s, the effects were small.
1003 At the time, the average experience-based forecast remained very close to the staff's core
1004 inflation forecast. In contrast, in the 2000s the counterfactual federal funds rate target is
1005 often between 50 to 100 basis points lower than the actual federal funds rate.

1006 6. Conclusion

1007 We present novel evidence showing that personal lifetime experiences significantly affect the
1008 inflation forecasts, voting behavior, tone of speeches, and federal funds target rate decisions
1009 of FOMC members. Our findings suggest that heterogeneous inflation experiences generate
1010 heterogeneity in the desired policies and the macroeconomic outlook of FOMC members.
1011 Personal experiences exert this influence even though FOMC members are highly educated

³¹ If the FOMC had chosen a different target rate path, macroeconomic performance would presumably have been different. As a consequence, the inputs to the Taylor rule would have been different, which would in turn have affected the federal funds rate target. Our simple counterfactual analysis does not consider these equilibrium effects, but allows us to get a sense of the magnitude of the experience effects relative to the other drivers of the federal funds rate target.

1012 individuals and receive extensive decision-support from professional staff. In fact, experience
1013 effects help explain to a substantial extent why FOMC members deviate in their inflation
1014 forecasts from the forecasts prepared by Federal Reserve staff.

1015 Our findings add to a growing literature on the role of experience-based heterogeneity
1016 in economic decisions and macroeconomic expectations. While existing studies focus on
1017 decisions and expectations of individual consumers and investors, this study is the first one
1018 to provide evidence of similar experience effects for policy makers.

1019 The evidence in this paper also helps shed light on the behavioral origins of ‘experience
1020 effects.’ The overweighting of personal experiences by individual consumers documented in
1021 the earlier literature could perhaps be explained by informational frictions that restrict the
1022 availability of data they did not experience themselves. For sophisticated policy makers like
1023 the FOMC members in this study, such an explanation seems less plausible. Presumably,
1024 FOMC members are extensively exposed to historical macroeconomic data. Thus, there
1025 seems to be a deeper behavioral reason for why personal experiences get a relatively high
1026 weight in belief formation, even if historical information is easily accessible.

1027 On the policy side, our results add a twist to the practical notion that the choice of a
1028 policy maker can have a long-lasting impact on policy outcomes: To predict a policy maker’s
1029 leanings, it is helpful to look at the person’s prior lifetime experiences. For a given outcome
1030 variable of interest, here inflation, we can calculate their weighted average experience with
1031 (roughly) linearly declining weights, and obtain a directional and quantitative prediction
1032 about their future decision-making. It will be interesting to explore in future research the
1033 extent to which such a model of experience-based learning is helpful in predicting policy
1034 makers’ behavior in other policy areas.

1035 References

1036 Alesina, A. and N. Fuchs-Schündeln (2007). Goodbye Lenin (or Not?): The Effect of
1037 Communism on People’s Preferences. *American Economic Review* 97(4), 1507–1528.

- Apel, M. and M. B. Grimaldi (2014). How Informative Are Central Bank Minutes? *Review of Economics* 65(1), 53–76.
- Baxa, J., R. Horváth, and B. Vašíček (2013). Time-varying Monetary-Policy Rules and Financial Stress: Does Financial Instability Matter for Monetary Policy? *Journal of Financial Stability* 9(1), 117–138.
- Bernanke, B. S. (2010). Monetary Policy and the Housing Bubble. Speech at the Annual Meeting of the American Economic Association.
- Botsch, M. J. and U. Malmendier (2016). Inflation Experiences and Mortgage Choice – Evidence from Residential Mortgages. Working Paper.
- Box, G. E., G. M. Jenkins, G. C. Reinsel, and G. M. Ljung (2015). *Time Series Analysis: Forecasting and Control*. John Wiley & Sons.
- Bray, M. (1982). Learning, Estimation and the Stability of Rational Expectations Equilibria. *Journal of Economic Theory* 26, 318–339.
- Bryan, M. F. and S. G. Cecchetti (1995). The Seasonality of Consumer Prices. *Federal Reserve Bank of Cleveland Economic Review* (Q II), 12–23.
- Chappell, H. W., T. M. Havrilesky, and R. R. McGregor (1993). Partisan Monetary Policies: Presidential Influence Through the Power of Appointment. *Quarterly Journal of Economics*, 185–218.
- Chappell, H. W., T. M. Havrilesky, and R. R. McGregor (1995). Policymakers, Institutions, and Central Bank Decisions. *Journal of Economics and Business* 47(2), 113–136.
- Chappell, H. W. and R. R. McGregor (2000). A Long History of FOMC Voting Behavior. *Southern Economic Journal*, 906–922.
- Chappell, H. W., R. R. McGregor, and T. A. Vermilyea (2005). *Committee Decisions on Monetary Policy: Evidence from Historical Records of the Federal Open Market Committee*. MIT Press.
- Chiang, Y.-M., D. Hirshleifer, Y. Qian, and A. E. Sherman (2011). Do Investors Learn from Experience? Evidence from Frequent IPO Investors. *Review of Financial Studies* 24, 1560–1589.
- Cho, I.-K., N. Williams, and T. J. Sargent (2002). Escaping Nash Inflation. *Review of Economic Studies* 69(1), 1–40.
- Clarida, R., J. Galí, and M. Gertler (1999). The Science of Monetary Policy: A New Keynesian Perspective. *Journal of Economic Literature* 37, 1661–1707.
- Clarida, R., J. Galí, and M. Gertler (2000). Monetary Policy Rules and Macroeconomic Stability: Evidence and Some Theory. *Quarterly Journal of Economics* 115(1), 147–180.
- Coibion, O. and Y. Gorodnichenko (2012). Why Are Target Interest Rate Changes so Persistent? *American Economic Journal. Macroeconomics* 4(4), 126.
- Evans, G. W. and S. Honkapohja (2001). *Learning and Expectations in Macroeconomics*. Princeton, NJ: Princeton University Press.

- Fuchs-Schuendeln, N. and M. Schuendeln (2015). On the endogeneity of political preferences: Evidence from individual experience with democracy. *Science* 347(6226), 1145–1148.
- Gallagher, J. (2014). Learning About an Infrequent Event: Evidence from Flood Insurance Take-Up in the United States. *American Economic Journal: Applied Economics* 6(3), 206–233.
- Gospodinov, N. and B. Wei (2015). A Note on Extracting Inflation Expectations from Market Prices of TIPS and Inflation Derivatives. Working Paper, Federal Reserve Bank of Atlanta.
- Greenwood, R. and S. Nagel (2009). Inexperienced Investors and Bubbles. *Journal of Financial Economics* 93, 239–258.
- Hansen, S. and M. McMahon (2016a). First Impressions Matter: Signalling as a Source of Policy Dynamics. *Review of Economic Studies*, forthcoming.
- Hansen, S. and M. McMahon (2016b). Shocking language: Understanding the macroeconomic effects of central bank communication. *Journal of International Economics* 99, Supplement 1, S114 – S133.
- Hansen, S., M. McMahon, and C. Velasco (2014). *Journal of Monetary Economics* 67(How Experts Decide: Preferences or Private Assessments on a Monetary Policy Committee?), 16–32.
- Harris, M., P. Levine, and C. Spencer (2011). A decade of dissent: explaining the dissent voting behavior of Bank of England MPC members. *Public Choice* 146(3), 413–442.
- Kahn, L. (2010). The Long-Term Labor Market Consequences of Graduating from College in a Bad Economy. *Labor Economics* 17, 303–3016.
- Kaustia, M. and S. Knüpfer (2008). Do Investors Overweight Personal Experience? Evidence from IPO Subscriptions. *Journal of Finance* 63, 2679–2702.
- Koudijs, P. and H.-J. Voth (2016). Leverage and Beliefs: Personal Experience and Risk-Taking in Margin Lending. *The American Economic Review* 106(11), 3367–3400.
- Laudenbach, C., U. Malmendier, and A. Niessen-Ruenzi (2018). The Long-lasting Effects of Experiencing Communism on Financial Risk-Taking. Working Paper.
- Lichter, A., M. Löffler, and S. Siegloch (2016). The Long-Term Costs of Government Surveillance: Insights from Stasi Spying in East Germany. Working Paper.
- Lindsey, D. E. (2003). A Modern History of FOMC Communication: 1975-2002. Working Paper, Federal Reserve Board.
- Lucca, D. O. and F. Trebbi (2011). Measuring Central Bank Communication: An Automated Approach with Application to FOMC Statements. Working Paper 15367, National Bureau of Economic Research.
- Malmendier, U. and S. Nagel (2011). Depression Babies: Do Macroeconomic Experiences Affect Risk-Taking? *Quarterly Journal of Economics* 126, 373–416.
- Malmendier, U. and S. Nagel (2016). Learning from Inflation Experiences. *Quarterly Journal of Economics* 131(1), 53–87.

- Malmendier, U. and L. S. Shen (2017). Scarred Consumption. Working Paper.
- Malmendier, U. and A. Steiny (2017). Buy or Rent? The Role of Lifetime Experiences of Macroeconomic Shocks within and across Countries. Working Paper.
- Malmendier, U. and G. Tate (2005). CEO Overconfidence and Corporate Investment. *Journal of Finance* 60(6), 2661–2700.
- Malmendier, U., G. Tate, and J. Yan (2011). Overconfidence and Early-life Experiences: The Effect of Managerial Traits on Corporate Financial Policies. *Journal of Finance* 66(5), 1687–1733.
- Marcet, A. and J. Sargent, Thomas (1989). Convergence of Least Squares Learning Mechanisms in Self-Referential Linear Stochastic Models. *Journal of Economic Theory* 48, 337–368.
- Meade, E. E. and D. Stasavage (2008). Publicity of Debate and the Incentive to Dissent: Evidence from the US Federal Reserve. *Economic Journal* 118(528), 695–717.
- Mehra, Y. P. and B. Sawhney (2010). Inflation Measure, Taylor Rules, and the Greenspan-Bernanke Years. *FRB Richmond Economic Quarterly* 96(2), 123–151.
- Mishkin, F. S. (2010). Monetary Policy Flexibility, Risk Management, and Financial Disruptions. *Journal of Asian Economics* 21(3), 242–246.
- Oreopoulos, P., T. von Wachter, and A. Heisz (2012). The Short- and Long-Term Career Effects of Graduating in a Recession: Hysteresis and Heterogeneity in the Market for College Graduates. *American Economic Journal: Applied Economics* (4), 1–29.
- Orphanides, A. (2001). Monetary Policy Rules Based on Real-Time Data. *American Economic Review* 91(4), 964–999.
- Orphanides, A. (2003). Historical Monetary Policy Analysis and the Taylor Rule. *Journal of Monetary Economics* 50(5), 983–1022.
- Primiceri, G. E. (2006). Why Inflation Rose and Fell: Policy-Makers’ Beliefs and US Post-war Stabilization Policy. *Quarterly Journal of Economics* 121(3), 867–901.
- Reifschneider, D. L., D. J. Stockton, and D. W. Wilcox (1997). Econometric models and the monetary policy process. *Carnegie-Rochester Conference Series on Public Policy* 47, 1 – 37.
- Reis, R. (2013). Central Bank Design. *Journal of Economic Perspectives* 27(4), 17–43.
- Romer, C. D. and D. H. Romer (2004). Choosing the Federal Reserve Chair: Lessons from History. *The Journal of Economic Perspectives* 18(1), 129–162.
- Romer, C. D. and D. H. Romer (2008). The FOMC versus the Staff: Where Can Monetary Policymakers Add Value? *The American Economic Review*, 230–235.
- Romer, D. H. (2010). A New Data Set on Monetary Policy: The Economic Forecasts of Individual Members of the FOMC. *Journal of Money, Credit and Banking* 42(5), 951–957.
- Rotemberg, J. J. and M. Woodford (1999). Interest Rate Rules in an Estimated Sticky Price Model. In J. B. Taylor (Ed.), *Monetary Policy Rules*. University of Chicago Press.

- 1156 Sargent, T. J. (1993). *Bounded Rationality in Macroeconomics*. Oxford, UK: Clarendon
1157 Press.
- 1158 Sargent, T. J. (1999). *The Conquest of American Inflation*. Princeton, NJ: Princeton Uni-
1159 versity Press.
- 1160 Shiller, R. J. (2005). *Irrational Exuberance*. Princeton, NJ: Princeton University Press.
- 1161 Sibert, A. (2006). Central Banking by Committee. *International Finance* 9(2), 145–168.
- 1162 Stock, J. H. and M. W. Watson (2009). Phillips Curve Inflation Forecasts. In L. J. O. G.
1163 Fuhrer J, Kodrzycki Y (Ed.), *Understanding Inflation and the Implications for Mone-*
1164 *tary Policy*, pp. 99–202. Cambridge: MIT Press.
- 1165 Strahilevitz, M., T. Odean, and B. Barber (2011). Once Burned, Twice Shy: How Naïve
1166 Learning, Counterfactuals, and Regret Affect the Repurchase of Stocks Previously Sold.
1167 *Journal of Marketing Research* 48, 102–120.
- 1168 Taylor, J. B. (1993). Discretion versus Policy Rules in Practice. *Carnegie-Rochester Con-*
1169 *ference Series on Public Policy* 39, 195–214.
- 1170 Thornton, D. L. and D. C. Wheelock (2014). Making Sense of Dissents: A History of
1171 FOMC Dissents. *Federal Reserve Bank of St. Louis Review* 96, 213–227.
- 1172 Vissing-Jorgensen, A. (2003). Perspectives on Behavioral Finance: Does "Irrationality"
1173 Disappear with Wealth? Evidence from Expectations and Actions. In *NBER Macroe-*
1174 *conomics Annual*.
- 1175 Washington, E. L. (2008). Female Socialization: How Daughters Affect Their Legislator
1176 Fathers. *American Economic Review* 98(1), 311–32.
- 1177 Williams, R. (2006). Generalized Ordered Logit/Partial Proportional Odds Models for
1178 Ordinal Dependent Variables. *Stata Journal* 6(1), 58–82.

Appendix for Online Publication

A. Evolution of Perceived Law of Motion Parameters

We illustrate the experience-based belief-updating mechanism by showing how individuals' estimates of the parameters of the perceived law of motion (1) evolve over time. Figure A.1 presents the estimates of persistence (autocorrelation) ϕ_1 and of the long-run mean inflation rate $\mu = \frac{\alpha}{1-\phi_1-\phi_4+\phi_5}$ obtained from the learning algorithm described in the main text with $\theta = 3.044$, separately for individuals of a few selected ages, 45, 60, and 75.

As the figure shows, the perceived mean rises until 1980 and then declines, while the path of perceived persistence is flatter but also increases around 1980 and then drops dramatically after 2000. Both graphs reveal that the assessments of younger individuals are more volatile than those of older individuals: In 1980s, younger individuals perceived a higher mean than older individuals, while after 2000, the perceived mean of younger individuals falls below that of older individuals. The same pattern also holds for the perceived persistence.

B. Views about structural parameters implicit in experience-based forecasts

FOMC members' experience-based subjective perception of inflation process parameters can be given a structural interpretation if one takes a stand on a particular macroeconomic model that may be underlying their beliefs. Consider, for example, the canonical New Keynesian rational expectations model reviewed in Clarida, Galí, and Gertler (1999), comprised of a consumption Euler equation (IS curve) with an AR(1) demand disturbance w_t ,

$$y_t - y^* = -\frac{1}{\gamma} (i_t - E_t \pi_{t+1} - r^*) + E_t [y_t - y^*] + w_t, \quad w_t = \rho_w w_{t-1} + \xi_{w,t}, \quad (\text{A.1})$$

a Phillips curve with an AR(1) cost-push shock v_t ,

$$\pi_t - \pi^* = \chi(y_t - y^*) + \beta E_t [\pi_{t+1} - \pi^*] + v_t, \quad v_t = \rho_v v_{t-1} + \xi_{v,t}, \quad (\text{A.2})$$

where $\xi_{w,t}$ and $\xi_{v,t}$ are mean-zero and IID, and a monetary authority that maximizes

$$-\frac{1}{2} E_t \left\{ \sum_{i=1}^{\infty} \beta^i [\psi(y_{t+i} - y^*)^2 + (\pi_{t+i} - \pi^*)^2] \right\}. \quad (\text{A.3})$$

Clarida, Galí, and Gertler (1999) show that the optimal discretionary policy rule in this model is

$$i_t = r^* + \pi^* + \lambda E_t (\pi_{t+1} - \pi^*) + \gamma w_t, \quad \lambda = 1 + \frac{(1 - \rho_v) \chi \gamma}{\rho_v \psi}, \quad (\text{A.4})$$

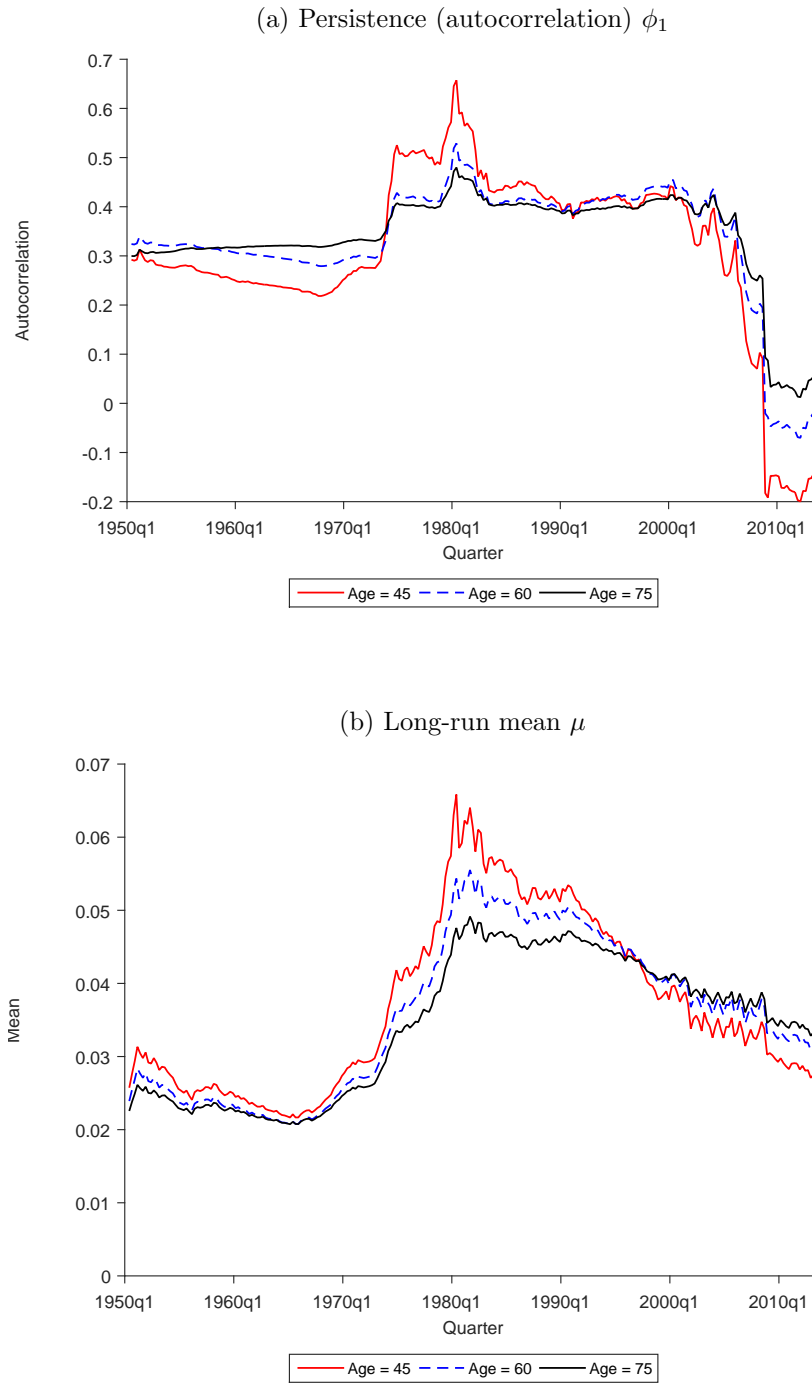


Figure A.1
Mixed Seasonal AR(1) Model Estimates
(with $\theta = 3.044$ at ages 45, 60, and 75)

1201 and the resulting equilibrium inflation process has AR(1) dynamics

$$\pi_{t+1} = \pi^* + \rho_v(\pi_t - \pi^*) + \psi q \rho_v \xi_{v,t+1}, \quad q = \frac{1}{\chi^2 + \psi(1 - \beta \rho_v)}. \quad (\text{A.5})$$

1202 If one takes this model as the one that FOMC members may have in mind, implicitly, when
 1203 forming opinions about future inflation, then experience-based estimates of the long-run mean
 1204 of inflation correspond to an implicit view about the inflation target π^* , their estimates of
 1205 the autocorrelation of inflation correspond to an implicit view about the autocorrelation of
 1206 cost-push shocks ρ_v , and their views about the variance of inflation shocks reflect ρ_v , as well
 1207 as the slope of the Phillips curve χ , the strength of expectations effects in the Phillips curve
 1208 β , and the central bank's weight on inflation stabilization ψ .

1209 C. First-order Taylor approximation of the Subjective Taylor Rule

1210 We start from the subjective Taylor rule in equation (9) and substitute the linear specifications
 1211 in (10) to obtain

$$\begin{aligned} i_{j,t} = & r + (x_{j,t} - \mu_x)' \alpha_3 + \pi^* + (x_{j,t} - \mu_x)' \alpha_1 \\ & + (\lambda_0 + (x_{j,t} - \mu_x)' \lambda_1) [\omega \pi_{j,t+1|t}^e + (1 - \omega) \pi_t - \pi^* - (x_{j,t} - \mu_x)' \alpha_1] \\ & + (\gamma_0 + (x_{j,t} - \mu_x)' \gamma_1) [y_t - y^* - (x_{j,t} - \mu_x)' \alpha_2]. \end{aligned} \quad (\text{A.6})$$

1212 We then perform a first-order Taylor approximation of $i_{j,t}$ as a function of $(\pi_{j,t+1|t}^e, x_{j,t}')$
 1213 around (π_t, μ_x') , which yields

$$\begin{aligned} i_{j,t} \approx & r + \pi^* + \lambda_0(\pi_t - \pi^*) + \gamma_0(y_t - y^*) + (\pi_{j,t+1|t}^e - \pi_t) \omega \lambda_0 \\ & + (x_{j,t} - \mu_x)' [\alpha_3 + \alpha_1 - \lambda_0 \alpha_1 - \gamma_0 \alpha_2 + \lambda_1(\pi_t - \pi^*) + \gamma_1(y_t - y^*)]. \end{aligned} \quad (\text{A.7})$$

1214 We can rewrite this expression as

$$\begin{aligned} i_{j,t} \approx & a_0 + [\lambda_0(1 - \omega) - \mu_x' \lambda_1] \pi_t + (\gamma_0 - \mu_x' \gamma_1)(y_t - y^*) \\ & + \lambda_0 \omega \pi_{j,t+1|t}^e + \kappa' x_{j,t} + \pi_t x_{j,t}' \lambda_1 + (y_t - y^*) x_{j,t}' \gamma_1, \end{aligned} \quad (\text{A.8})$$

where

$$\begin{aligned} a_0 = & r + \pi^*(1 - \lambda_0) - \mu_x'(\alpha_3 + \alpha_1 - \lambda_0 \alpha_1 - \gamma_0 \alpha_2 - \lambda_1 \pi^*), \\ \kappa = & \alpha_3 + \alpha_1 - \lambda_0 \alpha_1 - \gamma_0 \alpha_2 - \pi^* \lambda_1. \end{aligned}$$

1215 Denoting the first three terms on the right-hand side of (A.8) as a_t , we obtain equation (11)
 1216 in the main text. Defining

$$\beta_0 = a_0, \quad \beta_e = \lambda_0 \omega, \quad \beta_\pi = \lambda_0(1 - \omega) - \mu_x' \lambda_1, \quad \beta_y = \gamma_0 - \mu_x' \gamma_1, \quad (\text{A.9})$$

1217 and averaging across FOMC members at meeting time t yields equation (16) in the text.

D. Vote Sample Construction

Our sample of FOMC votes starts in 1951, after the official reinstatement of the Federal Reserve Bank's independence in the Treasury-Federal Reserve agreement of March 4, 1951. During our sample period from March 1951 to January 2014, eight Fed Chairmen lead the FOMC: McCabe (4/1948 to 4/1951), Martin (4/1951 to 1/1970), Burns (2/1970 to 3/1978), Miller (3/1978 to 8/1979), Volcker (8/1979 to 8/1987), Greenspan (8/1987 to 1/2006), and Bernanke (2/2006 to 1/2014).

The data set is constructed from two main sources. First, for meetings before January 1966 and after January 1997, we collect information on the votes from the FOMC meeting statements available at <http://www.federalreserve.gov/monetarypolicy/fomccalendars.htm>. Second, for meetings between January 1966 and December 1996, we use the data from Chappell, McGregor, and Vermilyea (2005), available at <http://professorchappell.com/Data/Book/index.htm>. In this latter data, we correct one coding error: In the meeting on 11/5/1985, governor Seger cast a dovish dissent (-1); the original data set had her vote coded as consent (0).

We also note several discrepancies between our sample and the data employed by Thornton and Wheelock (2014) in their analysis of votes in the Federal Reserve Bank of St. Louis Review:

- For the meeting on 10/3/1961, the Fed Review data records one dissent. We find no dissent reported in the meeting minutes.
- For the meeting on 2/9/1983, the Fed Review data records one dissent. We find four dissents reported in the minutes.
- Other discrepancies reflect dissents that occurred in conference calls (no separate Record of Policy Actions was released), which are not included in our sample. Our sample does include nine conference calls (94 total votes and 2 dissents), after which a separate Record of Policy Actions/Statement was available. We exclude those from the baseline sample. Including them does not alter the results.

We further exclude five votes by the two members who voted less than five times during their tenure with the FOMC, Paul Miller and Jamie Stewart. Mr. Miller only had one vote because he died in office (on Oct. 21, 1954), less than three month after he was appointed to the Board of Governors (on Aug. 13, 1954). Mr. Stewart cast four votes as the acting governor, when he was the first vice president of New York Fed, from June through December 2003, during which the position of New York Fed president was vacant after McDonough resigned in 2003 and before his successor Geithner took place in Nov. 2003.

After the above corrections (and excluding votes from conference calls), our sample contains 160 dovish dissents, 265 hawkish dissents, and 8 un-codeable dissents between 3/8/1951 to 1/29/2014.³² The eight un-codeable dissents are as follows:

- In the 12/19/1961 meeting, Robertson dissented with the reason explained as follows: *“While Mr. Robertson’s analysis of the economic situation and the proper direction of*

³² There are 13 additional dissents that occurred between 1936 and 1950, and two dissenting votes were cast during the nine conference calls in our sample. Neither are included in our data.

policy was the same in its essentials as that of the majority, he voted against adoption of this directive on the grounds that it was undesirable to tie monetary policy to the bill rate.” See www.federalreserve.gov/monetarypolicy/files/fomcropa19611219.pdf.

- In the 7/30/1963 meeting, Bopp dissented with the reason explained as follows: “Mr. Bopp stated that he had voted favorably on the policy directive at the July 9 meeting because it seemed to him that the use of the different instruments of monetary policy should be consistent and an increase in the discount rate was then imminent. Under such circumstances, it had seemed undesirable to reverse what had taken place in terms of yields only to reverse again. His vote, therefore, was essentially a vote on tactics. As to the future, it was still an open question whether short-term rates could be maintained at the new levels, and reserve availability at the old. Under these conditions, he agreed with the view that it would be desirable to maintain essentially an even keel for the time being, and to supply reserves through purchases of coupon issues, selling bills if necessary. In his opinion, emphasis should be placed on the availability of reserves.” See www.federalreserve.gov/monetarypolicy/files/fomchistmin19630730.pdf.
- In the 12/12/1967 meeting, Maisel dissented with the reason explained as follows: “Mr. Maisel dissented from this action in part because he thought the directive was susceptible to an interpretation under which growth in member bank reserves and bank deposits would be slowed too abruptly, and perhaps succeeded by contraction. He favored seeking growth rates in reserves, deposits, and bank credit considerably below the average rates thus far in 1967, but still high enough to facilitate expansion in GNP at a somewhat faster rate than had prevailed on average in the first three quarters of the year. He noted that whether or not interest rates would rise further under the course he advocated would depend upon the strength of market demands for funds in relation to the supplies that would be available under such a Committee policy. Mr. Maisel also thought that the statement of the Committee’s general policy stance contained in today’s directive had far too narrow a focus; in particular, he objected to the omission of reference to the basic policy goal of facilitating sustainable economic expansion. This omission resulted from the substitution of language stating that it was the Committee’s policy “to foster financial conditions conducive to resistance of inflationary pressures and progress toward reasonable equilibrium in the country’s balance of payments” for the language of other recent directives stating that it was the Committee’s policy “to foster financial conditions, including bank credit growth, conducive to sustainable economic expansion, recognizing the need for reasonable price stability for both domestic and balance of payments purposes.” See www.federalreserve.gov/monetarypolicy/files/fomcropa19671212.pdf.
- In the 1/11/1972 meeting, Brimmer dissented with the reason explained as follows: “Mr. Brimmer shared the majority’s views concerning broad objectives of policy at this time, and he indicated that he would have voted favorably on the directive were it not for the decision to give special emphasis to total reserves as an operating target during coming weeks. In his judgment the Committee should have had more discussion of the implications of that decision, and in any case it should have postponed the decision until after it had held a contemplated meeting to be devoted primarily to discussion

of its general procedures with respect to operating targets.” See www.federalreserve.gov/monetarypolicy/files/fomcropa19720111.pdf.

- In the 7/17/1973 meeting, Francis dissented with the reason explained as follows: “Mr. Francis dissented from this action not because he disagreed with the objectives of the policy adopted by the Committee but because he believed that—as had proved to be the case following other recent meetings—the objectives would not be achieved because of the constraint on money market conditions.” See www.federalreserve.gov/monetarypolicy/files/fomcropa19730717.pdf.
- In the 7/20/1976 meeting, Volcker dissented with the reason explained as follows: “Mr. Volcker dissented from this action because in the present circumstances he would not wish to raise or lower the Federal funds rate by as much as 1/2 of a percentage point—a change that might be interpreted as a strong signal of a change in policy and that could have repercussions in financial markets—in response merely to short-term fluctuations in the monetary aggregates that might well prove transient.” See www.federalreserve.gov/monetarypolicy/files/fomcropa19760720.pdf.
- In the 12/22/1981 meeting, Soloman dissented with the reason explained as follows: “Mr. Solomon dissented from this action because he felt it was particularly important at the beginning of an annual target period that the Committee not formulate its directive in terms that conveyed an unrealistic sense of precision. In his view, the directive language referring to the November-to-March growth rates in M1 and M2 did seem to convey such a sense.” See www.federalreserve.gov/monetarypolicy/files/fomcropa19811222.pdf.
- In the 2/9/1983 meeting, Horn dissented with the reason explained as follows: “Mr. Black and Mrs. Horn dissented from this action because they preferred to give more weight to M1 as a policy objective. While recognizing the difficulties in interpreting M1 currently, they believed that over time M1 was more reliably related to the Committee’s ultimate economic objectives than were the broader aggregates and that it constituted a better basis for setting appropriate paths for reserve growth. They also favored reemphasizing M1 because they viewed it as a more controllable aggregate. In addition, Mr. Black indicated that he saw a need for lower target ranges, but he wanted to reduce monetary expansion gradually to avert dislocative effects.” See www.federalreserve.gov/monetarypolicy/files/fomcropa19830209.pdf. We record Black’s vote as hawkish (+1).

As we note in the main text, four members of the FOMC were both regional Fed presidents and governors at some point, and we account for their varying roles in our empirical analysis. These four members are: Phillip Coldwell (Dallas Fed President from 2/68 to 10/74 and governor from 10/74 to 2/80), Oliver Powell (governor from 9/50 to 6/52 and Minneapolis Fed President from 7/52 to 3/57), Paul Volcker (NY Fed president from 5/75 to 8/79 and Fed Chairman from 8/79 to 11/87), and Janet Yellen (governor from 8/94 to 2/97, SF Fed president from 6/04 to 10/10, and then again governor since 10/2010, including her role as Fed Chairwoman).

E. Mixed Inflation Process with a Hyperinflation Regime

This section presents an alternative approach for integrating Henry Wallich's hyperinflation experiences into the estimation.

We assume that every period, inflation is drawn from the following mixed process with two regimes, one for hyperinflation, which takes place with probability p , and one for non-hyperinflationary periods

$$\pi_{t+1} = \mu + u_{t+1} \quad \text{with probability } p, \quad (\text{A.10})$$

$$\pi_{t+1} = \alpha + \phi\pi_t + e_{t+1} \quad \text{with probability } 1 - p, \quad (\text{A.11})$$

where $E_t[u_{t+1}] = 0$ and $E_t[e_{t+1}] = 0$. Therefore, μ is the expected value of π_{t+1} conditional on a hyperinflation occurring, and we can define

$$\mu_0 = \frac{\alpha}{1 - \phi} \quad (\text{A.12})$$

as the expected value conditional on no hyperinflation. With known parameters, a forecast conditional on observed inflation would be

$$E_t[\pi_{t+1}] = p\mu + (1 - p)(\alpha + \phi\pi_t) = p(\mu - \mu_0) + \alpha + \phi\pi_t - p(\alpha + \phi\pi_t - \mu_0). \quad (\text{A.13})$$

For small hyperinflation probabilities, the last term $p(\alpha + \phi\pi_t - \mu_0)$ is tiny relative to the others ($\mu - \mu_0$ is orders of magnitude bigger than to $\alpha + \phi\pi_t - \mu_0$). Thus, we can approximate,

$$E_t[\pi_{t+1}] \approx p(\mu - \mu_0) + \alpha + \phi\pi_t \quad (\text{A.14})$$

i.e., the usual AR(1) forecast conditional on no hyperinflation plus an upward adjustment to the long-run mean to account for the fact that a hyperinflation might occur with probability p . This is the forecast we want to construct (in an experience-based way).

Parameters can now be estimated as follows: α and ϕ can be estimated in the usual way (the same way we do it for other FOMC members) from a sample excluding hyperinflation periods, for which we simply take US data only (mixing in some early German data would not make a difference as long as the hyperinflation years are excluded). To estimate $p(\mu - \mu_0)$, we can use the fact that the mean from sampling data from both regimes (i.e., German data for Wallich's youth years included) is

$$E[\pi_t] = p\mu + (1 - p)\mu_0 \quad (\text{A.15})$$

which implies

$$p(\mu - \mu_0) = E[\pi_t] - \mu_0 \quad (\text{A.16})$$

We can estimate $E[\pi_t]$ as the simple mean estimate from mixed German-US data. And $\mu_0 = \alpha/(1 - \phi)$ follows from the AR(1) estimates based on US data. Combining these gives us an estimate for $p(\mu - \mu_0)$ which we can then add to the no-hyperinflation AR(1) forecast $\alpha + \phi\pi_t$ to get $E_t[\pi_{t+1}]$ as in (A.14). For simplicity of exposition, we have illustrated the approach above with a simple AR(1) for the non-hyperinflation regime. But in our estimation, we instead use a mixed seasonal Ar(1) as in (1) in the main text.

Table A.1
Experience-based Inflation Forecasts and FOMC Voting Behavior

This table repeats the estimation from Table 3 in the main text, but with experience-forecasts for Henry Wallich calculated using the mixed inflation process with a hyperinflation regime.

	Ordered Probit		Ordered Probit “de-chaired”	
	(i)	(ii)	(iii)	(iv)
Experienced-Based Forecast	79.5 (23.3)	75.3 (23.8)	47.8 (11.6)	48.0 (12.1)
Meeting FE Thresholds	Yes Role $\times I_{>93}$	Yes All	No Role $\times I_{>93}$	No All
Observations	6,707	6,707	6,707	6,707
Pseudo R^2	0.394	0.396	0.108	0.112
APE of Experienced-Based Forecast:				
Dovish Dissent	-2.8	-2.7	-2.5	-2.5
Consent	-1.6	-1.5	-1.3	-1.2
Hawkish Dissent	4.4	4.1	3.7	3.7

Table A.1 reports the results. Apart from the use of the mixed inflation process and the absence of the Wallich dummy, everything else is the same as in Table 3 in the main text. As Table A.1 shows, there is still a strong and statistically highly significant effect on voting decisions. The APE show at the bottom of the table are somewhat smaller than in Table 3 in the main text, but with Wallich’s hyperinflation experiences integrated through the mixed inflation process, the average within-meeting dispersion is now 0.15 percentage points (instead of the 0.10 that we had earlier). A one standard deviation change now translates into a change in the probability of hawkish or dovish dissent of about 1/6 of the unconditional dissent probabilities (compared with between 1/4 to 1/3 earlier).

F. Fixed-Threshold Ordered Probit Estimates

This section presents estimates from an ordered probit model as in (12), but with fixed dissent thresholds. Note that we use the fitted values from this estimation to construct the \bar{z}_t variable in (16), which is the basis for the results on the Fed Funds Rate target presented in Table 8.

Table A.2 presents the ordered probit estimates. In column (i) we employ time fixed effects, and in column (ii) we express explanatory variables values as deviations from their values for the chairperson. The results are similar to the corresponding ones in Table 3 in the main text.

This fixed-threshold specification also offers the opportunity to examine the coefficients

Table A.2
Experience-based Inflation Forecasts and FOMC voting behavior: Simple Ordered Probit
without Characteristics-Dependent Thresholds

The sample period is from March 8, 1951 to January 29, 2014. The experience-based inflation forecast for each member at each meeting is calculated by recursively estimating a mixed seasonal AR(1) model using the member's lifetime history of inflation with $\theta = 3.044$, as described in Section 2.1. The *Wallich Dummy* equals one if the member is Henry Wallich; 0 otherwise. The average partial effects (APE) reported at the bottom of the table are calculated by taking the partial derivative of the probability of a given voting category with respect to the experience-based inflation forecast at each sample observation and then averaging these partial derivatives across the whole sample. In parentheses, we report the standard error based on two-way clustering by both member and meeting.

	Ordered Probit	Ordered Probit "de-chaired"
	(i)	(ii)
Experienced-Based Forecast	192.2 (60.0)	89.7 (36.1)
Wallich Dummy	1.6 (0.4)	1.2 (0.2)
Meeting FE	Yes	No
Observations	6,707	6,707
Pseudo R^2	37.0%	8.2%
APE of Experienced-Based Forecast:		
Dovish Dissent	-7.0	-4.7
Consent	-4.1	-2.3
Hawkish Dissent	11.1	7.1
APE of Wallich Dummy:		
Dovish Dissent	-0.06	-0.06
Consent	-0.03	-0.03
Hawkish Dissent	0.09	0.09

of the control variables. In the characteristics-dependent specification they are difficult to interpret because their effect on the dissent threshold is intertwined with their effect on the conditional mean of the latent variable and hence the voting decision. Table A.3 presents the coefficient estimates, including those for the interactions. Directionally, the results are broadly sensible. For example, FOMC members put more weight on current inflation and less weight on unemployment if they are older, are regional Fed presidents, male, appointed when a Republican U.S. president was in office, and are not in the same party as the current president. However, many of these estimates are statistically not significantly different from zero. To interpret the direct effect of the characteristics, we need to add the interacted terms evaluated at particular values of CPI inflation (e.g., 2%) and unemployment (e.g., 6%). Doing so reveals that there is a fairly strong association of hawkishness with regional president role and appointment while a Republican president was in office, while female gender is associated with a more dovish voting behavior.

G. Speech Sample Construction

The FRASER economic history database at the Federal Reserve Bank of St. Louis maintains a digital library of speeches of past and current FOMC members. To construct our sample of speeches, we first download the HTML source code of the webpage listing the *Statements and Speeches of Federal Reserve Officials*. The source code contains a list of the FOMC members and their record IDs. (See the screenshot in Figure A.2a.) Each record ID uniquely identifies a webpage with the links to all speeches of the respective FOMC member. We use the record IDs to download the HTML source code of those webpages (see Figure A.2b), and then extract the so-called issue IDs of the individual speeches. The issue IDs, in turn, link to the webpages containing the metadata of the speeches, including the links to the pdfs (see Figure A.2c). We collect all links to the pdfs of the speeches in a single text document and parse the document to the *wget* function, which downloads the pdf files.³³ In addition, we hand-collected speeches from the websites of the regional FRBs for the regional presidents.

To search the speeches for hawkish and dovish language, the downloaded pdfs are converted to text format using a unix shell executable script. During this step, the speech text is cleaned of reference sections, typographic ligature, and duplicates of the speech header or title which is often repeated on every page of the pdfs. (Even though some of the speeches are photographs of the manuscript, the images are already translated into text and we do not have to run OCR for any of the cases.) We restructure the text into sequences of five adjacent words, and then select the relevant subset of goal-centered five-grams. For example, words from the sentence “Inflation continued to be well behaved, and in fact with talk of lower oil prices there was even a whiff of deflation.” said by Thomas Meltzer in a 1985 address to the Harry J. Loman Foundation, initially show up in twenty nine different five-grams. Only two of these five grams are kept and searched for words from the *attitudes* list: “[two words from the previous sentence]. Inflation continued to” and “of lower oil prices there”. After searching for these attitude words, the second five-gram is tagged as dovish, because it contains the word “lower” from the *attitudes* list, and the first is not tagged at all.

³³ We invoke the *wget* function from www.gnu.org/software/wget/Overview via OS X Terminal.

Table A.3

Experience-based Inflation Forecasts and FOMC voting behavior: All coefficients

The sample period is from March 8, 1951 to January 29, 2014. The variables are defined as described in the main text. In parentheses we report standard errors based on two-way clustering by both member and meeting.

	Ordered Probit	Ordered Probit - "de-chaired"
Experienced-Based Forecast	192.24 (60.04)	89.66 (36.12)
Wallich Dummy	1.57 (0.37)	1.16 (0.18)
Age	-0.04 (0.03)	-0.03 (0.01)
Fed Role	0.41 (0.36)	0.15 (0.28)
Gender	0.01 (0.87)	0.09 (0.58)
Party	1.09 (0.46)	0.47 (0.29)
Same Party	-0.09 (0.43)	-0.42 (0.25)
Fed Role $\times \mathbb{1}_{\text{Post1993}}$	-0.11 (0.25)	-0.03 (0.20)
CPI \times Age	0.45 (0.30)	0.44 (0.14)
CPI \times Fed Role	4.23 (3.88)	5.42 (1.96)
CPI \times Gender	12.44 (6.21)	6.22 (3.23)
CPI \times Party	-5.83 (4.08)	-1.72 (2.57)
CPI \times Same Party	-0.88 (3.68)	-2.85 (1.88)
Unemp. rate \times Age	-0.67 (0.45)	-0.39 (0.25)
Unemp. rate \times Fed Role	-1.21 (5.90)	-2.25 (4.89)
Unemp. rate \times Gender	-9.87 (11.54)	-4.49 (6.58)
Unemp. rate \times Party	9.78 (7.61)	5.16 (4.47)
Unemp. rate \times Same Party	0.36 (7.60)	-7.43 (4.31)
Meeting FE	Yes	No
Observations	6707	6707
Pseudo R^2	37.0%	8.2%

```

</span></p>
<li id="record-905" class="issue-list-item">
  <p class="issue-list-item-firstline"><span> Statements and Speeches of Abbot Low Mills
  <input type="hidden" class="record-content-type" value="title">
  <input type="hidden" class="record-id" value="905">
</li>
<li id="record-452" class="issue-list-item">
  <p class="issue-list-item-firstline"><span> Statements and Speeches of Alan Greenspan
  <input type="hidden" class="record-content-type" value="title">
  <input type="hidden" class="record-id" value="452">
</li>
<li id="record-906" class="issue-list-item">
  <p class="issue-list-item-firstline"><span> Statements and Speeches of Alan S. Blinder
  <input type="hidden" class="record-content-type" value="title">
  <input type="hidden" class="record-id" value="906">
</li>
<li id="record-907" class="issue-list-item">
  <p class="issue-list-item-firstline"><span> Statements and Speeches of Alice M. Rivlin
  <input type="hidden" class="record-content-type" value="title">
  <input type="hidden" class="record-id" value="907">
</li>
<li id="record-463" class="issue-list-item">
  <p class="issue-list-item-firstline"><span> Statements and Speeches of Andrew F. Brimmer

```

(a) Step 1: HTML source code of the FRASER webpage for the *Statements and Speeches of Federal Reserve Officials*. The record IDs, highlighted by the box, identify the webpages with all speeches of the respective FOMC member.

```

<input type="hidden" class="issue-id" value="35277">
<li id="issue-35278" class="issue-list-item item-decade-1990">
  <p class="issue-list-item-firstline">1997 | <a href="/title/907#i35278">
    Sustaining CRA's Success
    : Remarks at the Annual Meeting of the National Community Reinvestment Coalition, Washington, D.C.
  </a>
</p>
<input type="hidden" class="issue-id" value="35278">
<li id="issue-35261" class="issue-list-item item-decade-1990">
  <p class="issue-list-item-firstline">1997 | <a href="/title/907#i35261">
    The Challenges of Macroeconomic Policy
    : Remarks at the Annual Meeting of the Eastern Economic Association, Washington, D.C.
  </a>
</p>
<input type="hidden" class="issue-id" value="35261">
<li id="issue-35262" class="issue-list-item item-decade-1990">
  <p class="issue-list-item-firstline">1997 | <a href="/title/907#i35262">
    Appropriate Monetary Policy and the Strong Economy
    : Testimony before the Committee on Banking and Financial Services, U.S. House of Representatives
  </a>
</p>
<input type="hidden" class="issue-id" value="35262">
<li id="issue-35263" class="issue-list-item item-decade-1990">
  <p class="issue-list-item-firstline">1997 | <a href="/title/907#i35263">

```

(b) Step 2: HTML code identified by the record ID obtained in the previous step. The issue IDs, highlighted by the boxes, identify the webpages with the metadata of the speeches of the respective FOMC member, including the links to the pdf files with the speeches.

```

- <modsCollection default:xsi="http://www.loc.gov/standards/mods/v3/mods-3.5.xsd" default:schemaLocation="">
- <mods>
  <genre>speech</genre>
  <language>eng</language>
  <location>
    <url>
      https://fraser.stlouisfed.org/scribd/?item_id=808&filepath=/docs/historical/frbminn/presidents/corrigan/corrigan_19810701.pdf
    </url>
  </location>
  <titleInfo>
    <title>Current Problems and Prospects for the Economy</title>
  </titleInfo>
  <subTitle>
    Statement before the Subcommittee on Conservation, Credit, and Rural Development, Committee on Agriculture, House of Representatives
  </subTitle>
  <titlePartNumber>

```

(c) Step 3: Metadata of a speech, including a link to the pdf (highlighted by the box).

Figure A.2
FRASER Source Code to Obtain Speech PDFs

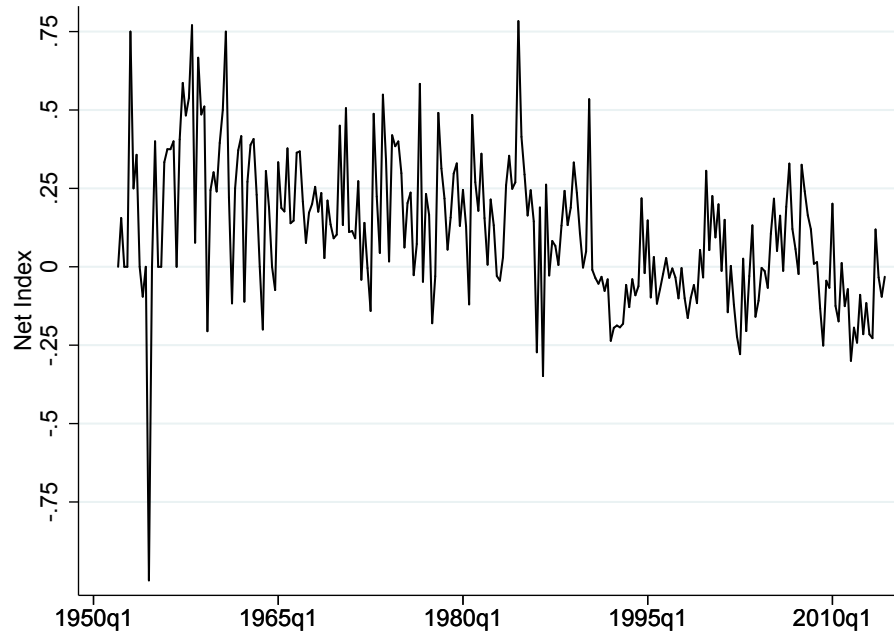


Figure A.3
Net Index Over Time

Notes. The graph depicts the average *Net Index* (using the expanded set of goals) of all speeches in year-quarter.

There is a cluster of short speeches with around 500 n-grams. Checking these speeches by hand reveals that a large fraction are short opening remarks and introductions for other speeches, or short-hand notes for longer speeches instead of full transcripts. Controlling for these short speeches by including an indicator variable for less than 750 n-grams has virtually no effect on the results.

In the main text, we describe the construction of the *Net Index* of speech hawkishness. Figure A.3 plots the time-series of the index. The index decreases slightly over time, especially after 1980. But overall there is fairly strong time-variation without much persistence. This may reflect a considerable amount of measurement noise in *Net Index*. The more muted amplitude of the *Net Index* in later sample years probably reflects the substantially larger number of speeches available, rather than a general trend towards a more neutral language, implying that the mean of *Net Index* contains less measurement error in later years.

As also discussed in the main text, our analysis of FOMC members' choice of words and tone of speeches might warrant further controls for personal characteristics to reduce noise and concerns about correlated omitted variables. We construct control variables for education and prior professional experience. Information on education, including degree type and degree granting institutions, is available from the member biographies provided by the Fed on the Federal Reserve History Gateway website.

Table A.4 shows the summary statistics on the educational background for the 144 FOMC

Table A.4
Summary Statistics on FOMC Members' Educational Background

The table below shows statistics on the educational background for the 144 FOMC members who voted at least 5 times during the meetings from 3/8/1951 to 1/29/2014. Panel A shows every school that awarded the highest degree of at least three members, along with the number of bachelor's and PhD degrees awarded by those schools. Panel B shows the frequency with which each degree type was the highest degree awarded to an FOMC member. All data is from the Federal Reserve History Gateway.

Panel A: Most Common Schools			
School	Highest Degree	PhD	Bachelors
Harvard University	24	10	8
University of Pennsylvania	10	6	4
MIT	7	7	1
University of Michigan	6	4	1
University of Missouri	6	1	3
Indiana University	5	4	2
University of Chicago	4	4	1
John Hopkins University	4	2	0
Stanford University	4	1	3
UCLA	3	3	0
University of Wisconsin	3	3	0
University of California, Berkeley	3	2	3
Yale	3	1	5
University of Virginia	3	1	3
Columbia University	3	1	2
Iowa State University	3	1	1
NYU	3	1	1
Georgetown University	3	0	1

Panel B: Highest Degree		
School	Number of FOMC Members	Percentage
PhD	65	45.1%
JD	22	15.3%
Master's	20	13.9%
Bachelor's	17	11.8%
MBA	15	10.4%
Other	5	3.5%

members in our sample.: 45.1% of members have a PhD as their highest degree, while 15.3% have a law degree, and 10.4% have an MBA. 24 of the 144 members hold their highest degrees from Harvard, ten from the University of Pennsylvania, seven from MIT, and six each from the University of Michigan and the University of Missouri. Harvard has also granted the most PhDs to FOMC members (ten). MIT follows with seven, six members have PhDs from the University of Pennsylvania, and four have PhDs from the Universities of Chicago, Michigan, and Indiana each. 67.4% have their highest degree in economics, or majored in it if their highest degree is a bachelors.

Also from the Federal Reserve History Gateway website, we collect mentions of FOMC members' industry experience prior to their first FOMC meeting. Members are classified as having had, or not had work experience in the financial industry, an academic department, the military, a government agency other than the Federal Reserve or the military, and other industries, e.g. manufacturing. 76 of the 144 members with at least three votes are classified as having financial industry experience, 74 as having worked at another government agency, 62 in academia, 53 in another industry, and 37 as having military experience.

H. Results without Members born before 1913

We replicate the results on voting and the tone of speeches including only FOMC Members born after 1913. These analyses address potential concerns about the methodological change in the inflation series in 1913. As can be seen below, our results remain the same. Our analyses of Fed Funds target rate and MPR inflation forecasts are not affected by this methodological change as they do not use pre-1913 data.

Voting The following three tables replicate the results as in Table 3 to 5 focusing on FOMC Members born after 1913.

Table A.5
Experience-based Inflation Forecasts and FOMC Voting Behavior

The sample period is from March 8, 1951 to January 29, 2014. The sample excludes FOMC Members who were born before 1913. The experience-based inflation forecast for each member at each meeting is calculated by recursively estimating a mixed seasonal AR(1) model using the member's lifetime history of inflation, as described in Section 2.1 (with $\theta = 3.044$). The *Wallich Dummy* equals one if the member is Henry Wallich; 0 otherwise. The average partial effects (APE) reported at the bottom of the table are calculated by taking the partial derivative of the probability of a given voting category with respect to the experience-based inflation forecast at each sample observation and then averaging these partial derivatives across the whole sample. Column (i) and (iii) report the results assuming that the thresholds depend on a) whether the member is a board member or regional president, and b) whether the meeting occurs after Nov. 1993 and the interaction of a) and b). Column (ii) and (iv) report the results assuming that the thresholds depends, in addition, on age, gender, party of president at appointment indicator, and same party as current president indicator. In parentheses we report the standard error based on two-way clustering by both member and meeting.

	Ordered Probit		Ordered Probit "de-chaired"	
	(i)	(ii)	(iii)	(iv)
Experienced-Based Forecast	265.3 (72.6)	289.8 (78.9)	126.6 (42.5)	138.0 (45.3)
Wallich Dummy	1.4 (0.4)	1.3 (0.3)	1.0 (0.2)	0.8 (0.2)
Meeting FE	Yes	Yes	No	No
Thresholds	Role $\times I_{>93}$	All	Role $\times I_{>93}$	All
Observations	4284	4284	4284	4284
Pseudo R^2	38.2%	39.4%	12.0%	13.5%
APE of Experienced-Based Forecast:				
Dovish Dissent	-9.1	-9.8	-6.2	-6.7
Consent	-7.8	-8.3	-4.7	-4.9
Hawkish Dissent	16.9	18.1	11.0	11.7
APE of Wallich Dummy:				
Dovish Dissent	-0.048	-0.042	-0.047	-0.040
Consent	-0.041	-0.036	-0.036	-0.029
Hawkish Dissent	0.089	0.079	0.083	0.069

Table A.6
Experience-based Inflation Forecasts and FOMC voting behavior: Different Sample Periods
with Fixed Ordered Probit Thresholds

The sample excludes FOMC Members who were born before 1913. The experience-based inflation forecast for each member at each meeting is calculated as in Table 3. The *Wallich Dummy* equals one if the member is Henry Wallich; 0 otherwise. The average partial effects (APE) reported at the bottom of the table are calculated by taking the partial derivative of the probability of a given voting category with respect to the experience-based inflation forecast at each sample observation and then averaging these partial derivatives across the whole sample. Column (i) reports the results with all FOMC members prior to November 1993. Column (ii) reports the results with regional Fed presidents only prior to November 1993. Column (iii) reports the results with regional Fed presidents only over the entire sample. Column (iv) reports the results with all FOMC members prior to November 1993 and regional Fed presidents only afterwards. In parentheses we report the standard error based on two-way clustering by both member and meeting.

	All Members pre-1993 (i)	Regional Pres. Only Full Sample (ii)	Regional Pres. Only pre-1993 (iii)	Mixed Members Full Sample (iv)
Expr.-Based Fcst.	282.5 (85.8)	403.4 (107.3)	498.4 (133.9)	288.7 (76.7)
Wallich Dummy	1.4 (0.4)	- -	- -	1.5 (0.4)
Meeting FE	Yes	Yes	Yes	Yes
Observations	2700	2046	1238	3508
Pseudo R^2	35.3%	45.0%	50.5%	36.6%
APE of Expr.-Based Fcst.:				
Dovish Dissent	-13.0	- 7.7	-9.8	-11.5
Consent	-6.9	-24.5	-24.3	-10.2
Hawkish Dissent	19.9	32.2	34.2	21.7
APE of Wallich Dummy:				
Dovish Dissent	-0.065	-	-	-0.058
Consent	-0.035	-	-	-0.052
Hawkish Dissent	0.099	-	-	0.110

Table A.7
Experience-based Inflation Forecast and FOMC voting behavior: Varying Weights on Past Experience

The sample period is from March 8, 1951 to January 29, 2014. The sample excludes FOMC Members who were born before 1913. The ordered probit specification is the same as in column (i) of Table 3, but here with different values of the gain parameter θ in the calculation of the experience-based inflation forecast. The *Wallich Dummy* equals one if the member is Henry Wallich; 0 otherwise. The average partial effects (APE) reported at the bottom of the table are calculated by taking the partial derivative of the probability of a given voting category with respect to the experience-based inflation forecast at each sample observation and then averaging these partial derivatives across the whole sample. We assume that the ordered probit thresholds depend on a) whether the member is a board member or regional president, and b) whether the meeting occurs after Nov. 1993 and the interaction of a) and b). In parentheses we report the standard error based on two-way clustering by both member and meeting.

	$\theta = 3.334$ (i)	$\theta = 2$ (ii)	$\theta = 2.5$ (iii)	$\theta = 3.5$ (iv)	$\theta = 4$ (v)
Experience-Based Forecast	246.9 (71.3)	150.5 (68.0)	231.5 (76.5)	230.6 (69.6)	182.5 (60.6)
Wallich Dummy	1.4 (0.4)	1.4 (0.4)	1.4 (0.4)	1.4 (0.4)	1.4 (0.4)
Meeting FE	Yes	Yes	Yes	Yes	Yes
Observations	4284	4284	4284	4284	4284
Pseudo R^2	38.1%	37.7%	38.0%	38.1%	38.0%
APE of Experienced-Based Forecast					
Dovish Dissent	-8.5	-5.2	-8.0	-7.9	-6.3
Consent	-7.3	-4.5	-6.8	-6.8	-5.4
Hawkish Dissent	15.7	9.7	14.8	14.7	11.7
APE of Wallich Dummy					
Dovish Dissent	-0.048	-0.049	-0.049	-0.048	-0.049
Consent	-0.041	-0.042	-0.041	-0.042	-0.042
Hawkish Dissent	0.089	0.091	0.090	0.090	0.091

1468 **The Tone of FOMC Members' Speeches** The following table replicates the results in
 1469 Table 7 with an focus on FOMC member's born after 1913.

Table A.8

Experience-based Inflation Forecasts and FOMC Members' Tone of Speeches

The sample excludes FOMC Members who were born before 1913. Dependent variable is the *NetIndex* measure of speech hawkishness defined as in equation (15). The experience-based inflation forecast for each member at each meeting is calculated as in Table 3. All estimations include the same controls and interactions with recent CPI inflation and unemployment as in Table 3. In addition, we include controls for education and professional background as explained in the text, except for columns (iii) and (vi) where we instead employ member fixed effects. In columns (ii) and (v), we drop speeches from chairmen. The regressions are estimated with OLS. Standard errors, shown in parentheses, are calculated allowing for two-way clustering by FOMC member and year-quarter.

	Net Index excluding (un)empl.			Net Index including (un)empl.		
	(i)	(ii)	(iii)	(iv)	(v)	(vi)
Experience-Based Fcst.	41.13 (17.91)	55.11 (22.83)	47.84 (19.30)	44.02 (16.07)	61.90 (20.46)	51.38 (17.30)
Wallich dummy	0.14 (0.11)	0.13 (0.12)	- -	0.16 (0.08)	0.14 (0.09)	- -
Member FE	No	No	Yes	No	No	Yes
Year-quarter FE	Yes	Yes	Yes	Yes	Yes	Yes
Chair's speeches dropped	No	Yes	No	No	Yes	No
Industry expr. controls	Yes	Yes	No	Yes	Yes	No
Degree controls	Yes	Yes	No	Yes	Yes	No
Adjusted R^2	3.7%	4.2%	4.6%	3.2%	3.5%	3.6%
Observations	3519	2639	3519	3519	2639	3519

1470 I. Target Federal Funds Rate Regressions with Median and Chair's Experience Measures

1471 The results on experience effects on the fed funds rate target in Table 8 use a measure of
 1472 mean experiences across FOMC members. To address the concern that committee decisions
 1473 do not necessarily reflect the average opinion of the committee's members, we show that our
 1474 results are robust to using the median or the chairman's experience-based forecast, rather
 1475 than the average. We also note that the concern is immaterial in our application as the
 1476 difference between the average experience-based forecast at a meeting and the conventional,
 1477 objective inflation-rate component of the Taylor rule tends to be substantially bigger than
 1478 the differences between FOMC members. As a result, it does not matter much whether we
 1479 use the average, the median, or even any specific FOMC member's experience-based forecast.

Table A.9

Influence of FOMC Members' Inflation Experiences on Target Federal Funds Rate: Median and Chair's Experienced Inflation

The sample period is from the 8/18/1987 to 6/28/2007. The dependent variable is the target federal funds rate set at the FOMC meeting closest to the middle of the quarter t . The experience-based forecast is the median (chair's) experience-based CPI forecast from quarter $t-1$ to quarter $t+3$ at each meeting. The staff's core inflation forecast is from quarter $t-1$ to quarter $t+3$ and represents the core CPI before 2/1/2000 and the core PCE thereafter. The staff's output gap forecast at quarter t is the forecast for quarter $t+3$. The staff's forecasts of CPI/PCE and of the output gap are from the Philadelphia Fed Greenbook data set. Lagged fed funds rate target is the federal funds rate target from the previous quarter. Columns (i) to (iii) report the OLS coefficient estimates for the estimating equation in (16). Columns (iv) and (v) report the estimates of c , β_e , β_π , β_y , and ρ from non-linear least-squares regressions as specified in (19). In parentheses, we report Newey-West standard errors with six lags from column (i) to (iii), and zero lags in column (iv) and (v).

	(i)	(ii)	(iii)	(iv)	(v)	(vi)	(vii)	(viii)
Exper.-based infl. fctst. (median)	0.39 (0.21)	0.62 (0.24)	-	-	0.47 (0.21)	0.46 (0.21)	-	-
Exper.-based infl. fctst. (chair)	-	-	0.40 (0.22)	0.63 (0.24)	-	-	0.47 (0.21)	0.45 (0.21)
Staff's core inflation forecast	1.27 (0.23)	1.44 (0.23)	1.26 (0.23)	1.44 (0.23)	1.26 (0.17)	1.25 (0.20)	1.26 (0.17)	1.25 (0.20)
Staff's output gap forecast	0.69 (0.06)	0.46 (0.10)	0.70 (0.06)	0.46 (0.10)	0.98 (0.07)	1.00 (0.15)	0.98 (0.07)	1.00 (0.15)
Lagged federal funds rate target	-	-	-	-	0.68 (0.04)	0.69 (0.04)	0.68 (0.04)	0.69 (0.04)
Intercept	0.10 (0.35)	2.16 (0.86)	0.10 (0.36)	2.19 (0.86)	-0.03 (0.16)	-0.08 (0.42)	-0.03 (0.16)	-0.08 (0.42)
Member characteristics	N	Y	N	Y	N	Y	N	Y
Method	OLS	OLS	OLS	OLS	NLS	NLS	NLS	NLS
Observations	80	80	80	80	80	80	80	80
Adjusted R^2	86.6%	87.7%	86.6%	87.8%	97.6%	97.6%	97.6%	97.6%

In columns (i) and (ii) of Table A.9, we use the median, and in columns (iii) and (iv) the chairman’s experience-based forecast. As the table show, these changes result in only minor changes in the coefficient estimate compared with Table 8. The same is true when we add the lagged federal funds rate in columns (v) to (viii). The reason is that the time-series variation in the members’ experience-based forecasts relative to the staff forecast is much greater than the dispersion between members’ experience-based forecasts. These results imply that it does not matter much which measure of central tendency of the experience-based forecasts, or which individual experience-based forecast is used.

J. Different Starting Points for Experience Accumulation

This section of the appendix shows that the results are not sensitive to the precise starting point for FOMC members’ experience accumulation. Malmendier and Nagel (2016) showed robustness to the starting point for household inflation expectations. They showed, for example, that when the starting point is set at age 10 rather than at birth, with the gain parameter θ re-estimated, then the overall fit and explanatory power of inflation experiences is essentially unchanged. The reason is that by choosing a different value for θ , the estimation adapts to the post-birth starting point by downweighting earlier data to a lesser degree. The combined effect of different θ and different starting point is that the implied weights on the experienced observations look quite similar to those in the baseline estimation.

For starting point at age 10 rather than at birth, Malmendier and Nagel (2016) estimate $\theta = 2.137$. We use this estimate here to re-run the main results with starting point for experience accumulation set to age 10. Tables A.10, A.11, and A.12 present the results. The coefficients on experienced inflation tend to be a little smaller than in the baseline estimates, but overall there is very little substantive difference to the baseline results reported in the main text.

Table A.10
INFLUENCE OF FOMC MEMBERS' INFLATION EXPERIENCES ON THEIR INFLATION
FORECASTS: EXPERIENCE ACCUMULATION STARTING AT AGE 10

Panel A presents summary statistics for the dependent and explanatory variables in the estimations shown in Panel B. MPR fcst. - staff fcst. is the difference between i) FOMC members' stated inflation projection from the MPR and ii) the most recent Fed Staff's inflation forecast from the Greenbook prior to the February or July FOMC meeting. In February, the horizon of the members' MPR forecasts is over the four quarters until the end of the current year. In July, two horizons are available: four quarters until the end of the current year and the four quarters during next year. From February 2000 on, we add the difference between CPI and PCE inflation rate to each FOMC member forecast. The sample period runs from the first half of 1992 to the second half of 2004. In Panel B, MPR fcst. - staff fcst. is the dependent variable. The explanatory variable is the difference between the i) experience-based forecast $\pi_{j,t+1|t}^e$ for each FOMC member at each meeting, and ii) the Fed staff's inflation forecast. We calculate $\pi_{j,t+1|t}^e$ for each member at each meeting by recursively estimating a seasonal AR(1) model using the member's lifetime history of inflation (starting at age 10), as described in Section 2.1 (with $\theta = 2.137$). In parentheses we report the standard error based on clustering as described in the table.

	(i)	(ii)	(iii)	(iv)
Exp.-based fcst. - staff fcst.	0.37 (0.09)	0.43 (0.12)	0.66 (0.34)	0.51 (0.32)
Member \times fcst. horizon FE	No	Yes	No	No
Member FE	No	No	No	Yes
Meeting \times fcst. horizon FE	No	No	Yes	Yes
Clustered s.e.	Member and Meeting	Member and Meeting	Member	Member
Observations	383	383	383	383
Adjusted R^2	34.9%	38.1%	77.6%	81.4%

Table A.11
 EXPERIENCE-BASED INFLATION FORECASTS AND FOMC VOTING BEHAVIOR:
 EXPERIENCE ACCUMULATION STARTING AT AGE 10

The sample period is March 8, 1951 to January 29, 2014. The experience-based inflation forecast for each member at each meeting is calculated by recursively estimating a seasonal AR(1) model using the member's lifetime history of inflation (starting at age 10), as described in Section 2.1 (with $\theta = 2.137$). The *Wallich Dummy* equals one if the member is Henry Wallich; 0 otherwise. The average partial effects (APE) reported at the bottom of the table are calculated by taking the partial derivative of the probability of a given voting category with respect to the experience-based inflation forecast at each sample observation and then averaging these partial derivatives across the whole sample. Column (i) and (iii) report the results assuming that the thresholds depend on a) whether the member is a board member or regional president, and b) whether the meeting occurs after Nov. 1993 and the interaction of a) and b). Column (ii) and (iv) report the results assuming that the thresholds depends, in addition, on age, gender, party of president at appointment indicator, and same party as current president indicator. In parentheses we report the standard error based on two-way clustering by both member and meeting.

	Ordered Probit		Ordered Probit "de-chaired"	
	(i)	(ii)	(iii)	(iv)
Experienced-Based Forecast	137.1 (41.1)	137.7 (42.3)	67.9 (27.8)	69.3 (27.3)
Wallich Dummy	1.32 (0.36)	1.28 (0.36)	1.07 (0.17)	1.07 (0.18)
Meeting FE Thresholds	Yes Role $\times I_{>93}$	Yes All	No Role $\times I_{>93}$	No All
Observations	6707	6707	6707	6707
Pseudo R^2	39.0%	38.2%	9.8%	10.1%
APE of Experienced-Based Forecast:				
Dovish Dissent	-4.8	-4.9	-3.5	-3.6
Consent	-2.8	-2.8	-1.8	-1.7
Hawkish Dissent	7.6	7.6	5.3	5.4
APE of Wallich Dummy:				
Dovish Dissent	-0.047	-0.045	-0.055	-0.055
Consent	-0.027	-0.026	-0.028	-0.027
Hawkish Dissent	0.074	0.071	0.083	0.083

Table A.12
 EXPERIENCE-BASED INFLATION FORECASTS AND FOMC MEMBERS' TONE OF SPEECHES:
 EXPERIENCE ACCUMULATION STARTING AT AGE 10

OLS regressions with the *NetIndex* measure of speech hawkishness from equation (15) as the dependent variable. The experience-based inflation forecast for each member at each meeting is calculated as in Table 3. All estimations include the same controls and interactions with recent CPI inflation and unemployment as in Table 3. In addition, we include the controls for education and professional background detailed in the text, except for columns (3) and (6) where we instead employ member fixed effects. In columns (2) and (5), we drop speeches of chairmen. Standard errors, shown in parentheses, are calculated allowing for two-way clustering by FOMC member and year-quarter.

	Net Index excluding (un)empl.			Net Index including (un)empl.		
	(i)	(ii)	(iii)	(iv)	(v)	(vi)
Experience-Based Fcst.	23.85 (10.85)	23.47 (14.24)	30.70 (12.54)	19.96 (9.83)	21.83 (12.73)	31.47 (11.38)
Wallich Dummy	0.09 (0.08)	0.15 (0.09)	- -	0.11 (0.07)	0.13 (0.07)	- -
Member FE	No	No	Yes	No	No	Yes
Year-quarter FE	Yes	Yes	Yes	Yes	Yes	Yes
Chair's speeches dropped	No	Yes	No	No	Yes	No
Industry expr. controls	Yes	Yes	No	Yes	Yes	No
Degree controls	Yes	Yes	No	Yes	Yes	No
Adjusted R^2	4.5%	4.7%	5.7%	3.9%	4.3%	5.1%
Observations	4294	3295	4294	4294	3295	4294

K. Heterogeneity of Experience Effects by Training

In this section, we analyze whether experience effects are muted for FOMC members who have received PhD level training in economics. We let the coefficient that captures the influence of the experience-based forecast (i.e., ϕ in (7); ω in (12); β_1 in (15)) depend on an indicator for having a PhD degree. For all FOMC members but one, this is a PhD in economics. The sole exception is J. Dewey Daane, Federal Reserve Board member from 1963 to 1974, who has a PhD in Public Administration from Harvard. He subsequently worked as statistician, monetary economist, and economic advisor at the Federal Reserve Banks of Richmond and Minneapolis.³⁴ Thus, he also has extensive economics expertise and we therefore include him along with the economics PhDs.

Tables A.13 for expectations, A.14 for voting, and A.15 for speeches show the results. Generally, the point estimates for the interaction of the experience-based forecast with the PhD dummy variable are small in magnitude, mostly less than one fifth of the main effect coefficient. This means that the estimated effect for PhD FOMC members (obtained by adding the experienced-based forecast coefficient with the interaction coefficient) is generally very similar in magnitude as for FOMC members without a PhD. In many cases, the interaction coefficient is not statistically significant and its sign is inconsistent for the different tests (negative, suggesting attenuation of experience effects for expectations and speeches, but positive for voting). The bottom line conclusion therefore is that there is no clear difference between PhDs and non-PhDs in their reliance on inflation experiences in forming their views about inflation and monetary policy.

Table A.13
INFLUENCE OF FOMC MEMBERS' INFLATION EXPERIENCES ON THEIR INFLATION
FORECASTS: INTERACTION WITH PhD DUMMY

	(i)	(ii)	(iii)	(iv)
Exp.-based fcst. - staff fcst.	0.44 (0.11)	0.56 (0.10)	0.79 (0.36)	0.81 (0.40)
(Exp.-based fcst. - staff fcst.) \times PhD	-0.09 (0.05)	-0.18 (0.05)	-0.08 (0.04)	-0.14 (0.04)
Member \times fcst. horizon FE	No	Yes	No	No
Member FE	No	No	No	Yes
Meeting \times fcst. horizon FE	No	No	Yes	Yes
Clustered s.e.	Member and Meeting	Member and Meeting	Member	Member
Observations	383	383	383	383
Adjusted R^2	35.4%	38.9%	78.4%	82.2%

³⁴ see https://www.federalreservehistory.org/people/j_dewey_daane

Table A.14
EXPERIENCE-BASED INFLATION FORECASTS AND FOMC VOTING BEHAVIOR:
INTERACTION WITH PhD DUMMY

	Ordered Probit		Ordered Probit “de-chaired”	
	(i)	(ii)	(iii)	(iv)
Experienced-Based Forecast	207.7 (62.9)	206.5 (66.0)	101.4 (37.2)	101.2 (36.9)
Experienced-Based Forecast \times PhD	29.82 (12.60)	28.64 (12.42)	9.24 (8.19)	8.43 (8.42)
Wallich Dummy	1.26 (0.40)	1.17 (0.41)	0.94 (0.18)	0.94 (0.18)
Meeting FE Thresholds	Yes Role $\times I_{>93}$	Yes All	No Role $\times I_{>93}$	No All
Observations	6707	6707	6707	6707
Pseudo R^2	39.5%	39.7%	10.4%	10.8%

Table A.15
EXPERIENCE-BASED INFLATION FORECASTS AND FOMC MEMBERS’ TONE OF SPEECHES:
INTERACTION WITH PhD DUMMY

	Net Index excluding (un)empl.			Net Index including (un)empl.		
	(i)	(ii)	(iii)	(iv)	(v)	(vi)
Experience-Based Fcst.	31.18 (14.24)	34.77 (18.89)	41.18 (15.70)	28.09 (13.28)	34.21 (18.13)	45.05 (14.16)
Experience-Based Fcst. \times PhD	-4.25 (1.56)	-4.60 (1.72)	-2.65 (2.00)	-4.69 (1.46)	-5.00 (1.57)	-2.55 (2.04)
Wallich Dummy	0.14 (0.09)	0.21 (0.11)		0.16 (0.07)	0.19 (0.08)	
Member FE	No	No	Yes	No	No	Yes
Year-quarter FE	Yes	Yes	Yes	Yes	Yes	Yes
Chair’s speeches dropped	No	Yes	No	No	Yes	No
Industry expr. controls	Yes	Yes	No	Yes	Yes	No
Degree controls	Yes	Yes	No	Yes	Yes	No
Adjusted R^2	4.7%	5.0%	5.7%	4.2%	4.7%	5.1%
Observations	4294	3295	4294	4294	3295	4294