

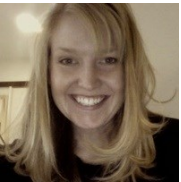
WHO WE ARE



Elizabeth Brannon,
Professor,
Department of
Psychology



Allyson Mackey,
Assistant Professor,
Department of
Psychology



Kathryn Schuler,
Assistant Professor,
Department of
Linguistics



Daniel Swingley,
Professor,
Department of
Psychology



John Trueswell,
Professor,
Department of
Psychology



Deena Weisberg,
Senior Fellow,
Department of
Psychology

Cognitive psychologists specializing in child development at the School of Arts and Sciences at the University of Pennsylvania.



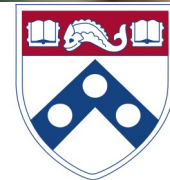
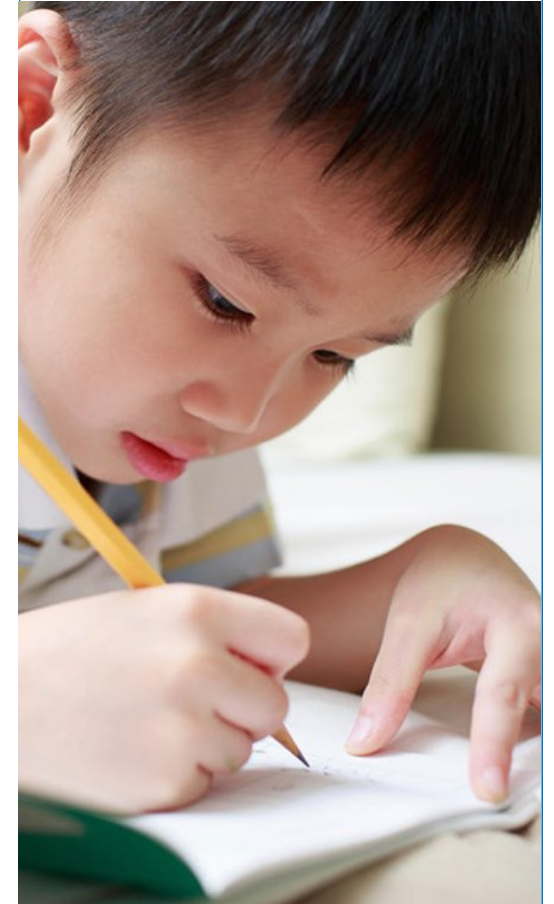
School of Arts & Sciences
University of Pennsylvania
Stephen Levin Building
425 S. University Avenue
Philadelphia, PA 19104

Yvette Almaguer
Participant Outreach Coordinator
E-mail: yalm@sas.upenn.edu
Phone: 215-898-1086



exploring the
growing mind

Penn Child
Development
Labs 
exploring the growing mind





How do Children Learn?

The School of Arts and Sciences at the University of Pennsylvania has faculty specializing in child development who collaborate with investigators across campus and other university scholars. Together their goal is to create cutting edge research projects that will help us understand how children learn. Studies focus on language, number, scientific reasoning and brain plasticity in children.

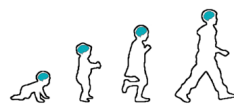
This research would not be possible without parents and partnerships with childcare organizations and schools throughout Philadelphia. With their participation we are able to conduct research that helps us understand barriers to and opportunities for optimal learning experiences for children.

OUR LABS



THE COGNITION AND DEVELOPMENT LAB

studies children's and adult's imaginative and scientific reasoning abilities.



THE CHANGING BRAIN LAB

studies how the brain changes as people grow up and learn new things. We are interested in basic mechanisms of brain plasticity, as well as in developing new strategies to support optimal development and learning.

THE LANGUAGE DEVELOPMENT LANGUAGE PROCESSING LAB

investigates how humans understand, produce, and learn language. Much of our work involves behavioral studies with children and adults, in which we record where someone is looking as they hear or produce speech about their surrounding environment.



THE BRANNON LAB

studies the development of numerical cognition across the lifespan. They conduct behavioral and neuroimaging studies with kids and adults. In this way, they hope to learn how our understanding of number changes throughout development and to discover the biological basis of this understanding



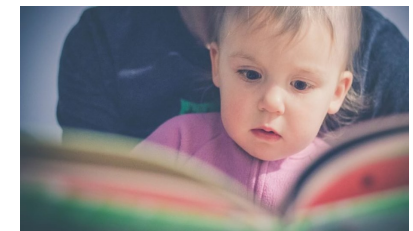
THE INFANT LANGUAGE CENTER

Studies how language develops in infants and toddlers. Our primary goal is to understand how children acquire language.



CHILD LANGUAGE AND LEARNING LAB

studies how children learn languages and other patterns from the world around them



How do babies learn to discriminate sounds in consonant and vowel syllables?