

Alyssa Jennewine

ANTH121

Research Project #1

Kinship inventory of the Jennewine, Boatman, Chase, and Hall/Capps Patrilineal Lineages

Methodology

To construct kinship inventories and charts stemming from myself, ethos, I conducted phone interviews with my mother, father, maternal grandmother, paternal uncle, and paternal great-aunt by partnership. In these interviews, I asked my family to recall by memory the lineage of their families through paternal links. For my mother and father this means the Chase, Hall/Capps, Jennewine, and Boatman sides. My maternal grandmother recalled her family lineage (Hall/Capps) by memory and read me an inventory that my maternal grandfather had compiled of the Chase lineage. My paternal uncle pointed me to an inventory he had made and forwarded me short life histories of Jennewine descendants. My paternal great aunt by partnership, who specializes in genealogy, provided me with an extensive recount of the Boatman line including inventories, trees, and life histories.

Using all the information given to me, I cross referenced the different accounts of the same lineages and referenced an ancestry database (familysearch.org) to fill in missing people in the previously constructed accounts. Because of the unreliable nature and ability for anyone to add to or edit the familysearch database, it was used as a tool rather than a resource. In forming the charts, the lineage based on paternal last name was followed for all four of my grandparents; the Hall/Capp lineage is semi-maternal as there were gaps in information for the Hall side. While only including patrilineages is not wholly inclusive of my family inventory or

genealogy, due to the vast number of descendants in the Chase and Boatman lines, this method best encapsulates my lineage inventory with accuracy and relevancy. In the US, marriage records are often the only form of identification for women before the mid-19th century, so it is often hard to trace maternal lineages through last names.

Inventory

The inventories presented are not meant to serve as a full account of all blood relatives of a common ancestor, but rather an account of who I, and my immediate family, recognize as relatives. The inventories are limited to 11 generations and employ a code of relation which follows: *Fa* = father, *Mo* = mother, *Bro* = brother, *Si* = sister, *Hu* = husband, *Wi* = wife. The format reads: I. Name (date of birth, place of birth - date of death, place of death) *relation to ethos*

Jennewine Patrilineal Inventory: Chart 1 (pg. 8)

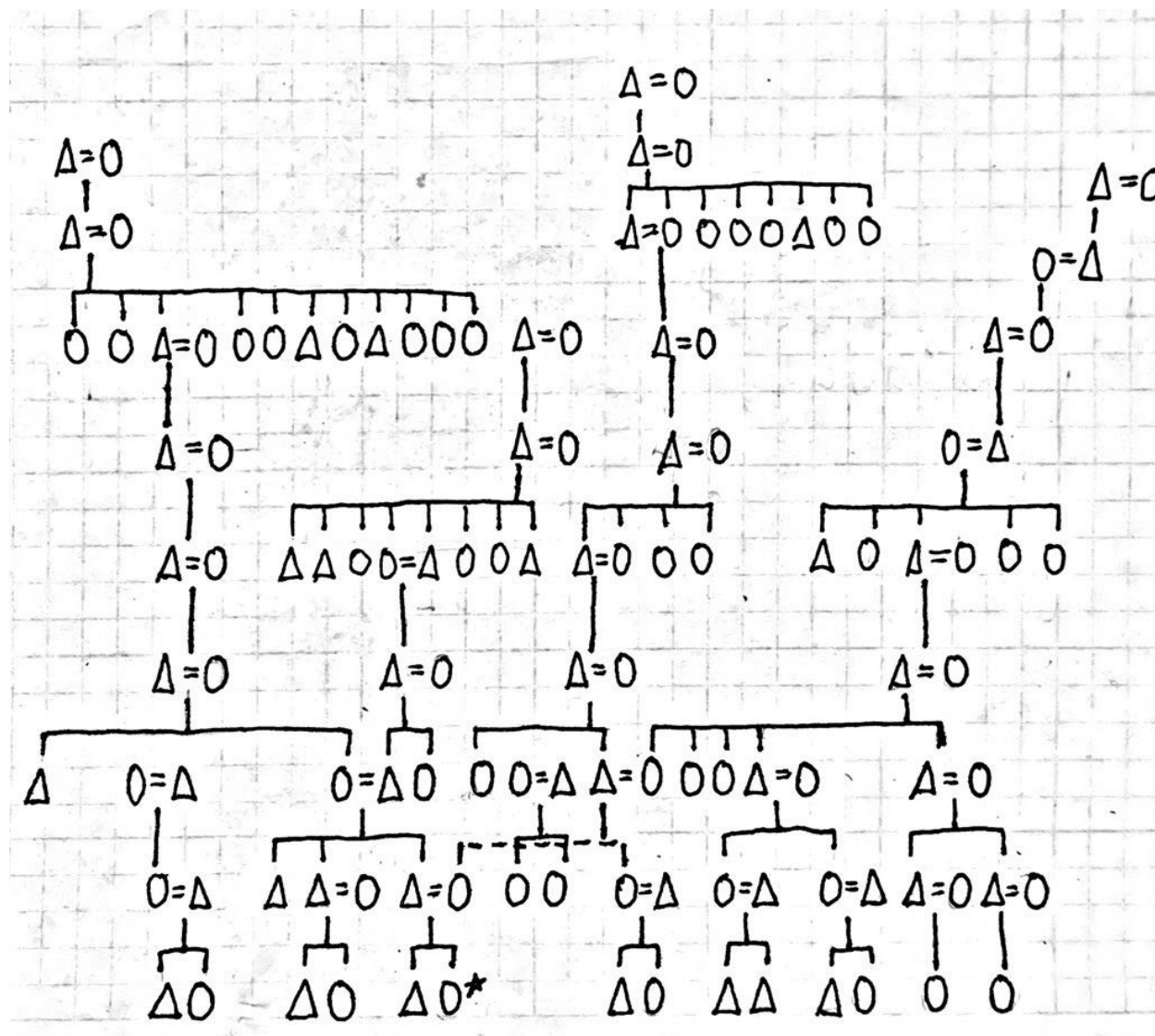
Boatman Patrilineal Inventory: Chart 2 (pg. 9)

Chase Patrilineal Inventory: Chart 3 (pg. 16)

Hall/Capps Patrilineal Inventory: Chart 4 (pg. 20)

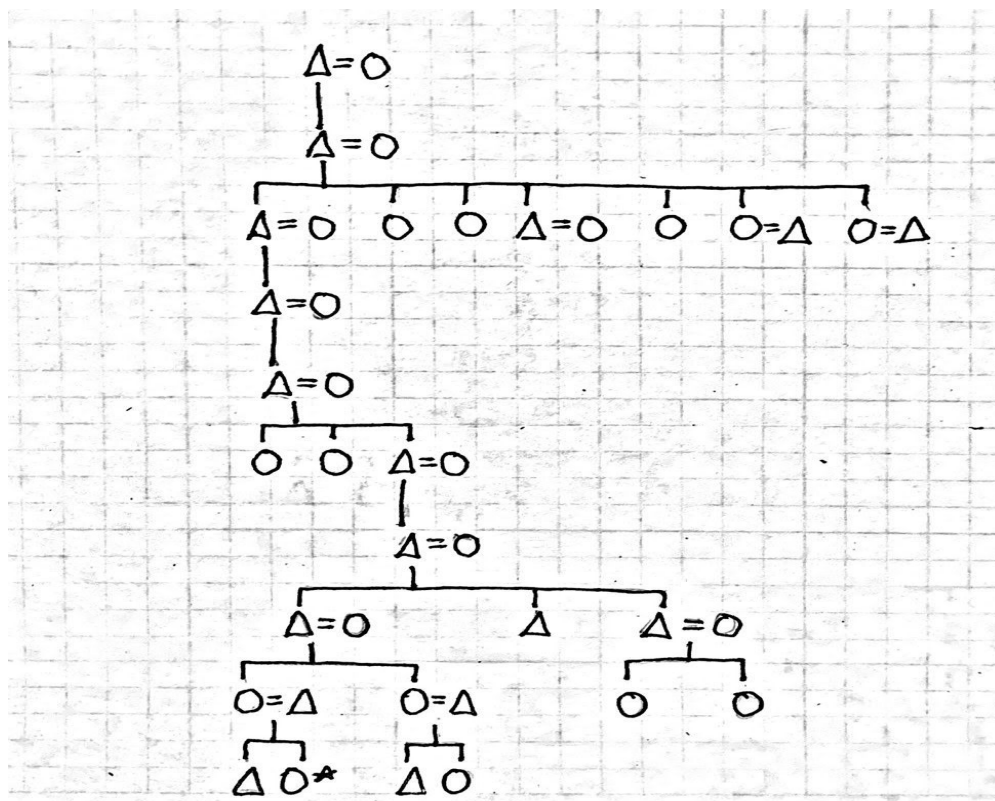
Kinship tree of immediate descendants of the Boatman, Jennewine, Chase, and Hall/Capps patrilineages

This tree tracks only direct lineage through last names and other recognized immediate family

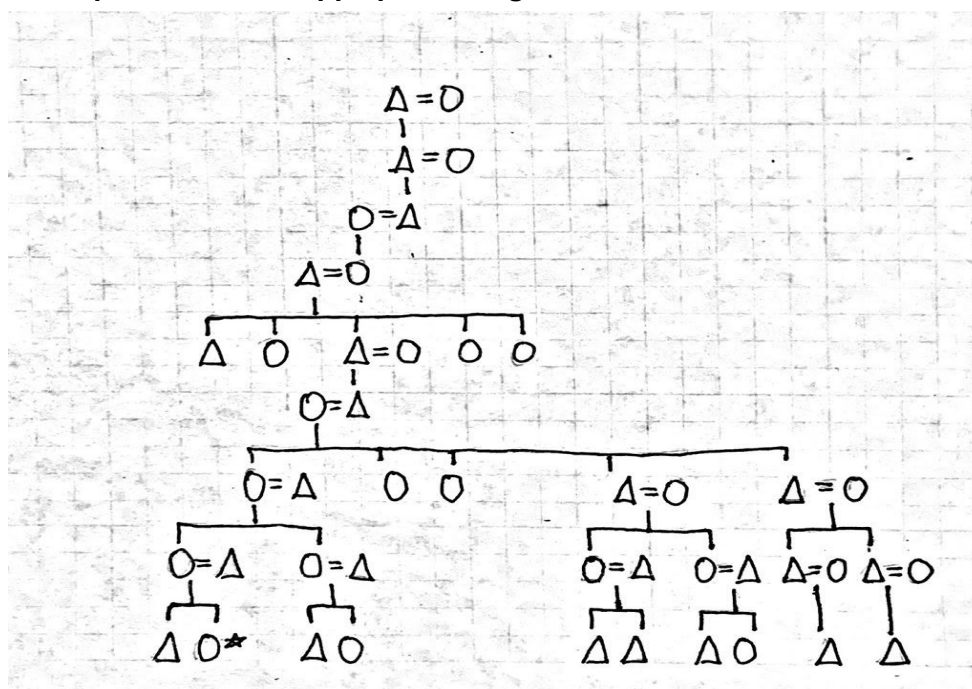


[illegible][illegible]

Kinship tree of Chase patrilineage



Kinship tree of Hall/Capps patrilineage



Analysis

In compiling my family inventories and looking at their histories, I learned of peculiar familiarities in the locality and lifestyles between all four sides of my family. Locality and habits of living were the biggest similarities I found within my family. For nearly seven generations, the Jennewine and Boatman lineages lived in the same area of Pennsylvania yet did not cross paths until the seventh recorded generation. The Chase and Hall/Capps lineages also have extensive histories in the mid and northeast. All lineages tended to stay in the same area in family units for generations, with the exception of moving when marrying someone from another town or area. This tendency to stay in the same area for generations reflects the life histories of individual people along with customs of the particular time. For example, the history of the Boatman side in Jersey Shore, PA is explained by the multi-generational family lumber business-turned-auto shop and gas station through the majority of the 19th century through the mid-20th century. Likewise, the Jennewine family resided in central Pennsylvania for the majority of the 19th and 20th centuries due to common occupations that were accessible throughout generations in the mines and steel manufacturing plants. My paternal great grandfather worked in the Bethlehem Steel plant and my paternal grandfather worked with the technology side of the plant when he entered the workforce. It was economic interest and accessibility that led both the Jennewine and Boatman sides to reside in the same area for over a century and subsequently build a place in history for their contributions to the local economy and continued presence in their towns.

Similarly to the Jennewine and Boatman sides, the Chase lineage contains a rich history with deep connections to a certain area. In this case, that area is Plymouth, Massachusetts and the rich history begins with William Bradford, the second governor of the newly claimed royal colony. After becoming governor of Plymouth, the Bradford name continued in the colony

through the Revolutionary War and recognition of statehood, ultimately transforming into the Chase name and spreading throughout the northeast. Claude Baudiment of the Boatman side shares a history of colonial involvement as he was commissioned by the French to document and follow indigenous trail systems to explore the movement habits of the Native Americans. He traced and identified routes all throughout modern day Pennsylvania and is known for running the entirety of a 100 mile trail in the rain, as told to me by my great-aunt by partnership. Not much is known about the history of the Hall/Capps side besides their continued residency in the midwest until the past three decades. My grandmother informed me that her father died during service in the Vietnam war and his father died during World War II.

Throughout my research, I found the most surprising discovery to be the continued presence in the northeast among all sides of my family. Before this project I had very little knowledge about the life histories of my family other than where they had immigrated to America from and how many generations ago, along with knowledge of notable figures. It was interesting for me to see the deep roots of my family history in a place I now, coincidentally, reside.

The most challenging aspect of accumulating the inventories and charts was the vast number of descendants stemming from large numbers of offspring. The large number of offspring and subsequent adopted last names from women in the bloodline create an immense bank of potential relatives that is nearly impossible to trace on a family database (such as [familysearch.org](https://www.familysearch.org)) with accuracy. Even with the extensive documentation I received from my great-aunt by partnership there are most likely inconsistencies in the information presented due to intermarriages, women adopting different last names, and complex layers of relationships and interconnected lineages.

Chart 1: Jennewine Patrilineal Inventory

1. Johann Jakob (?-?, place of birth, death unknown) *FaFaFaFaFaFa* = Katherine Shuetz (?-?, place of birth, death unknown) *FaFaFaFaFaFaWi*
 - a. Nikolaus Jennewein (1792 Wiebelskirchen, Germany -1880 Monongalia, WV) *FaFaFaFaFaFa* = Katherina Leibenguth (1792 Prussia, Germany -?) *FaFaFaFaFaFaWi*
 - i. Christian Jennewein (1834 Prussia, Germany - 1917 Fayette, PA) *FaFaFaFaFa* = Margaret Jarrett (1844 Monongalia, VA - ?) *FaFaFaFaFaWi*
 1. George B. Jennewine (1865 Pennsylvania - 1937 Washington, PA) *FaFaFaFaBro* = Alice Rodebaugh (1879 Pennsylvania -1960 Westmoreland, PA) *FaFaFaFaBroWi*
 - a. Carl Jennewine (1898 Pennsylvania -1969 Broward, Florida) *FaFaFaFaBroSo*
 - b. Margaret Jennewine (1903 Pennsylvania - ?) *FaFaFaFaBroDa* = Ewing Tanavsky (1900 Pennsylvania - ?) *FaFaFaFaBroDaHu*
 - i. Margaret Tanavsky (1926 Pennsylvania - ?) *FaFaFaFaBroDaDa*
 - c. George Jennewine (1905 - 1910 Washington, PA) *FaFaFaFaBroSo*
 2. Catharine Jennewine (1867 West Virginia - 1871 Monongalia, WV) *FaFaFaFaSi*
 3. Charles Jennewine (1870 Monongalia, WV - 1949 Monongalia, WV) *FaFaFaFa* = Isa L. Dickenson (1876 West Virginia - ?) *FaFaFaMo*
 - a. Herbert C. Jennewine (1907 Fayette, PA - 1958 Allegheny, PA) *FaFaFa* = Jane Williams (1911 Fayette, PA - 1962 Allegheny, PA) *FaFaMo*
 - i. Jane Jennewine (1941 Allegheny, PA - 1971 Allegheny, PA) *FaFaSi*
 - ii. Richard Jennewine (1943 Fayette, PA - Present Naples, FL) *FaFa* = Shirley Jennewine (1945 Jersey Shore, PA - 2010 Naples, FL) *FaMo*
 1. Richard Jennewine (1969 Williamsport, PA - Present Portland, OR) *FaBro*
 2. Jon Jennewine (1971 Littleton, CO - Present Phoenix, AZ) *Fa* = Jane Chase Jennewine (1973 Fremont, CO - Present Phoenix, AZ) *Mo*
 - a. Chase Jennewine (1996 Englewood, CO - Present Phoenix, AZ) *Bro*
 - b. Alyssa Jennewine (1999 Englewood, CO - Present Bethlehem, PA)***
 3. Brandon Jennewine (1973 Littleton, CO - Present Castlerock, CO) *FaBro* = Lee Barnes (1969 Ohio - Present Castlerock, CO) *FaBroWi*
 4. William Jennewine (1872 Monogalia, WV - 1940 Fayette, Pennsylvania)

- FaFaFaFaBro* = Rachel Dickinson (1874 Pennsylvania - ?) *FaFaFaFaBroWi*
5. Caroline Jennewine (1872 Monongalia, WV - 1953 Fayette, PA) *FaFaFaFaSi* = Lorenzo Dow Sisler (1860 Monongalia, WV - 1952 Fayette PA) *FaFaFaFaSiHu*
 - a. Gertrude Sisler (1890 Pennsylvania - 1916 Cuyahoga, OH) *FaFaFaFaSiDa* = Harry C. Hyer (1885 Middlesex, NJ - 1958 New Jersey) *FaFaFaFaSiDaHu*
 - i. Dorothy Hyer (1915 Fayette, PA - 1995 Summit, OH) *FaFaFaFaSiDaDa*
 - b. Herbert Ray Sisler (1892 Middlesex, NJ - 1966 Middlesex, NJ) *FaFaFaFaSiSo*
 - c. Hustead P. Sisler (1894 Westmoreland, PA - 1982 Orange, FL) *FaFaFaFaSiSo* = Jessie D. Conn (1893 West Virginia - 1983 Orange, FL) *FaFaFaFaSiSoWi*
 - i. Helen J. Sisler (1917 - 2012 Pennsylvania) *FaFaFaFaSiSoDa*
 - ii. Warren E. Sisler (1918 Fayette, PA - 1974 Monongalia, WV) *FaFaFaFaSiSoSo* = Dorothy M. Guseman (1919 Fayette, Pa - 2002 Monongalia, WV) *FaFaFaFaSiSoSoWi*
 1. William D. Sisler (1947 Fayette, PA - 1968 Vietnam) *FaFaFaFaSiSoSoSo*
 2. Brenda L. Sisler (1948 Fayette, PA - 1966 Monongalia, WV) *FaFaFaFaSiSoSoDa*
 - d. Beulah Sisler (1896 Westmoreland, PA - 1990 Juniata, PA) *FaFaFaFaSiDa* = Donald R. Laing (1898 Pennsylvania - 1974) *FaFaFaFaSiDaHu*
 - i. Kathleen A. Laing (1922-1955) *FaFaFaFaSiDaDa*
 - ii. Janet M. Laing (1925-1964) *FaFaFaFaSiDaDa*
 - iii. Donald R. Laing (1931-2009) *FaFaFaFaSiDaSo*
 - e. Viola M. Sisler (1900 Westmoreland, PA - 1989) *FaFaFaFaSiDa* = Hugh B. Humbert (1897 Fayette, PA - 1981) *FaFaFaFaSiDaHu*
 - i. Harold P. Humbert (1923-2013) *FaFaFaFaSiDaSo*
 - f. Nellie M. Sisler (1902-1923) *FaFaFaFaSiDa*
 - g. Lorenzo D. Sisler (1910-1996) *FaFaFaFaSiSo*
6. Annie Jennewine (1875 Monongalia, WV - 1960 Allegheny, PA) *FaFaFaFaSi* = Leonidas V. Sisler (1872 Monongalia, WV - 1961 Allegheny, PA) *FaFaFaFaSiHu*
 - a. Herold B. Sisler *FaFaFaFaSiSo*
 - b. Elmer Sisler *FaFaFaFaSiSo*
7. Frank N. Jennewine (1878 West Virginia - 1922 Allegheny, PA) *FaFaFaFaBro* = Anna Vavra (1899 Hungary - 1976 Westmoreland, PA) *FaFaFaFaBroWi*

Chart 2: Boatman Patrilineal Inventory

1. Estienne Baudiment (1660-1715) *FaMoFaFaFaFaFaFaFaFa* = Magdelaine Bonvin (1665-1691)
FaMoFaFaFaFaFaFaFaMo
a. Jacques Baudiment (1708 Allier, France -1802 Lycoming, PA) *FaMoFaFaFaFaFaFaFaFa*=
Catherine Cornil (1712 France - ?) *FaMoFaFaFaFaFaFaFaWi*
i. Claudius Boatman (1704 Lycoming, PA - 1819 Lycoming, PA) *=FaMoFaFaFaFaFaFaFa*
Esther Callahan (1729 Lycoming, PA - 1810 Lycoming, PA) *FaMoFaFaFaFaFaFaFaWi*
1. Mary Boatman (Deceased) *FaMoFaFaFaFaFaFaSi*
2. Rebecca Boatman (1748 Lycoming, PA) *FaMoFaFaFaFaFaFaSi*
3. Fanny Boatman (1752 Lycoming, PA) *FaMoFaFaFaFaFaFaSi*
4. Jane Boatman (1754 Lycoming, PA) *FaMoFaFaFaFaFaFaSi*
5. James Boatman (1755 Lycoming, PA -1824 Lycoming, PA) *FaMoFaFaFaFaFaFaFa*=
Anna Mills (1755 Lycoming, PA -1832 Lycoming, PA) *FaMoFaFaFaFaFaFaWi*
a. William Boatman (1773 Lycoming, PA -1845 Lycoming, PA)
FaMoFaFaFaFaFa= Nancy Clark (1775 Lycoming, PA -1840 Lycoming,
PA) *FaMoFaFaFaFaFaWi*
i. James Boatman (1810 Lycoming, PA -1888 Lycoming, PA)
FaMoFaFaFaFaFa= Lucetta McCollough (1805 Lycoming, PA -1889
Lycoming, PA) *FaMoFaFaFaFaWi*
1. William Boatman (1850 Lycoming, PA -1922 Lycoming,
PA) *FaBroFaFaFa* = Emma McSpadder (1849 Lycoming,
PA -1916 Lycoming, PA) *FaMoFaFaWi*
a. Harvey Boatman *FaMoFa* (1881 Lycoming, PA
-1965 Lycoming, PA) = Mimi Marshall
(1885-1948) *FaMoFaWi*
i. Patricia Boatman (1931 Lycoming, PA
-2006 Portland, ME) = Don Springer
(1935 Portland, ME -2009 Portland, ME)
1. Donna Springer *FaMoSi*(1962
Portland, ME -Present) = James
Duffield (1960 Lycoming, PA
-Present) *FaMoSiHu*
A. Jeremy Duffield (1981 Jersey
Shore, PA -Present) *FaMoSiSo*
B. Devony Duffield (1983 Jersey
Shore, PA -Present) *FaMoSiDa*
ii. Harvey Boatman (1939 Lycoming, PA
-Present) *FaMoBro*
iii. Shirley Boatman (1941 Jersey Shore,
PA -2012 Naples, FL) *FaMo* = Richard
Jennewine (1945 Millersville, PA
-Present) *FaFa*
1. Richard Jennewine (1969
Williamsport, PA -Present)
FaBro
2. Jon Jennewine (1971 Littleton,
CO - Present) *Fa*= Jane Chase
(1973 Fremont, CO -Present)
Mo

A, Chase Jennewine (1996
Englewood, CO -Present) *Bro*
**B. Alyssa Jennewine (1999
Englewood, CO -Present)****
3. Brandon Jennewine (1973
Littleton, CO -Present) *FaBro*=
Lee Barnes (1969 Ohio
-Present) *FaBroWi*
A. Ryder Jennewine (2009
FaBroWi Castlerock, CO
-Present) *FaBroSo*
B. London Jennewine (2009
Castlerock, CO -Present)
FaBroDa
6. Sarah Boatman (1755 Northumberland, PA -1836 Clinton, PA)
FaMoFaFaFaFaFaFaSi = John Morrison (1770 Bucks, PA - 1836 Clinton, PA)
FaMoFaFaFaFaFaFaSiHu
a. Nancy Morrison (1774 Lycoming, PA - 1842 Bucks, PA)
FaMoFaFaFaFaFaFaSiDa
b. Sarah Morrison (1799 Lycoming, PA - 1873 Lycoming, PA)
FaMoFaFaFaFaFaFaSiDa = William Blackwell (1793 Lycoming, PA - 1870
Lycoming, PA) *FaMoFaFaFaFaFaFaSiDaHu*
i. Mary Blackwell (1815 Lycoming, PA - 1895 Lycoming, PA)
FaMoFaFaFaFaFaFaSiDaDa = Robert Steele (1810 Tioga, PA -
1884 Lycoming, PA) *FaMoFaFaFaFaFaFaSiDaDaHu*
1. 10 children, 24 grandchildren, 36 great-grandchildren
ii. George Blackwell (1821 Tioga, PA - 1895 Tioga, PA)
FaMoFaFaFaFaFaFaSo = Mary Campbell (1832 Lycoming, PA -
1897 Tioga) *FaMoFaFaFaFaFaFaSoWi*
1. 5 children, 12 grandchildren, 18 great-grandchildren
iii. Enoch Blackwell (1824 Lycoming, PA - 1904 Tioga, PA)
FaMoFaFaFaFaFaFaSo = Matilda Landis (1835 Tioga, PA - 1904
Tioga, PA) *FaMoFaFaFaFaFaFaSoWi*
1. 4 children, 13 grandchildren, 22 great-grandchildren
iv. John Blackwell (1828 Lycoming, PA - 1886 Lycoming, PA)
FaMoFaFaFaFaFaFaSo = Martha Walters (1932 Tioga, PA - 1924
Lycoming, PA) *FaMoFaFaFaFaFaFaSoWi*
1. 11 children, 9 grandchildren, 5 great-grandchildren
v. James Blackwell (1828 Lycoming, PA - 1917 Lycoming, PA)
FaMoFaFaFaFaFaFaSo = Maria Compton (1843 Bucks, PA - 1925
Lycoming, PA) *FaMoFaFaFaFaFaFaSoWi*
1. 9 children, 5 grandchildren, 13 great-grandchildren
vi. Sarah Blackwell (1830 Lycoming, PA - 1864 Lycoming, PA)
FaMoFaFaFaFaFaFaDa= Gordon Steele (1825 Bucks, PA - 1881
Lycoming, PA) *FaMoFaFaFaFaFaFaDaHu*
1. 5 children, 3 grandchildren, 7 great-grandchildren
vii. William Blackwell (1833 Lycoming, PA - 1899 Lycoming, PA)
FaMoFaFaFaFaFaFaSo

- c. Margaret Morrison (1799 Lycoming, PA - 1889 Lycoming, PA)
FaMoFaFaFaFaFaSi = William English (1793 Lycoming, PA - 1879 Lycoming, PA) *FaMoFaFaFaFaFaSiHu*
- i. Elizabeth English (1817 Lycoming, PA -1909 Lycoming, PA)
FaMoFaFaFaFaFaSiDa = Jeremiah English (1812 Lycoming, PA - 1876 Lycoming, PA) *FaMoFaFaFaFaFaSiDaHu*
 - 1. 6 children, 3 grandchildren, 8 great-grandchildren
 - ii. Frances English (1816 Lycoming, PA -1874 Tioga, PA)
FaMoFaFaFaFaFaSiDa = Harmon Miller (1808 Tioga, PA -1889 Tioga, PA) *FaMoFaFaFaFaFaSiDaHu*
 - 1. 3 children, 1 grandchild
 - iii. Elizabeth English (1817 Lycoming, PA -1909 Lycoming, PA)
FaMoFaFaFaFaFaSiDa = Michael Miller (1813 Lycoming, PA -1843 Lycoming, PA) *FaMoFaFaFaFaFaSiDaHu*
 - 1. 4 children, 2 grandchildren, 5 great-grandchildren
 - iv. Margaret English (1819 Lycoming, PA -1882 Lycoming, PA)
FaMoFaFaFaFaFaSiDa = James Cline (1810 Lycoming, PA -1881 Lycoming, PA) *FaMoFaFaFaFaFaSiDaHu*
 - 1. 8 children, 12 grandchildren, 16 great-grandchildren
 - v. John English (1823 Lycoming, PA - 1896 Lycoming, PA)
FaMoFaFaFaFaFaSiSo = Joanna Ayers (1832 - 1872) *FaMoFaFaFaFaFaSiSoWi*
 - 1. 5 children, 8 grandchildren, 12 great-grandchildren
 - vi. George English (1826 Lycoming, PA - 1888 Delaware, US)
FaMoFaFaFaFaFaSiSo = Johanna Callahan (1824 Delaware, US - ?) *FaMoFaFaFaFaFaSiSoWi*
 - 1. 3 children, 8 grandchildren, 13 great-grandchildren
 - vii. Rachel English (1829 Lycoming, PA -1900 Lycoming, PA)
FaMoFaFaFaFaFaSiDa = George Carson (1813 Tioga, PA -1897 Lycoming, PA) *FaMoFaFaFaFaFaSiDaHu*
 - 1. 4 children, 5 grandchildren, 10 great-grandchildren
 - viii. Sarah English (1830 Lycoming, PA -1902 Lycoming, PA)
FaMoFaFaFaFaFaSiDa = Jonathan English (1819 Lycoming, PA - 1904 Lycoming, PA) *FaMoFaFaFaFaFaSiDaHu*
 - 1. 3 children, 8 grandchildren, 9 great-grandchildren
 - ix. James English (1831 Lycoming, PA- 1905 Lycoming, PA)
FaMoFaFaFaFaFaSiSo = Elizabeth Black (1840 Lycoming, PA - ?) *FaMoFaFaFaFaFaSiSoWi*
 - 1. 8 children, 5 grandchildren, 9 great-grandchildren
 - x. Claudius English (1832 Lycoming, PA- ?)
FaMoFaFaFaFaFaSiSo = Lusetta Hitchinson (1832 Lycoming, PA - 1917 Lycoming, PA) *FaMoFaFaFaFaFaSiSoWi*
 - 1. 7 children, 4 grandchildren, 2 great-grandchildren
 - xi. Eli English (1833 Lycoming, PA -1913 Lycoming, PA)
FaMoFaFaFaFaFaSiSo = Lucinda Antes (1837 Lycoming, PA-?) *FaMoFaFaFaFaFaSiSoWi*
 - 1. 2 children
- xii. Anna English (1836 Lycoming, PA -1900 Lycoming, PA) *FaMoFaFaFaFaFaSiDa* = Hiram Barber (1824 Lycoming, PA -1898 Lycoming, PA) *FaMoFaFaFaFaFaSiDaHu*
 - 1. 5 children, 9 grandchildren, 13 great-grandchildren
- xiii. Samuel English (1839 Lycoming, PA-1863 Lycoming, PA)
FaMoFaFaFaFaFaSiSo
- xiv. Caroline English (1841 Lycoming, PA-1917 Lycoming, PA)
FaMoFaFaFaFaFaSiDa = Miller Day (1836 Warren, PA - ?) *FaMoFaFaFaFaFaSiDaHu*
 - 1. 9 children, 21 grandchildren, 12 great-grandchildren
- d. Mercy Morrison (1799 Lycoming, PA - 1889 Lycoming, PA)
FaMoFaFaFaFaFaSi = John Lundy (1779 Lycoming, PA- 1858 Lycoming, PA) *FaMoFaFaFaFaFaSiHu*
- i. John Lundy (1823 Lycoming, PA - 1892 Northumberland, PA)
FaMoFaFaFaFaFaSiSo = Anna Pierson (1828 Northumberland, PA - 1857 Northumberland, PA) *FaMoFaFaFaFaFaSiSoWi*
 - 1. 4 children, 8 grandchildren, 7 great-grandchildren
 - ii. Sarah Lundy (1826 Lycoming, PA -1903 Lycoming, PA)
FaMoFaFaFaFaFaSiDa = John McHenry (1823 Warren, PA -1898 Lycoming, PA) *FaMoFaFaFaFaFaSiDaHu*
 - 1. 6 children, 14 grandchildren, 17 great-grandchildren
 - iii. William Lundy (1827 Lycoming, PA-1865 Lycoming, PA)
FaMoFaFaFaFaFaSiSo
 - iv. Anna Lundy (1829 Lycoming, PA-?) *FaMoFaFaFaFaFaSiDa* = Peter Adams (1825- Northumberland, PA - 1881 Lycoming, PA) *FaMoFaFaFaFaFaSiDaHu*
 - 1. 8 children, 12 grandchildren, 9 great-grandchildren
 - v. Harriet Lundy (1831 Lycoming, PA -1909 Lycoming, PA)
FaMoFaFaFaFaFaSiDa = Andrew Ressel (1822 Lycoming, PA -1891 Lycoming, PA) *FaMoFaFaFaFaFaSiDaHu*
 - vi. Charles Lundy (1834 Lycoming, PA-1857 Lycoming, PA)
FaMoFaFaFaFaFaSiSo
 - vii. Albert Lundy (1836 Lycoming, PA - 1915 Lycoming, PA)
FaMoFaFaFaFaFaSiSo = Susan Ayres (1840-1907) *FaMoFaFaFaFaFaSiSoWi*
 - 1. 3 children, 4 grandchildren
- e. George Morrison (1800 Lycoming, PA - 1886 Shuykill, PA)
FaMoFaFaFaFaFaBro = Hannah Emich (1798 Schuykill, PA - 1892 Shuykill, PA) *FaMoFaFaFaFaFaBroWi*
- i. Amanda Morrison (1825 Shuykill, PA -1912 Shuykill, PA)
FaMoFaFaFaFaFaBroDa
 - ii. Ann Morrison (1827 Shuykill, PA -1843 Shuykill, PA)
FaMoFaFaFaFaFaBroDa
 - iii. James Morrison (1831 Shuykill, PA -1904 Philadelphia, PA)
FaMoFaFaFaFaFaBroSo = Mary Harrison (1843 Philadelphia, PA -1924 Philadelphia, PA) *FaMoFaFaFaFaFaBroSoWi*
 - 1. 9 children, 14 grandchildren, 21 great-grandchildren

- iv. William Morrison (1832 Shuykill, PA -1904 Northumberland, PA)
FaMoFaFaFaFaFaBroSo = Elizabeth Clark (1846 Shuykill, PA -1921 Shuykill, PA) *FaMoFaFaFaFaFaBroSoWi*
 - 1. 3 children, 9 grandchildren, 13 great-grandchildren
- v. Sarah Morrison (1836 Shuykill, PA - 1913 Lycoming, PA)
FaMoFaFaFaFaFaBroDa = John Pond (1837 Lycoming, PA -?)
FaMoFaFaFaFaFaBroDaHu
 - 1. 2 children
- f. Elizabeth Morrison (1801 Lycoming, PA - 1837 Lycoming, PA)
FaMoFaFaFaFaFaSi = John Henderson (1800 Lycoming, PA - ?)
FaMoFaFaFaFaFaSiWi
 - i. Thomas Henderson (1836 Lycoming, PA -1897 Northumberland, PA) *FaMoFaFaFaFaFaSiSo*
- g. Rachel Morrison (1801 Lycoming, PA - 1889 Lycoming, PA)
FaMoFaFaFaFaFaSi = James Rowland (1800 Lycoming, PA - 1852 Lycoming, PA) *FaMoFaFaFaFaFaSiHu*
 - i. Henry Roland (1843 Lycoming, PA -1892 Morris, PA)
FaMoFaFaFaFaFaSiSo = Sarah Francis (1848 Morris, PA -1922 Morris, PA) *FaMoFaFaFaFaFaSiSoWi*
 - 1. 10 children, 27 grandchildren...
- h. Zalaen Morrison (1806 Lycoming, PA - 1817 Lycoming, PA)
FaMoFaFaFaFaFaBro
- i. Margaret Morrison (1810 Lycoming, PA - 1828 Lycoming, PA)
FaMoFaFaFaFaFaSi = Joshua Blackwell (1810 Lycoming, PA - ?)
FaMoFaFaFaFaFaSiHu
- j. Anna Morrison (1812 Lycoming, PA - 1871 Lycoming, PA)
FaMoFaFaFaFaFaSi = Alexander Hamilton (1792 Northumberland, PA - 1851 Lycoming, PA) *FaMoFaFaFaFaFaSiHu*
 - i. Alexander Hamilton (1835 Lycoming, PA -1901 Lycoming, PA)
FaMoFaFaFaFaFaSiSo
 - ii. Robert Hamilton (1839 Lycoming, PA -1851 Lycoming, PA)
FaMoFaFaFaFaFaSiDa
 - iii. William Harrison (1839 Lycoming, PA -1917 Lycoming, PA)
FaMoFaFaFaFaFaSiSo
- k. Jane Morrison (1815 Lycoming, PA -1880 Lycoming, PA)
FaMoFaFaFaFaFaSi = Henry Walters (1804 Lycoming, PA - 1881 Lycoming, PA) *FaMoFaFaFaFaFaSiHu*
 - i. Martha Walters (1832 Lycoming, PA -1924 Lycoming, PA)
FaMoFaFaFaFaFaSiDa = John Blackwell (1828 Lycoming, PA -1866 Lycoming, PA) *FaMoFaFaFaFaFaSiDaHu*
 - 1. 5 children, 8 grandchildren, 15 great-grandchildren
 - ii. William Walters (1840 Lycoming, PA -1928 Lycoming, PA)
FaMoFaFaFaFaFaSiSo = Clara Blackwell (1850 Lycoming, PA -1898 Lycoming, PA) *FaMoFaFaFaFaFaSiSoHu*
 - 1. 8 children, 12 grandchildren, 9 great-grandchildren
 - iii. Mary Walters (1842 Lycoming, PA -1906 Lycoming, PA)
FaMoFaFaFaFaFaSiDa

- iv. Elizabeth Walters (1851 Lycoming, PA -1938 Lycoming, PA)
FaMoFaFaFaFaFaSiDa = William Love (1851 West Virginia, -1921 Lycoming, PA) *FaMoFaFaFaFaFaSiDaHu*
 - 1. 3 children
- 7. Francoise Boatman (1755 Lycoming, PA -1848 Lycoming, PA)
FaMoFaFaFaFaFaSi = John English (1751 Lycoming, PA -1844 Lycoming, PA)
FaMoFaFaFaFaFaSiHu
 - a. Sarah English (1770 Lycoming, PA -1812 Lycoming, PA)
FaMoFaFaFaFaFaSiDa = Thomas Jacobs (1765 Lycoming, PA -1820 Lycoming, PA) *FaMoFaFaFaFaFaSiDaHu*
 - b. James English (1782 Lycoming, PA -1851 Lycoming, PA)
FaMoFaFaFaFaFaSiSo = Annie Young (1788 Lycoming, PA -1874 Lycoming, PA) *FaMoFaFaFaFaFaSiSoWi*
 - c. Margaret English (1783 Lycoming, PA -1877 Lycoming, PA) *FaMoFaFaFaFaFaSiDa* = Abraham Harris (1775 Lycoming, PA -1863 Lycoming, PA) *FaMoFaFaFaFaFaSiDaHu*
 - d. Mary English (1784 Lycoming, PA -1845 Lycoming, PA)
FaMoFaFaFaFaFaSiDa = George Bonnell (1777 Lycoming, PA -1870 Lycoming, PA) *FaMoFaFaFaFaFaSiDaHu*
 - e. Claudius English (1788 Lycoming, PA -1864 Lycoming, PA) *FaMoFaFaFaFaFaSiSo* = Elizabeth Morrison (1792 Lycoming, PA -1882 Lycoming, PA) *FaMoFaFaFaFaFaSiSoWi*
 - f. John English (1789 Lycoming, PA -1868 Lycoming, PA)
FaMoFaFaFaFaFaSiSo = Mary Hamlin (1793 Lycoming, PA -1868 Lycoming, PA) *FaMoFaFaFaFaFaSiSoWi*
 - g. Thomas English (1793 Lycoming, PA - 1845 Lycoming, PA)
FaMoFaFaFaFaFaSiSo = Jane Wilson (1799 Lycoming, PA -1869 Lycoming, PA) *FaMoFaFaFaFaFaSiSoWi*
 - h. William English (1793 Lycoming, PA - 1870 Lycoming, PA)
FaMoFaFaFaFaFaSiSo = Margaret Morrison (1799 Lycoming, PA -1873 Lycoming, PA) *FaMoFaFaFaFaFaSiSoWi*
 - i. Sarah English (1797 Lycoming, PA -1875 Lycoming, PA)
FaMoFaFaFaFaFaSiDa = Thomas Ramsey (1722 Lycoming, PA -1847 Lycoming, PA) *FaMoFaFaFaFaFaSiDaWi*
 - j. Lizzie English (1802 Lycoming, PA -?)
- 8. Cornelius Boatman (1756 Lycoming, PA - ?) *FaMoFaFaFaFaFaBro*
- 9. Mary Boatman (1757 Lycoming, PA - 1846 Lycoming, PA) *FaMoFaFaFaFaFaSi* = Comfort Wanzer (1753 Orange, NY - 1802 Lycoming, PA)
FaMoFaFaFaFaFaSiHu
 - a. Elizabeth Wanzer (1776 Lycoming, PA -1853 Lycoming, PA)
FaMoFaFaFaFaFaSiDa = Rice Hamlin (1755 Lycoming, PA -1815 Lycoming, PA) *FaMoFaFaFaFaFaSiDaHu*
 - i. Mary Hamlin (1793 Lycoming, PA -1868 Warren, PA)
FaMoFaFaFaFaFaSiDaDa = John English (1789 Warren, PA -1868 Warren, PA) *FaMoFaFaFaFaFaSiDaDaHu*
 - 1. 6 children, 9 grandchildren, 16 great-grandchildren

- ii. John Hamlin (1794 Lycoming, PA -1875 Lycoming, PA)
FaMoFaFaFaFaSiDaSo = Rachel Baird (1801 Warren, PA -1871 Lycoming, PA) *FaMoFaFaFaFaSiDaSoHu*
1. 3 children, 7 grandchildren, 5 great-grandchildren
- iii. Jacob Hamlin (1796 Lycoming, PA -1854 Branch, MI)
FaMoFaFaFaFaSiDaSo = Rachel Stebbins (1807 New York, NY -1870 Branch, MI) *FaMoFaFaFaFaSiDaSoWi*
1. 6 children, 8 grandchildren, 5 great-grandchildren
- iv. Elizabeth Hamlin (1797 Lycoming, PA -1889 Lycoming, PA)
FaMoFaFaFaFaSiDaDa = Henry Webb (1793 Lycoming, PA -1856 Lycoming, PA) *FaMoFaFaFaFaSiDaDaHu*
1. 4 children, 3 grandchildren, 2 great-grandchildren
- v. Comfort Hamlin (1800 Lycoming, PA -1890 Lycoming, PA) *FaMoFaFaFaFaSiDaSo* = Eunice Stabins (1805 Lycoming, PA -1888 Lycoming, PA) *FaMoFaFaFaFaSiDaSoWi*
1. 5 children, 3 grandchildren, 7 great-grandchildren
- vi. Joanna Hamlin (1803 Lycoming, PA -1888 Warren, PA)
FaMoFaFaFaFaSiDaDa = Matthew Morrison (1802 Warren, PA -1888 Warren, PA) *FaMoFaFaFaFaSiDaDaHu*
1. 8 children, 12 grandchildren, 8 great-grandchildren
- vii. Susanna Hamlin (1805 Lycoming, PA -1867 McKean, PA)
FaMoFaFaFaFaSiDaDa = Arnett Labree (1797 McKean, PA -1860 McKean, PA) *FaMoFaFaFaFaSiDaDaHu*
1. 4 children, 9 grandchildren, 11 great-grandchildren
- viii. James Hamlin (1809 Lycoming, PA -1909 Lycoming, PA)
FaMoFaFaFaFaSiDaSo = Elizabeth Campbell (1812 Lycoming, PA -1897 Lycoming, PA)
FaMoFaFaFaFaSiDaSoWi
1. 11 children, 23 grandchildren, 19 great-grandchildren
- ix. Rice Hamlin (1811 Lycoming, PA -1887 Lycoming, PA)
FaMoFaFaFaFaSiDaSo = Elizabeth Tome (1815 Lycoming, PA -1883 Lycoming, PA) *FaMoFaFaFaFaSiDaSoWi*
1. 8 children, 11 grandchildren, 8 great-grandchildren
- x. Sarah Hamlin (1813 Lycoming, PA -1892 Lycoming, PA)
FaMoFaFaFaFaSiDaDa = Robert Campbell (1809 Lycoming, PA -1879 Lycoming, PA) *FaMoFaFaFaFaSiDaDaHu*
1. 7 children, 9 grandchildren, 8 great-grandchildren
- 10. Claudius Boatman (1759 Lycoming, PA - 1787 Lycoming, PA)
FaMoFaFaFaFaBro = Marie Reed (1759 Lycoming, PA - 1825 Lycoming, PA)
FaMoFaFaFaFaBroWi
 - a. Robert Boatman (1781 Lycoming, PA -1782 Lycoming, PA)
FaMoFaFaFaFaBroSo
 - b. James Boatman (1783 Jersey Shore, PA- 1853 Lycoming, PA)
FaMoFaFaFaFaBroSo = Anna Mills (1782 Lycoming, PA -1863 Lycoming, PA) *FaMoFaFaFaFaBroSoWi*
 - i. William Boatman (1802 Lycoming, PA-1876 Johnson, IN)
FaMoFaFaFaFaBroSoSo = Nancy Clark (1805 Johnson, IN -1865 Johnson, IN) *FaMoFaFaFaFaBroSoSoWi*

- 1. 5 children, 8 grandchildren, 11 great-grandchildren
- ii. James Boatman (1803 Lycoming, PA -1872 Lycoming, PA)
FaMoFaFaFaFaBroSoSo = Elizabeth Cohee (1809 Northumberland, PA -1887 Lycoming, PA)
FaMoFaFaFaFaBroSoSoWi
1. 8 children, 5 grandchildren, 7 great-grandchildren
- iii. Mark Boatman (1804 Lycoming, PA -1869 Lycoming, PA)
FaMoFaFaFaFaBroSoSo = Cynthia Warwich (1808 Harrisburg, PA -1874 Lycoming, PA)
FaMoFaFaFaFaBroSoSoWi
1. 7 children, 11 grandchildren, 17 great-grandchildren
- iv. Sarah Boatman (1806 Lycoming, PA -1891 Lycoming, PA)
FaMoFaFaFaFaBroSoDa = Isaac Kimble (1800 New York, NY -1859 Lycoming, PA) *FaMoFaFaFaFaBroSoDaHu*
1. 6 children, 18 grandchildren, 11 great-grandchildren
- v. Mary Boatman (1807 Lycoming, PA -1864 Lycoming, PA)
FaMoFaFaFaFaBroSoDa = Joseph Kimble (1805 New York, NY -1874 Lycoming, PA) *FaMoFaFaFaFaBroSoDaHu*
1. 9 children, 13 grandchildren, 7 great-grandchildren
- vi. Ann Boatman (1811 Lycoming, PA -1901 Lycoming, PA)
FaMoFaFaFaFaBroSoDa = Richard Cornell (1809 Lycoming, PA-?) *FaMoFaFaFaFaBroSoDaHu*
1. 3 children
- vii. Jane Boatman (1812 Lycoming, PA -1840 Lycoming, PA)
FaMoFaFaFaFaBroSoDa = Thomas Walton (1815 Morris, PA -1868 Lycoming, PA) *FaMoFaFaFaFaBroSoDaHu*
1. 4 children, 2 grandchildren
- viii. Reed Boatman (1814 Lycoming, PA -1892 Lycoming, PA)
FaMoFaFaFaFaBroSoSo = Harriet Hinkle (1821 Lycoming, PA -1885 Lycoming, PA) *FaMoFaFaFaFaBroSoSoWi*
1. 8 children, 14 grandchildren, 11 great-grandchildren
- ix. William Boatman (1817 Lycoming, PA -1849 Lycoming, PA)
FaMoFaFaFaFaBroSoSo = Eliza Lion
- x. John Boatman (1819 Lycoming, PA -1872 Lycoming, PA)
FaMoFaFaFaFaBroSoSo = Rebecca Lion (1824 Indiana -?)
FaMoFaFaFaFaBroSoSoWi
1. 4 children, 8 grandchildren, 11 great-grandchildren
- xi. Nathan Boatman (1823 Lycoming, PA -1895 Lycoming, PA)
FaMoFaFaFaFaBroSoSo
- xii. Jeremiah Boatman (1827 Lycoming, PA -1906 Northumberland, PA) *FaMoFaFaFaFaBroSoSo* = Harriet Marson (1831 Northumberland, PA -1914 Northumberland, PA)
FaMoFaFaFaFaBroSoSoWi
1. 5 children, 8 grandchildren, 3 great-grandchildren
- c. Nancy Boatman (1788 Lycoming, PA -1868 Lycoming, PA)
FaMoFaFaFaFaBroDa

11. Jane Boatman (1760 Lycoming, PA -1858 Lycoming, PA) *FaMoFaFaFaFaFaSi*
= James English (1744 Lycoming, PA -1835 Lycoming, PA)
FaMoFaFaFaFaFaSiHu
 - a. John English (1786 Lycoming, PA -1869 Lycoming, PA)
FaMoFaFaFaFaFaSiSo = Elizabeth Miller (1788 Lycoming, PA -1872 Lycoming, PA) *FaMoFaFaFaFaFaSiSoWi*
 - i. Mary English (1807 Lycoming, PA -1900 Lycoming, PA)
FaMoFaFaFaFaFaSiSoDa = Daniel Mowry (1802 Lycoming, PA -1859 Lycoming, PA) *FaMoFaFaFaFaFaSiSoDaHu*
 1. 2 children
 - ii. Jacob English (1809 Lycoming, PA -1888 Lycoming, PA)
FaMoFaFaFaFaFaSiSo
 - iii. Jane English (1812- Lycoming, PA 1891 Maryland)
FaMoFaFaFaFaFaSiSoDa = John Bonnell (1805 Butchell, MD -1880 Butchell, MD) *FaMoFaFaFaFaFaSiSoDaHu*
 1. 11 children, 22 grandchildren, 14 great-grandchildren
 - iv. Ellis English (1813 Lycoming, PA -1896 Lycoming, PA)
FaMoFaFaFaFaFaSiSoSo = Elizabeth Deise (1830 Lycoming, PA -1901 Lycoming, PA) *FaMoFaFaFaFaFaSiSoSoWi*
 1. 7 children, 9 grandchildren, 11 great-grandchildren
 - v. George English (1814 Lycoming, PA -1878 Shuykill, PA)
FaMoFaFaFaFaFaSiSoSo = Nancy Hicks (1815 Shuykill, PA -1860 Shuykill, PA) *FaMoFaFaFaFaFaSiSoSoWi*
 1. 5 children, 11 grandchildren, 8 great-grandchildren
 - vi. James English (1815 Lycoming, PA -1885 Lycoming, PA)
FaMoFaFaFaFaFaSiSoSo
 - vii. Elizabeth English (1817-1909) *FaMoFaFaFaFaFaSiSoDa* = Jeremiah English (1812-1876) *FaMoFaFaFaFaFaSiSoDaHu*
 1. 9 children, 12 grandchildren, 11 great-grandchildren
 - viii. Jonathan English (1819 Lycoming, PA -1904 Lycoming, PA)
FaMoFaFaFaFaFaSiSoSo = Sarah English (1830 Lycoming, PA -1902 Lycoming, PA) *FaMoFaFaFaFaFaSiSoSoWi*
 1. 6 children, 9 grandchildren, 13 great-grandchildren
 - ix. Sarah English (1821 Lycoming, PA -1904 Lycoming, PA)
FaMoFaFaFaFaFaSiSoDa = John Ryen (1815 Lycoming, PA -1876 Lycoming, PA) *FaMoFaFaFaFaFaSiSoDaHu*
 1. 8 children, 11 grandchildren, 19 great-grandchildren
 - x. Charles English (1822 Lycoming, PA -1882 Clinton, PA)
FaMoFaFaFaFaFaSiSoSo = Mary Parks (1831 Clinton, PA -1902 Clinton, PA) *FaMoFaFaFaFaFaSiSoSoWi*
 1. 5 children, 21 grandchildren, ??? great-grandchildren
 - xi. Catherine English (1824 Lycoming, PA -1896 Lycoming, PA)
FaMoFaFaFaFaFaSiSoDa = Richard Boswell (1811 Lycoming, PA -1882 Lycoming, PA) *FaMoFaFaFaFaFaSiSoDaHu*
 1. 7 children, 9 grandchildren, 11 great-grandchildren
 - xii. Daniel English (1826 Lycoming, PA -1905 Philadelphia, PA)
FaMoFaFaFaFaFaSiSoSo = Frances Miller (1839 Philadelphia, PA -1894 Philadelphia, PA) *FaMoFaFaFaFaFaSiSoSoWi*

1. 7 children, 11 grandchildren, 17 great-grandchildren
- xiii. Lydia English (1828 Lycoming, PA -1914 Camden, NJ)
FaMoFaFaFaFaFaSiSoDa = Stephen Sarborough (1817 Camden, NJ -1890 Camden, NJ) *FaMoFaFaFaFaFaSiSoDaHu*
 1. 12 children, 23 grandchildren, 34 great-grandchildren
- xiv. William English (1830 Lycoming, PA -1911 Lycoming, PA)
FaMoFaFaFaFaFaSiSoSo = Rebecca Callahan (1832 Lycoming, PA -1907 Lycoming, PA) *FaMoFaFaFaFaFaSiSoSoWi*
 1. 7 children, 11 grandchildren, 22 great-grandchildren
- xv. Delilah English (1832 Lycoming, PA -1903 Lycoming, PA)
FaMoFaFaFaFaFaSiSoDa = Douglas Arrowsmith (1825 Lycoming, PA -1904 Lycoming, PA)
FaMoFaFaFaFaFaSiSoDaHu
 1. 10 children, 15 grandchildren, 9 great-grandchildren
- b. Mary English (1787 Lycoming, PA -1835 Lycoming, PA)
FaMoFaFaFaFaFaSiDa = Daniel Callahan (1793 Lycoming, PA -1871 Lycoming, PA) *FaMoFaFaFaFaFaSiDaHu*
 - i. Margaret Callahan (1830 Lycoming, PA -1929 Lycoming, PA)
FaMoFaFaFaFaFaSiDaDa = Henry Gamble (1827 Lycoming, PA -1915 Lycoming, PA) *FaMoFaFaFaFaFaSiDaDaHu*
 1. 11 children, 17 grandchildren, 19 great-grandchildren
- c. Esther English (1789 Lycoming, PA -1860 Lycoming, PA)
FaMoFaFaFaFaFaSiDa = John Callahan (1796 Lycoming, PA -1896 Lycoming, PA) *FaMoFaFaFaFaFaSiDaHu*
 - i. Emily Vallahan (1823 Lycoming, PA -1853 Lycoming, PA)
FaMoFaFaFaFaFaSiDaDa
 - ii. Perry Callahan (1826 Lycoming, PA -1893 Lycoming, PA)
FaMoFaFaFaFaFaSiDaSo = Matilda Landis (1835 Lycoming, PA -1904 Lycoming, PA) *FaMoFaFaFaFaFaSiDaSoWi*
 - iii. Otis Callahan (1827 Lycoming, PA -1893 Lycoming, PA)
FaMoFaFaFaFaFaSiDaSo
 - iv. Elizabeth Callahan (1828 Lycoming, PA -1920 Lycoming, PA)
FaMoFaFaFaFaFaSiDaDa
 - v. Lucy Callahan (1829 Lycoming, PA-?)
FaMoFaFaFaFaFaSiDaDa
 - vi. Margaret Callahan (1830 Lycoming, PA-1929 Lycoming, PA)
FaMoFaFaFaFaFaSiDaDa = Henry Gamble (1827 Philadelphia, PA -1915 Philadelphia, PA) *FaMoFaFaFaFaFaSiDaDaHu*
 1. 5 children, 3 grandchildren, 1 great-grandchild
 - vii. Mariah Callahan (1833 Lycoming, PA-?)
FaMoFaFaFaFaFaSiDaDa = Henry Pratt (1829 Morris, PA - ?)
FaMoFaFaFaFaFaSiDaDaHu
 1. 3 children
 - viii. Rebecca Callahan (1835 Lycoming, PA-?)
FaMoFaFaFaFaFaSiDaDa = Benjamin Lucas (1842 Lycoming, PA -?) *FaMoFaFaFaFaFaSiDaDaHu*
 1. 4 children, 4 grandchildren, 1 great-grandchild

- ix. Daniel Callahan (1844 Lycoming, PA -1914 Lycoming, PA)
FaMoFaFaFaFaFaSiDaSo = Caroline Tomb (1848 Lycoming, PA -1927 Lycoming, PA) *FaMoFaFaFaFaFaSiDaSoHu*
 - 1. 8 children, 11 grandchildren, 19 great-grandchildren
- d. Elizabeth English (1793 Lycoming, PA -1857 Lycoming, PA)
FaMoFaFaFaFaFaSiDa = William Callahan (1788 Lycoming, PA -1842 Lycoming, PA) *FaMoFaFaFaFaFaSiDaHu*
 - i. Daniel Callahan (1812 Lycoming, PA -1883 Lycoming, PA)
FaMoFaFaFaFaFaSiDaSo = Rebecca Sebring (1814 Lycoming, PA-?) *FaMoFaFaFaFaFaSiDaSoWi*
 - 1. 4 children, 10 grandchildren, 17 great-grandchildren
 - ii. William Callahan (1814 Lycoming, PA -1849 Lycoming, PA)
FaMoFaFaFaFaFaSiDaSo
 - iii. Sarah Callahan (1819 Lycoming, PA -1881 Lycoming, PA)
FaMoFaFaFaFaFaSiDaDa = William Cole (1814 Lycoming, PA -1885 Lycoming, PA) *FaMoFaFaFaFaFaSiDaDaHu*
 - 1. 8 children, 13 grandchildren, 9 great-grandchildren
 - iv. Maria Callahan (1822 Lycoming, PA -1849 Lycoming, PA)
FaMoFaFaFaFaFaSiDaDa
 - v. James Callahan (1825 Lycoming, PA -1840 Lycoming, PA)
FaMoFaFaFaFaFaSiDaSo
 - vi. Hiram Callahan (1827 Lycoming, PA -1903 Carbon, MT)
FaMoFaFaFaFaFaSiDaSo = Rachel Campbell (1831 Lycoming, PA -1903 Carbon, MT) *FaMoFaFaFaFaFaSiDaSoWi*
 - 1. 7 children, 5 grandchildren, 2 great-grandchildren
 - vii. William Callahan (1831 Lycoming, PA -1901 Lycoming, PA)
FaMoFaFaFaFaFaSiDaSo = Catherine Sheffer (1831 Brunswick, SC -1907 Lycoming, PA) *FaMoFaFaFaFaFaSiDaSoWi*
 - 1. 5 children, 8 grandchildren, 18 great-grandchildren
 - viii. Jacob Callahan (1834 Lycoming, PA -1895 Lycoming, PA)
FaMoFaFaFaFaFaSiDaSo
 - ix. Oliver Callahan (1839 Lycoming, PA -1842 Lycoming, PA)
FaMoFaFaFaFaFaSiDaSo
- e. Jane English (1794 Lycoming, PA -1872 Warren, PA)
FaMoFaFaFaFaFaSiDa = Dennis Callahan (1790 Lycoming, PA -1858 Warren, PA) *FaMoFaFaFaFaFaSiDaHu*
 - i. Rebecca Callahan (1811 Warren, PA -1834 Northumberland, PA) *FaMoFaFaFaFaFaSiDaDa* = Samuel Tomb (1806 Northumberland, PA -1888 Northumberland, PA)
FaMoFaFaFaFaFaSiDaDaHu
 - 1. 7 children, 13 grandchildren, 24 great-grandchildren
 - ii. William Callahan (1814 Warren, PA -1879 Warren, PA)
FaMoFaFaFaFaFaSiDaSo = Nancy Nabal (1820 Warren, PA -1895 Warren, PA) *FaMoFaFaFaFaFaSiDaSoWi*
 - 1. 11 children, 22 grandchildren, 18 great-grandchildren
 - iii. Harriet Callahan (1814 Warren, PA -1888 Hamilton, OH)
FaMoFaFaFaFaFaSiDaDa = Benjamin Tomb (1809 Lycoming, PA -1894 Hamilton, OH) *FaMoFaFaFaFaFaSiDaDaHu*

- 1. 9 children, 15 grandchildren, 15 great-grandchildren
- iv. James Callahan (1815 Warren, PA -1840 Warren, PA)
FaMoFaFaFaFaFaSiDaSo
- v. Jane Callahan (1818 Warren, PA -1857 Warren, PA)
FaMoFaFaFaFaFaSiDaDa = John Clark (1817 Warren, PA -1913 Warren, PA) *FaMoFaFaFaFaFaSiDaDaHu*
 - 1. 3 children, 5 grandchildren, 11 great-grandchildren
- vi. Eleanor Callahan (1821 Warren, PA -?)
FaMoFaFaFaFaFaSiDaDa = William Boatman (1818 Lycoming, PA -1906 LaPorte, IN) *FaMoFaFaFaFaFaSiDaDaHu*
 - 1. 7 children, 5 grandchildren, 10 great-grandchildren
- vii. Sarah Callahan (1823 Warren, PA -1908 Lycoming, PA)
FaMoFaFaFaFaFaSiDaDa = Stephen Phillips (1821 Lycoming, PA -1912) Lycoming, PA *FaMoFaFaFaFaFaSiDaDaHu*
 - 1. 8 children, 14 grandchildren, 21 great-grandchildren
- viii. Mary Callahan (1825 Warren, PA -1901 Crawford, PA)
FaMoFaFaFaFaFaSiDaDa = Joel Gorham (1825 Jersey Shore, PA -1863 Crawford, PA) *FaMoFaFaFaFaFaSiDaDaHu*
 - 1. 3 children, 7 grandchildren, 13 great-grandchildren
- ix. Elijah Callahan (1827 Warren, PA - 1908 McKean, PA)
FaMoFaFaFaFaFaSiDaSo = Sussanna Hart (1828 McKean, PA -1859 McKean, PA) *FaMoFaFaFaFaFaSiDaSoWi*
 - 1. 5 children, 2 grandchildren
- x. Caroline Callahan (1830 Warren, PA -1922 Crawford, PA)
FaMoFaFaFaFaFaSiDaDa = Hezekiah Campbell (1826 Warren, PA -1917 Crawford, PA) *FaMoFaFaFaFaFaSiDaDaHu*
 - 1. 8 children, 13 grandchildren, 25 great-grandchildren
- xi. Norris Callahan (1833 Warren, PA - ?)
FaMoFaFaFaFaFaSiDaSo = Emily Campbell (1837 Warren, PA - ?) *FaMoFaFaFaFaFaSiDaSoWi*
 - 1. 4 children, 9 grandchildren, 13 great-grandchildren
- xii. Delilah Callahan (1836 Warren, PA - 1905 Lycoming, PA)
FaMoFaFaFaFaFaSiDaDa = George Kyser (1829 Philadelphia, PA -1906 Philadelphia, PA) *FaMoFaFaFaFaFaSiDaDaHu*
 - 1. 2 children
- f. Sarah English (1800 Lycoming, PA -1864 Lycoming, PA)
FaMoFaFaFaFaFaSiDa
- g. James English (1805 Lycoming, PA -1852 Lycoming, PA)
FaMoFaFaFaFaFaSiSo = Priscilla Campbell (?-?)
FaMoFaFaFaFaFaSiSoWi
 - i. William English (1830 Lycoming, PA -1865 Lycoming, PA)
FaMoFaFaFaFaFaSiSoSo = Pricilla Williammee (1837 Lycoming, PA -1916 Lycoming, PA) *FaMoFaFaFaFaFaSiSoSoWi*
 - 1. 6 children, 14 grandchildren, 26 great-grandchildren
 - ii. Robert English (1832 Lycoming, PA -1912 Lexington, VA)
FaMoFaFaFaFaFaSiSoSo = Rachel Campbell (1824 Warren, PA -1904 Lycoming, PA) *FaMoFaFaFaFaFaSiSoSoWi*
 - 1. 8 children, 5 grandchildren, 2 great-grandchildren

- iii. Margaret English (1824 Lycoming, PA -1888 Lycoming, PA)
FaMoFaFaFaFaFaSiSoDa
- iv. Nathan English (1838 Lycoming, PA -1869 Lycoming, PA)
FaMoFaFaFaFaFaSiSoSo = Sarah Putnam (1837 Lycoming, PA -1911 Lycoming, PA) *FaMoFaFaFaFaFaSiSoSoWi*
 - 1. 10 children, 18 grandchildren, 31 great-grandchildren
- v. Catherine English (1840 Lycoming, PA -1924 Lexington, VA)
FaMoFaFaFaFaFaSiSoDa = Michael Campbell (1835 Warren, PA -1921 Lexington, VA) *FaMoFaFaFaFaFaSiSoDaHu*
 - 1. 8 children, 8 grandchildren, 5 great-grandchildren
- vi. John English (1842 Lycoming, PA -1912 Philadelphia, PA)
FaMoFaFaFaFaFaSiSoSo = Naomi Putman (1841 Charleston, SC -1923 Philadelphia, PA) *FaMoFaFaFaFaFaSiSoSoWi*
 - 1. 7 children, 9 grandchildren, 13 great-grandchildren
- vii. Edward English (1847 Lycoming, PA -1920 Lycoming, PA)
FaMoFaFaFaFaFaSiSo
- 12. Rebecca Boatman (1766 Lycoming, PA -1839 Lycoming, PA)
FaMoFaFaFaFaFaSi = Isaac Smee (1756 Lycoming, PA - 1839 Lycoming, PA)
FaMoFaFaFaFaFaSiHu
 - a. Annatje Smee (1769 Lycoming, PA -?) *FaMoFaFaFaFaFaSiDa* = Joel Hostrander (1768 Lycoming, PA -1850 Lycoming, PA)
FaMoFaFaFaFaFaSiDaHu
 - i. Cornelius Hostrander (1790 Lycoming, PA -1830 Lycoming, PA)
FaMoFaFaFaFaFaSiDaSo
 - ii. Elizabeth Hostrander (1792 Lycoming, PA -1872 Lycoming, PA)
FaMoFaFaFaFaFaSiDaDa = Simon Campbell (1786 Lycoming, PA -1872 Lycoming, PA) *FaMoFaFaFaFaFaSiDaDaHu*
 - 1. 9 children, 7 grandchildren, 6 great-grandchildren
 - iii. Mary Hostrander (1795 Lycoming, PA -1839 Lycoming, PA)
FaMoFaFaFaFaFaSiDaDa = Michael Campbell (1794 Lycoming, PA -1881 Lycoming, PA) *FaMoFaFaFaFaFaSiDaDaHu*
 - 1. 8 children, 5 grandchildren, 3 great-grandchildren
 - iv. James Hostrander (1802 Lycoming, PA -1880 Lycoming, PA)
FaMoFaFaFaFaFaSiDaSo = Jane Gamble (1806 Lycoming, PA -1874 Lycoming, PA) *FaMoFaFaFaFaFaSiDaSoWi*
 - 1. 3 children, 4 grandchildren, 2 great-grandchildren
 - v. Joel Hostrander (1808 Lycoming, PA -1876 Lycoming, PA)
FaMoFaFaFaFaFaSiDaSo = Mary Campbell (1817 Lycoming, PA -1885 Lycoming, PA) *FaMoFaFaFaFaFaSiDaSoWi*
 - 1. 4 children, 1 grandchild
 - vi. Margaret Hostrander (1810 Lycoming, PA -1889 Lycoming, PA)
FaMoFaFaFaFaFaSiDaDa = Philip Cryder (1803 Lycoming, PA -1858 Lycoming, PA) *FaMoFaFaFaFaFaSiDaDaHu*
 - 1. 2 children, 1 grandchildren, 5 great-grandchildren
 - vii. Charity Hostrander (1814 Lycoming, PA -1883 Lycoming, PA)
FaMoFaFaFaFaFaSiDaDa = John Harris (1804 Lycoming, PA -1879 Lycoming, PA) *FaMoFaFaFaFaFaSiDaDaHu*
 - 1. 5 children, 8 grandchildren, 14 great-grandchildren

- viii. Sarah Hostrander (1815 Lycoming, PA -1870 Lycoming, PA)
FaMoFaFaFaFaFaSiDaDa
- b. John Smee (1792 Lycoming, PA -1882 Lycoming, PA)
FaMoFaFaFaFaFaSiSo
- c. Charles Smee (1794 Lycoming, PA -1884 Lycoming, PA)
FaMoFaFaFaFaFaSiSo
- d. Alpheus Smee (1795 Lycoming, PA -1880 Lycoming, PA)
FaMoFaFaFaFaFaSiSo
- e. Elizabeth Smee (1803 Lycoming, PA -1861 Lycoming, PA)
FaMoFaFaFaFaFaSiDa = John Shaner (1808 Lycoming, PA -1890 Lycoming, PA) *FaMoFaFaFaFaFaSiDaHu*
 - i. Russel Shaner (1827 Lycoming, PA -1905 Birmingham, AL)
FaMoFaFaFaFaFaSiDaSo = Catherine Shaner (1829 Lycoming, PA -1905 Birmingham, AL)
FaMoFaFaFaFaFaSiDaSoWi
 - 1. 6 children, 8 grandchildren, 3 great-grandchildren
 - ii. Elizabeth Shaner (1829 Lycoming, PA -1843 Lycoming, PA)
FaMoFaFaFaFaFaSiDaDa
 - iii. Isaac Shaner (1831 Lycoming, PA -1898 Parsippany, NJ)
FaMoFaFaFaFaFaSiDaSo = Amelia Chamberlain (1831 Parsippany, NJ -1879 Parsippany, NJ)
FaMoFaFaFaFaFaSiDaSoWi
 - 1. 4 children, 11 grandchildren, 5 great-grandchildren
 - iv. John Shaner (1833 Lycoming, PA -1900 Lycoming, PA)
FaMoFaFaFaFaFaSiDaSo
 - v. Thomas Shaner (1835 Lycoming, PA -1863 Lycoming, PA)
FaMoFaFaFaFaFaSiDaSo
 - vi. Adam Shaner (1835 Lycoming, PA -1868 Lycoming, PA)
FaMoFaFaFaFaFaSiDaSo
 - vii. Martha Shaner (1838 Lycoming, PA -1866 Augusta, ME)
FaMoFaFaFaFaFaSiDaDa = Samuel Kennedy (1822 Augusta, ME -1885 Augusta, ME) *FaMoFaFaFaFaFaSiDaDaHu*
 - 1. 7 children, 9 grandchildren, 4 great-grandchildren
 - viii. Wesley Shaner (1841 Lycoming, PA -1911 Lycoming, PA)
FaMoFaFaFaFaFaSiDaSo = Sarah Davenport (1843 Lycoming, PA -1862 Lycoming, PA) *FaMoFaFaFaFaFaSiDaSoWi*
 - 1. 3 children, 5 grandchildren, 9 great-grandchildren
 - f. Adolphus Smee (180 Lycoming, PA -?) *FaMoFaFaFaFaFaSiSo*
 - 13. Nancy Boatman (1788 Lycoming, PA - 1868 Lycoming, PA) *FaMoFaFaFaFaFaSi*

Chart 3: Chase Patrilineal Inventory

1. Governor William Bradford (1590 South Yorkshire, UK - 1657 Plymouth, MA) *FaFaFaFaFaFaFaFaFaFa* = Alice Carpenter (1590 Somerset, England - 1670 Plymouth, MA) *FaFaFaFaFaFaFaFaFaWi*
- a. William Bradford Jr. (1624 - 1703) *MoFaFaFaFaFaFaFaFa* = Alice Richards (1627 Somerset, England - 1671 Plymouth, MA) *MoFaFaFaFaFaFaFaFaWi*
- i. William Bradford (1654 Plymouth, MA - 1718 Plymouth, MA) *MoFaFaFaFaFaFaFaFa* = Mercy Warren (1653 Plymouth, MA - 1747 Plymouth, PA) *MoFaFaFaFaFaFaFaWi*
1. Ephraim Bradford (1690 Plymouth, MA - 1746 Plymouth, MA) *MoFaFaFaFaFaFaFa* = Rebecca Bartlett (1657 Plymouth, MA - 1740 Plymouth, MA) *MoFaFaFaFaFaFaWi*
- a. Jesse Bradford (1758 Plymouth, MA - 1829 Plymouth, MA) *MoFaFaFaFaFaFa* = Elizabeth Finney (1761 Plymouth, MA - 1834 Plymouth, MA) *MoFaFaFaFaFaWi*
- i. Birah Bradford (1793 Plymouth, MA - ?) *MoFaFaFaFaFa* = Hannah Rider (1792 Plymouth, MA - 1854 Plymouth, MA) *MoFaFaFaFaWi*
1. Alma Bradford Gilbert *MoFaFaFaBro*
2. Fanny Gilbert Chase *MoFaFaFaSi*
3. Harold Bradford Chase (1889 Plymouth, MA - 1952 Plymouth, MA) *MoFaFaFa* = Kathleen Williams (1992 Portland, ME - 1963 Portland, ME) *MoFaFaFaWi*
- a. William Bradford Chase (1913 Plymouth, MA - 2002 Portland, ME) *MoFaFa* = Hannah Clark (1915 Portland, ME - 1976 Portland, ME) *MoFaFaWi*
- i. Pricilla Chase (1939 Portland, ME - 2009 Portland, ME) *MoFaSi*
- ii. Cindy Chase (1941 Portland, ME - Present Portland, ME) *MoFaSi* = Forrest Gassick (1943 Vassalboro, ME - Present Portland, ME) *MoFaSiHu*
1. Cheston Gassick (1976 Portland, ME - Present Gorham, ME) *MoFaSiSo*
2. Alec Gassick (1979 Portland, ME - Present Birmingham, SC) *MoFaSiSo*
- iii. Bradford Chase (1945 Portland, ME - 2015 Cave Creek, AZ) *MoFa* = Nancy Hall (1949 Jefferson, IL - Present Cave Creek, AZ) *MoMo*
1. Jane Chase (1973 Fremont, CO - Present Phoenix, AZ) *Mo* = Chris Jennewine (1971 Littleton, CO - Present Phoenix, AZ) *Fa*
- A. Chase Jennewine (1996 Englewood, CO - Present Phoenix, AZ)

- B. Alyssa Jennewine (1999
Englewood, CO - Present
Bethlehem, PA) ***
2. Susan Chase (1975 Fremont,
CO - 2010 Cave Creek, AZ;
MoSi/Aunt) = Michael Koerner
(1973 Rock Springs, ID -
Present Phoenix, AZ;
MoSiHu/Uncle)
A. Brad Koerner (2002
Rockford, IL - Present Phoenix,
AZ; *MoSiSo/First cousin*)
B. Caroline Jennewine (2005
Cave Creek, AZ - Present
Phoenix, AZ *MoSiDa/First
cousin*)
- ii. Alice Bradford (1661Plymouth, MA - 1745 Plymouth, MA) *MoFaFaFaFaSi* = William
Adams (1650 Plymouth, MA - 1685 Plymouth, MA) *MoFaFaFaFaSiHu*
iii. Hannah Bradford (1662 Plymouth, MA - 1738 Plymouth, MA) *MoFaFaFaFaSi* = Joshua
Ripley (1658 Plymouth, MA - 1739 Plymouth, MA) *MoFaFaFaFaSiHu*
iv. Melatiah Bradford (1664 Plymouth, MA - 1739 Plymouth, MA) *MoFaFaFaFaSi* = John
Steele (1660 Plymouth, MA - 1698 Plymouth, MA) *MoFaFaFaFaSiHu*
1. Thomas Steele (1681 Plymouth, MA - 1739 Plymouth, MA) *MoFaFaFaFaSiSo* =
Susannah Webster (1686 Plymouth, MA - 1757 Plymouth, MA)
MoFaFaFaFaSiSoWi
a. Joshua Steele (1710 Plymouth, MA - 1756 Plymouth, MA)
MoFaFaFaFaSiSoSo = Hanna Fitch (1715 Plymouth, MA - 1765
Plymouth, MA) *MoFaFaFaFaSiSoSoWi*
i. Mary Steele (1749 Plymouth, MA - 1795 Plymouth, MA)
MoFaFaFaFaSiSoSoDa = John Rowley (1745 Plymouth, MA -
1805 Plymouth, MA) *MoFaFaFaFaSiSoSoDaHu*
1. 7 children, 28 grandchildren, 17 great grandchildren
b. Samuel Steele (1713 Plymouth, MA - 1779 Plymouth, MA)
MoFaFaFaFaSiSoSo = Elizabeth Merry (1711 Plymouth, MA - 1767
Plymouth, MA) *MoFaFaFaFaSiSoSoWi*
i. James Steele (1746 Plymouth, MA - 1810 Plymouth, MA)
MoFaFaFaFaSiSoSoSo = Hulda Steele (1749 Plymouth, MA -
1819 Plymouth, MA) *MoFaFaFaFaSiSoSoSoWi*
1. 3 children, 15 grandchildren, 25 great grandchildren...
ii. Lois Steele (1748 Plymouth, MA - 1798 Plymouth, MA)
MoFaFaFaFaSiSoSoDa = Nathaniel Spencer (1748 Plymouth,
MA - 1825 Plymouth, MA) *MoFaFaFaFaSiSoSoDaHu*
1. 5 children, 13 grandchildren, 21 great grandchildren...
iii. Sarah Steele (1750 Plymouth, MA - 1834)
MoFaFaFaFaSiSoSoDa = John Nicholson (1746 Plymouth, MA -
1796 Plymouth, MA) *MoFaFaFaFaSiSoSoDaHu*
1. 2 children, 3 grandchildren

- iv. Jesse Steele (1755 Plymouth, MA - 1815 Plymouth, MA)
MoFaFaFaFaSiSoSoSo = Lucinda Adams (1756 Plymouth, MA - 1828 Plymouth, MA) *MoFaFaFaFaSiSoSoSoWi*
1. 7 children, 11 grandchildren, 6 great grandchildren...
- v. Susanna Steele (1760 Plymouth, MA - 1836 Plymouth, MA)
MoFaFaFaFaSiSoSoDa = Isaac Deming (1758 Plymouth, MA - 1816 Plymouth, MA) *MoFaFaFaFaSiSoSoDaHu*
1. 3 children, 5 grandchildren, 3 great grandchildren
- vi. Elizabeth Steele (1763 Plymouth, MA - 1846 Plymouth, MA)
MoFaFaFaFaSiSoSoDa = Robert Brenton (1758 Plymouth, MA - 1833 Plymouth, MA) *MoFaFaFaFaSiSoSoDaHu*
1. 5 children, 13 grandchildren, 23 great grandchildren...
- vii. Anna Steele (1764 Plymouth, MA - 1826 Plymouth, MA)
MoFaFaFaFaSiSoSoDa = Benjamin Ingham (1756 Plymouth, MA - 1810 Plymouth, MA) *MoFaFaFaFaSiSoSoDaHu*
1. 6 children, 12 grandchildren, 5 great grandchildren...
- c. William Steele (1713 Plymouth, MA - 1777 Plymouth, MA)
MoFaFaFaFaSiSoSo = Lydia Seymour (1726 Plymouth, MA - 1801 Plymouth, MA) *MoFaFaFaFaSiSoSoWi*
 - i. William Steele (1742 Plymouth, MA - 1806 Plymouth, MA)
MoFaFaFaFaSiSoSoSo = Hannah Webster (1751 Plymouth, MA - 1831 Plymouth, MA) *MoFaFaFaFaSiSoSoSoWi*
1. 13 children, 24 grandchildren, 29 great grandchildren...
 - ii. Timothy Steele (1745 Plymouth, MA - 1777 Plymouth, MA)
MoFaFaFaFaSiSoSoSo = Abigail Church (1747 Plymouth, MA - ?) *MoFaFaFaFaSiSoSoSoWi*
1. 6 children, 13 grandchildren, 16 great grandchildren...
 - iii. Lydia Steele (1747 Plymouth, MA - 1779 Plymouth, MA)
MoFaFaFaFaSiSoSoDa = Ashbel Kellogg (1732 Plymouth, MA - 1806 Plymouth, MA) *MoFaFaFaFaSiSoSoDaHu*
1. 4 children, 19 grandchildren, 24 great grandchildren...
 - iv. Hulda Steele (1749 Plymouth, MA - 1819 Plymouth, MA)
MoFaFaFaFaSiSoSoDa = James Peck (?)
MoFaFaFaFaSiSoSoDaHu
1. 5 children, 2 grandchildren
 - v. Isaac Steele (1752 Plymouth, MA - 1835 Plymouth, MA)
MoFaFaFaFaSiSoSoSo = Dorothy Pitkin (1758 Plymouth, MA - 1792 Plymouth, MA) *MoFaFaFaFaSiSoSoSoWi*
1. 8 children, 11 grandchildren, 7 great grandchildren...
 - vi. Seth Steele (1757 Plymouth, MA - 1829 Plymouth, MA)
MoFaFaFaFaSiSoSoSo = Hannah Keeney (1758 Plymouth, MA - 1800 Plymouth, MA) *MoFaFaFaFaSiSoSoSoWi*
1. 9 children, 6 grandchildren, 12 great grandchildren...
- d. Susanna Steele (1715 Plymouth, MA - 1798 Plymouth, MA)
MoFaFaFaFaSiSoDa = Thomas Hosmer (1701 Plymouth, MA - 1777 Plymouth, MA) *MoFaFaFaFaSiSoDaHu*

- i. Susannah Hosmer (1737 Plymouth, MA - 1812 Plymouth, MA)
MoFaFaFaFaSiSoDaDa = Joel Kellogg (1733 Plymouth, MA - 1789 Plymouth, MA) *MoFaFaFaFaSiSoDaDaHu*
1. 10 children, 24 grandchildren, 15 great grandchildren...
- ii. Thomas Hosmer (1739 Plymouth, MA - 1835 Plymouth, MA)
MoFaFaFaFaSiSoDaSo = Hannah Everett (1751 Plymouth, MA - 1826 Plymouth, MA) *MoFaFaFaFaSiSoDaSoWi*
1. 6 children, 12 grandchildren, 23 great grandchildren...
- iii. Deborah Hosmer (1741 Plymouth, MA - 1776 Plymouth, MA)
MoFaFaFaFaSiSoDaDa
- iv. Eldad Hosmer (1743 Plymouth, MA - 1820 Plymouth, MA)
MoFaFaFaFaSiSoDaSo = Thankfuk Seymour (1748 Plymouth, MA - 1790 Plymouth, MA) *MoFaFaFaFaSiSoDaSoWi*
1. 7 children, 14 grandchildren, 12 great grandchildren...
- v. Ruth Hosmer (1744 Plymouth, MA - 1818 Plymouth, MA)
MoFaFaFaFaSiSoDaDa = Ephraim Kellogg (1740 - 1819)
MoFaFaFaFaSiSoDaDaHu
1. 7 children, 4 grandchildren, 3 great grandchildren...
- vi. Daniel Hosmer (1747 Plymouth, MA - 1800 Plymouth, MA)
MoFaFaFaFaSiSoDaSo = Mary Belding (1751 Plymouth, MA - ?) *MoFaFaFaFaSiSoDaSoWi*
1. 5 children, 7 grandchildren, 11 great grandchildren...
- vii. Elisha Hosmer (1753 Plymouth, MA - 1779 Plymouth, MA)
MoFaFaFaFaSiSoDaDa
- viii. Simeon Hosmer (1754 Plymouth, MA - 1831 Plymouth, MA)
MoFaFaFaFaSiSoDaSo = Lucretia Steele (1753 Plymouth, MA - 1829 Plymouth, MA) *MoFaFaFaFaSiSoDaSoWi*
1. 5 children, 3 grandchildren
- ix. Ashbel Hosmer (1758 Plymouth, MA - 1812 Plymouth, MA)
MoFaFaFaFaSiSoDaSo = Mary Belden (1765 Plymouth, MA - 1838 Plymouth, MA) *MoFaFaFaFaSiSoDaSoWi*
1. 10 children, 17 grandchildren, 9 great grandchildren...
- e. James Steele (1719 Plymouth, MA - 1766 Plymouth, MA)
MoFaFaFaFaSiSoSo = Lois Ensign (1727 Plymouth, MA - 1782 Plymouth, MA) *MoFaFaFaFaSiSoSoWi*
 - i. James Steele (1746 Plymouth, MA - 1810 Plymouth, MA)
MoFaFaFaFaSiSoSoSo = Hulda Steele (1749 Plymouth, MA - 1819 Plymouth, MA) *MoFaFaFaFaSiSoSoSoWi*
 - ii. Lois Steele (1748 Plymouth, MA - 1798 Plymouth, MA)
MoFaFaFaFaSiSoDa = Nathaniel Spencer (1748 Plymouth, MA - 1825 Plymouth, MA) *MoFaFaFaFaSiSoDaHu*
 - iii. Sarah Steele (1750 Plymouth, MA - 1834 Plymouth, MA)
MoFaFaFaFaSiSoSoDa = John Nicholson (1746 Plymouth, MA - 1796 Plymouth, MA) *MoFaFaFaFaSiSoDaHu*
 - iv. John Steele (1753 Plymouth, MA - 1776 Plymouth, MA)
MoFaFaFaFaSiSoSoSo

- v. Elizabeth Steele (1763 Plymouth, MA - 1846 Plymouth, MA)
MoFaFaFaFaSiSoSoDa = Robert Brenton (1758 Plymouth, MA - 1833 Plymouth, MA) *MoFaFaFaFaSiSoSoDaHu*
- f. Nathan Steele (1721 Plymouth, MA - 1789 Plymouth, MA)
MoFaFaFaFaSiSoSo = Susanna Olmstead (1719 Plymouth, MA - 1764 Plymouth, MA) *MoFaFaFaFaSiSoSoWi*
 - i. Frederick Steele (1762 Plymouth, MA - 1825 Plymouth, MA)
MoFaFaFaFaSiSoSoSo = Sabra Shepard (1766 Plymouth, MA - 1834 Plymouth, MA) *MoFaFaFaFaSiSoSoWi*
 - ii. Anna Steele (1753 Plymouth, MA - 1803 Plymouth, MA)
MoFaFaFaFaSiSoSoDa
 - iii. Nathaniel Steele (1747 Plymouth, MA - 1823 Plymouth, MA)
MoFaFaFaFaSiSoSoSo = Bethia Center (1748 Plymouth, MA - 1829 Plymouth, MA) *MoFaFaFaFaSiSoSoWi*
- g. John Steele (1723 Plymouth, MA - 1804 Plymouth, MA)
MoFaFaFaFaSiSoSo = Christian Flowers (1720 Plymouth, MA - 1799 Plymouth, MA) *MoFaFaFaFaSiSoSoWi*
 - i. Ebenezer Steele (1751 Plymouth, MA - 1805 Plymouth, MA)
MoFaFaFaFaSiSoSoSo = Rachael Seymour (1753 Plymouth, MA - 1839 Plymouth, MA) *MoFaFaFaFaSiSoSoWi*
 - ii. Aaron Steele (1752 Plymouth, MA - 1762 Plymouth, MA)
MoFaFaFaFaSiSoSoSo
 - iii. Moses Steele (1757 Plymouth, MA - 1832 Plymouth, MA)
MoFaFaFaFaSiSoSoSo = Nancy Whiting (1758 Plymouth, MA - ?) *MoFaFaFaFaSiSoSoWi*
 - iv. Aaron Steele (1760 Plymouth, MA - 1804 Plymouth, MA)
MoFaFaFaFaSiSoSoSo = Mary Kellogg (1764 Plymouth, MA - 1822 Plymouth, MA) *MoFaFaFaFaSiSoSoWi*
 - v. Pitt Steele (1767 Plymouth, MA - 1770 Plymouth, MA)
MoFaFaFaFaSiSoSoSo
- h. Bradford Steele (1734 Plymouth, MA - 1804 Plymouth, MA)
MoFaFaFaFaSiSoSo = Mary Perkins (1731 Plymouth, MA - 1788 Plymouth, MA) *MoFaFaFaFaSiSoSoWi*
 - i. Mary Steele (1764 Plymouth, MA - 1847 Plymouth, MA)
MoFaFaFaFaSiSoSoDa = Edward Warren (1761 Plymouth, MA - 1814 Plymouth, MA) *MoFaFaFaFaSiSoSoDaHu*
 - ii. Bradford Steele (1766 Plymouth, MA - 1841 Plymouth, MA)
MoFaFaFaFaSiSoSoSo
- 2. Abiel Steele (1693 Plymouth, MA - 1769 Plymouth, MA) *MoFaFaFaFaSiSoDa* = Cpt. John Webster (1680 Plymouth, MA - 1753 Plymouth, MA)
MoFaFaFaFaSiSoDaHu
 - a. Thankful Webster (1713 Plymouth, MA - 1771 Plymouth, MA)
MoFaFaFaFaSiSoDaDa = William Blanchard (1704 Plymouth, MA - 1769 Plymouth, MA) *MoFaFaFaFaSiSoDaDaHu*
 - b. Elisha Webster (1713 Plymouth, MA - 1788 Plymouth, MA)
MoFaFaFaFaSiSoDaDa

- c. Sarah Webster (1722 Plymouth, MA - 1755 Plymouth, MA)
MoFaFaFaFaSiSoDaDa = William Root (1724 Plymouth, MA - 1782 Plymouth, MA) *MoFaFaFaFaSiSoDaDaHu*
- d. Ann Webster (1724 Plymouth, MA - 1818 Plymouth, MA)
MoFaFaFaFaSiSoDaDa = Joseph Nichols (1712 Plymouth, MA - 1773 Plymouth, MA) *MoFaFaFaFaSiSoDaDaHu*
- e. Susannah Webster (1726 Plymouth, MA - 1748 Plymouth, MA)
MoFaFaFaFaSiSoDaDa = Ebenezer Scott (1723 Plymouth, MA - 1778 Plymouth, MA) *MoFaFaFaFaSiSoDaDaHu*
- v. Samuel Bradford (1668 Plymouth, MA - 1714 Plymouth, MA) *MoFaFaFaFaBro* = Hannah Rogers (1668 Plymouth, MA - 1733 Plymouth, MA) *MoFaFaFaFaBroWi*
- vi. Mary Bradford (1668 Plymouth, MA - 1720 Plymouth, MA) *MoFaFaFaFaSi* = William Hunt (1655 Plymouth, MA - 1726 Plymouth, MA) *MoFaFaFaFaSiHu*
 - 1. Mary Hunt (1687 Plymouth, MA - 1716 Plymouth, MA) *MoFaFaFaFaSiDa* = Nathaniel Knowles (1666 Plymouth, MA - 1732 Plymouth, MA)
MoFaFaFaFaSiDaHu
 - a. Rebecca Knowles (1710 Plymouth, MA - ?) *MoFaFaFaFaSiDaDa* = Ephraim Sheldon (1699 Plymouth, MA - ?) *MoFaFaFaFaSiDaDaHu*
 - i. William Sheldon (1731 Plymouth, MA - ?)
MoFaFaFaFaSiDaDaSo = Lydia Monroe (1724 - 1768 Charleston, SC) *MoFaFaFaFaSiDaDaSoWi*
 - b. Mary Knowles (1713 Plymouth, MA - 1759 Plymouth, MA)
MoFaFaFaFaSiDaDa = William Luddington (1702 Plymouth, MA - 1762 Plymouth, MA) *MoFaFaFaFaSiDaDaHu*
 - i. Submit Luddington (1732 Plymouth, MA - 1784 Plymouth, MA)
MoFaFaFaFaSiDaDaSo = Stephen Johnson (1727 Plymouth, MA - ?) *MoFaFaFaFaSiDaDaSoWi*
 - ii. Henry Luddington (1739 Plymouth, MA - 1817 Plymouth, MA)
MoFaFaFaFaSiDaDaSo
 - iii. Samuel Luddington (1744 Plymouth, MA - 1814 Plymouth, MA)
MoFaFaFaFaSiDaDaSo = Ruth Galphin (1745 Plymouth, MA - 1831 Plymouth, MA) *MoFaFaFaFaSiDaDaSoWi*
 - iv. Stephen Luddington (1753 Plymouth, MA - 1757 Plymouth, MA)
MoFaFaFaFaSiDaDaSo
 - c. Malatiah Knowles (1715 Plymouth, MA - ?) *MoFaFaFaFaSiDaDa* = William Hunt (1711 Plymouth, MA - ?) *MoFaFaFaFaSiDaDaHu*
 - 2. William Hunt (1693 Plymouth, MA - 1769 Plymouth, MA) *MoFaFaFaFaSiSo* = Jane Tilton (1697 Plymouth, MA - 1732 Plymouth, MA) *MoFaFaFaFaSiSoWi*
 - a. Mary Hunt (1721 Plymouth, MA - 1789 Plymouth, MA)
MoFaFaFaFaSiSoDa
 - b. Jane Hunt (1723 Plymouth, MA - 1760 Plymouth, MA)
MoFaFaFaFaSiSoDa = Samuel Nickerson (1720 Plymouth, MA - 1771 Plymouth, MA) *MoFaFaFaFaSiSoDaHu*
 - i. Jane Nickerson (1747 Plymouth, MA - ?)
MoFaFaFaFaSiSoDaDa = Robert Thompson (1740 Plymouth, MA - ?) *MoFaFaFaFaSiSoDaDaHu*

- ii. Nathaniel Nickerson (1751 Plymouth, MA - ?)
MoFaFaFaFaSiSoDaSo = Lydia Hillman (1760 Plymouth, MA - ?)
MoFaFaFaFaSiSoDaSoWi
- c. Sarah Hunt (1726 Plymouth, MA - ?) *MoFaFaFaFaSiSoDa* = Timothy Hatch (1731 Plymouth, MA - 1790 Norfolk, MA) *MoFaFaFaFaSiSoDaHu*
- d. Samuel Hunt (1727 Plymouth, MA - 1800 Plymouth, MA)
MoFaFaFaFaSiSoSo = Lois Mayhew (1712 Plymouth, MA - 1802 Plymouth, MA) *MoFaFaFaFaSiSoSoWi*
 - i. Lois Hunt (1745 Plymouth, MA - ?) *MoFaFaFaFaSiSoSoDa* = Medad Tupper (1746 Plymouth, MA - 1800 Waldo, ME)
MoFaFaFaFaSiSoSoDaHu
 - ii. Ephriam Hunt (1756 Plymouth, MA - 1802 Plymouth, MA) *MoFaFaFaFaSiSoSoSo* = Mary Kempton (1764 Plymouth, MA - ?) *MoFaFaFaFaSiSoSoSoWi*
- vii. Sarah Bradford (1671 Plymouth, MA - 1705 Plymouth, MA) *MoFaFaFaFaSi* = Keneim Baker (1657 Plymouth, MA - 1713 Plymouth, MA) *MoFaFaFaFaSiHu*
 - 1. Sarah Baker (1688 Plymouth, MA - 1765 Plymouth, MA) *MoFaFaFaFaSiDa* = John Sherman (1682 Plymouth, MA - 1765 Plymouth, MA) *MoFaFaFaFaSiDaHu*
 - a. Sarah Sherman (1714 Plymouth, MA - 1750 Plymouth, MA)
MoFaFaFaFaSiDaDa = Barzillai Hammond (1706 Barnstable MA - 1779 Plymouth, MA) *MoFaFaFaFaSiDaDaHu*
 - b. Jane Sherman (1716 Plymouth, MA - 1758 Plymouth, MA)
MoFaFaFaFaSiDaDa = Justice White (1707 Plymouth, MA - 1753 Plymouth, MA) *MoFaFaFaFaSiDaDaHu*
 - c. Alice Sherman (1719 Plymouth, MA - 1801 Plymouth, MA)
MoFaFaFaFaSiDaDa = Samuel Ruggles (1715 Plymouth, MA - 1802 Plymouth, MA) *MoFaFaFaFaSiDaDaHu*
 - d. Abigail Sherman (1721 Plymouth, MA - 1785 Plymouth, MA)
MoFaFaFaFaSiDaDa
 - e. John Sherman (1721 Plymouth, MA - 1802 Berkshire, MA)
MoFaFaFaFaSiDaSo
 - f. Bethiah Sherman (1724 Plymouth, MA - 1788 Barnstable, MA)
MoFaFaFaFaSiDaDa = John Winslow (1722 Barnstable, MA - 1774 Barnstable, MA) *MoFaFaFaFaSiDaDaHu*
 - g. William Sherman (1726 Plymouth, MA - 1800 Berkshire, MA)
MoFaFaFaFaSiDaSo = Abigail Handy (1731 Berkshire, MA - 1809 Berkshire, MA) *MoFaFaFaFaSiDaSoWi*
 - i. Thankful Winslow (1755 Berkshire, MA - 1840 Waldo, ME)
MoFaFaFaFaSiDaSoDa = Jabez Sherman (1754 Berkshire, MA - 1845 Waldo, ME) *MoFaFaFaFaSiDaSoDaHu*
 - ii. Cornelius Sherman (1756 Berkshire, MA - 1802 Berkshire, MA)
MoFaFaFaFaSiDaSoSo = Deliverance Handy (1765 Berkshire, MA - 1844 Berkshire, MA) *MoFaFaFaFaSiDaSoSo*
 - iii. Abigail Sherman (1758 Berkshire, MA - 1789 Berkshire, MA)
MoFaFaFaFaSiDaSoDa = Edmund Snow (1753 Berkshire, MA - 1807 Berkshire, MA) *MoFaFaFaFaSiDaSoDaHu*
 - iv. Alice Sherman (1761 Berkshire, MA - 1801 Berkshire, MA)
MoFaFaFaFaSiDaSoDa

- v. Sarah Sherman (1764 Berkshire, MA - 1830 Berkshire, MA) *MoFaFaFaFaSiDaSoDa* = Abraham Taber (1762 Berkshire, MA - ?) *MoFaFaFaFaSiDaSoDaHu*
- vi. Jonathan Sherman (1766 Berkshire, MA - ?)
MoFaFaFaFaSiDaSoSo
- vii. Susanna Sherman (1768 Berkshire, MA - 1862 Berkshire, MA)
MoFaFaFaFaSiDaSoDa = Zebulon Haskell (1753 Berkshire, MA - 1831 Berkshire, MA) *MoFaFaFaFaSiDaSoDaHu*
- viii. Lemuel Sherman (1778 Berkshire, MA - 1865 Berkshire, MA)
MoFaFaFaFaSiDaSoSo
- 2. Alice Baker (1690 Plymouth, MA - 1715 Plymouth, MA) *MoFaFaFaFaSiDa*
- 3. Eleanor Baker (1692 Plymouth, MA - 1727 Plymouth, MA) *MoFaFaFaFaSiDa* = Benjamin Phillips (1687 Plymouth, MA - 1750 Plymouth, MA)
MoFaFaFaFaSiDaHu
- 4. Abigail Baker (1693 Plymouth, MA - 1753 Plymouth, MA) *MoFaFaFaFaSiDa* = Gideon Thomas (1692 Plymouth, MA - 1766 Plymouth, MA)
MoFaFaFaFaSiDaHu
- 5. Kenelm Baker (1695 Plymouth, MA - 1771 Plymouth, MA) *MoFaFaFaFaSiSo* = Patience Doty (1697 Plymouth, MA - 1784 Plymouth, MA) *MoFaFaFaFaSiSoWi*
- 6. Samuel Baker (1702 Plymouth, MA - 1793 Plymouth, MA) *MoFaFaFaFaSiSo* = Hannah Ford (1705 Plymouth, MA - 1800 Plymouth, MA) *MoFaFaFaFaSiSoWi*
- 7. Edward Baker (1705 Plymouth, MA - 1781 Plymouth, MA) *MoFaFaFaFaSiSo*
- 8. William Baker (1705 Plymouth, MA - 1785 Plymouth, MA) *MoFaFaFaFaSiSo* = Sarah Hurd (1712 Plymouth, MA - ?) *MoFaFaFaFaSiSo*

Chart 4: Hall/Capps Patrilineal Inventory

1. Joseph McElrath (1690 Antrim, Northern Ireland - ? Virginia, USA) *MoMoMoFaMoMoMoFaFaFa=*
Katherine Avaerharte (1696 Ireland - 1813 Madison, GA) *MoMoMoFaMoMoMoFaFaMo*
 - a. John McElwrath (1715 Ireland - Rowan, NC) *MoMoMoFaMoMoMoFaFa=* Anges McDowell (1720 Rockbridge, VA - 1793 Rowan, NC) *MoMoMoFaMoMoMoFaMo*
 - i. Joseph McElrath (1756 Rowan, NC - 1816 Sumner, TN) *MoMoMoFaMoMoMoFa=*
Elizabeth Kelly (1760 Sumner, TN - 1825 Sumner, TN) *MoMoMoFaMoMoMoMo*
 1. Nancy McElrath (1785 Rowan, NC - 1836 Jefferson, IL) *MoMoMoFaMoMoMoMo =*
Abraham Rogers (1771 Sumner, TN - 1831 Jefferson, IL) *MoMoMoFaMoMoFa*
 - a. Eliza Rogers (1821 Sumner, TN - 1889 Jefferson, IL) *MoMoMoFaMoMo=*
William Thorn (1805 Montgomery, VA - 1873 Jefferson, IL)
MoMoMoFaMoFa
 - i. Mona Thorn (1853 Jefferson, IL - 1939 Jefferson, IL)
MoMoMoFaMo = William Capps (1837 Illinois, USA - 1915
Jefferson, IL) *MoMoMoFaFa*
 1. Lester Capps (1881 Illinois, USA - ?) *MoMoMoFaBro*
 2. Gertrude Capps (1882 Cook, IL - ?) *MoMoMoFaSi*
 3. Paul Capps (1885 Jefferson, IL - 1941 Jefferson, IL)
MoMoMoFa = Bernice Begemann (1885 Randolph, IL -
1967 Jefferson, IL) *MoMoMoFaWi*
 - a. Virginia Capps (1912 Jefferson, IL - 2010
Phoenix, AZ) *MoMoMo =* Charles Hall (1912
Jefferson, IL - 1966 Jefferson, IL) *MoMoMoHu*
 - i. Allen Hall (1944 Jefferson, IL - Present
Scottsdale, AZ) *MoMoBro =* Bunny
Dunlap (1950 Richmond, VA - Present
Scottsdale, AZ) *MoMoBro*
 1. Charles Hall (1976 Scottsdale,
AZ - Present Paradise Valley,
AZ) *MoMoBroSo =* Rachel
Moyer (1979 Tucson, AZ -
Present Paradise Valley, AZ)
MoMoBroSoWi
 - A. Charles Hall (2011 Paradise
Valley, AZ - Present Paradise
Valley, AZ) *MoMoBroSoSo*
 2. Andy Hall (1978 Scottsdale, AZ
- Present New York, NY)
MoMoBroSo = Elizabeth
Bentley (1980 Long Island, NY -
Present New York, NY)
MoMoBroSoWi
 - A. Colin Hall (2009 Rochester, NY
- Present New York, NY)
MoMoBroSoSo
 - ii. Charles Hall (1942 Jefferson, IL -
Present Scottsdale, AZ) *MoMoBro =*
Camille Corneil (1946 Scottsdale, AZ -

Present Paradise Valley, AZ)
MoMoBroWi

1. Lauren Hall (1978 Paradise
Valley, AZ - Present San
Francisco, CA) *MoMoBroDa =*
Cale Miller (1977 Antioch, CA -
Present San Francisco, CA)
MoMoBroDaHu
- A. Bradley Miller (2005 San
Francisco, CA - Present San
Francisco, CA) *MoMoBroDaSo*
- B. Marley Miller (2006 San
Francisco, CA - Present San
Francisco, CA) *MoMoBroDaDa*
2. Lindsay Hall (1979 Paradise
Valley, US - Present Corona,
CA) *MoMoBroDa =* Matt
Baumiffer (1975 Sonoma, CA -
Present Corona, CA)
MoMoBroDaHu
- A. Keaton Baumiffer (2009
Scottsdale, AZ - Present
Corona, CA) *MoMoBroDaSo*
- B. Madison Baumiffer (2011
Scottsdale, AZ - Present
Corona, CA) *MoMoBroDaDa*
- iii. Susan Hall (1944 Jefferson, IL - Present
Peoria, AZ) *MoMoSi*
- iv. Alice Hall (1946 Jefferson, IL - 2018
Phoenix, AZ) *MoMoSi =* Don Bayer
(1944 Scottsdale, AZ - Present
Scottsdale, AZ) *MoMoSiHu*
 1. Emily Bayer (1975 Phoenix, AZ
- Present Las Vegas, NV)
MoMoSiDa
 2. Ellen Bayer (1977 Phoenix, AZ -
Present Paradise Valley, AZ)
MoMoSiDa
- v. Nancy Hall (1949 Jefferson, IL - Present
Cave Creek, AZ) *MoMo =* Bradford
Chase (1945 Portland, ME - 2016 Cave
Creek, AZ) *MoFa*
 1. Jane Chase (1973 Freemont,
CO - Present Phoenix, AZ) *Mo*
= Jon Jennewine (1971
Littleton, CO - Present Phoenix,
AZ) *Fa*

- | | |
|---|--|
| <p>A. Chase Jennewine (1996
Englewood, CO - Present
Phoenix, AZ) <i>Bro</i></p> <p>B. Alyssa Jennewine (1999
Englewood, CO - Present
Bethlehem, PA)***</p> <p>2. Susan Chase (1974 Littleton,
CO - 2014 Cave Creek, AZ)
<i>MoSi</i> = Michael Koerner (1973
Rock Springs, ID - Present
Phoenix, AZ) <i>MoSiHu</i></p> <p>A. Brad Koerner (2002 Rock
Springs, ID - Present Phoenix,
AZ) <i>MoSiSo</i></p> <p>B. Caroline Koerner (2005 Cave
Creek, AZ - Present Phoenix,
AZ) <i>MoSiDa</i></p> <p>4. Nellie Capps (1890 Illinois, USA - 1976 Maine, USA)
<i>MoMoMoFaSi</i> = Clyde Valentine (1892 Grays Harbor,
WA - 1978 Franklin, ME) <i>MoMoMoFaSiHu</i></p> <p>5. Charlotte Capps (1892 Jefferson, IL - ?) <i>MoMoMoFaSi</i></p> | |
|---|--|