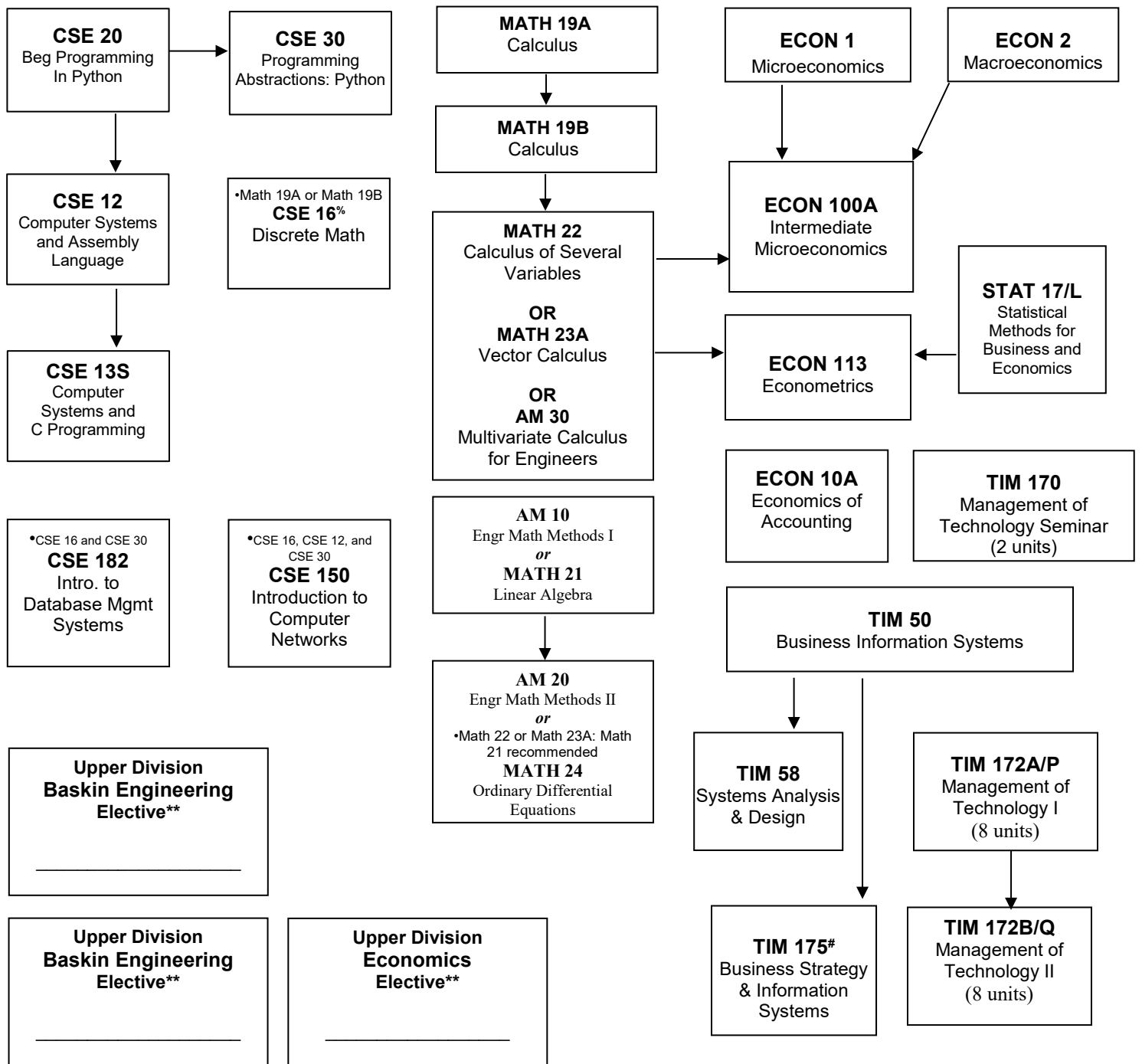


# Technology & Information Management B.S. Degree 2024-2025 Curriculum Chart



**Comprehensive Requirement**  
Completion of TIM 172A/P, TIM 172B/Q and TIM 175 satisfies the comprehensive requirement

# - TIM 175 satisfies the DC requirement  
% - CSE 20 or CSE 30 recommended prior to taking CSE 16  
\*\* - See back of chart for additional elective information

## Technology & Information Management B.S. Degree 2024-2025 Curriculum Chart

Fall _____	Winter _____	Spring _____	Summer _____

Fall _____	Winter _____	Spring _____	Summer _____

Fall _____	Winter _____	Spring _____	Summer _____

Fall _____	Winter _____	Spring _____	Summer _____

**Baskin Engineering Electives:**

For the Baskin Engineering electives, students' choices are any 5-unit upper division or graduate Baskin Engineering course, with these exceptions: You can take STAT 131 or CSE 107, but not both, and at most one independent study or field-study (with prior approval from the Department to be used as an elective).

**Economics Electives:**

Students can use any 5 unit upper division Econ course numbered 100-190 not already required for the major. The following Economics courses are strongly recommended for TIM majors:

Econ 100B	Intermediate Macroeconomics	Econ 133	Security Markets and Financial Institutions
Econ 101	Managerial Economics	Econ 135	Corporate Finance
Econ 115	Introduction to Management Sciences	Econ 136	Business Strategy
Econ 130	Money and Banking	Econ 161A	Marketing
Econ 131	International Financial Markets		