

**WPI**



**London Borough  
of Hounslow**

# **OUR FELTHAM:**

*Rediscovering the cultural identity of a  
post-industrial town*

---

Meredith Forcier | Hannah Mikkila | Kyle Reese | Jonathan Sanchez | Nicholas Wotton



# Meet the Team



**Meredith Forcier**  
Biomedical Engineering



**Hannah Mikkila**  
Mechanical Engineering



**Kyle Reese**  
Robotics Engineering & Computer Science



**Jonathan Sanchez**  
Mechanical Engineering & Robotics Engineering



**Nicholas Wotton**  
Mathematical Sciences



*Why are we in Feltham?*

To contribute to the *revitalization efforts*  
and *renew* the *identity* of Feltham by  
exploring and documenting its  
industrial and cultural *heritage*

# Project Objectives & Deliverables

## Document

*To **document** the cultural heritage and history of Feltham to preserve it for future generations*

## Identify

*To **identify** key aspects of Feltham's identity that can support its revitalization*

## Highlight

*To **highlight** historical locations and prominent people that shaped Feltham for both locals and visitors*

# Project Objectives & Deliverables

**Document**



*Encyclopedia  
Felthamica*

**Identify**



Design  
Recommendations

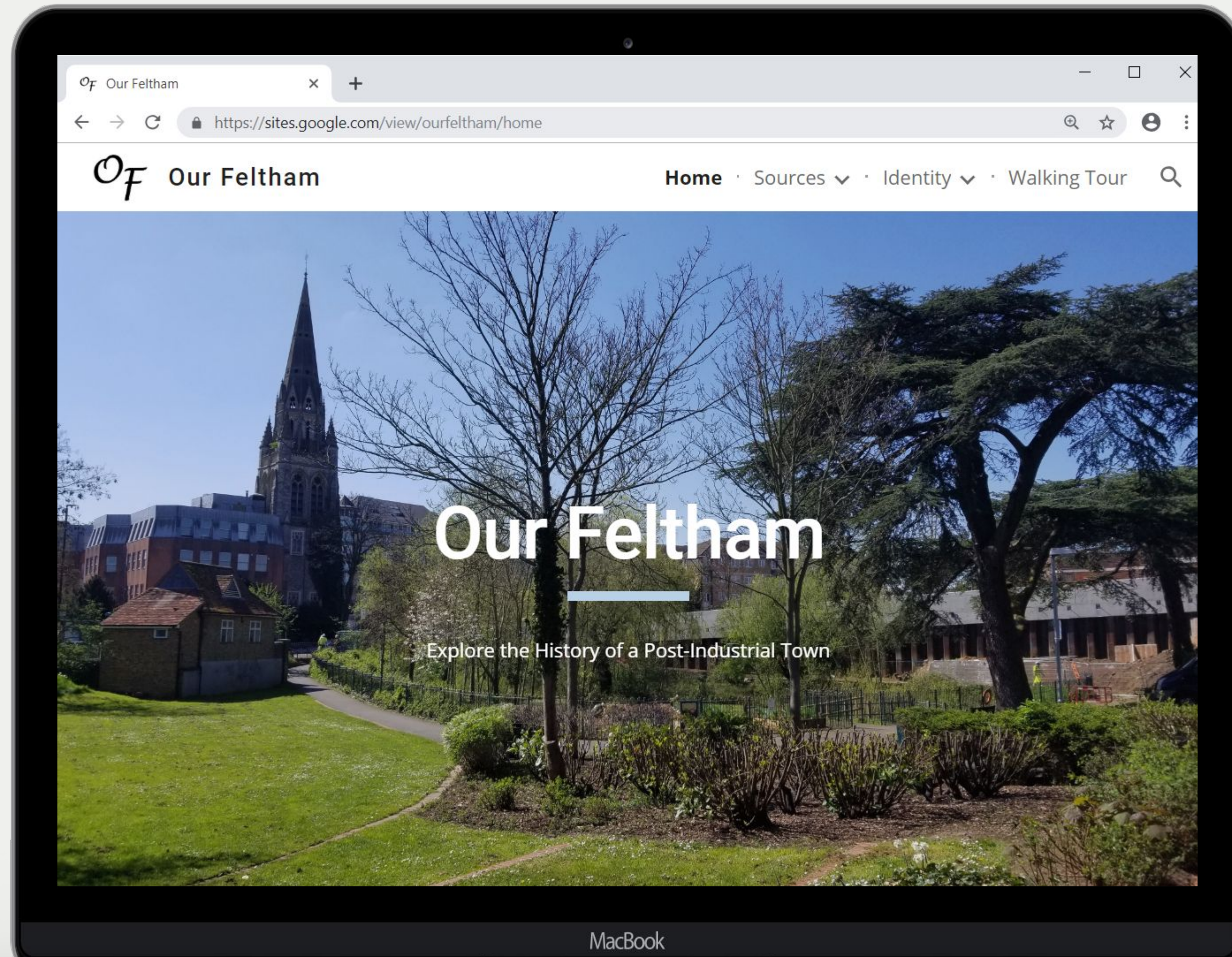
**Highlight**



Walking Tour &  
Promotional Video



# Our Feltham Website





# Bibliography

We consulted many sources while pursuing this project. Some relate directly to Feltham, while others pertain to examples of other cities similar in various ways to Feltham. We've compiled this list of those works so that anyone can expand our research or find some information on their own. The following Bibliography is not comprehensive of all sources used in the creation of our project; it is a sorted, trimmed version of that which appears at the ends of our paper and the *Encyclopedia Felthamica*.

## Bibliography

### Feltham and Hounslow

American Air Museum in Britain. (2014, October 2). Heston Military site : Airfield. Retrieved from <http://www.americanairmuseum.com/place/169>



# Interviews

## Interviewees

**Richard Clarke** - Feltham Community Member

**David Lawrie** - Volunteer with *Environment Trust*, Trustee of *Kempton Steam Museum* and *Hampton and Kempton Waterworks Railway*

**Brigitte Faubert** - *Hounslow Rotary Club* Member, Hounslow Community Member

**James Marshall** - Local Studies and Archives Manager, *Feltham History Group* Member

**Angela Parton** - *Friends of Bridge House Pond* Vice Chair, *Feltham Ponds Clean up Volunteers* Coordinator, *Feltham History Group* Member

**Alan Rice** - *Feltham History Group* Secretary

**Eddie Munday** - *Feltham History Group* Member

**Chris Hern** - *Feltham History Group* Member

**Kathy Cox** - *Feltham History Group* Member



# Encyclopedia Felthamica

Encyclopedia Felthamica

Architecture

Businesses

People

Natural Features

## Encyclopedia Felthamica

### A.W. Smith

A prominent Market Gardener in the late 19th century, A.W. Smith grew a plethora of cabbages to support the growing demands in London. He constructed and owned his own portion of a private railway line which aided the transport of London nightsoil. The soil was poor at holding water and on one particularly hot summer day, hand wells were used to pump water into the fields.<sup>1</sup>

### Alfred Henry Moss

Was a prominent florist in Feltham in the mid to late 20th century. He cultivated many breeds of roses and exported many of them to America. Owned a nursery near Feltham House, where a number of glass houses were used to defend against frost in the winters.<sup>2</sup>

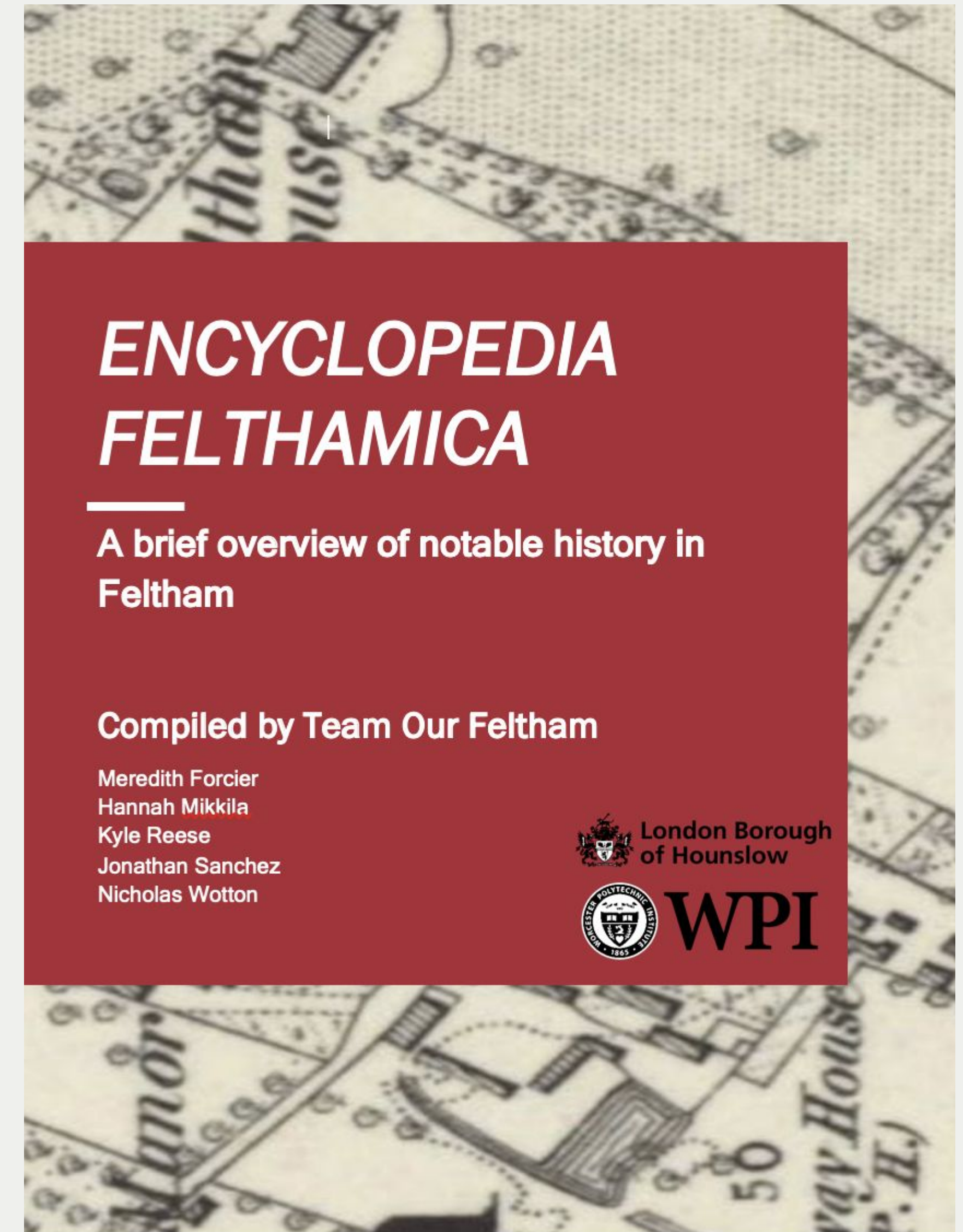
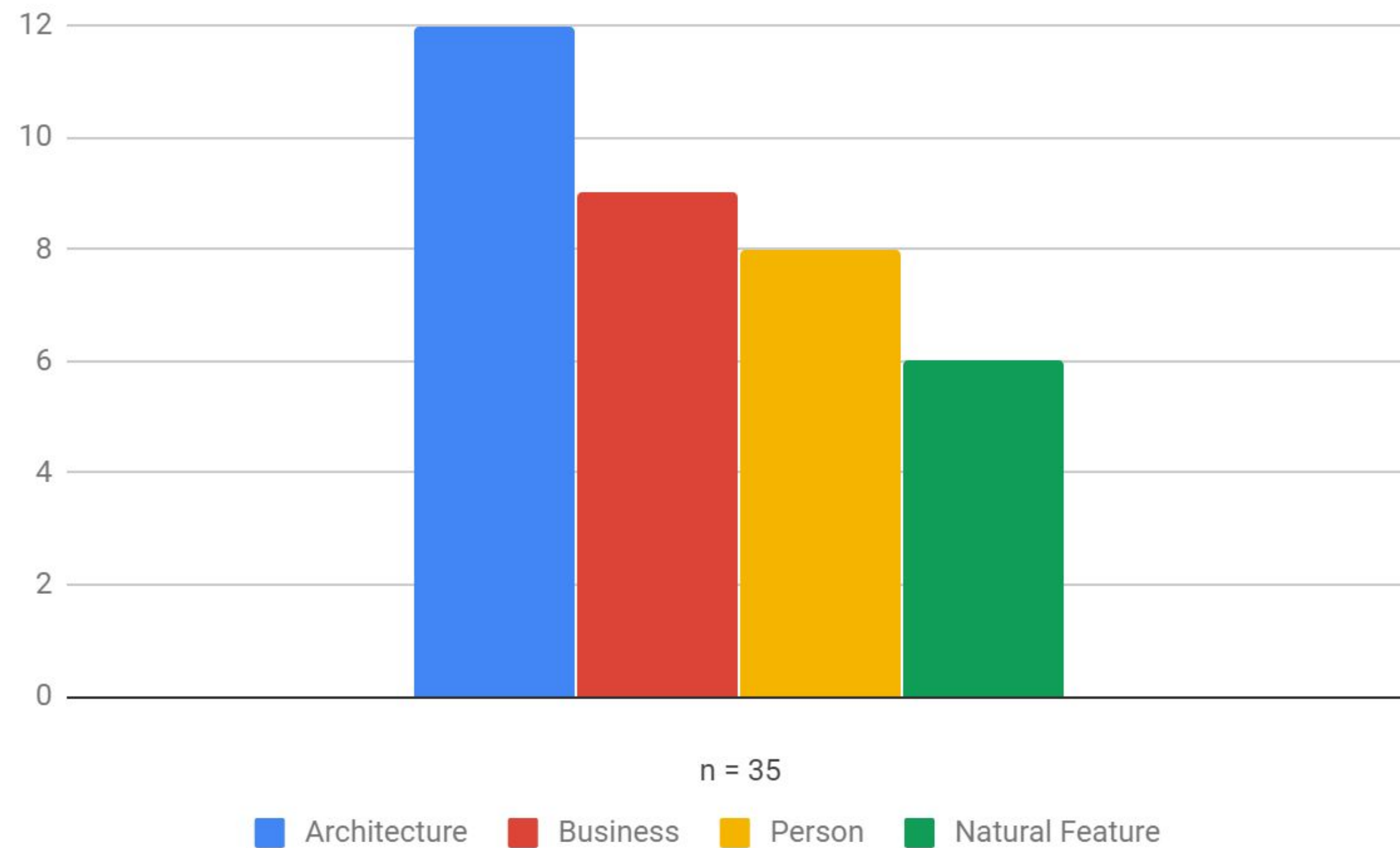
### Aston Martin

In 1926, David Brown moved the headquarters of Aston Martin to Feltham. He had taken over buildings that had been previously used by Whitehead Aircraft. While there was only partial manufacturing work that took place in the town, classics such as the DB3 were conceived in



# Encyclopedia Felthamica

## History By Type





# Architecture

Encyclopedia Felthamica

Architecture

Businesses

People

Natural Features

Bridge House - [Encyclopedia Felthamica entry](#).

Feltham House - [Encyclopedia Felthamica entry](#).

Feltham Lodge - [Encyclopedia Felthamica entry](#).

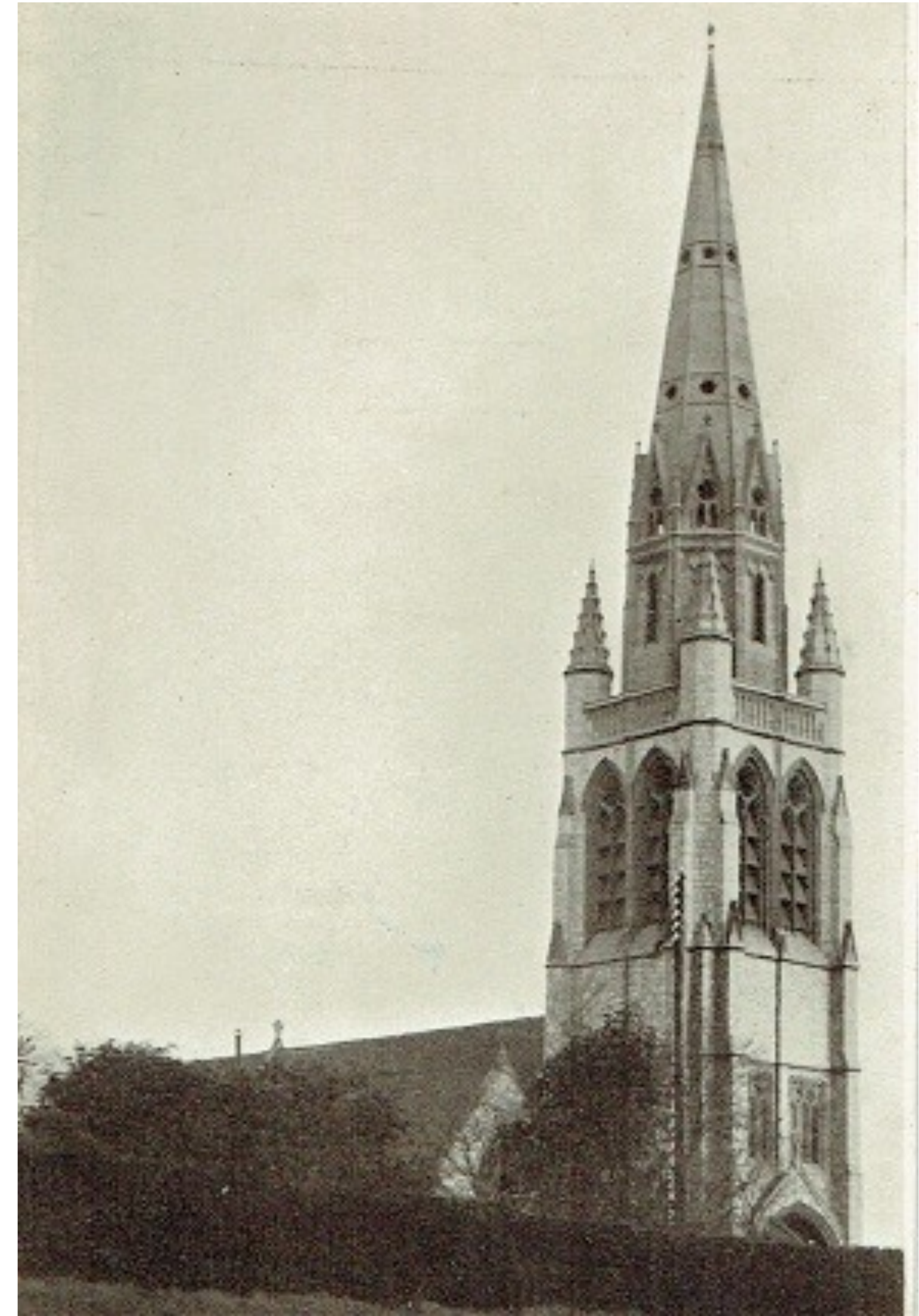




# Architecture



*Magistrates Court*



*St. Catherine's Spire*



Encyclopedia Felthamica

Architecture

Businesses

People

Natural Features

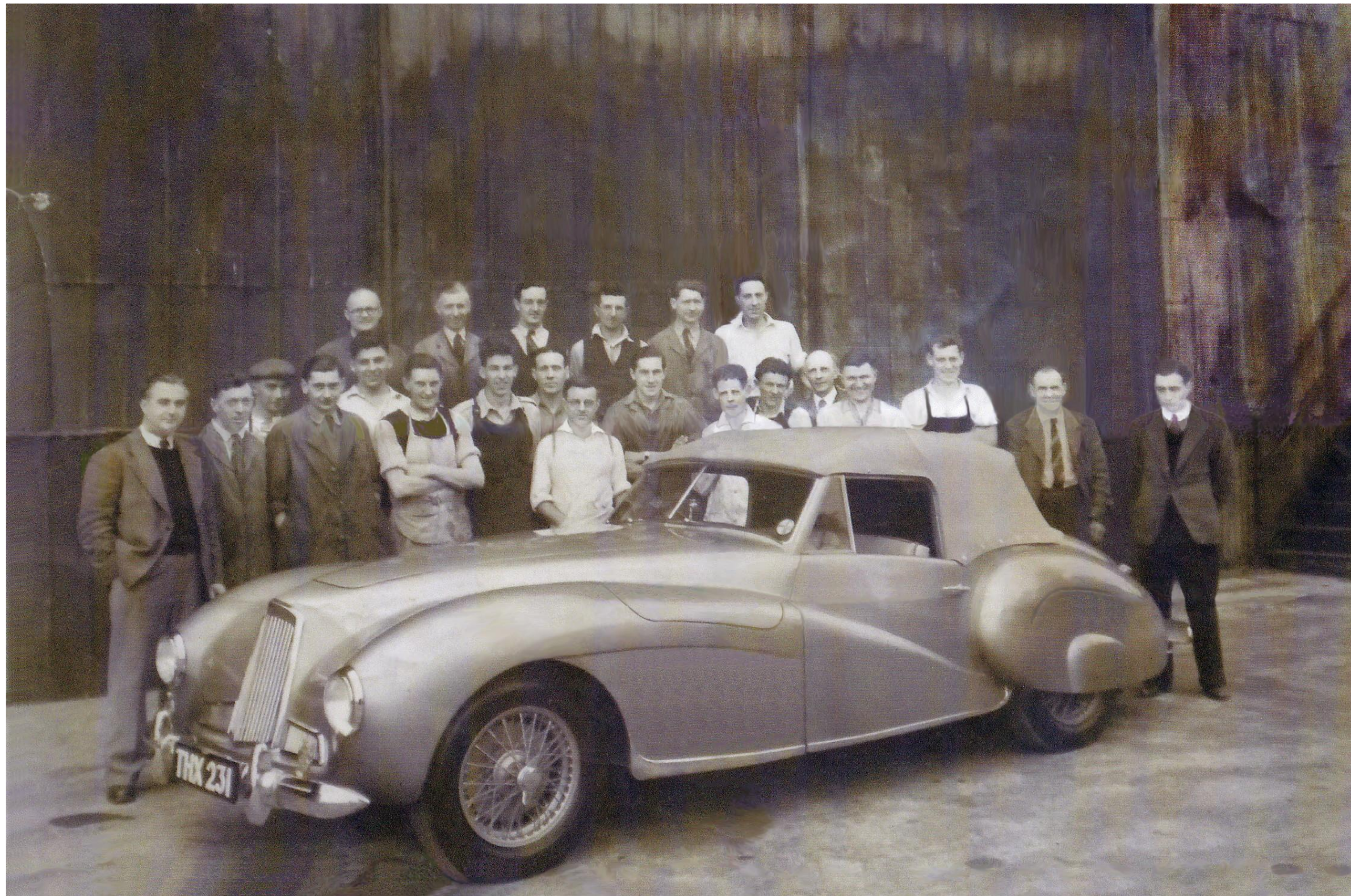
# Businesses

Aston Martin - Encyclopedia Felthamica entry.





# *Businesses*



*Aston Martin*



*Waterloo-Reading Line*



Encyclopedia Felthamica

Architecture

Businesses

People

Natural Features

# People

A.H. Moss - [Encyclopedia Felthamica entry](#).

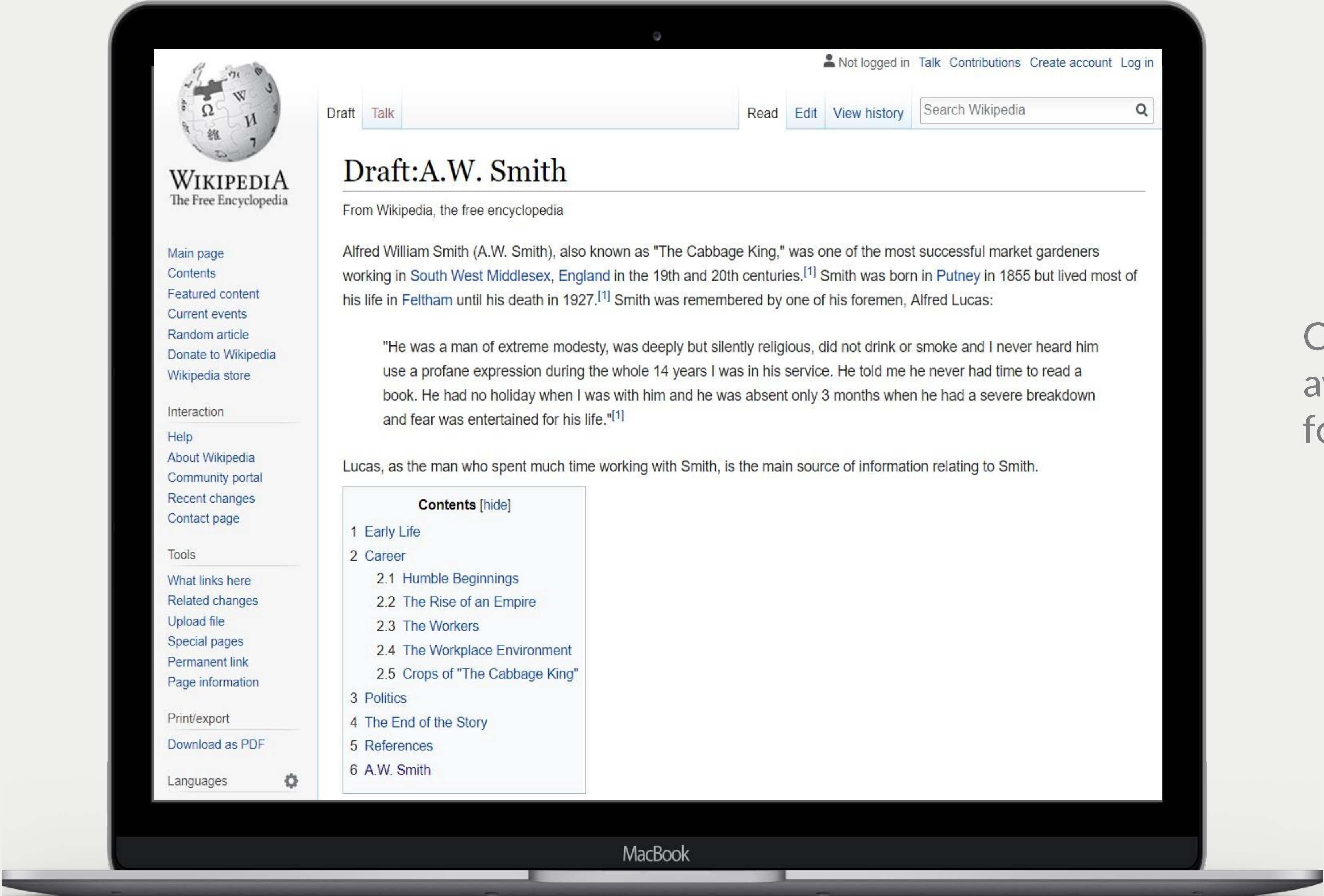
[A.W. Smith](#) (The Cabbage King) - [Encyclopedia Felthamica entry](#).

[Brian May](#) - [Encyclopedia Felthamica entry](#).





# A.W. Smith Wikipedia Preview



Currently  
awaiting review  
for publishing



# People



*Brian May*



*Sir Mo Farah*



*Freddie Mercury*



# Natural Features

Encyclopedia Felthamica

Architecture

Businesses

People

Natural Features

Borrow Pits - [Encyclopedia Felthamica entry](#).

Feltham Arena - [Encyclopedia Felthamica entry](#).





# Natural Features



*Feltham Pond*



*Hanworth Park*



# Feltham Steps Through Time

Feltham Steps Through Time

★

▼

A walking tour around Feltham that highlights some notable sites.

193 views

✓

Locations

▼

📍

Bridge House Pond

📍

St Catherines House

📍

Feltham Green

📍

KTM Rox

... 15 more

☐

Extended Walking Tour

☐

Brief Walking Tour

<https://sites.google.com/view/ourfeltham/walking-tour>

20



# Why Feltham Video



<https://youtu.be/chfXUtFISs>



# THANK YOU!

---

Team Contact Info

Email: LO19.OF@gmail.com

Website: <https://sites.google.com/view/ourfeltham>

Project Center: <https://wp.wpi.edu/london/>



# Acknowledgments

## Joyce Ip

*Project Sponsor Liaison, London Borough of Hounslow*

## Our Interviewees & the Community of Feltham

*For providing your information and wisdom that helped make this project possible*

## Angela Parton

*Friends of Bridge House Pond Vice Chair & Feltham History Group Member*

## Professor Esther Boucher-Yip

*Project Advisor, Professor of Humanities & Arts*

## Professor Fabio Carrera

*Project Advisor, Professor of Interdisciplinary & Global Studies*



# THANK YOU!

---

Team Contact Info

Email: LO19.OF@gmail.com

Website: <https://sites.google.com/view/ourfeltham>

Project Center: <https://wp.wpi.edu/london/>