

Prewrite Instructions for the MathWorks workshop at WiDS@WPI on March 02, 2020

Greetings,

I hope you are well.

You have a workshop from MathWorks (Hands on Deep Learning and IoT) that will be held at your facility (WPI in support of the WiDS Conference) on Monday March 02, 2020 from 1:35pm-2:35pm EST. This message contains instructions for getting setup for this workshop. These same instructions should also provide a preview of the environment and files that you will use for this upcoming workshop.

#### **NOTES**

*\*The links contained in this message were specifically generated for use in regards to this upcoming workshop at your facility.*

*\*Therefore, in order to access most of the content related to this workshop please use the provided links from this message.*

*\*Each potential workshop attendee should get his or her own account from MathWorks. If this causes an issue, please let me know as soon as possible.*

Before we begin please note that, **the supported and recommended browser for using MATLAB Online is Google Chrome.**

#### **The link for the workshop environment**

The following link provides access to the workshop environment which is MATLAB Online:  
<https://tinyurl.com/WS4WiDSWPI>

The steps below will help you and the instructors to get access to the workshop environment.

#### **Step #1:**

Click on the provided link:

<https://tinyurl.com/WS4WiDSWPI>

You will then see a screen shot similar to what is listed below after clicking on the above link.

## Access MATLAB for your Hands-On Workshop

MathWorks is pleased to provide a special license to you as a course participant to use for your Hands-On Workshop. This is a limited license for the duration of your course and is intended to be used only for course work and not for government, research, commercial, or other organization use.

|                      |   |
|----------------------|---|
| <b>Course Name:</b>  | Hands-On Deep Learning Women in Data Science (WIDS) Conference at WPI |
| <b>Organization:</b> | Women in Data Science (WIDS) at WPI                                   |
| <b>Starting:</b>     | 02 Mar 2020   |
| <b>Ending:</b>       | 02 Mar 2020   |

[Access MATLAB Online](#)

and

### Step #2:

After selecting the Access MATLAB Online button, you will typically see this next similar screen shot.

 MathWorks®

MATLAB Online

# MATLAB® Online

Sign in to your MathWorks Account

Email Address or User ID:

Password:

[Forgot Password?](#)

[Sign In](#)

[Create Account](#)

[Learn about MATLAB Online](#)

Use MATLAB Drive™ to synchronize your MATLAB files between your computers and MATLAB Online.

When prompted, please enter your credentials for your MathWorks account.

**If you don't have a MathWorks account yet, you can create one before the event or at the event.**

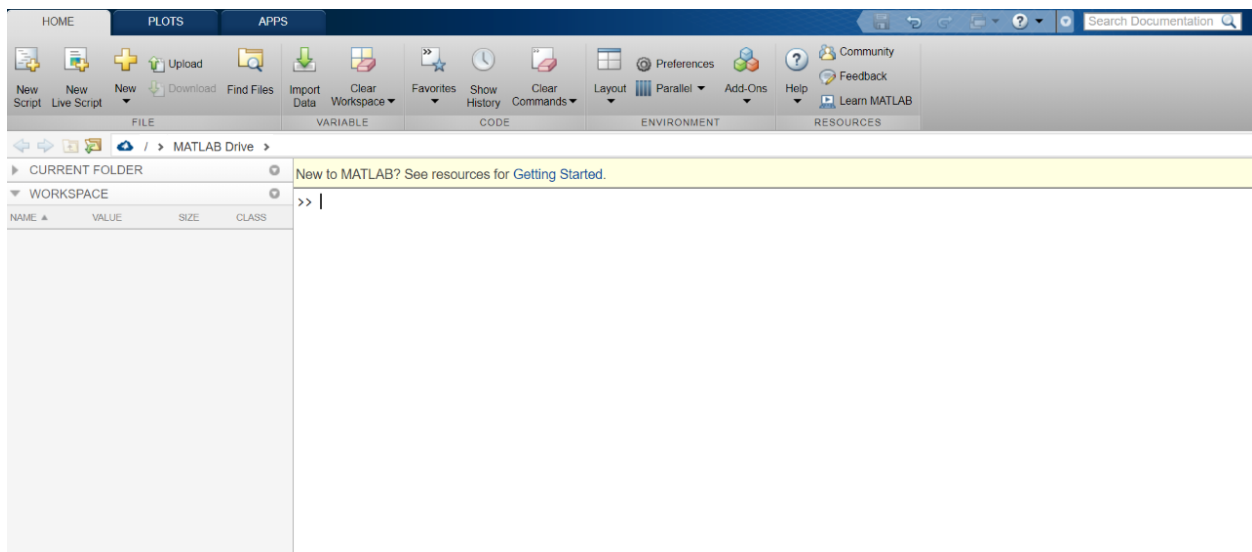
**NOTES:**

- Creating a MathWorks account now will save you time during the hands-on session.
- You will need to access your email to create an account.
- You may need to select an Access MATLAB Online button in order to continue with the login process.

**Step #3:**

Once you log-in with your credentials you will get access to the MATLAB Online environment and your screen in your browser should look similar to the screen capture below.

***When you see a screen similar to the screen capture below that means you have successfully logged into the MATLAB Online environment.***



**Step #4:**

Next we will get access to files that will be used during the upcoming workshop. In order to access these files please visit the following [link](#).

You may see a similar screen shot below after visiting the above link.

# MATLAB Drive

Sign in to your MathWorks Account

Email Address or User ID:

Password:

[Forgot Password?](#)

Sign In

[Create Account](#)

Please login with your credentials to your MathWorks account (if prompted).

Once you log into your account you may have to Accept or Decline the invitation to the Workshop contents under the Pending Invitations.

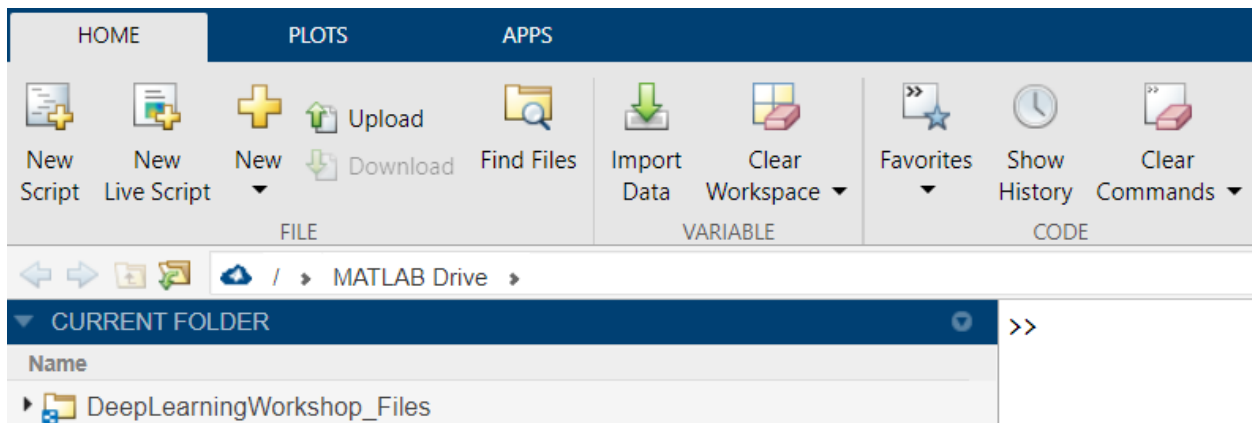
**Please select Accept** and then you should see the contents under the Current Folder window in MATLAB Online.

## Step #5:

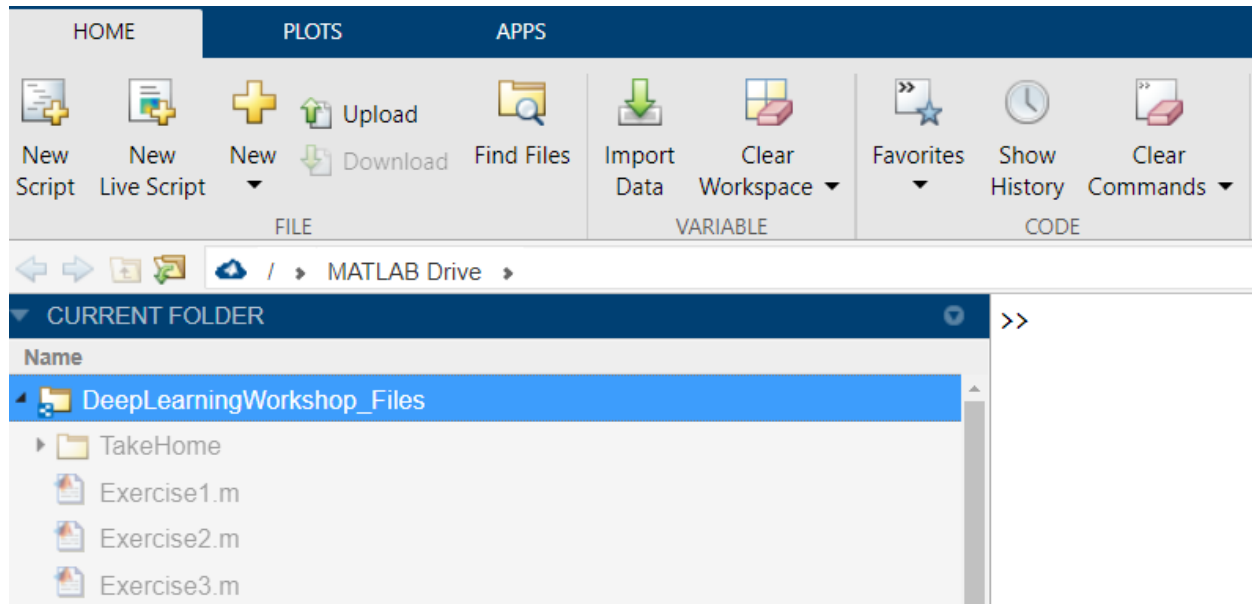
After you logged in with your credentials and received access to MATLAB Online, were you able to see any folders in the Current Folder window?

**If the answer is yes**, did you see any folders with the following names:  
***DeepLearningWorkshop\_Files in the Current Folder window of MATLAB Online?***

**Below is a screen capture of the workshop folders which you should be able to see in the Current Folder window.**



The folder named: **DeepLearningWorkshop\_Files** should contain files and a sub folder, which are listed in the screen shots below.



If you were able to see content similar to the above screen shots and did not run into any issues that means you did the following:

**\*you were able to successfully log into MATLAB Online**

**\*you were able to get access to the files that will be used during this upcoming workshop on March 2<sup>nd</sup>**

The reason the above tests will be helpful is so you can check if you have access to MATLAB Online and to files that will be used during the workshop.

***If there are any questions or concerns about the content in this message, please let me know and directly reply to this email message.***

Thank you for your time and looking forward to meeting you during this workshop on March 02, 2020.

Regards,  
Lou

Louvere Walker-Hannon  
Application Engineer  
Email Address: [lwalker@mathworks.com](mailto:lwalker@mathworks.com)  
Direct Phone Number: 508-647-7830

MathWorks, Inc.  
1 Apple Hill Drive  
Natick, MA 01760  
Phone Number: 508-647-7000  
Fax Number: 508-647-7001