

# WPI Rideshare Hub

Team Name: Demission

Varun Bhat, Max Chen,  
Shano Liang, Mikel Matticoli,



Encouraging demission on our campus

through a centralized rideshare tool

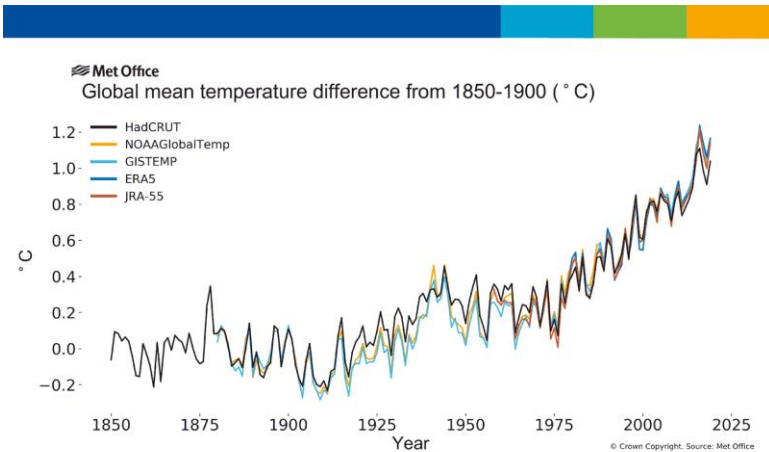
# Objective

Our solution aims to contribute to **environmental sustainability** within the context of the WPI community

We address the parallel issue of sparse/disjointed information on public transport for students in order to make our web app **practical** for WPI students and to **incentivize** its use

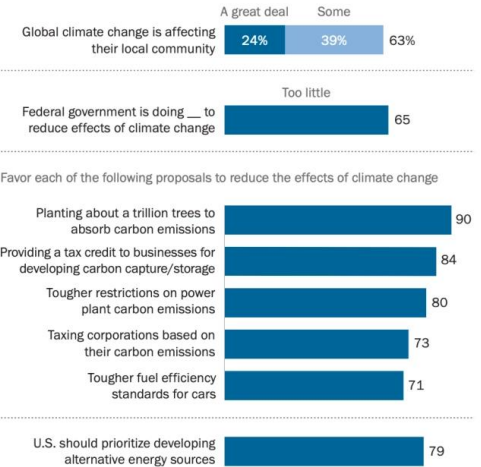
# United Nations' Sustainable Development Goals

## Climate Change is a serious issue



### Americans see too little federal action on climate change, back range of policies to reduce its effects

% of U.S. adults who say ...



Note: Respondents who gave other responses or did not give an answer are not shown. Source: Survey conducted April 29-May 5, 2020.

\*Two-Thirds of Americans Think Government Should Do More on Climate\*

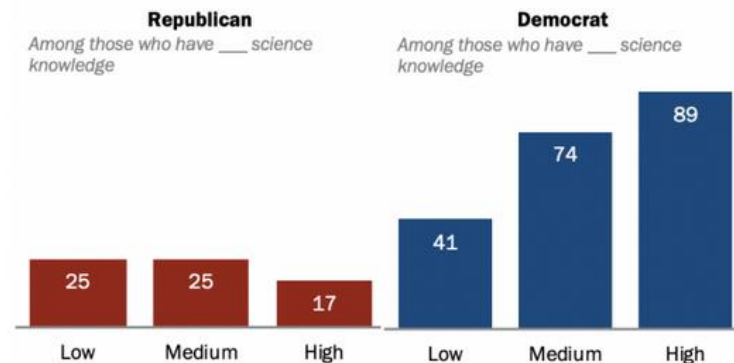
PEW RESEARCH CENTER

# Awareness

Climate Change Awareness is conflicting or incomplete

## Most Democrats with high science knowledge say human activity contributes a great deal to climate change, but there is no parallel among GOP

*% of Republicans or Democrats who say human activity contributes a great deal to global climate change*





Note: Republicans and Democrats include independents and others who lean toward the parties. Respondents who gave other responses or who did not give an answer not shown. Levels of science knowledge based on 11-item index in survey conducted Jan. 7-21, 2019. Source: Survey conducted Oct. 1-13, 2019.


PEW RESEARCH CENTER

# Awareness at WPI


considered. We have heard supporting evidence for new disease vectors or migration decisions. We have also heard optimism for our ability to think a global consciousness! We will continue to add more perspectives as we continue our global conversations.

 WPI Global Lab 


All Iceland India Japan New Zealand




Perceptions of Climate Change in Japan



Climate Change Identities



Investigating Flood and Climate Change Perception



Improving Science Communication in Wellington: An analysis of public knowledge of sea level rise in the Central Business District of Wellington, New Zealand



<https://global-lab.wpi.edu/storying-climate-change/>

DEMO

<https://wpirideshare.ml>

## Why is this necessary?

- While rideshare information exists elsewhere, there is no central resource that links out to all of them
- While carbon emissions calculators are a dime a dozen on the internet, there is no incentive to use them, so the educational value is lost to the general public



Thank you!

[gr-ridesharedemissions@wpi.edu](mailto:gr-ridesharedemissions@wpi.edu)

