

TOUCHTOMORROW 2016 FESTIVAL ZONES

MORGAN DINING HALL

Fuel up! Grab a quick lunch or snacks.

SPORTS AND REC CENTER

Fun for all ages from our exhibitors—NASA, The Discovery Museums, EcoTarium, Big Brothers/Big Sisters, Worcester Historical Museum, and many more.

QUAD

Meet the NASA Sample Return Robot Centennial Challenge teams. Take a selfie in a Mark Suit. Get run over by a robot and much, much more fun for younger scientists.

BARTLETT CENTER

WGBH@TouchTomorrow is here with Curious George, Design Squad Nation, and NOVA.

ALDEN MEMORIAL

See musical robots in action and more from NASA.

HIGGINS LABORATORIES

Learn about assistive technology and how engineers keep things cool in space.

OLIN HALL

Take a virtual tour of the universe.

RUBIN CAMPUS CENTER

Check out the Main Stage programming upstairs (see schedule on back). Make a spaghetti bridge and see a solar house designed by WPI students.

SALISBURY LABS

See how scientists are helping students “grasp” math and watch visualizations of science and technology.

GODDARD HALL

Watch bacteria glow, extract DNA from strawberries, and more science experiments throughout the day.

DISCOVERY ROW

Experience real research projects from autonomous vehicles to humanoid robots and everything in between.

ATWATER KENT LABORATORIES

Explore soft robotics, biomolecules, and more.

FULLER LABORATORIES

Demo and view computer games and view animations designed by students.

WASHBURN SHOPS

See advanced manufacturing tools in action, including a 3D printer.

GATEWAY PARK - 85 PRESCOTT STREET

Explore surgical and humanoid robots at our home base for all things robotics!

GATEWAY PARK - 50 PRESCOTT STREET

Tour the Biomanufacturing Education and Training Center or the Fire Protection Engineering Lab. Sign up is required for each as space is limited.

FULL LIST OF ACTIVITIES AVAILABLE ON THE WEBSITE AND THE APP (SEE REVERSE FOR INSTRUCTIONS ON HOW TO DOWNLOAD THE APP)



#TOUCHTOMORROW



FESTIVAL PROGRAMMING

Events are subject to change. For the latest information, please refer to the TouchTomorrow app or website.

RUBIN CAMPUS CENTER ODEUM STAGE

10:30 AM and 1:30 PM | MAD SCIENCE SHOWINGS

Mad Science presents a spectacular show that will thrill audiences of all ages with impressive science experiments. This interactive show challenges the audience to explore the scientific method as they observe, hypothesize, and experiment. It's not magic, it's SCIENCE!

11:30 AM | PAUL VENTIMIGLIA '12

The man behind the controller of the BattleBot named Bite Force that won ABC's 2015 "BattleBots" competition, WPI alum and winner of NASA's 2009 Regolith (moon dust) Excavation Challenge

12:30 PM | NASA CENTENNIAL CHALLENGE

Prize Money Presentation and Closing Ceremony

2:30 PM | ASTRONAUT CHARLIE PRECOURT

Charlie Precourt, former NASA Chief Astronaut and veteran of four Space Shuttle missions, talks about his experience with space exploration and its influence on his current work developing rocket propulsion systems that will help send American spaceships beyond the moon and even to Mars!

"NASA TALKS" IN SALISBURY LABS, ROOM 105

(presentations will be 20 minutes, followed by 20 minutes of Q&A from the audience)

10:30 AM | SPACE LIFE SUPPORT

Unlike exploring your neighborhood (or other earthly places), space exploration currently requires all resources (air, water, food, shelter) to be taken with you. And the simple acts of brushing your teeth and going to the bathroom are not the same in microgravity. Learn what it's like to live and work in space.

11:30 AM | iSAT

The Iodine satellite (iSat) project objective is to mature and perform a flight demonstration of iodine propulsion. Iodine is unique in that it offers a high-performance, high-density propulsion option that can launch benign and unpressurized. The technology has potential to offer small spacecraft maneuverability and to reduce total life cycle costs of larger class missions.

12:30 PM | IN SPACE MANUFACTURING

The objective of the NASA In-space Manufacturing project is to provide a dramatic paradigm shift in the way manufacturing, logistics and maintenance are addressed during long-duration space exploration missions to destinations such as Mars. This is accomplished by developing real-time manufacturing capabilities that work in microgravity, as well as establishing the required skills and processes that will enable these technologies to become institutionalized. ISM has established a roadmap that focuses on utilizing ground-based and International Space Station (ISS) demonstrations as the proving ground for the evolution of these capabilities from earth-reliant to earth-independent. Currently, there are two 3-D printers on the ISS with an In-space Recycler Demonstration being developed for launch in 2017.

WPI RESEARCH EXHIBITS, TOURS, AND ACTIVITIES SCHEDULED EVENTS

Please note that some activities are scheduled and some will require advanced registration on June 11, as they have limited availability. Download the TouchTomorrow app for more info about each activity.

ALDEN MEMORIAL

Music, Perception and Robotics Lab | Janet Earle Room
Demonstrations continuously
Performances at 11, 1, 2, 3

ATWATER KENT LABORATORIES

3-D Magic of Biomolecules | Newell Hall (Room 116)
Shows at 12, 3

GATEWAY PARK - 50 PRESCOTT STREET

Biomanufacturing Education and Training Center Tour
Second Floor
Sign-up required (in the lobby). Space limited to 10.
Starting at 11, 12, 1, 2, 3

Fire Protection Engineering Lab Tour | First Floor

Sign up required (in the lobby). Space limited to 25.
Starting at 11, 11:30, 12, 12:30, 1, 1:30, 2, 2:30, 3, 3:30

GODDARD HALL

Experience Biochemistry: Glowing Reactions
Room 104
45-minute interactive lab activity.
Sign-up required, space limited.
Offered at 11, 12, 1, 2, 3

Experience Chemistry: Build a Raspberry-flavored

Solar Cell | Room 110
45-minute interactive lab activity.
Sign-up required, space limited.
Offered at 11, 12, 1, 2, 3

HIGGINS LABORATORIES

Keeping Things Cool in Space | Room 248
Tours every hour on the hour. Space is limited.

OLIN HALL

A Virtual Tour of the Universe | Room 107
40-minute presentation
Shows for all ages at 10, 1, 3 / Shows geared to younger ages at 11, 2

WASHBURN SHOPS

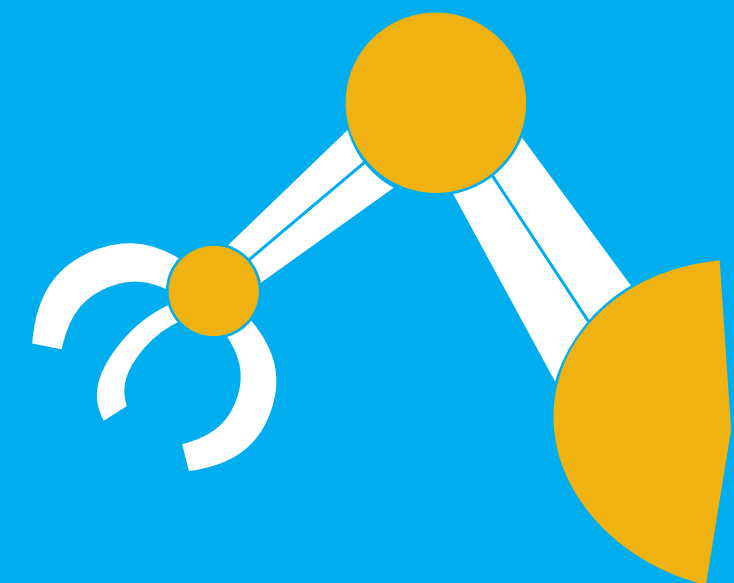
Living in Our Materials World | Room 113
Demos offered at 10:30, 11, 11:30, 12

DOWNLOAD THE TOUCHTOMORROW APP!

Get detailed information about exhibits and activities, create your schedule, navigate the campus, and more. Search "TouchTomorrow" in the app store.



 Connect to the WPI network "TouchTomorrow"



THANK YOU TO OUR PARTNERS AND EXHIBITORS

