

# Emergency and Floor Plan



Developed by P. Kawatkar, N. Morris, M. Perry, and J. Potter, in association with Worcester Polytechnic Institute and Glenny Alvarez of La Conde and Parceleras AfroCaribeñas

\

Last Updated May 1 2024

Advisors: Scott Jiusto and Grant Burrier

## **Resources**

**For more information: Additional project resources and files can be found at the following project website link:**

<https://wp.wpi.edu/puertorico/projects/mar-apr-2024/conde/>

**Acknowledgements: Special Thanks to La Conde, a community run organization working to re-establish the Carlos Conde Marin School as a community center, Glenny Alvarez Trinidad, Dolly Santiago and Dolly Denisse for their valuable time and efforts in supporting this project.**

**This work was produced by undergraduate students in the Worcester Polytechnic Institute (WPI) Global Projects Program. For more information:**

<http://www.wpi.edu/academics/ugradstudies/project-learning.html>

**What is this document?** - Inside this binder is an emergency plan that contains exit routes as well as locations of important emergency preparedness resources.

**Why was it produced?** - This document is for La Conde to use in the event of an emergency as well as use the floor plans to help envision the future of the property

**Who is it for?** - This document is for the use of La Conde and any other outside contractors that may need the floor plans to continue renovations

**How can people use it?** - This binder will be kept in the kitchen/activities building

Última actualización 1 de Mayo de 2024

Asesores: Scott Justo y Grant Burrier

## **Recursos**

Para más información: Enlace al sitio web del proyecto **AQUÍ**

**Agradecimientos:** Un agradecimiento especial a La Conde, una organización comunitaria que trabaja para restablecer la Escuela Carlos Conde Marín como un centro comunitario, Glenny Alvarez Trinidad, Dolly Santiago y Dolly Denisse por su valioso tiempo y esfuerzos para apoyar este proyecto.

**Este trabajo fue producido por estudiantes universitarios del Programa de Proyectos Globales del Instituto Politécnico de Worcester (WPI). Para más información:**  
<http://www.wpi.edu/academics/ugradstudies/project-learning.html>

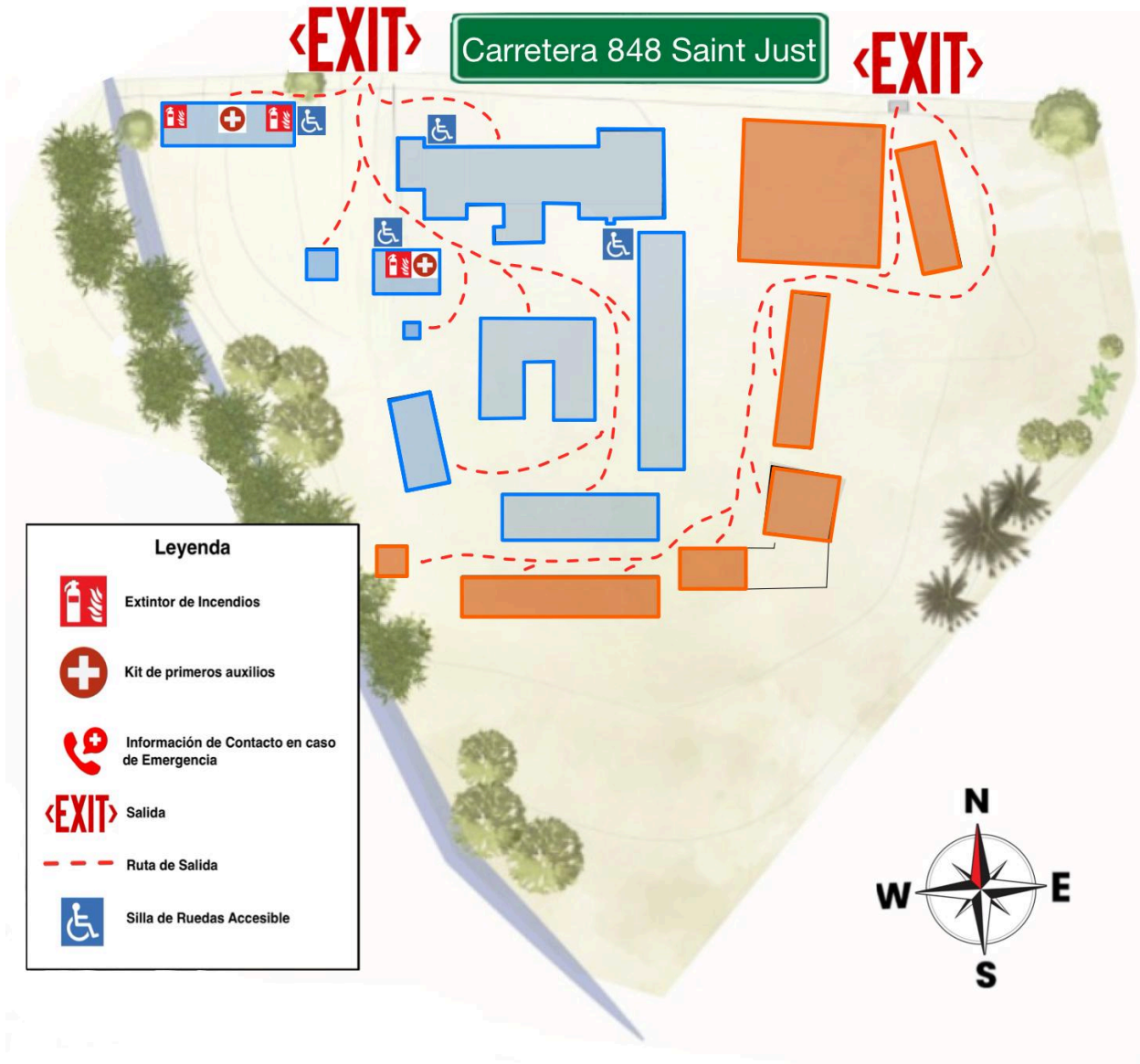
**¿Qué es este documento?** - Dentro de esta carpeta hay un plan de emergencia que contiene rutas de salida, así como ubicaciones de importantes recursos de preparación para emergencias.

**¿Por qué se produjo?** - Este documento es para que La Conde lo use en caso de una emergencia, así como para usar los planos de planta para ayudar a visualizar el futuro de la propiedad.

**¿Para quién?** - Este documento es para uso de La Conde y cualquier otro contratista externo que pueda necesitar los planos de planta para continuar con las renovaciones.

**¿Cómo puede la gente usarlo?** - Esta carpeta se guardará en la cocina/edificio de actividades.

# Proyecto La Conde / Plan de escape de emergencia



## Leyenda



**Extintor de Incendios**



**Kit de primeros auxilios**



**Información de Contacto en caso de Emergencia**



**Salida**



**Ruta de Salida**



**Silla de Ruedas Accesible**

# Legend



**Fire Extinguisher**



**First Aid Kit**



**Emergency Contact Information**

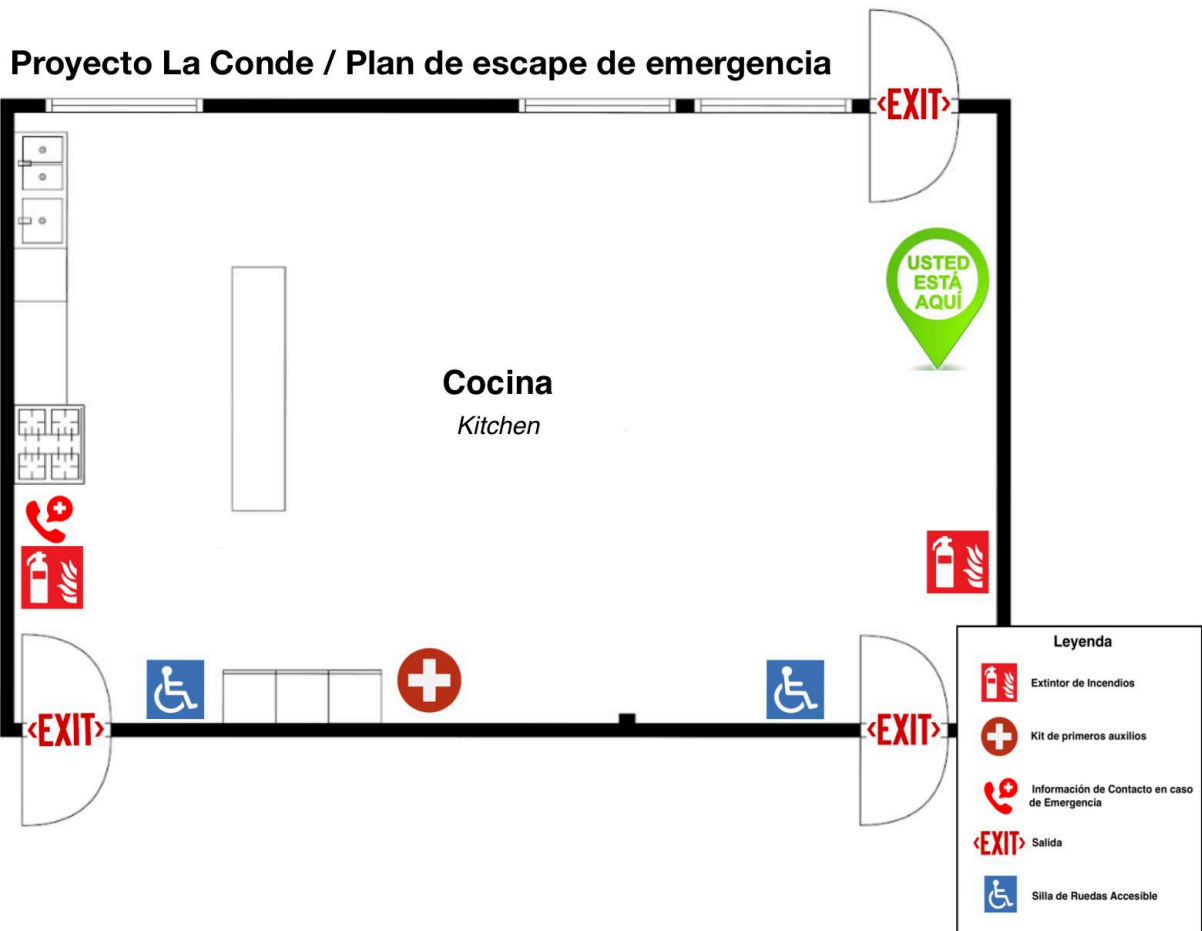


**Exit**



**Exit Route**

# Plan de Escape Edificio 1: La Cocina



# Plan de Escape Edificio 1: Sala de Actividades

Proyecto La Conde / Plan de escape de emergencia



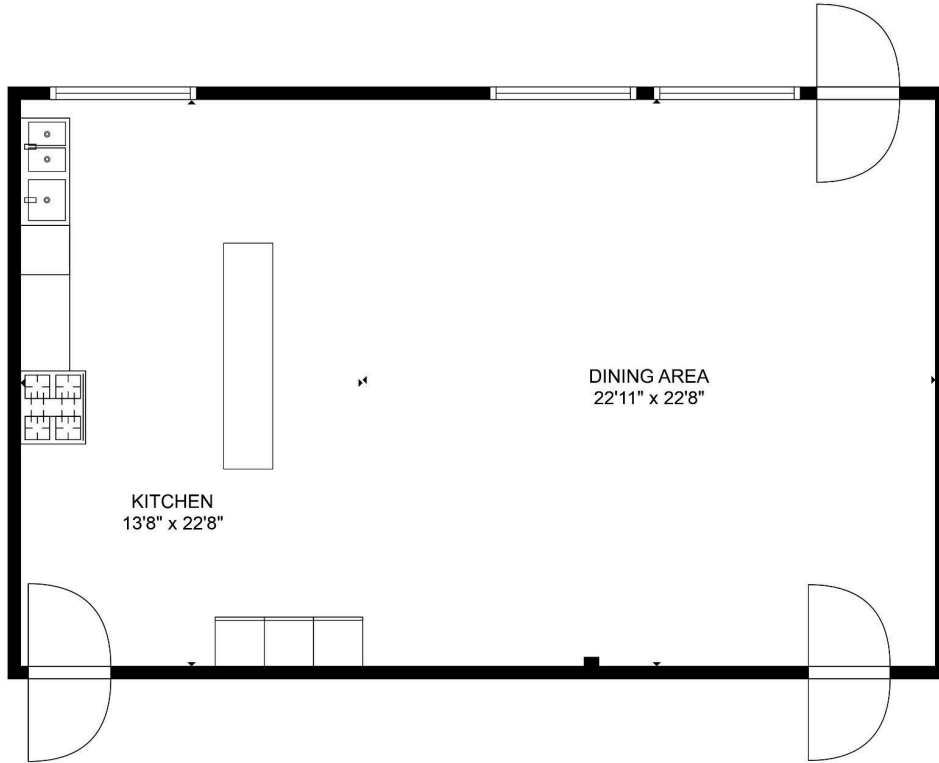


# Plan de Escape Edificio 2:

## Proyecto La Conde / Plan de escape de emergencia



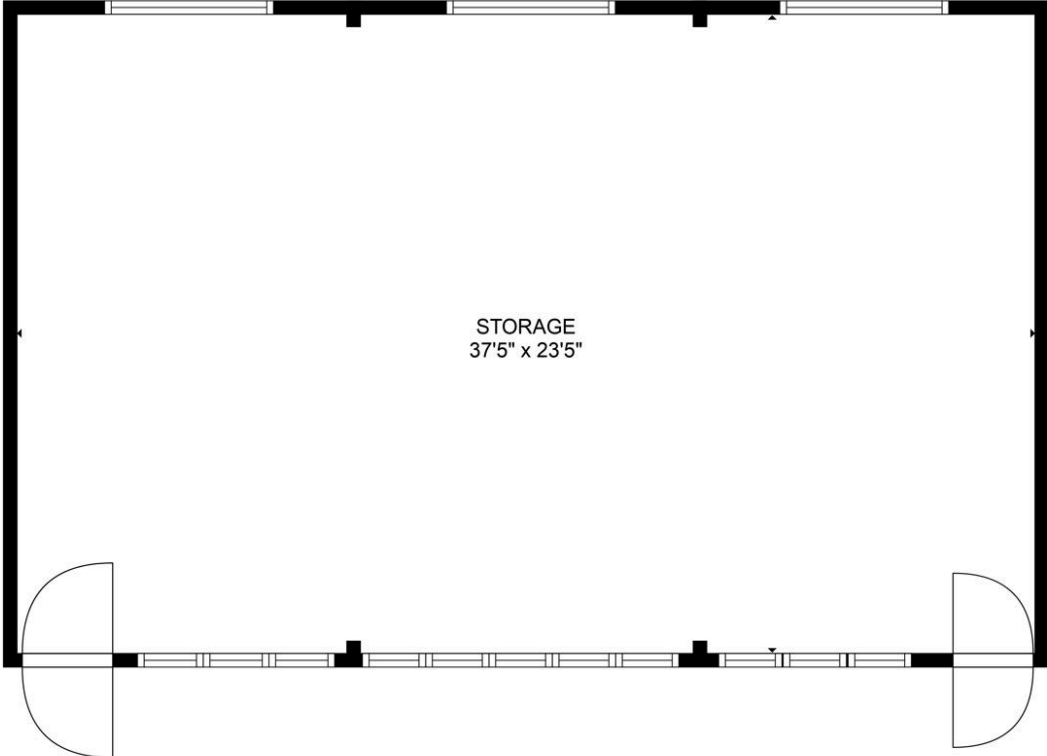
# Edificio 1: La Cocina



**TOTAL: 831 sq. ft**  
FLOOR 1: 831 sq. ft

MEASUREMENTS ARE CALCULATED BY CUBICASA TECHNOLOGY. DEEMED HIGHLY RELIABLE BUT NOT GUARANTEED.

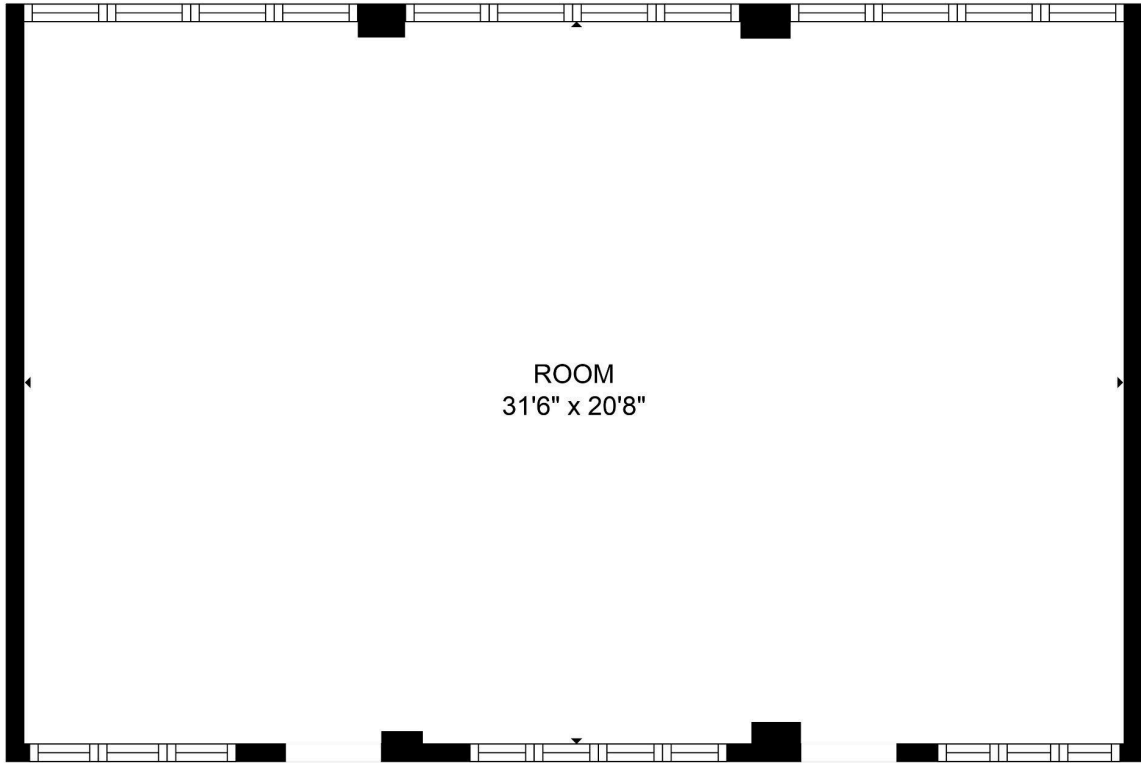
# Edificio 1: Sala de Actividades



**TOTAL: 0 sq. ft**  
FLOOR 1: 0 sq. ft  
EXCLUDED AREAS: STORAGE: 878 sq. ft

MEASUREMENTS ARE CALCULATED BY CUBICASA TECHNOLOGY. DEEMED HIGHLY RELIABLE BUT NOT GUARANTEED.

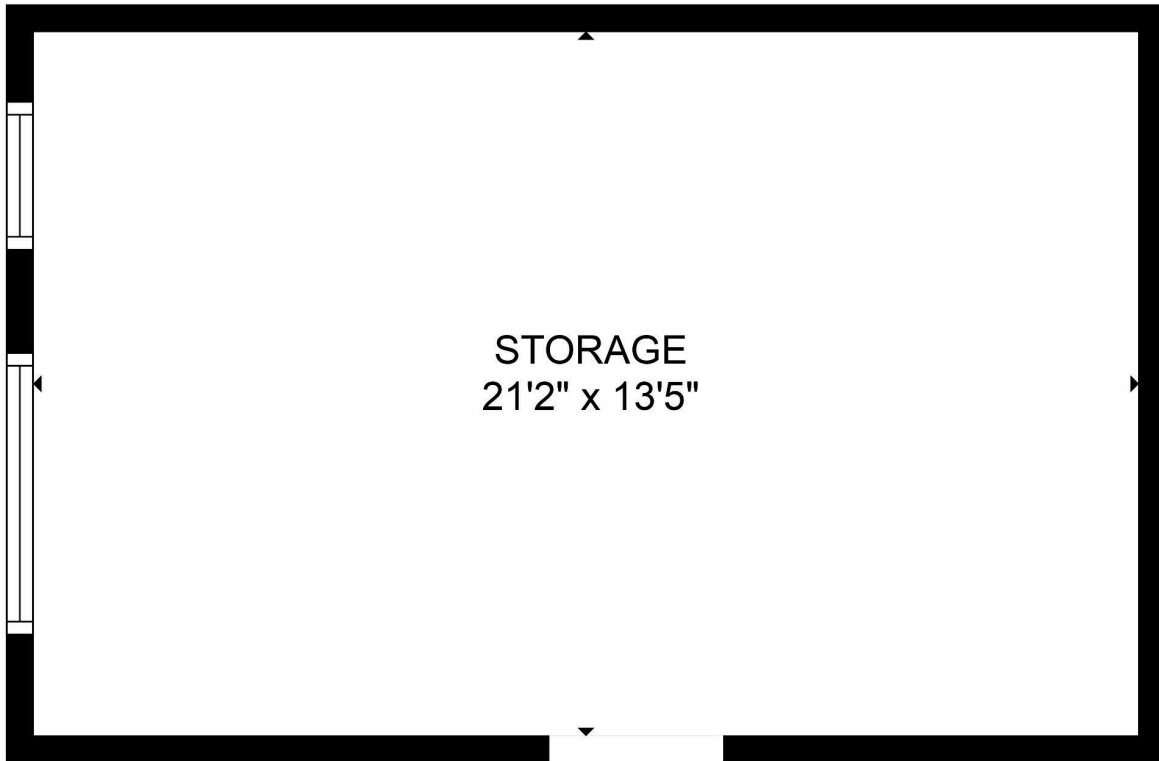
# Edificio 2: Oasis Energetico



**TOTAL: 0 sq. ft**  
FLOOR 1: 0 sq. ft  
EXCLUDED AREAS: ROOM: 653 sq. ft

MEASUREMENTS ARE CALCULATED BY CUBICASA TECHNOLOGY, DEEMED HIGHLY RELIABLE BUT NOT GUARANTEED.

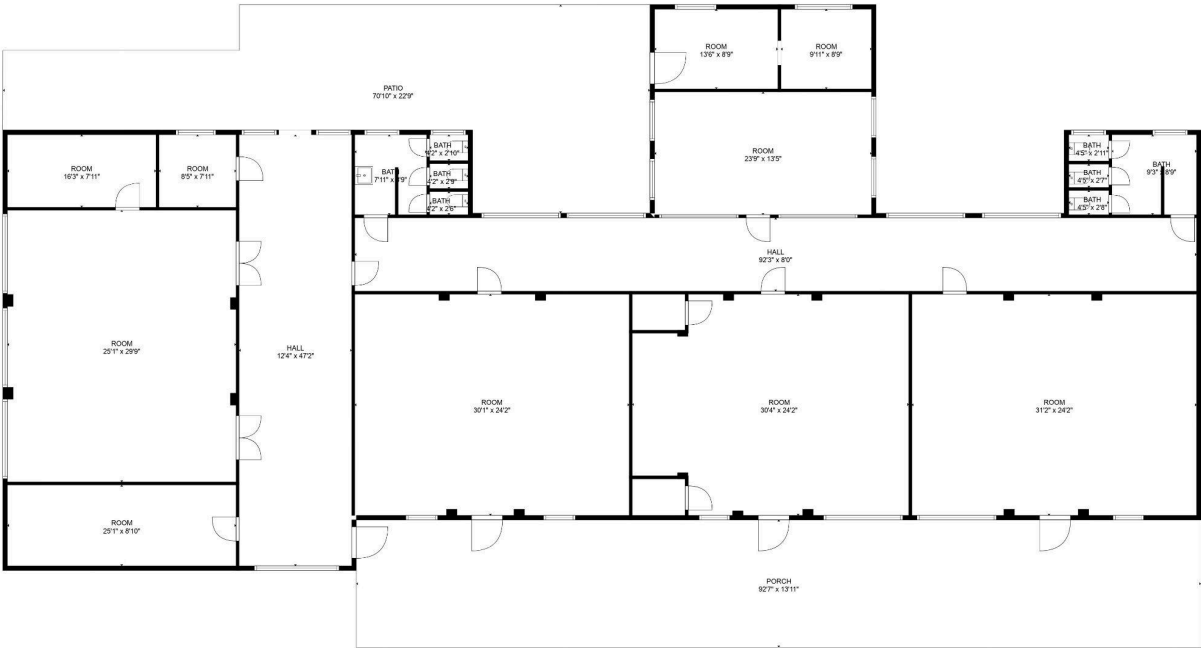
# Edificio 3: Almacenamiento



TOTAL: 0 sq. ft  
FLOOR 1: 0 sq. ft  
EXCLUDED AREAS: STORAGE: 284 sq. ft

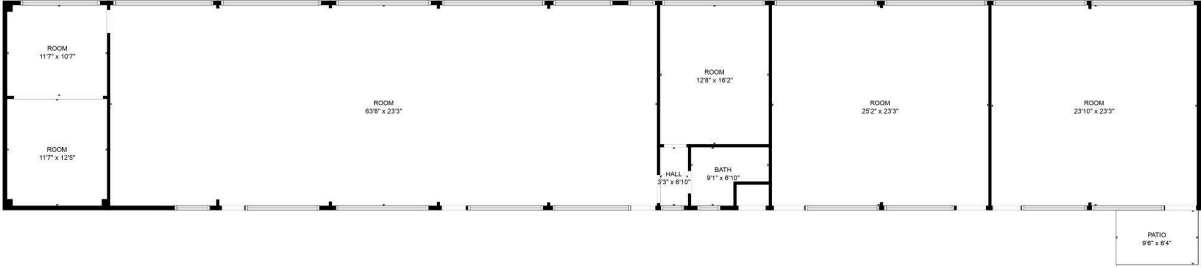
MEASUREMENTS ARE CALCULATED BY CUBICASA TECHNOLOGY. DEEMED HIGHLY RELIABLE BUT NOT GUARANTEED.

# Edificio 3:



**TOTAL: 194 sq. ft**  
FLOOR 1: 194 sq. ft  
EXCLUDED AREAS: HALL: 1397 sq. ft, ROOM: 3812 sq. ft, UNDEFINED: 46 sq. ft,  
BATH: 133 sq. ft, PATIO: 1022 sq. ft, PORCH: 1292 sq. ft  
MEASUREMENTS ARE CALCULATED BY CUBICASA TECHNOLOGY. DEEMED HIGHLY RELIABLE BUT NOT GUARANTEED.

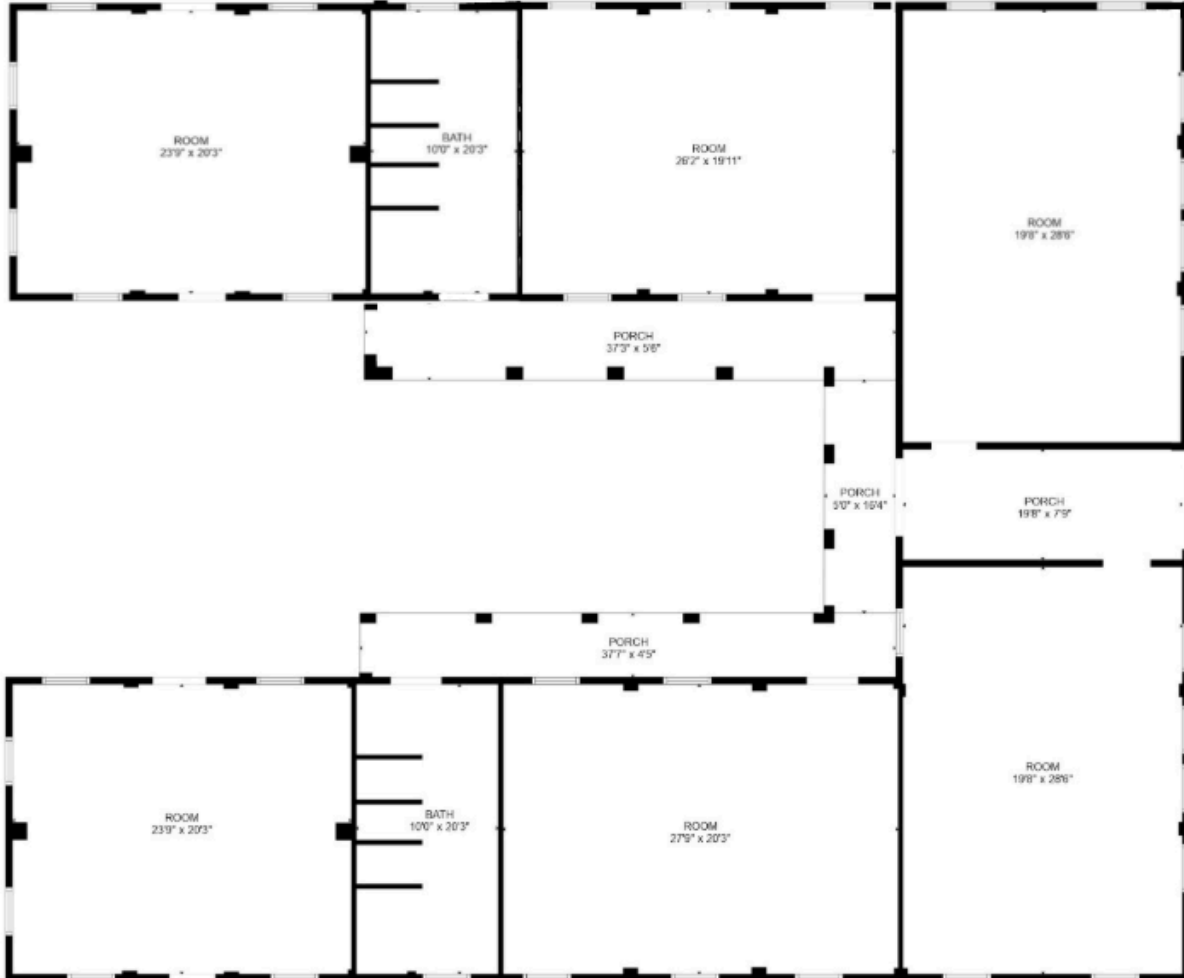
# Edificio 4:



**TOTAL: 0 sq. ft**  
FLOOR 1: 0 sq. ft  
EXCLUDED AREAS: BATH: 57 sq. ft, ROOM: 3124 sq. ft, HALL: 22 sq. ft,  
PATIO: 60 sq. ft, UNDEFINED: 9 sq. ft

MEASUREMENTS ARE CALCULATED BY CUBICASA TECHNOLOGY. DEEMED HIGHLY RELIABLE BUT NOT GUARANTEED.

# Edificio 5:

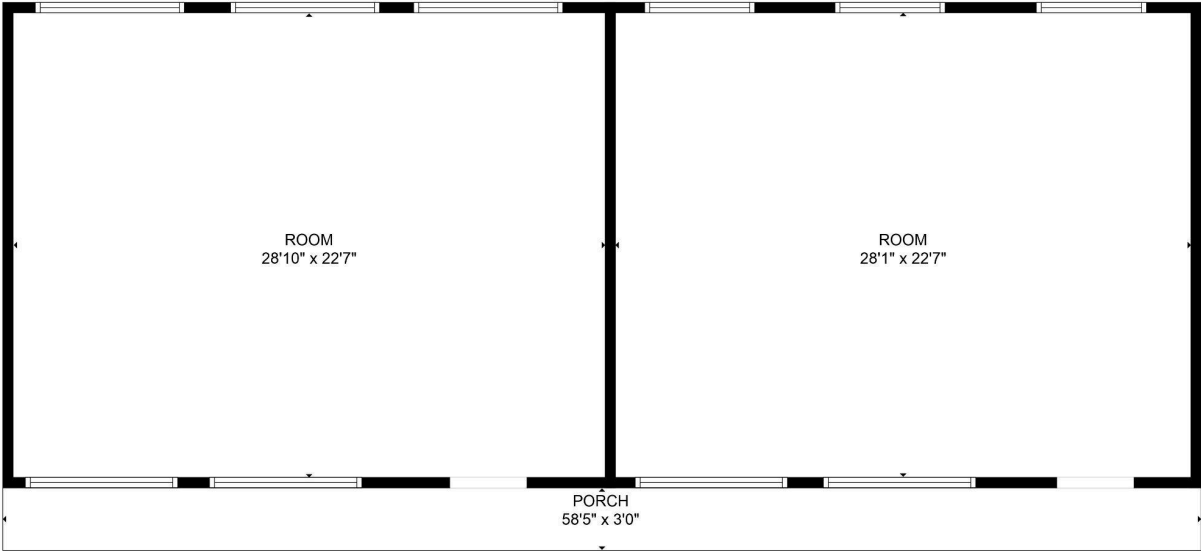


**TOTAL: 0 sq. ft**  
FLOOR 1: 0 sq. ft  
EXCLUDED AREAS: ROOM: 2146 sq. ft, PORCH: 607 sq. ft, BATH: 202 sq. ft

MEASUREMENTS ARE CALCULATED BY CUBICASA TECHNOLOGY, DEEMED HIGHLY RELIABLE BUT NOT GUARANTEED.

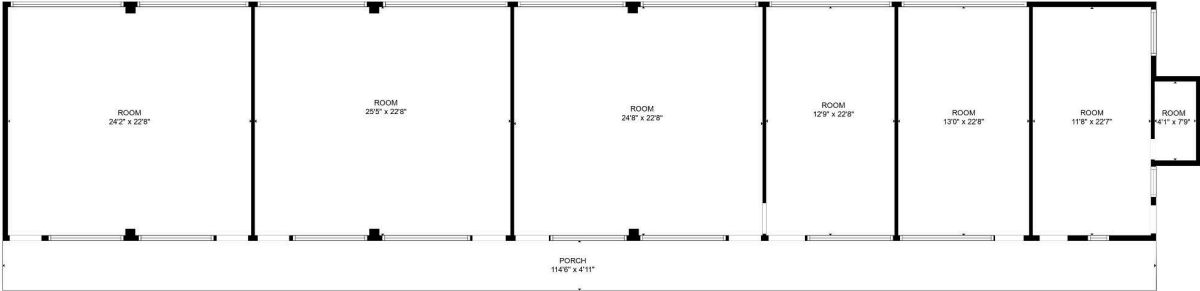


# Edificio 6:



**TOTAL: 0 sq. ft**  
FLOOR 1: 0 sq. ft  
EXCLUDED AREAS: ROOM: 1299 sq. ft, PORCH: 179 sq. ft  
MEASUREMENTS ARE CALCULATED BY CUBICASA TECHNOLOGY. DEEMED HIGHLY RELIABLE BUT NOT GUARANTEED.

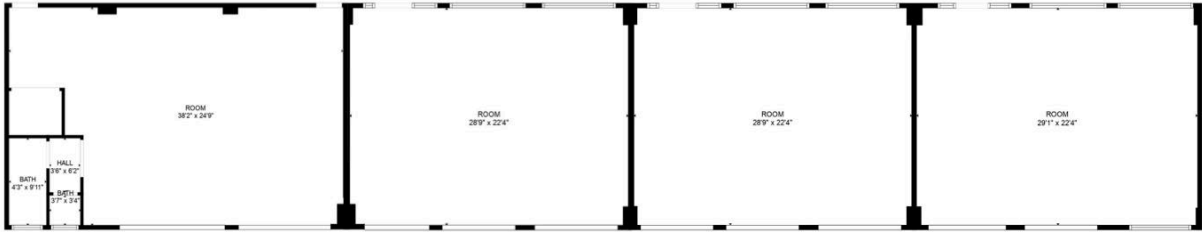
# Edificio 7:



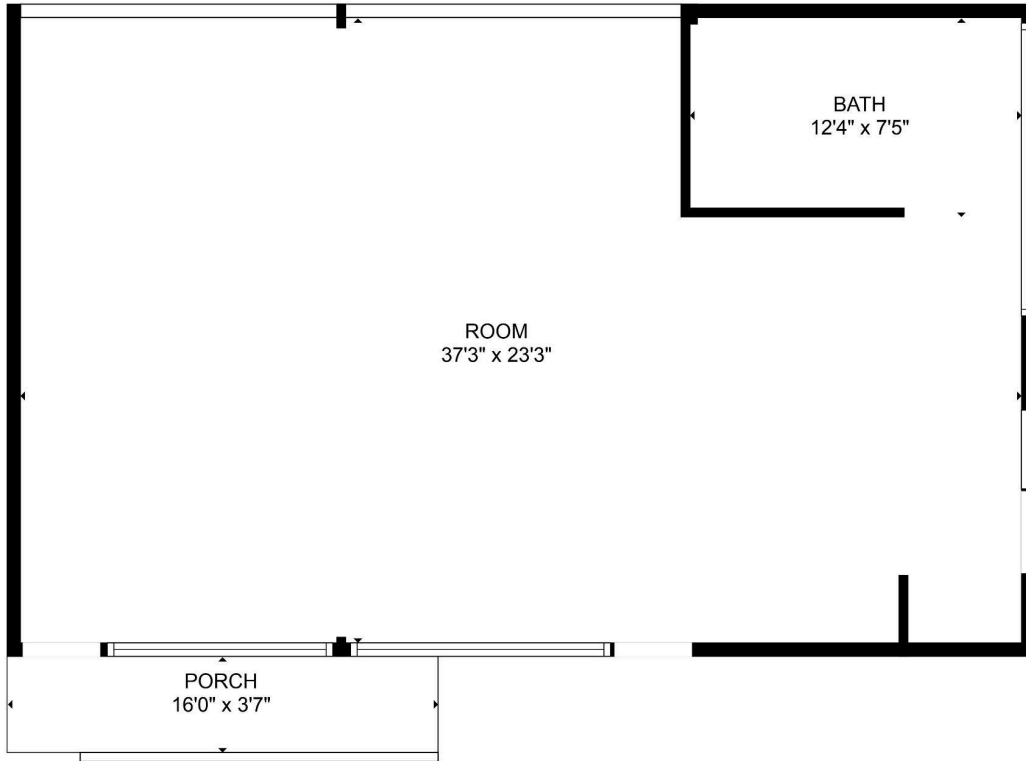
**TOTAL: 35 sq. ft**  
FLOOR 1: 35 sq. ft  
EXCLUDED AREAS: ROOM: 2573 sq. ft, PORCH: 568 sq. ft

MEASUREMENTS ARE CALCULATED BY CUBICASA TECHNOLOGY. DEEMED HIGHLY RELIABLE BUT NOT GUARANTEED.

# Edificio 8:

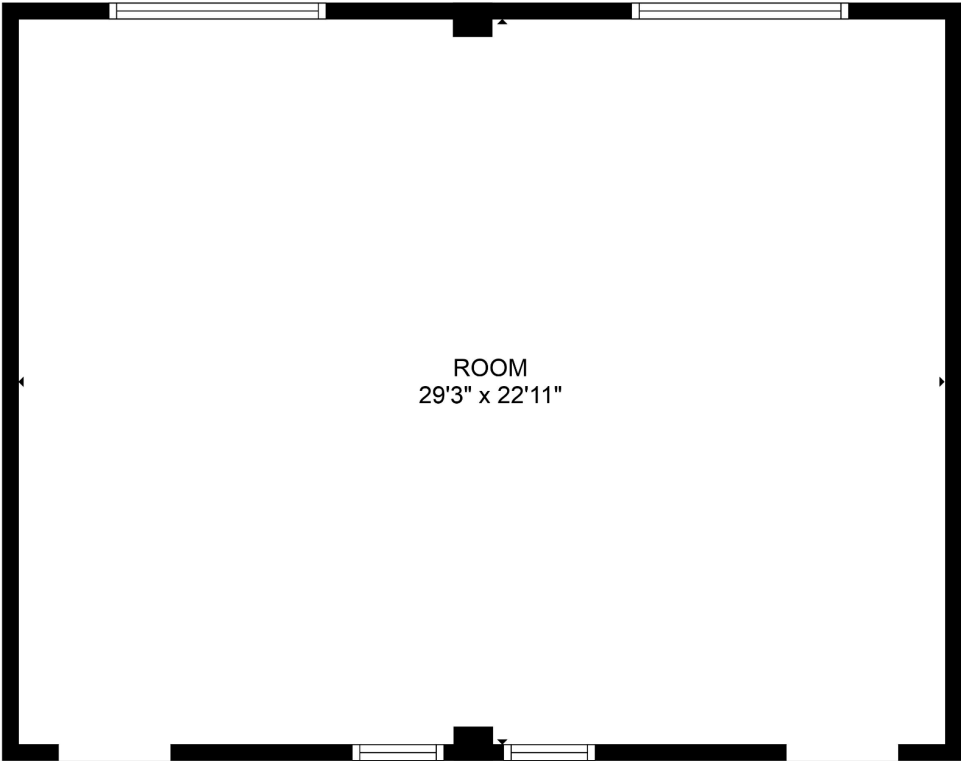


# Edificio 9:



**TOTAL: 0 sq. ft**  
FLOOR 1: 0 sq. ft  
EXCLUDED AREAS: PORCH: 57 sq. ft, BATH: 94 sq. ft, ROOM: 773 sq. ft  
MEASUREMENTS ARE CALCULATED BY CUBICASA TECHNOLOGY. DEEMED HIGHLY RELIABLE BUT NOT GUARANTEED.

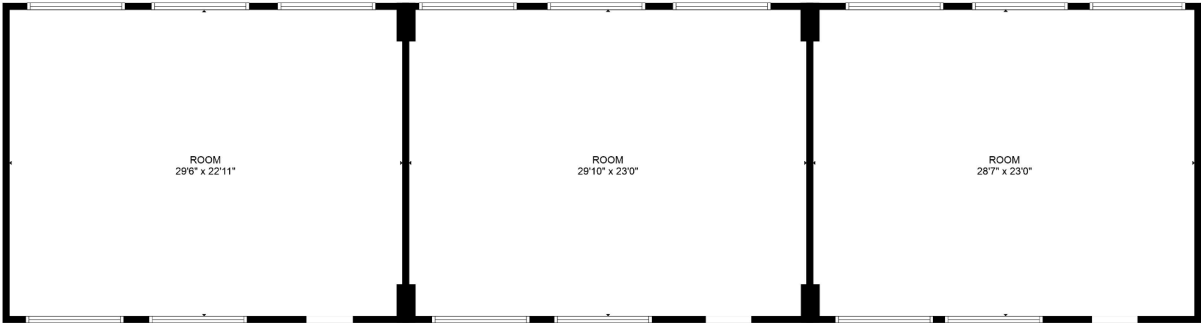
# Edificio 9:



TOTAL: 0 sq. ft  
FLOOR 1: 0 sq. ft  
EXCLUDED AREAS: ROOM: 671 sq. ft

MEASUREMENTS ARE CALCULATED BY CUBICASA TECHNOLOGY. DEEMED HIGHLY RELIABLE BUT NOT GUARANTEED.

# Edificio 10:



**TOTAL: 668 sq. ft**  
FLOOR 1: 668 sq. ft  
EXCLUDED AREAS: ROOM: 1373 sq. ft

MEASUREMENTS ARE CALCULATED BY CUBICASA TECHNOLOGY, DEEMED HIGHLY RELIABLE BUT NOT GUARANTEED.

# Edificio 11:



TOTAL: 0 sq. ft  
FLOOR 1: 0 sq. ft  
EXCLUDED AREAS: ROOM: 1403 sq. ft

MEASUREMENTS ARE CALCULATED BY CUBICASA TECHNOLOGY, DEEMED HIGHLY RELIABLE BUT NOT GUARANTEED.