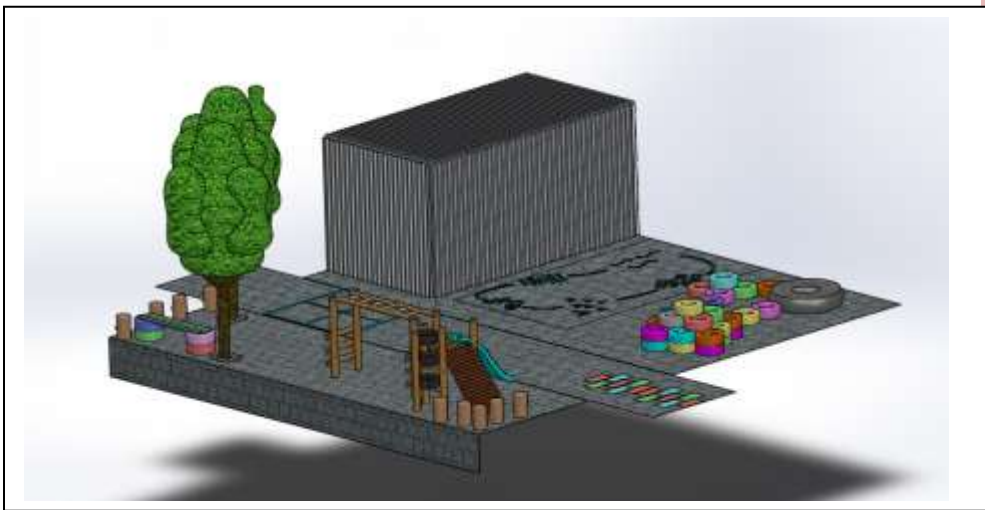




Design and BOQ of Flamingo Crescent Recreational Area



Justin Brousseau, Jacquelyne DiTroia, Malina
Ibelle, Andres Monterroso, and Kristin Olson

December 17th, 2014

Abstract: This brief document compiles all of the Recreational Space designs, Bill of Quantities, and additional items that went into constructing the features in the space. This design was shown to the community and discussed with the kids and community members in order to determine the best possible realistic design. The items in this document can be used to understand all of the planning components that went into the completion of this space.

Authors: Justin Brousseau, Jacquelyne DiTroia, Malina Ibelle, Andres Monterroso, and Kristin Olson

WPI Project Advisors: Scott Jiusto and Stephen McCauley

Series Editor: Scott Jiusto

Project Partners: Flamingo Crescent Community, Center of Early Childhood Development (CECD), City of Cape Town, Community Organization Resource Center (CORC), and Informal Settlement Network (ISN)

Project Website: For much more on the project from which this report derives, please see <http://wp.wpi.edu/capetown/projects/p2014/flamingo/>

CTPC Publication Date: December 2014

About the WPI CTPC Community Resources Series

Community Resources publications are designed to assist residents, community-based and non-profit organizations, local government, students, educators and others working toward sustainable community development in disadvantaged communities in South Africa and elsewhere.

Documents may be downloaded at <http://wp.wpi.edu/capetown/resource-library/>. If you have inquiries or would like permission to reproduce, republish, or substantially adapt the content of this document for other non-profit purposes, please contact us at ctpc@wpi.edu.

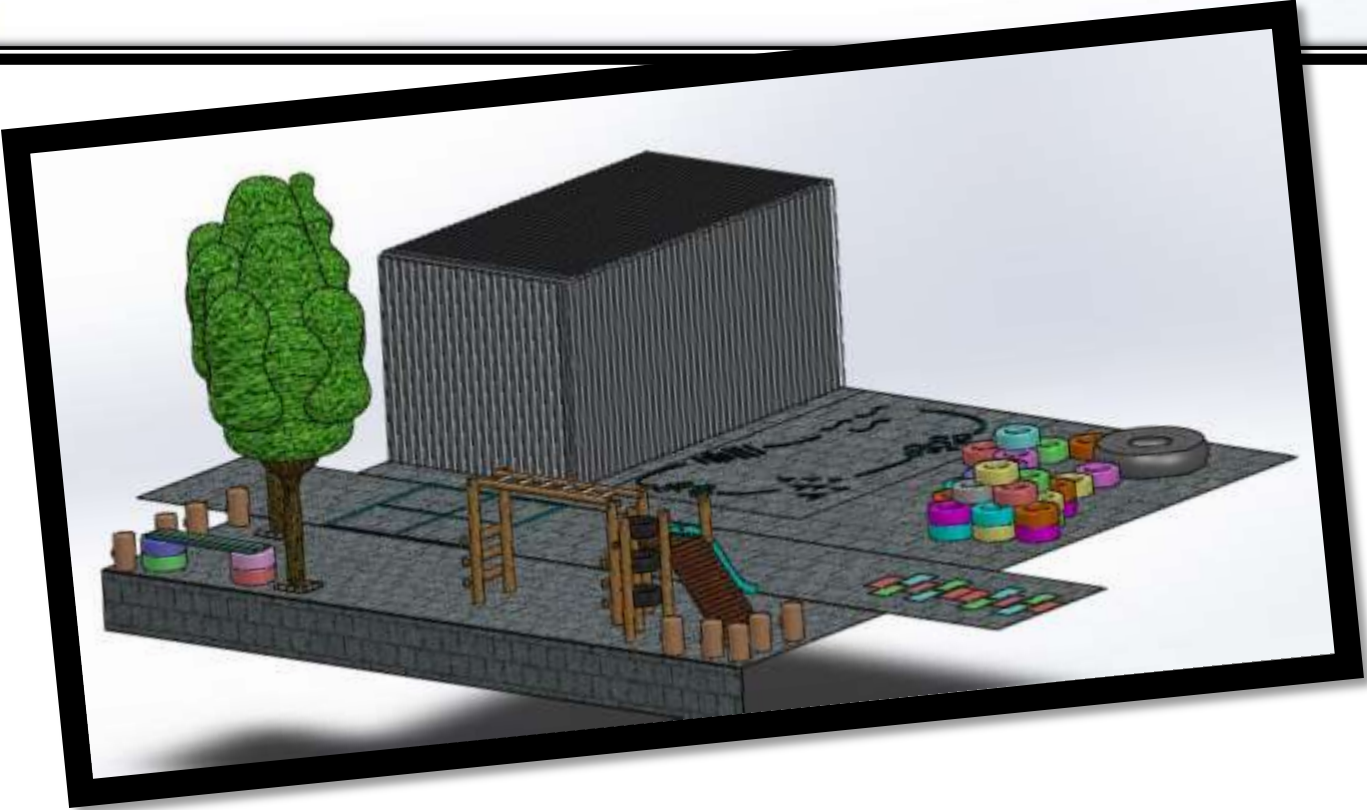
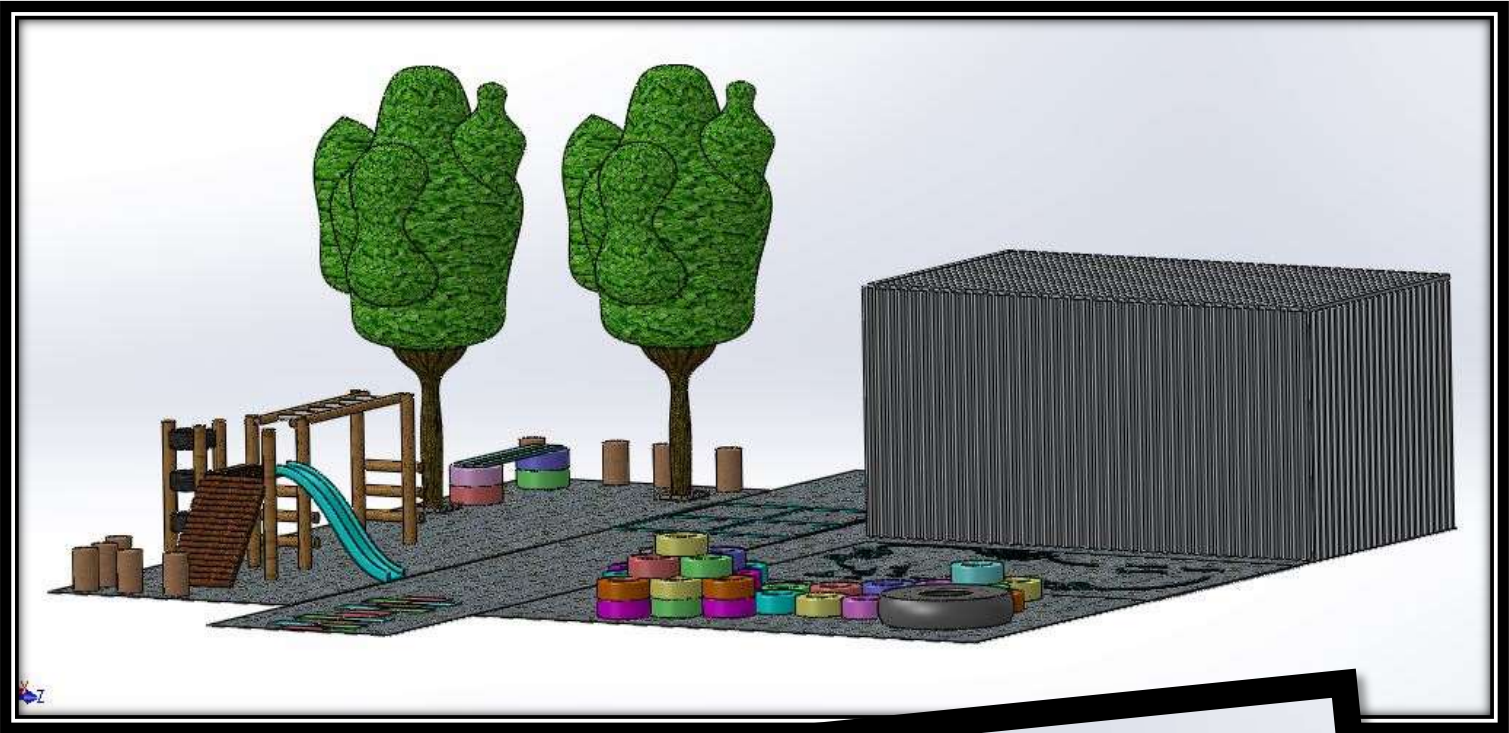
The Cape Town Project Centre (CPTC) is part of the Worcester Polytechnic Institute (WPI) Global Projects Program offering WPI students project opportunities in two dozen centers around the world. Each year, about 26 CTPC third-year undergraduate students from our US university work closely in small groups with local Cape Town organizations and communities on issues posed by our local partners. This report is one of a number of project outcomes produced during two months of fieldwork in Cape Town. See the CTPC website for more information: <http://wp.wpi.edu/capetown>.

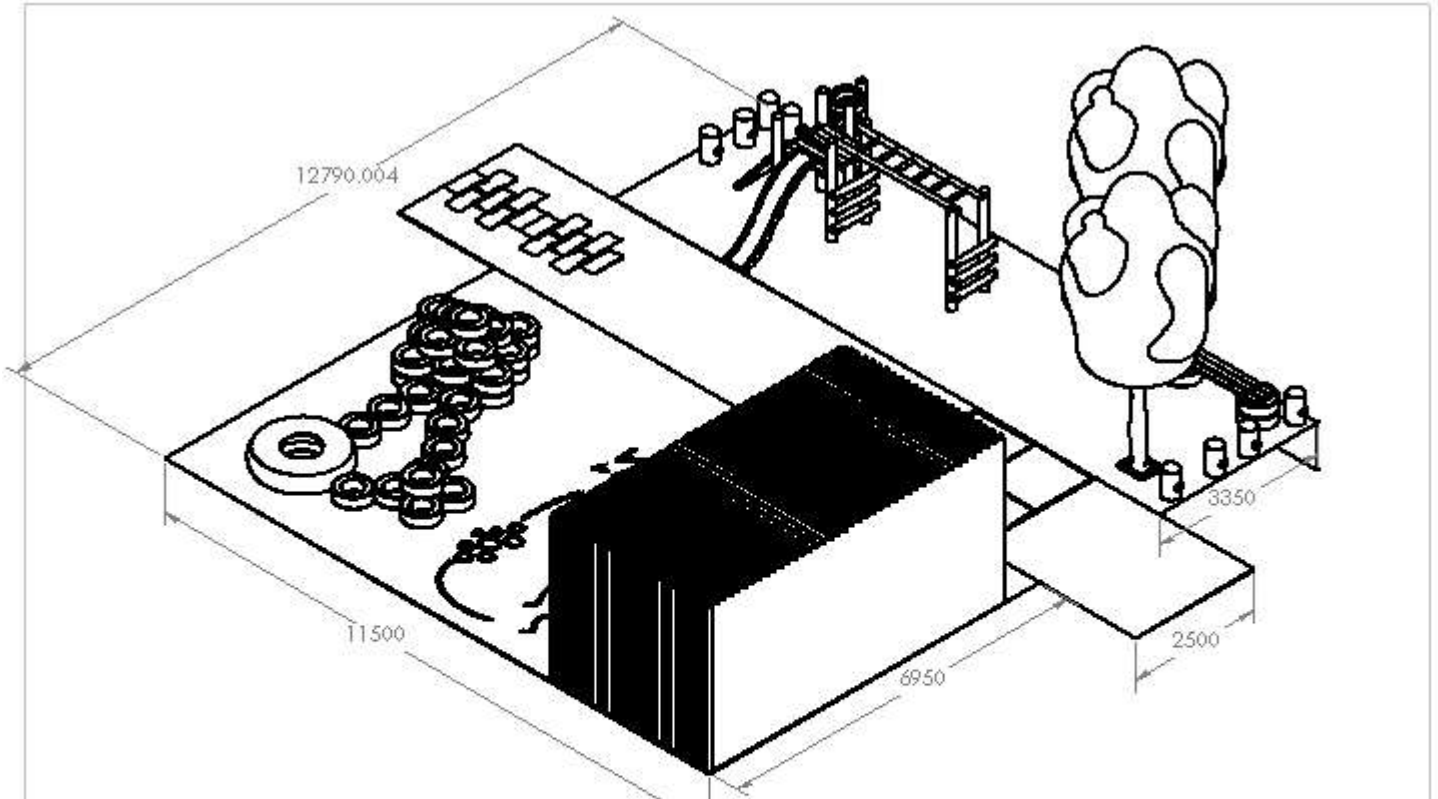
Copyright © WPI 2014

List of Contents:

- CAD Design and Breakdown of Recreational Space
- Recreational Space Bill of Quantities
- Computer Drawing of PlayVentures Play Structure

Design of Flamingo Crescent Recreational Area





PROPRIETARY AND CONFIDENTIAL
 THE INFORMATION CONTAINED IN THIS
 DRAWING IS THE SOLE PROPERTY OF
 GUNTER COMPANY NAME HERE. ANY
 REPRODUCTION IN PART OR AS A WHOLE
 WITHOUT THE WRITTEN PERMISSION OF
 GUNTER COMPANY NAME HERE IS
 PROHIBITED.

		UNITS: DIMENSIONS SPECIFIED:	NAME	DATE			
		DIMENSIONS ARE IN INCHES	DRAWN		TITLE: <h2 style="text-align: center;">Playground</h2>		
		FOR FINISHES:	CHECKED				
		FRAC DECIMAL: 1/16	ENG APPR				
		ANGULAR: MAX 1/4	MFG APPR				
		TWO PLACE DECIMAL: 1/32	D.A.				
		THREE PLACE DECIMAL: 1/64	COMMENTS:		SEE DWG. NO.:	REV	
NEXT ASSY	USED ON	FINISH				A	
APPLICATION		DO NOT SCALE DRAWING				SCALE: 1/20 WEIGHT:	SHEET 1 OF 1

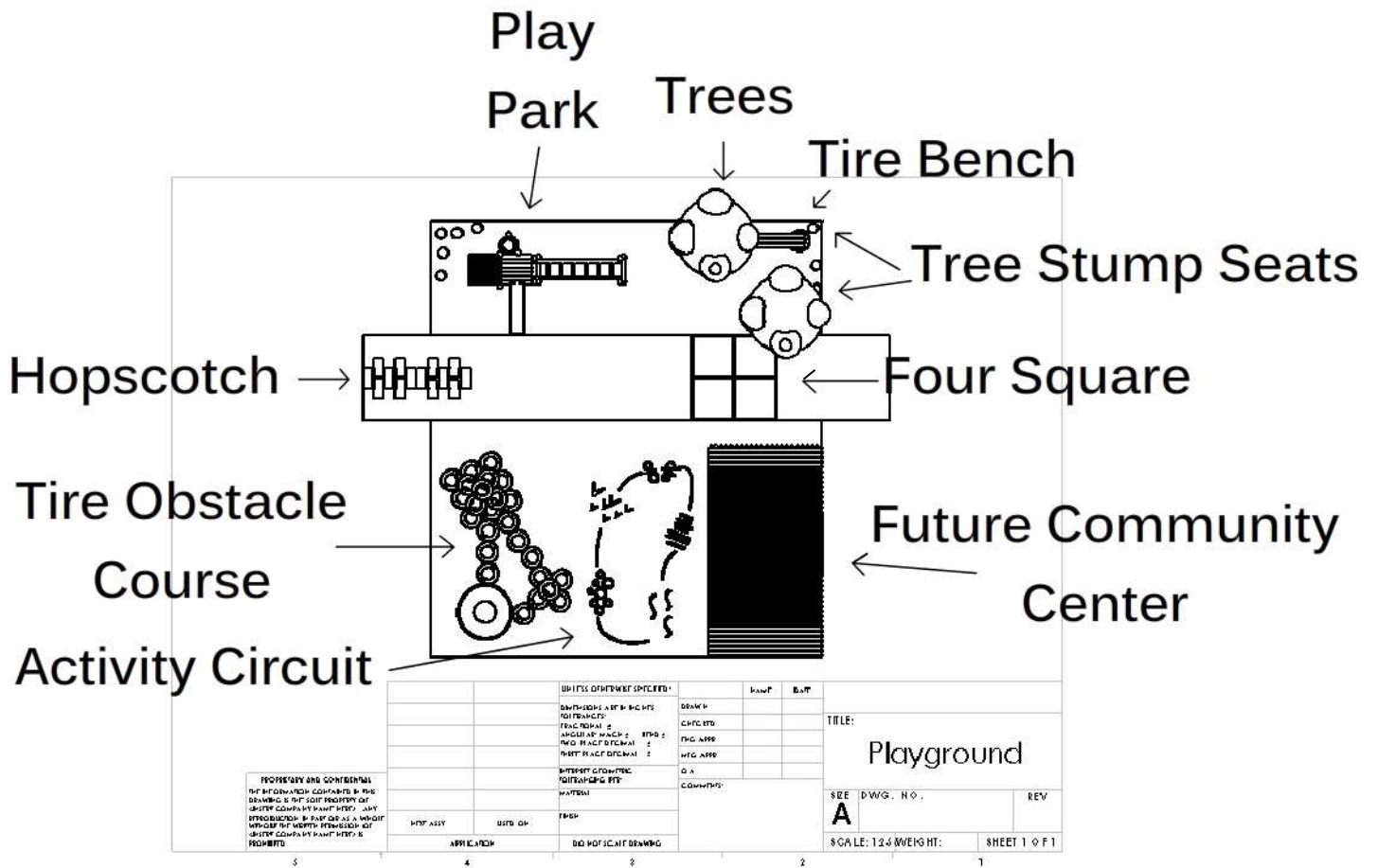
5

4

3

2

1



PROPERTY AND CONFIDENTIALITY RIGHTS RESERVED. THIS DRAWING IS THE SOLE PROPERTY OF QUINCY COMPANY. ANY REPRODUCTION OR USE WITHOUT WRITTEN PERMISSION OF QUINCY COMPANY IS STRICTLY PROHIBITED.

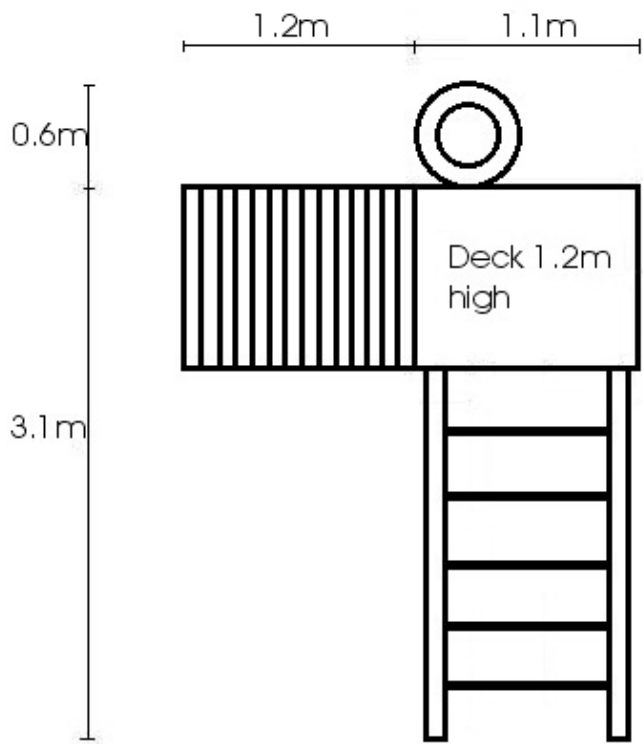
REV	DATE	DESCRIPTION
1		ISSUES IDENTIFIED SPECIFIED
2		DRAWING A AND B ARE NOT TO BE USED
3		FUNCTIONAL
4		ANGULAR MATCH 2
5		TWO FACT DETAIL 2
6		POST FAC DETAIL 2
7		INTERIOR CONNECTION DETAIL 2
8		WATER
9		FINISH
10		APPLICABLE
11		DISCREPANT DRAWING

REV	DATE	DESCRIPTION
1		DRAWING
2		CHANGED
3		NEW AREA
4		NEW AREA
5		O.A.
6		COMMENTS

TITLE:
Playground
 SHEET NO. **A**
 SCALE: 1/2" = 1'-0" WEIGHT: SHEET 1 OF 1

Flamingo Crescent Playground BOQ					
Section	Material	Quantity	Cost/Unit	Actual Cost (Rand)	Notes
Paint	Mastercoat - White 5L	3	250	750	Optimum Hardware
	Tint, Blue 50mL	1	16.5	17	Optimum Hardware
	Tint, Green 50mL	1	16.5	17	Optimum Hardware
	Tint, Red 50mL	1	16.5	17	Optimum Hardware
	Tint, Yellow 50mL	1	16.5	17	Optimum Hardware
	Tint, Orange 50mL	2	11	22	BuildIt
	Tint, Green 50mL	1	11	11	BuildIt
	Tint, Red 50mL	2	11	22	BuildIt
	Tint, Yellow 50mL	2	11	22	BuildIt
	Tint, Magenta 50 mL	1	11	11	BuildIt
	Brush, 50mm	1	15	15	Optimum Hardware
	Brush, 100mm	3	24.5	74	Optimum Hardware
<i>(insert new rows above here)</i>					
Paint Subtotal				993	
Tire Structure	Masonry Bit 10mm	1	15	15	BuildIt
	Masonry Bit 12mm	1	32.5	33	Optimum Hardware
	Expansion Bolts 5x55 10pk	1	35	35	BuildIt
	Expansion Bolts 65x2A 2pk	1	27.5	28	Optimum Hardware
	Bolts 8x65mm Cup Square	20	2.95	59	BuildIt
	Bolts M8x65	50	2.5	125	Optimum Hardware
	Nuts 8M-10B 10pk	2	8.5	17	Optimum Hardware
	Nuts 8M-50B 50pk	1	27.5	28	Optimum Hardware
	Nuts 20pk	1	0.5	1	Optimum Hardware
	Gloss White 1L (Oil Paint)	1	50	50	BuildIt, discounted
	Tires	39	0	0	Arrow Tyres
<i>(insert new rows above here)</i>					
Tire Structure Subtotal				389	
Playstructure	Special 9	1	4800.00	4800	Playventures
	Slide	1	1350.00	1350	Playventures
<i>(insert new rows above here)</i>					
Play Structure Subtotal				6150	
Scenery	Trees	2	0	0	City Donation
	Stumps	8	0	0	City Donation
	Tires	8	0	0	Arrow Tyres, for seating
	Wood 38x114mm	1	0	0	Creche Extra
	<i>(insert new rows above here)</i>				
Scenery Subtotal				0	
GRAND TOTAL				7532	

Special 9



Drawing Not To Scale

