



Flamingo Crescent Crèche Construction Drawings



Justin Brousseau, Jacquelyne DiTroia, Malina
Ibelle, Andres Monterroso, and Kristin Olson

December 17th, 2014

Abstract: This brief document compiles all of the Solidworks Drawings that were put in place to construct the crèche in Flamingo Crescent. On the job, changes were made but the overall structural integrity of the design did not change. The following compilations of drawings were given to the community construction workers to complete the frame and interior of the building.

Authors: Justin Brousseau, Jacquelyne DiTroia, Malina Ibelle, Andres Monterroso, and Kristin Olson

WPI Project Advisors: Scott Jiusto and Steve McCauley

Series Editor: Scott Jiusto

Project Partners: Flamingo Crescent Community, Center of Early Childhood Development (CECD), City of Cape Town, Community Organization Resource Center (CORC), and Informal Settlement Network (ISN)

Project Website: For much more on the project from which this report derives, please see <http://wp.wpi.edu/capetown/projects/p2014/flamingo/>

CTPC Publication Date: December 2014

About the WPI CTPC Community Resources Series

Community Resources publications are designed to assist residents, community-based and non-profit organizations, local government, students, educators and others working toward sustainable community development in disadvantaged communities in South Africa and elsewhere.

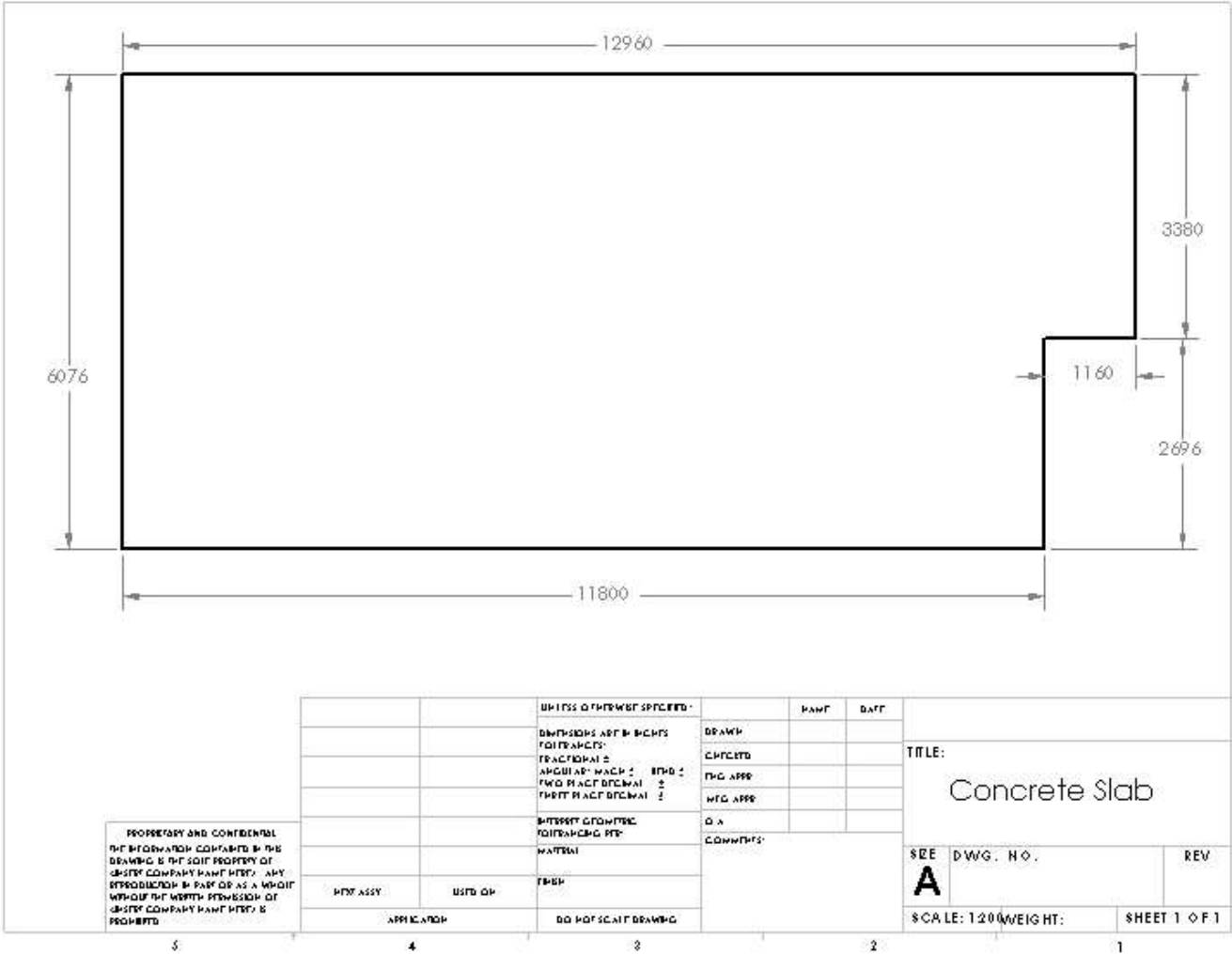
Documents may be downloaded at <http://wp.wpi.edu/capetown/resource-library/>. If you have inquiries or would like permission to reproduce, republish, or substantially adapt the content of this document for other non-profit purposes, please contact us at ctpc@wpi.edu.

The Cape Town Project Centre (CPTC) is part of the Worcester Polytechnic Institute (WPI) Global Projects Program offering WPI students project opportunities in two dozen centers around the world. Each year, about 26 CTPC third-year undergraduate students from our US university work closely in small groups with local Cape Town organizations and communities on issues posed by our local partners. This report is one of a number of project outcomes produced during two months of fieldwork in Cape Town. See the CTPC website for more information: <http://wp.wpi.edu/capetown>.

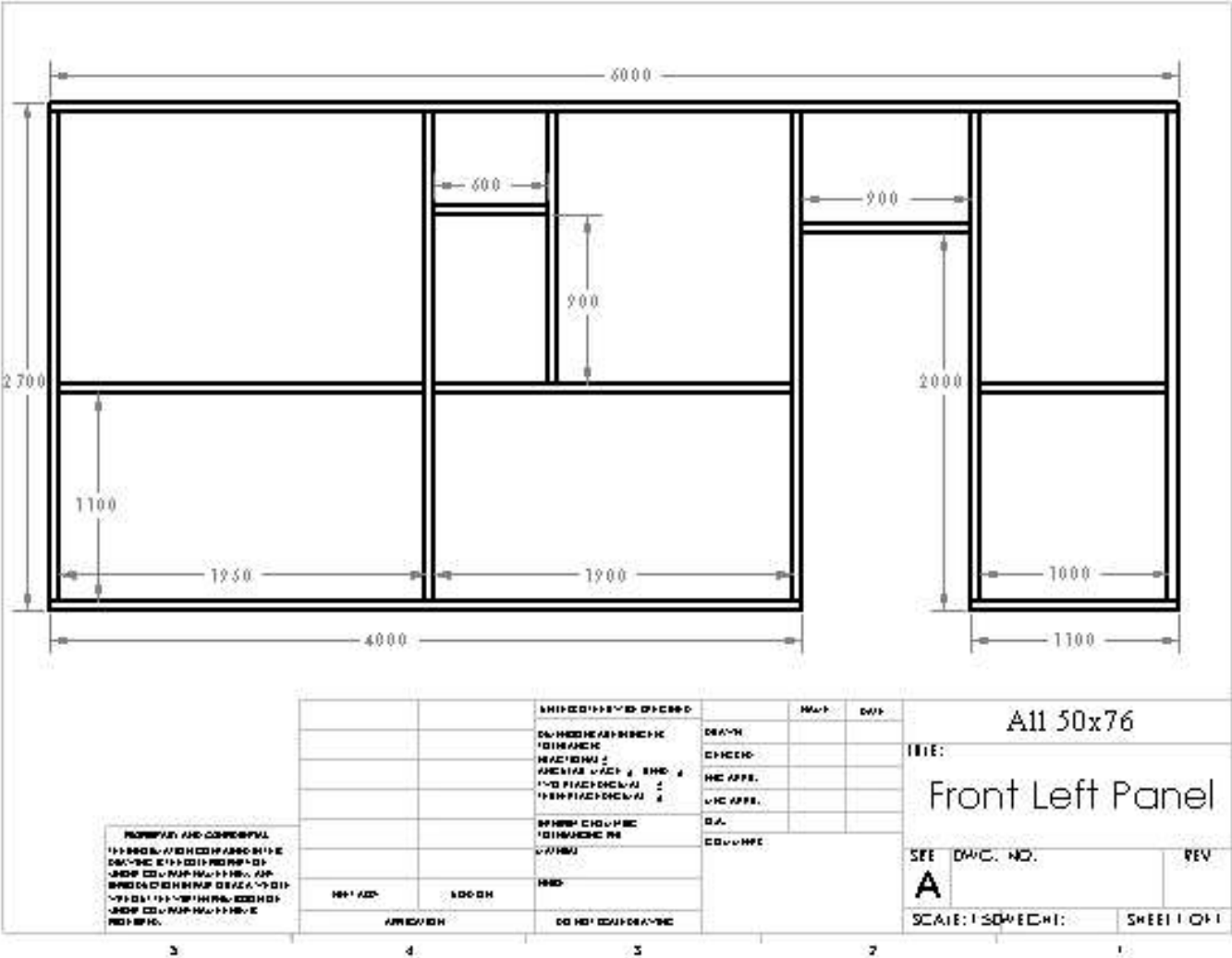
Copyright © WPI 2014

Flamingo Crescent Crèche Construction Drawings

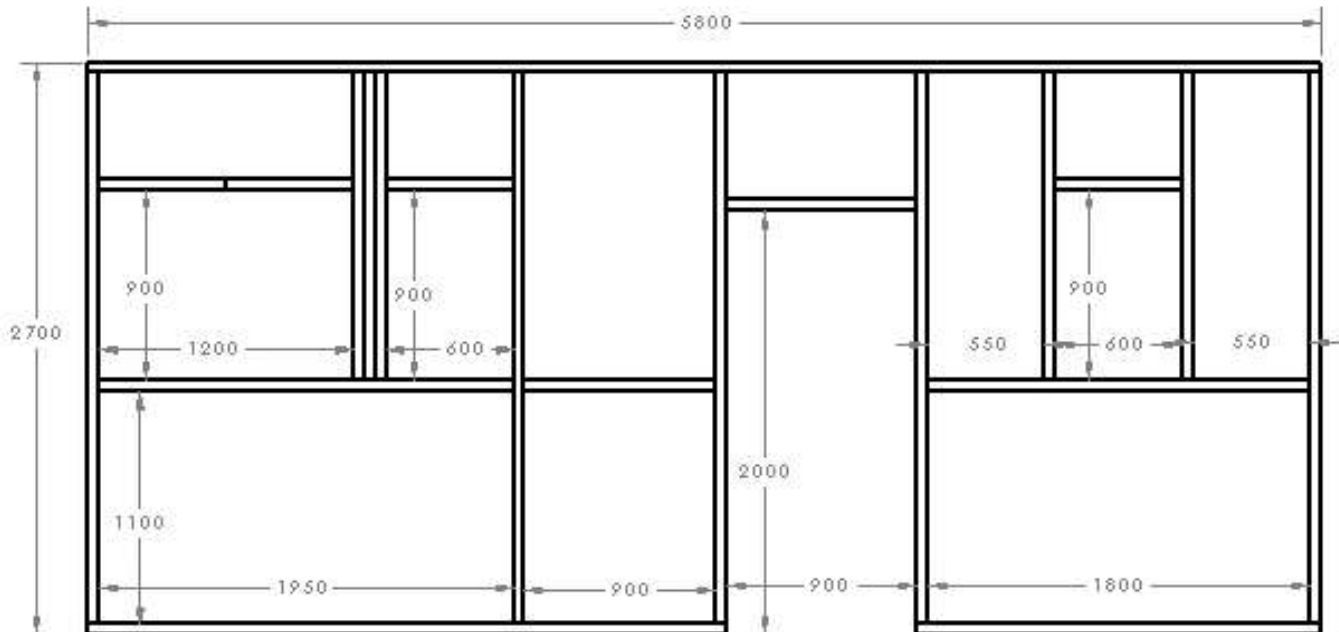
Size of the Concrete Slab



Front Left Panel



Front Right Panel

[illegible][illegible]

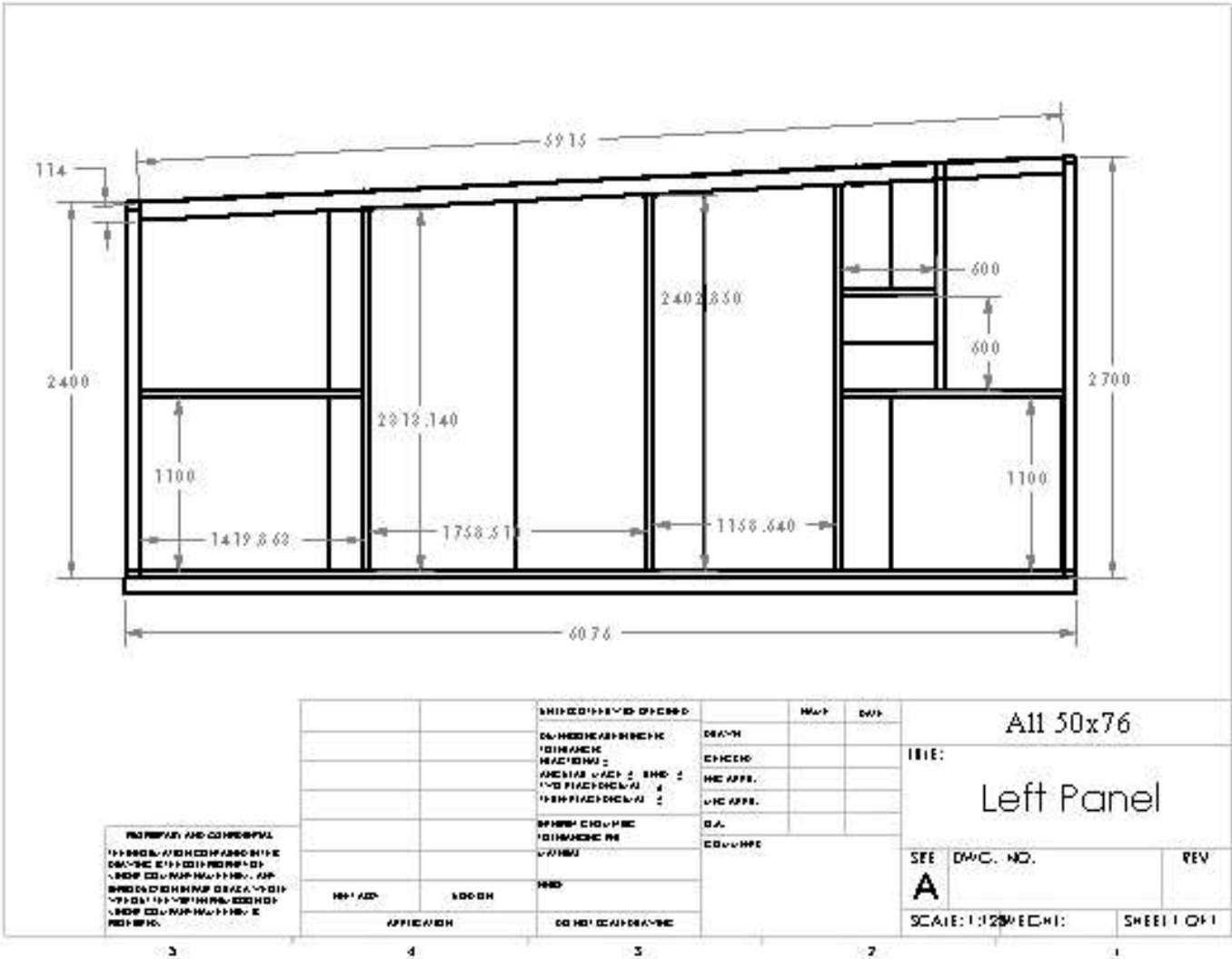
5

ב

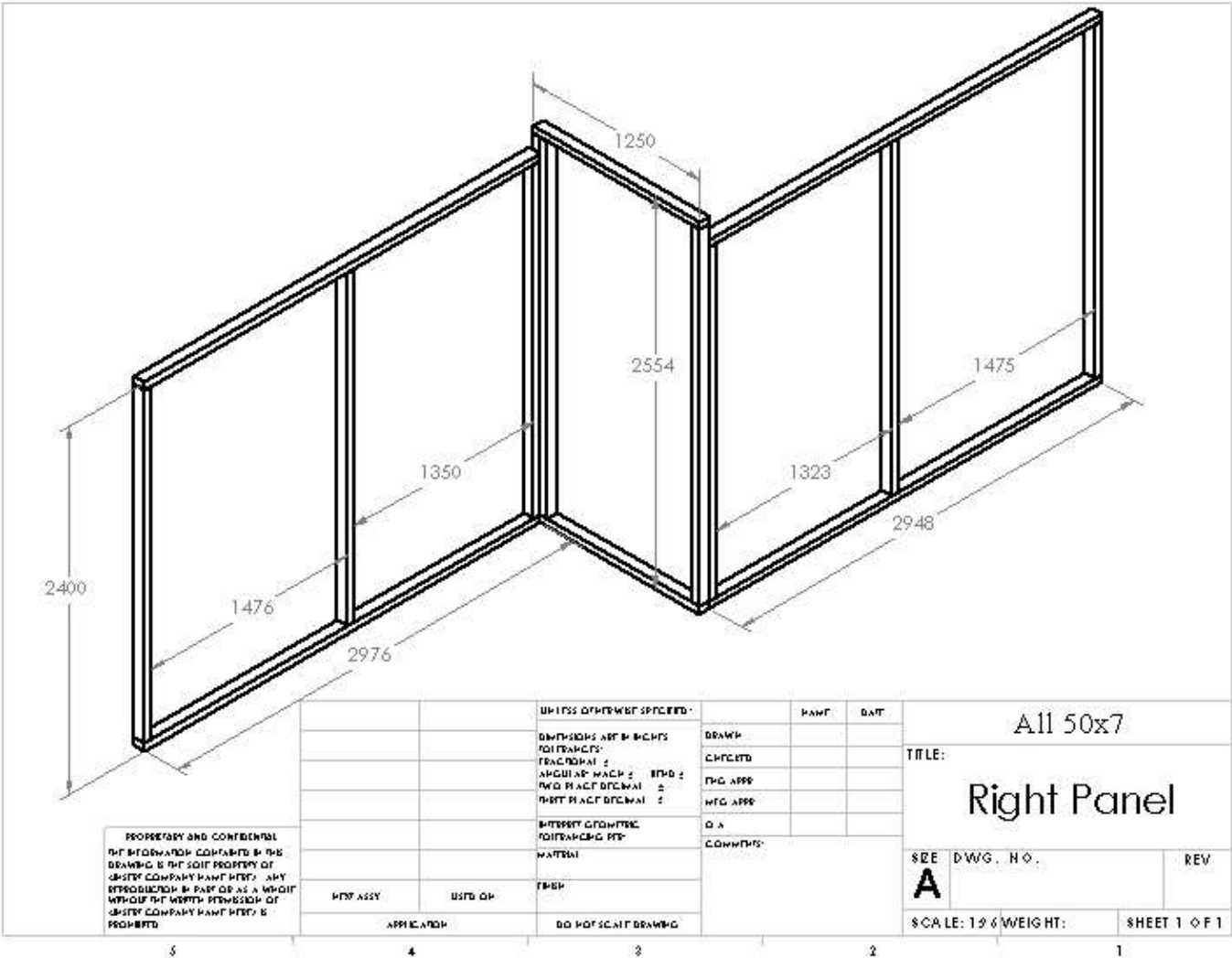
3

i

Left Panel



Right Panel

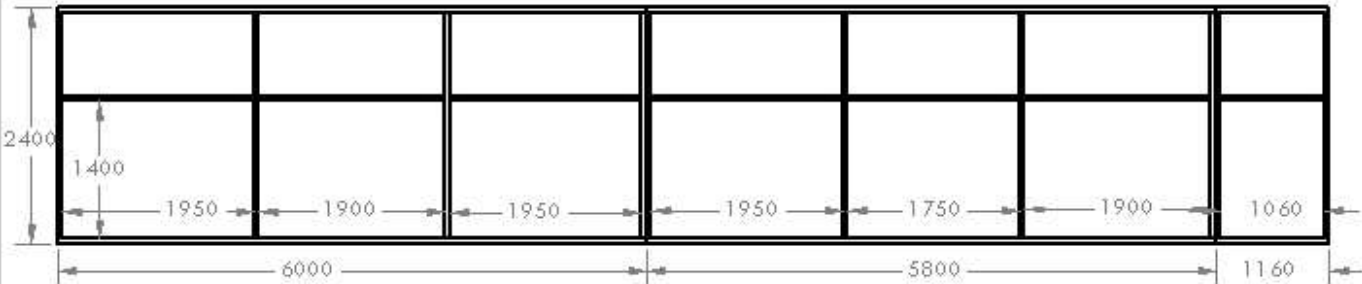


PROPRIETARY AND CONFIDENTIAL
THE INFORMATION CONTAINED IN THIS
DRAWING IS THE SOLE PROPERTY OF
JOSTY COMPANY. ANY REPRODUCTION OR
TRANSMISSION IN ANY FORM OR BY ANY
MEANS, WITHOUT THE WRITTEN PERMISSION OF
JOSTY COMPANY, IS PROHIBITED.

UNLESS OTHERWISE SPECIFIED:		PAGE	DATE
DIMENSIONS ARE IN INCHES		DRAWN	
TOLERANCES:		CHECKED	
FRACTIONAL ±		ENG APPR	
DECIMAL ±		MFG APPR	
HOLE POSITION ±		D.A.	
HOLE SIZE ±		COMMENTS	
MATERIAL			
WELD ASSY	WELD OR		
APPLICATION		DO NOT SCALE DRAWING	

All 50x7		
TITLE:		
Right Panel		
SIZE	DWG. NO.	REV
A		
SCALE: 1/2" = 1'-0"		SHEET 1 OF 1

Back Panel



PROPRIETARY AND CONFIDENTIAL
THE INFORMATION CONTAINED IN THIS
DRAWING IS THE SOLE PROPERTY OF
JENSEN COMPANY NAME HERE. ANY
REPRODUCTION IN PART OR AS A WHOLE
WITHOUT THE WRITTEN PERMISSION OF
JENSEN COMPANY NAME HERE IS
PROHIBITED.

		UNLESS OTHERWISE SPECIFIED:	NAME	DATE	All 50x76		
		DIMENSIONS ARE IN INCHES TOLERANCES: FRACTIONAL 1/8 ANGULAR MAX 1/8 1/8 1/8 TWO PLACE DECIMAL 1/32 THREE PLACE DECIMAL 1/64	DRAWN		TITLE: Back Update Panel		
			CHECKED				
			PKG APPR				
			WTC APPR				
		INTEREST GEOMETRIC TOLERANCING PER MATERIAL	D.A.		SIZE DWG. NO. REV A		
			COMMENTS:				
NEXT ASSY	USED ON	TEMP					
APPLICATION		DO NOT SCALE DRAWING					
			SCALE: 1:100		WEIGHT:	SHEET 1 OF 1	

5

4

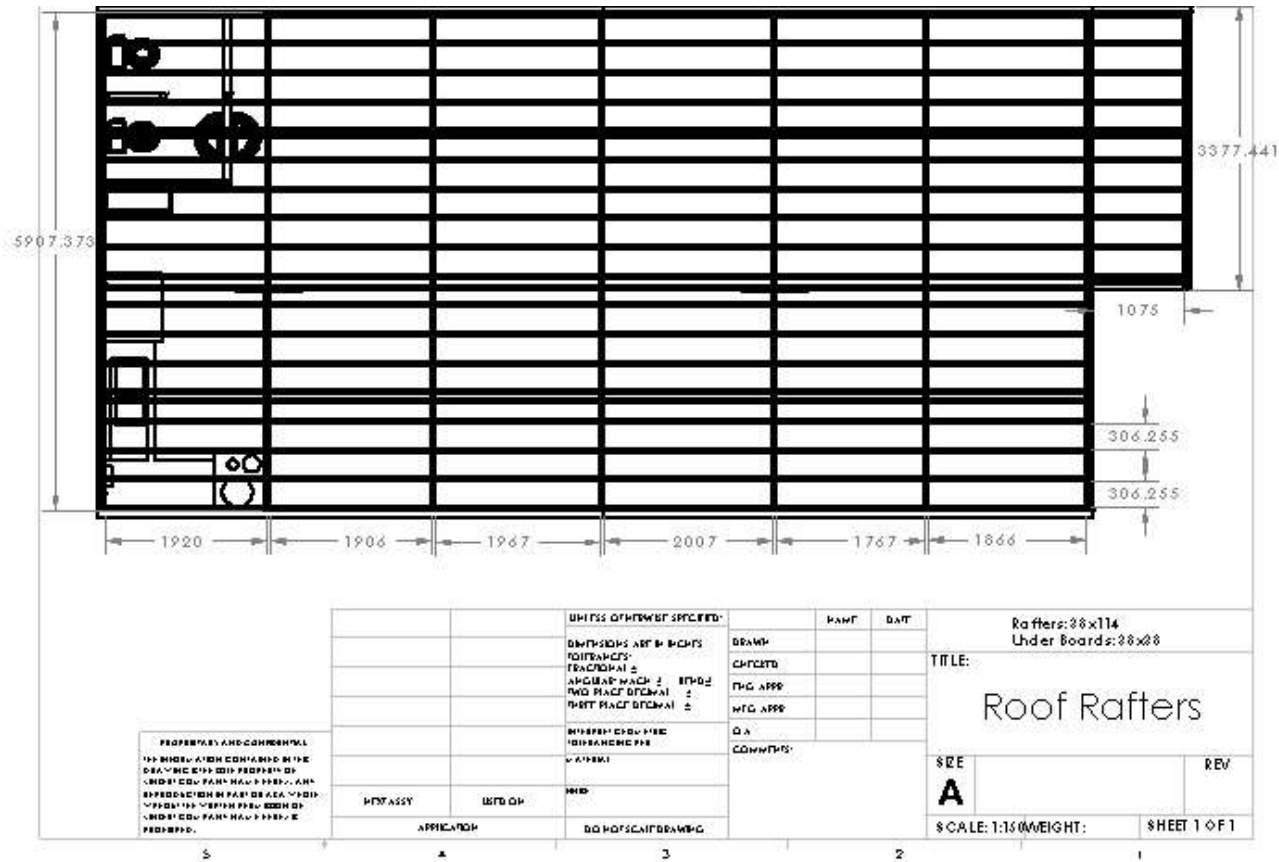
3

2

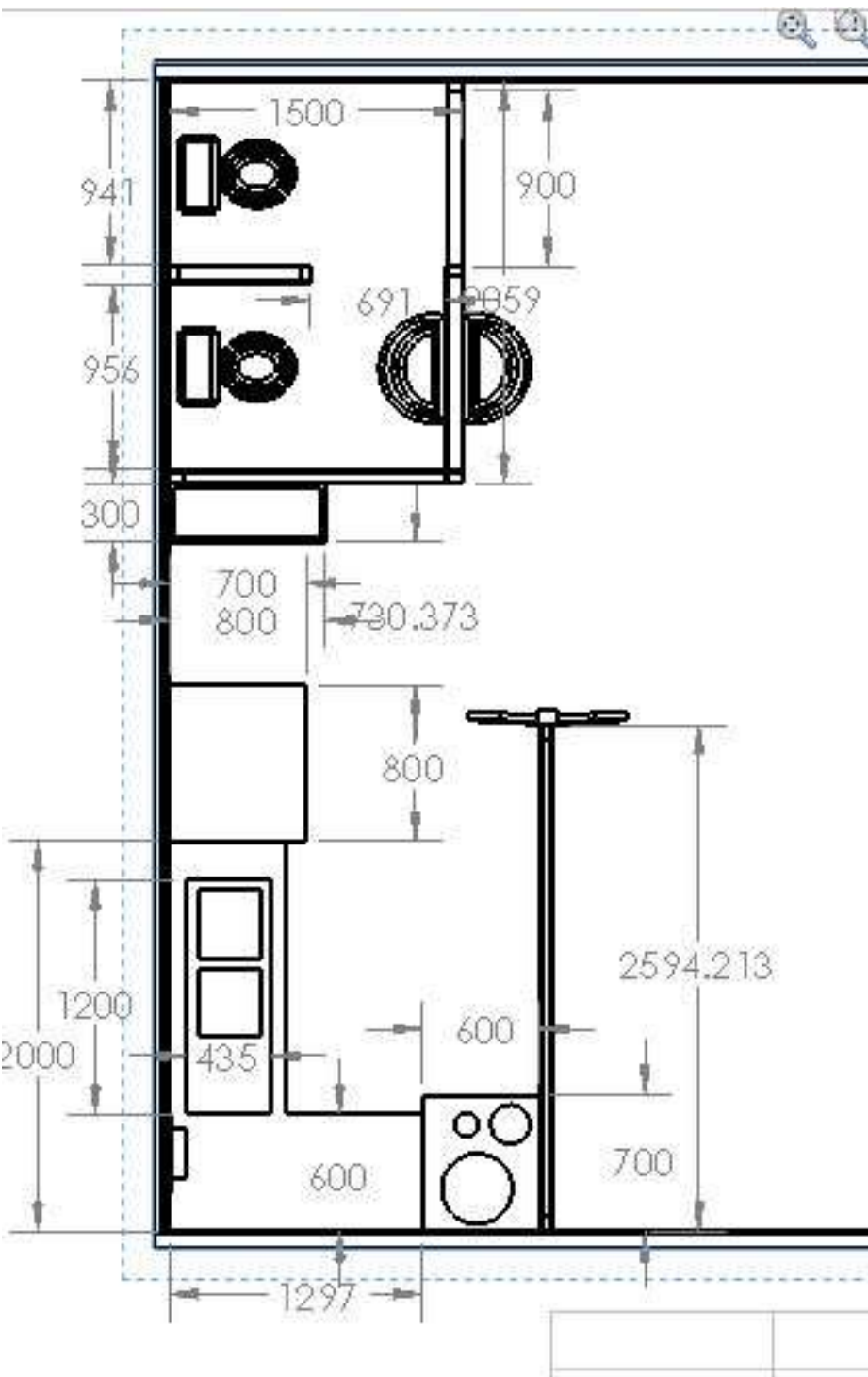
1

Crèche Space Dimensions				
Space	Section	Dimensions (m)		Area (m ²)
Floor Area	Large Box	11.8	6.076	71.6968
	Small Nook	1.16	3.38	3.9208
TOTAL:				75.6176
Wall Area	Front	2.7	11.8	31.86
	Left Side	2.4	6.076	14.5824
	Right Side	2.4	2.696	6.4704
		2.4	1.16	2.784
		2.4	3.38	8.112
	Back	2.4	12.96	31.104
TOTAL:				94.9128

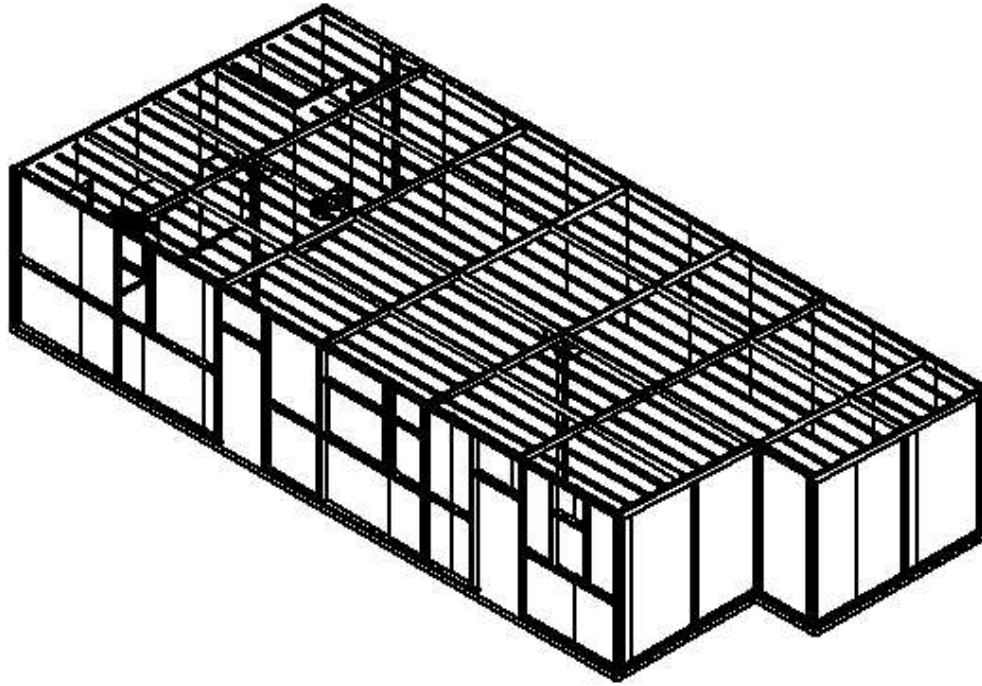
Roof Rafters



Kitchen & Bathroom



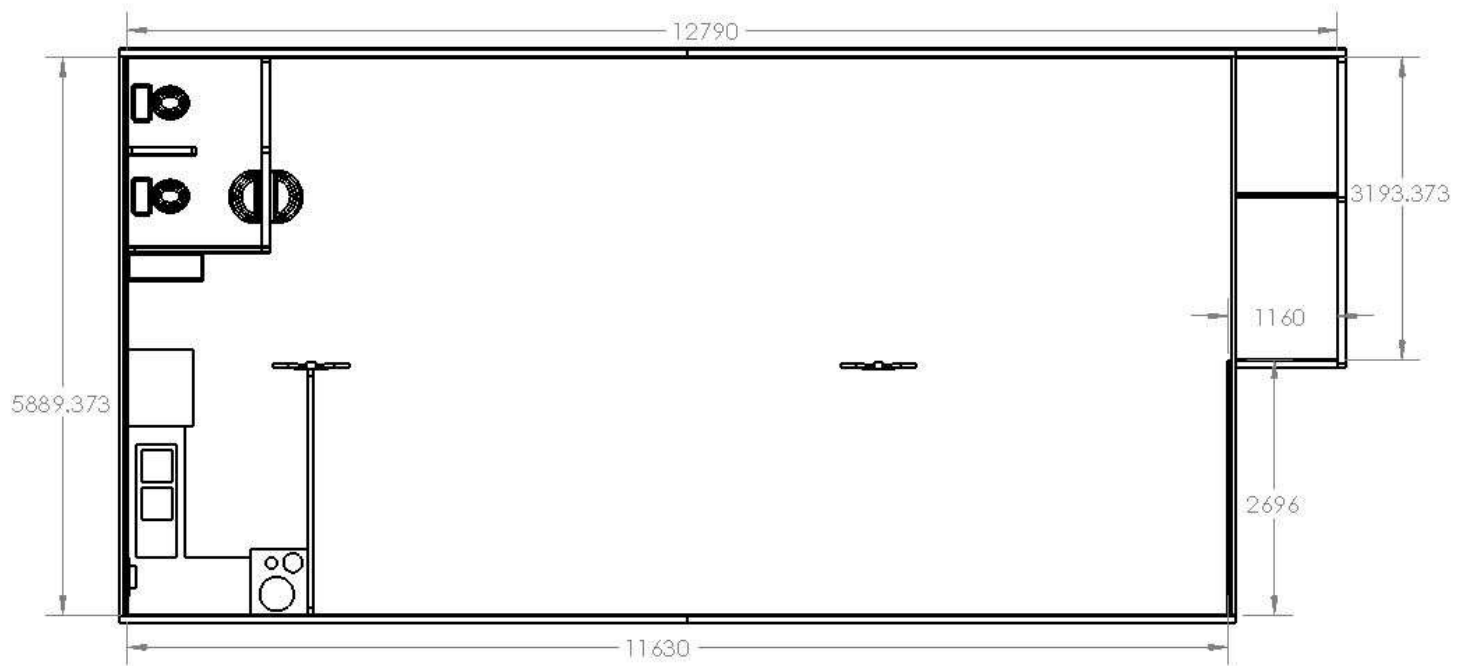
Full Frame



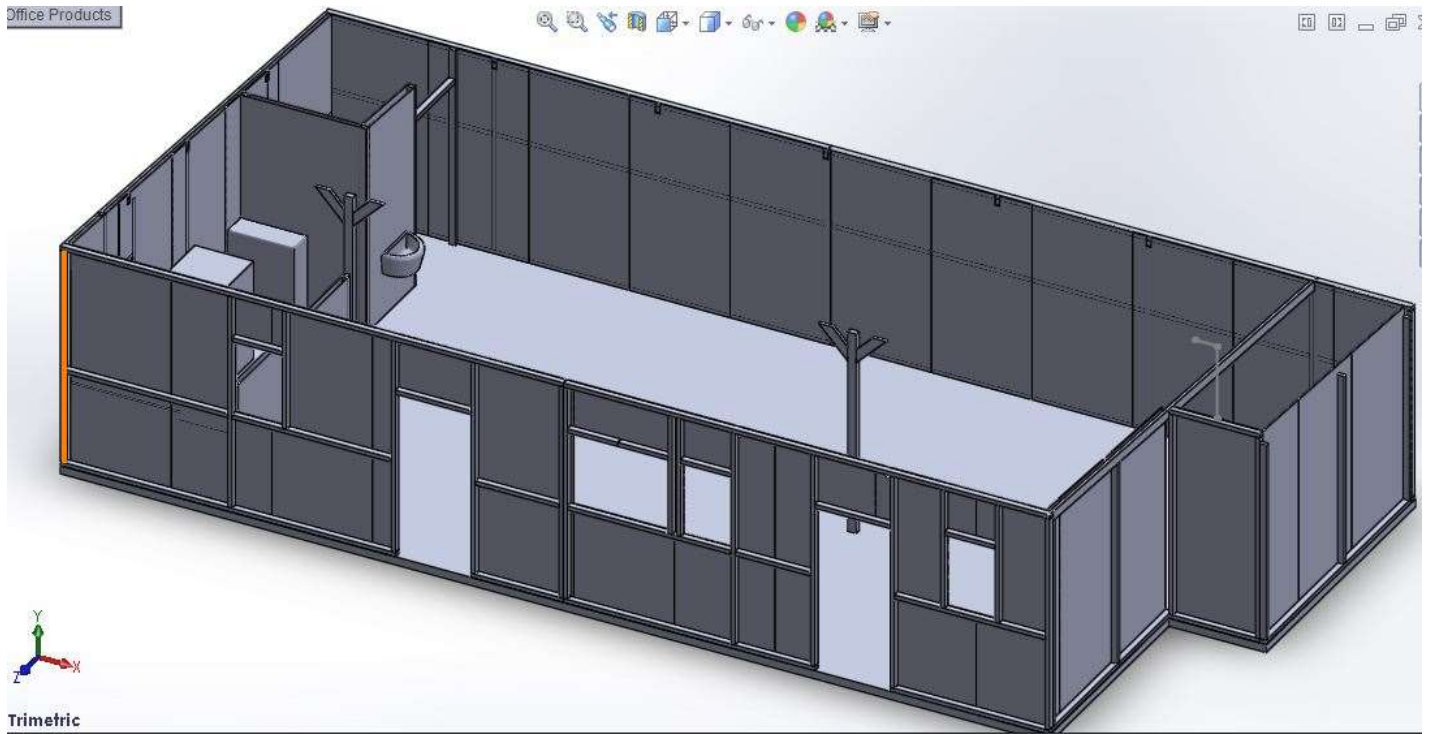
PROPRIETARY AND CONFIDENTIAL
THE INFORMATION CONTAINED IN THE
DRAWING IS THE SOLE PROPERTY OF
CHARTER COMPANY NAME HERE. ANY
REPRODUCTION IN PART OR AS A WHOLE
WITHOUT THE WRITTEN PERMISSION OF
CHARTER COMPANY NAME HERE IS
PROHIBITED.

		QUANTITY OF ITEM(S) SPECIFIED	DRAWN	NAME	DATE	TITLE: Outer Frame
		DIMENSIONS ARE IN INCHES FOLIO FRAMES: FRAC NOMINAL ± ANGULAR MATCH ± BPD ± RWD MATCH NOMINAL ± BFTT MATCH NOMINAL ±	CHECKED			
		INTEREST GEOMETRIC FOLLOWING FOR:	PIC APP			
		MATERIAL	WEG APP			
		FISH	O A			
			COMMENTS			
REF	ITEM ASSY	USED ON				\$REV DWG. NO.
						A
	APPLICATION	DO NOT SCALE DRAWING				\$SCALE: 1:1\$WEIGHT:
						SHEET 1 OF 1

A Look Inside



Office Products



Trimetric

Final Rendering

